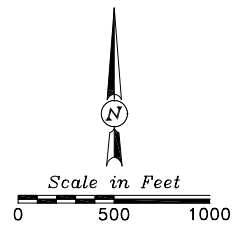
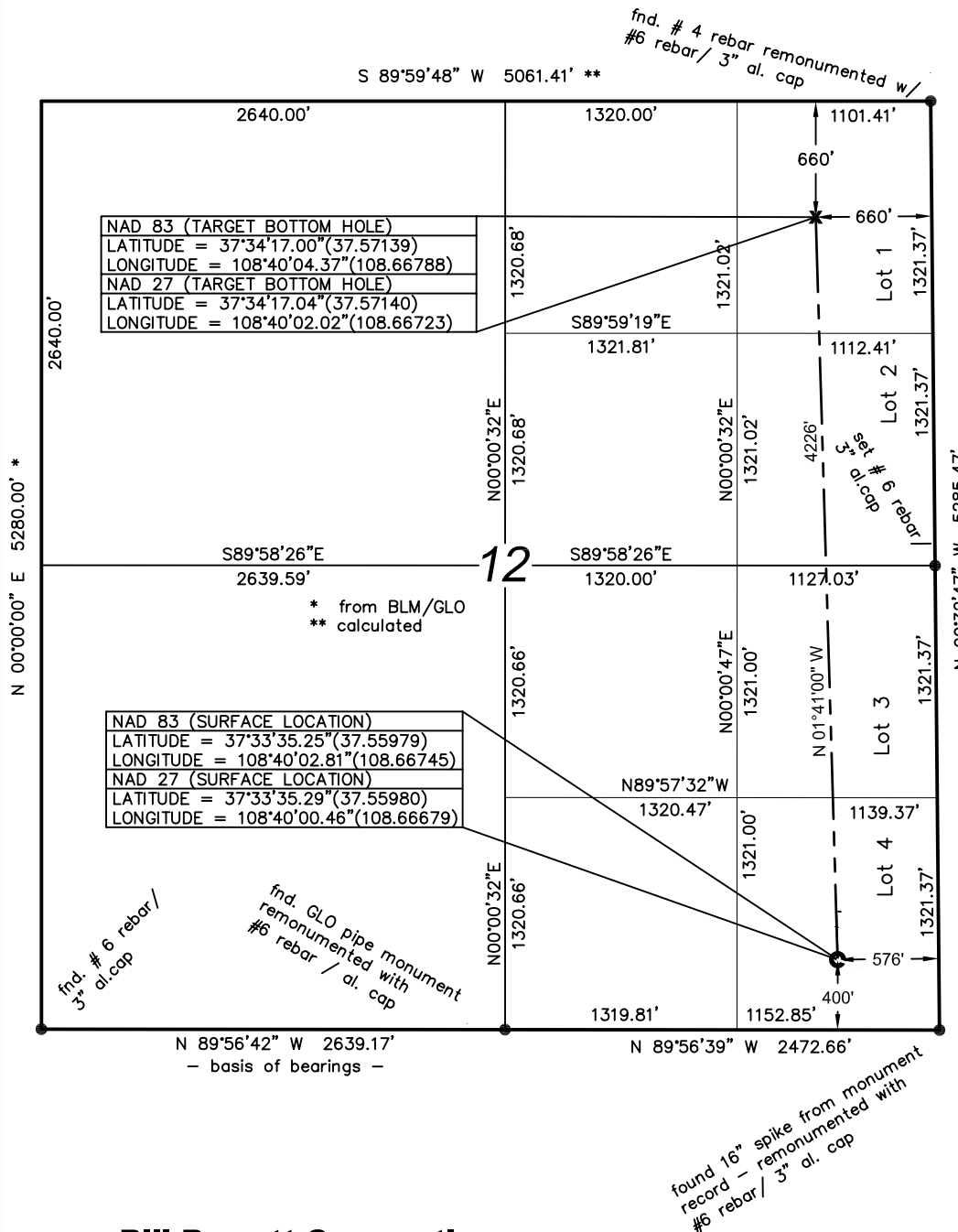


Well Location Plat



- Standard monument

Bearings from GPS
true north

Lat/Lon from GPS observations
PDOP: 3.8

No improvements within 200'
overhead powerline: 370'
nearest public road: 385'

Land use: dry land farming

Distances/dimensions are perpendicular to section lines

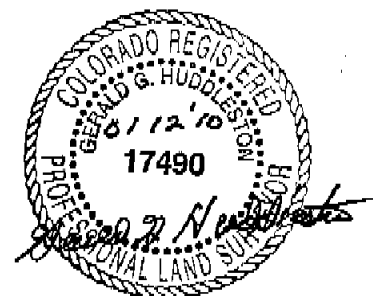
Instrument operator: R. Caffey

Bill Barrett Corporation
McAfee #16H-12-38-17

400' FSL & 576' FEL (surface location)
Lot 4, Section 12, T38N, R17W, NMPM
Montezuma County, Colorado
7120.6' grd. el. (NAVD88)
660' FNL & 660' FEL (bottom hole)
Lot 1, Section 12, T38N, R17W, NMPM
Montezuma County, Colorado

Date of Survey: 11/04/08
Date of Plat: 11/11/08

Revised: 5-28-09
Revised: 1-12-10



KNOW ALL MEN BY THESE PRESENTS that I, GERALD G. HUDDLESTON, do hereby certify that this plat was prepared from field notes of an actual survey made by me or under my supervision and that the same is true and accurate to the best of my knowledge and belief.

