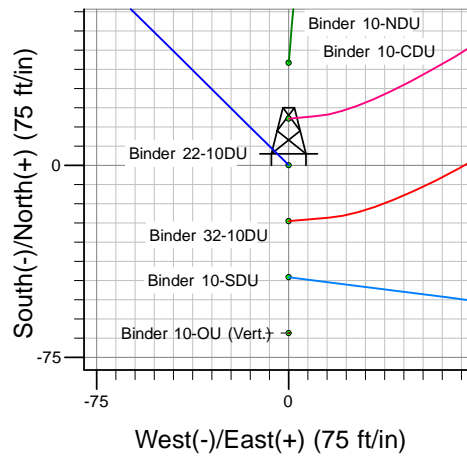
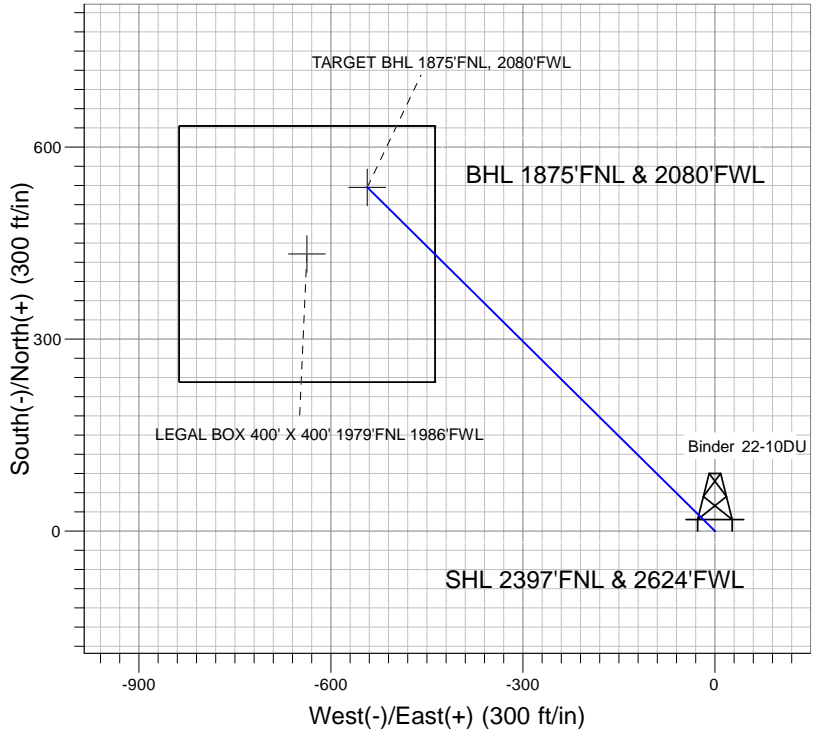
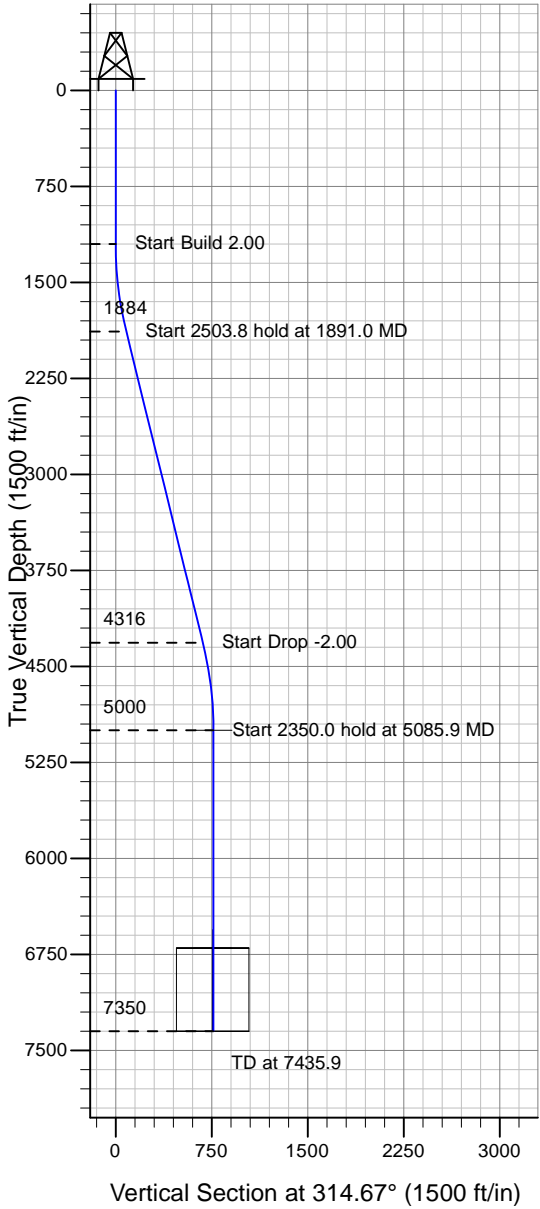


Well Name: Binder 22-10DU

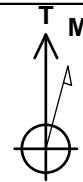
Surface Location: Binder 10-NDU Pad Sec.10-T4N-R67W
 North American Datum 1983 , US State Plane 1983 , Colorado Northern Zone
 Ground Elevation: 4780.0

+N/-S+E/-W Northing Easting Longitude Slot
 0.0 0.0 1362773.43 3173643.01 40° 19' 39.144 N 104° 52' 37.884 W
 Original Well Elev WELL @ 4793.0ft (Original Well Elev)

PETROLEUM DEVELOPMENT CORP Weld County CO



Binder 10-NDU Pad Sec.10-T4N-R67W
 Binder 22-10DU
 Plan #1 (10-21-09)
 13:45, October 22 2009



Azimuths to True North
 Magnetic North: 9.10°

Magnetic Field
 Strength: 53274.4snT
 Dip Angle: 67.04°
 Date: 10/21/2009
 Model: IGRF200510

WELLBORE TARGET DETAILS (LAT/LONG)

Name	TVD	+N/-S	+E/-W	Latitude	Longitude	Shape
TARGET BHL 1875'FNL, 2080'FWL	5000.0	537.1	-543.3	40° 19' 44.451 N	104° 52' 44.899 W	Point
LEGAL BOX 400' X 400' 1979'FNL 1986'FWL	6700.0	433.1	-637.3	40° 19' 43.424 N	104° 52' 46.113 W	Rectangle (Sides: L400.0 W400.0)

SECTION DETAILS

Sec	MD	Inc	Azi	TVD	+N/-S	+E/-W	DLeg	TFace	VSec	Target
1	0.0	0.00	0.00	0.0	0.0	0.0	0.00	0.00	0.0	
2	1200.0	0.00	0.00	1200.0	0.0	0.0	0.00	0.00	0.0	
3	1891.0	13.82	314.67	1884.4	58.3	-59.0	2.00	314.67	82.9	
4	4394.8	13.82	314.67	4315.6	478.8	-484.3	0.00	0.00	681.1	
5	5085.9	0.00	0.00	5000.0	537.1	-543.3	2.00	180.00	764.0	TARGET BHL 1875'FNL, 2080'FWL
6	7435.9	0.00	0.00	7350.0	537.1	-543.3	0.00	0.00	764.0	