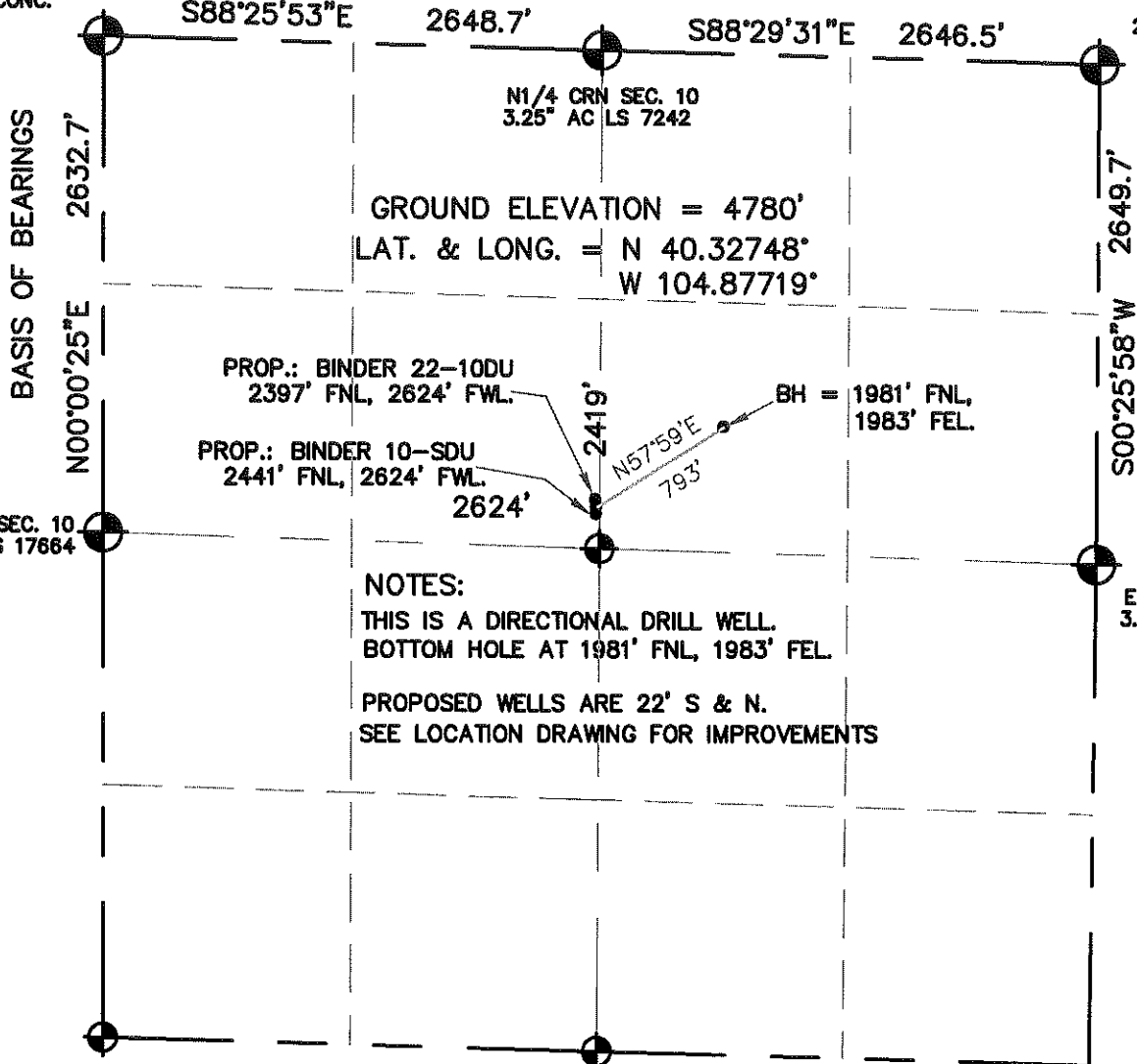


WELL LOCATION CERTIFICATE

NW CRN SEC. 10
2" PIPE IN CONC.

SECTION 10, TOWNSHIP 4 NORTH, RANGE 67 WEST, 6TH P.M.

NE CRN SEC. 10
2.5" AC LS 24305



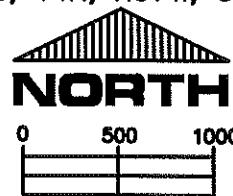
NOTES:
THIS IS A DIRECTIONAL DRILL WELL.
BOTTOM HOLE AT 1981' FNL, 1983' FEL.
PROPOSED WELLS ARE 22' S & N.
SEE LOCATION DRAWING FOR IMPROVEMENTS

I HEREBY STATE TO UNIOIL THAT THIS WELL LOCATION CERTIFICATE
FOR THE WELL BINDER 32-10DU IS LOCATED 2419' FNL & 2624' FWL, SEC. 10, T4N, R67W, 6PM.



LEGEND

- = FOUND MONUMENT
- = PROPOSED WELL
- = IMPROVEMENTS (AS LABELED)



SCALE 1" = 1000'

ELEVATION SOURCE = USGS 7.5' QUAD.MAP CONTOURS
NGVD 1929 DATUM.

LAT. & LONG. ARE DIFFERENTIALLY CORRECTED (NAD'83)
USING (DGPS) WITH (PDOP) VALUES LESS THAN SIX (6).

SHOWN DISTANCES ARE FIELD MEASURED - EXTERIOR SECTION LINES
ARE DRAWN TO SCALE (BEST APPROX. OR FOUND MONUMENT).

THOMAS G. CARLSON, PLS 24657
HORSESHOE SURVEYING, LLC

THIS IS NOT A MONUMENTED BOUNDARY SURVEY, IT IS ONLY A
DRAWING INTENDED TO DEPICT THE WELL LOCATION TO SECTION LINES.

DISTANCES TO WELL SHOWN PERPENDICULAR
TO SECTION LINES.

PREPARED BY: HORSESHOE SURVEYING, LLC PO BOX 150458 LAKEWOOD, CO 80215 (720)872-0196		WELL NAME: BINDER 32-10DU	
DRAWING DATE: 9-17-09		LOCATION: WELD COUNTY, CO N1/2, SEC. 10, T4N, R67W, 6TH P.M.	
FIELD DATE: 10-7-08	BY: TGC	CHKD:	JOB NO. SHEET NO. 1 OF 1