

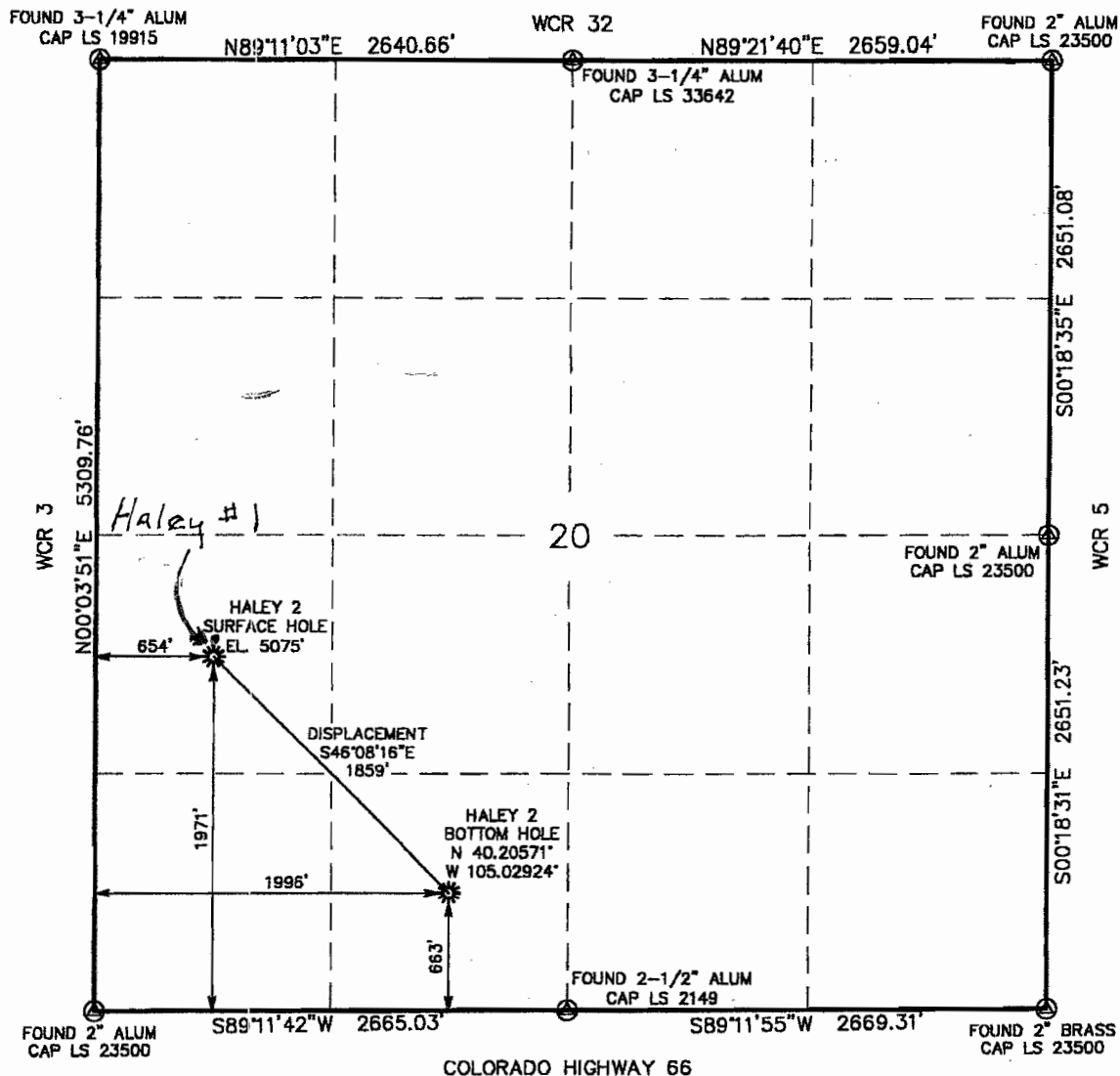
Atlas Surveying Company 5082 East Hampden Avenue #325 Denver, Colorado 80222

# WELL LOCATION CERTIFICATE

THIS MAP DOES NOT REPRESENT A BOUNDARY SURVEY

## HALEY 2

SECTION 20  
TOWNSHIP 3 NORTH  
RANGE 68 WEST



0 1000  
Scale 1" = 1000 ft

IN ACCORDANCE WITH A REQUEST FROM MURREY HERRING - TOP OPERATING COMPANY, ATLAS SURVEYING COMPANY, INC. HAS DETERMINED THE LOCATION OF THE HALEY 2 SURFACE HOLE TO BE 1971' FSL, 654' FWL, AS MEASURED AT NINETY (90) DEGREES FROM THE SECTION LINES, SECTION 20, TOWNSHIP 3 NORTH, RANGE 68 WEST, 6TH PRINCIPLE MERIDIAN, WELD COUNTY, COLORADO.

I HEREBY CERTIFY THAT THIS WELL LOCATION CERTIFICATE WAS PREPARED BY ME, OR UNDER MY DIRECT SUPERVISION ON 12/14/2009, FOR AND ON BEHALF OF TOP OPERATING COMPANY, THAT IT IS NOT A LAND SURVEY PLAT OR AN IMPROVEMENT SURVEY PLAT, AND THAT IT IS NOT TO BE RELIED UPON FOR ESTABLISHMENT OF FENCE, BUILDING, OR OTHER FUTURE IMPROVEMENT LINES.

### NOTES:

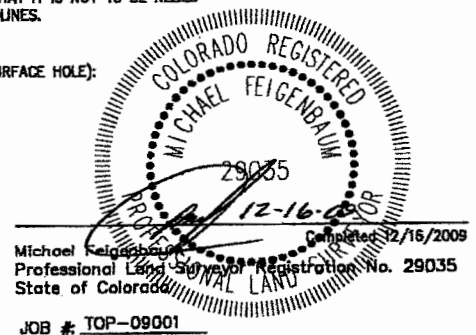
- 1) BASIS OF BEARINGS FOR THIS MAP ARE BASED UPON GPS OBSERVATIONS MADE ON 07/14/2006 BETWEEN MONUMENTS LOCATED AT THE SOUTHEAST SECTION CORNER AND THE EAST QUARTER CORNER OF SAID SECTION AND WITH ALL BEARINGS SHOWN HEREON RELATIVE THERETO.
- 2) ELEVATIONS ARE BASED UPON THE AVERAGE OF SPOT ELEVATIONS DEPICTED ON THE U.S.G.S. 7.5 MINUTE QUADRANGLE MAP OF THE SECTION SHOWN HEREON.
- 3) SEE VISIBLE IMPROVEMENTS PAGE FOR FEATURES WITHIN 400' OF THE LOCATION.
- 4) SEE HYDROLOGY PAGE FOR ALL WATER FEATURES WITHIN 1000' OF THE LOCATION.
- 4) THE LOCATION FALLS ON AN EXISTING DRILL PAD IN AN AGRICULTURAL FIELD.

LATITUDE & LONGITUDE (NAD 83 SURFACE HOLE):  
LATITUDE: N 40.20926°  
LONGITUDE: W 105.03401°  
PDOP: 2.34  
NEAREST PROPERTY LINE: 654'

### LEGEND

- (A) - FOUND SURVEY MONUMENT PER MONUMENT RECORD EXCEPTIONS NOTED.
- (C) - CALCULATED DIMENSION

NOTICE: According to Colorado law you MUST commence any legal action based upon any defect in this W.L.C. within three years after you first discover such defect. In no event may any action based upon any defect in this W.L.C. be commenced more than ten years from this said date of the certification shown hereon.



JOB #: TOP-09001