

EnCana OIL & GAS (USA) INC.

ADDENDUM TO LEGAL PLATS FOR

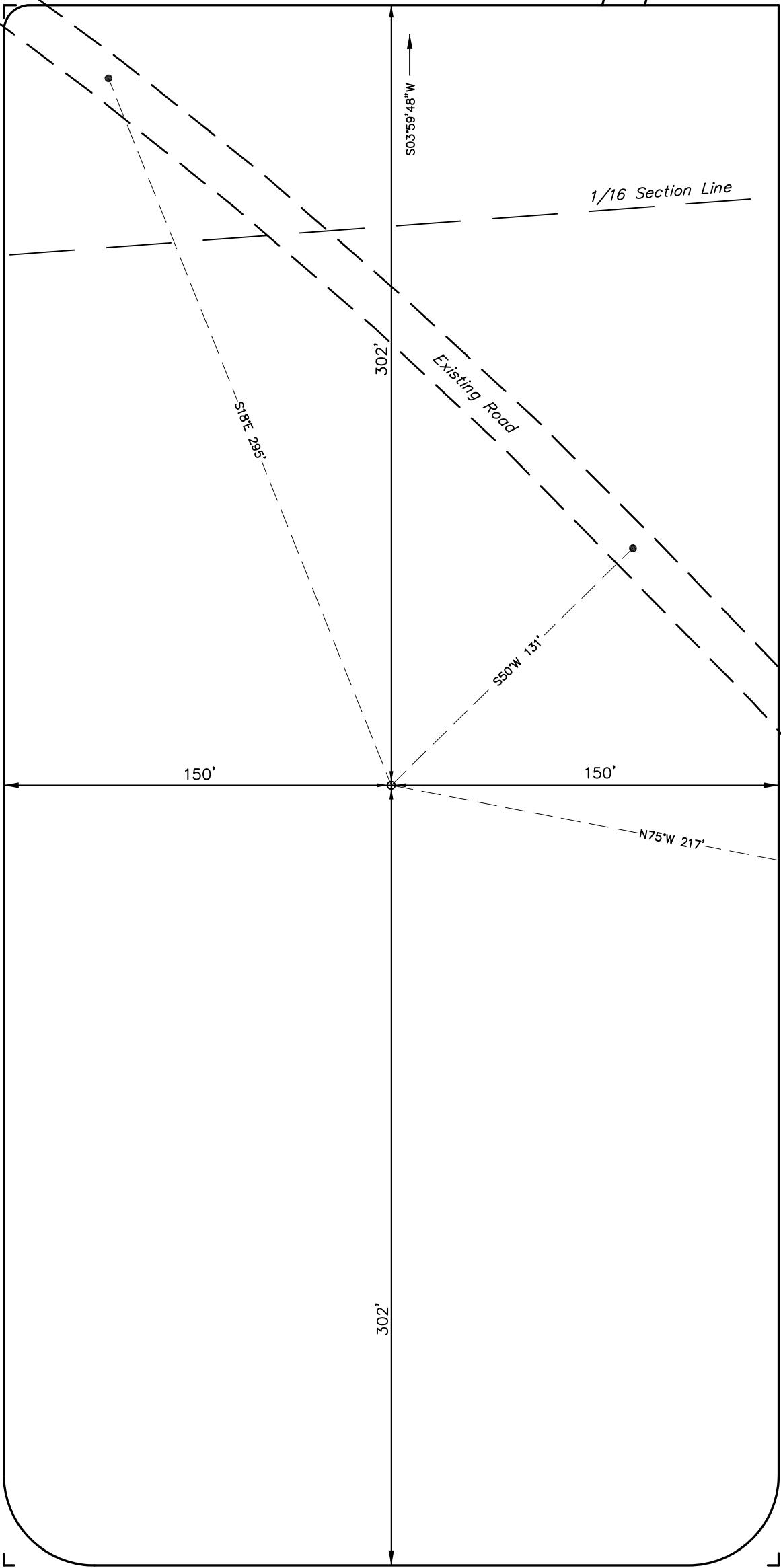
SGU Frac Pad J25 496
SECTION 25, T4S, R96W, 6th P.M.
NW 1/4 SE 1/4

Sheet 1a of 11

Proposed Road to B36

Access Road

SCALE: 1" = 50'
DATE: 11-05-09
Drawn By: D.R.B.
Revised: 11-25-09 D.R.B.



SURFACE USE OF LOCATION IS
GRAZING, VEGETATION CONSISTS
MAINLY OF SAGEBRUSH & NATIVE
GRASSES.

LOCATION LAYOUT FOR

SGU Frac Pad J25 496

SECTION 25, T4S, R96W, 6th P.M.

NW 1/4 SE 1/4

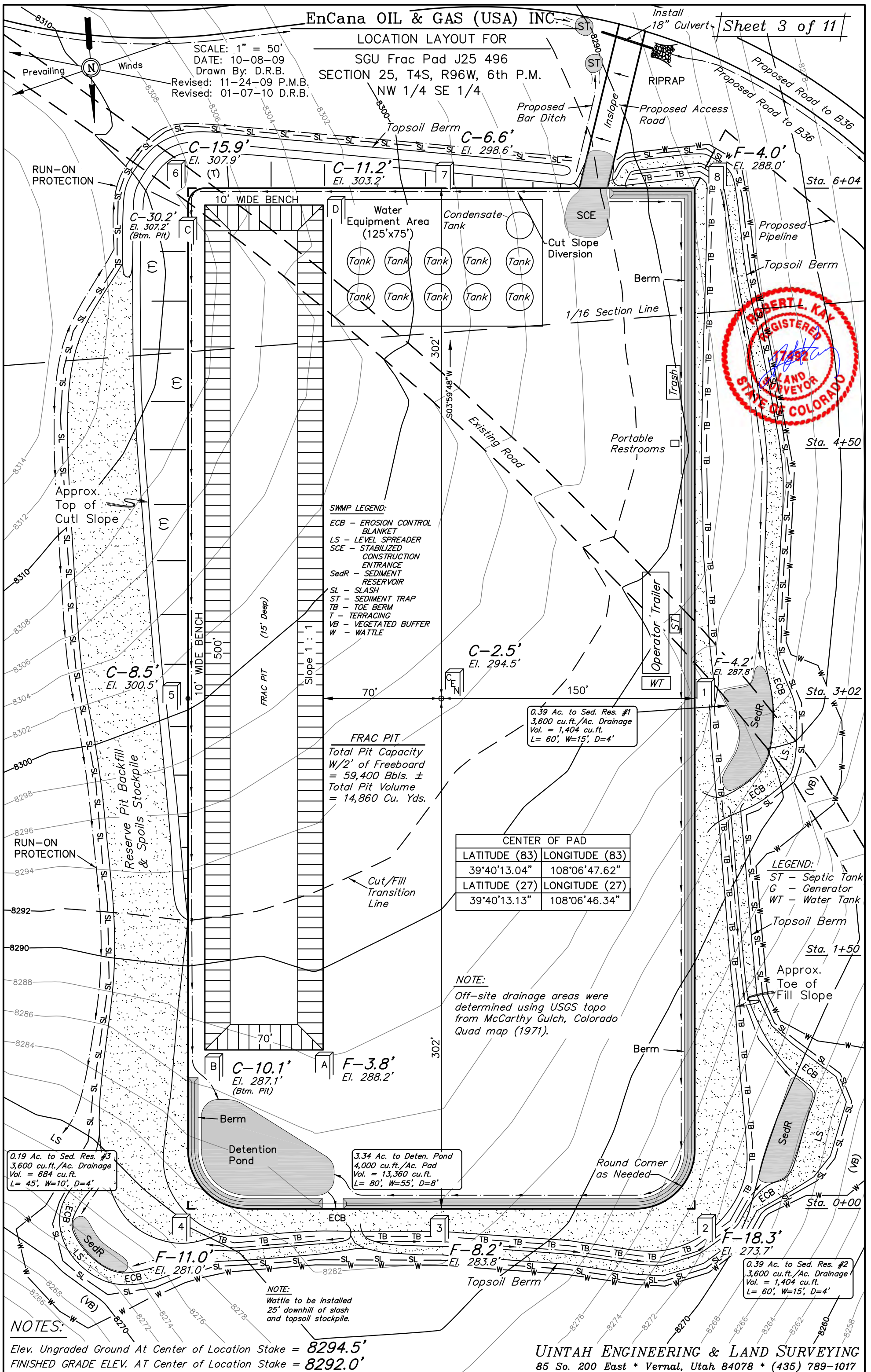
SCALE: 1" = 50'

DATE: 10-08-09

Drawn By: D.R.B.

Revised: 11-24-09 P.M.B.

Revised: 01-07-10 D.R.B.



EnCana OIL & GAS (USA) INC.

PRE-CONSTRUCTION LAYOUT FOR

SGU Frac Pad J25 496
SECTION 25, T4S, R96W, 6th P.M.
NW 1/4 SE 1/4

Sheet 3a of 11

SCALE: 1" = 50'
DATE: 10-08-09
Drawn By: D.R.B.
Revised: 11-25-09 D.R.B.



Install 18" Culvert
RIPRAP
Proposed Access Road
Proposed Road to B36
Proposed Pipeline
Inslope
Proposed Bar Ditch
ST
ST

SCE

1/16 Section Line



S03°59'48"W

302'

70'

150'

CENTER OF PAD	
LATITUDE (83)	LONGITUDE (83)
39°40'13.04"	108°06'47.62"
LATITUDE (27)	LONGITUDE (27)
39°40'13.13"	108°06'46.34"

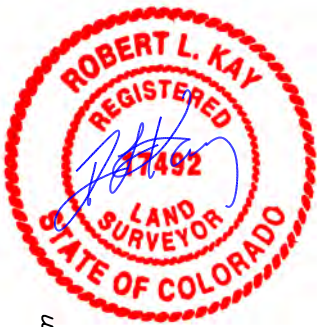
NOTE:

Wattle to be installed
25' downhill of slash
and topsoil stockpile.

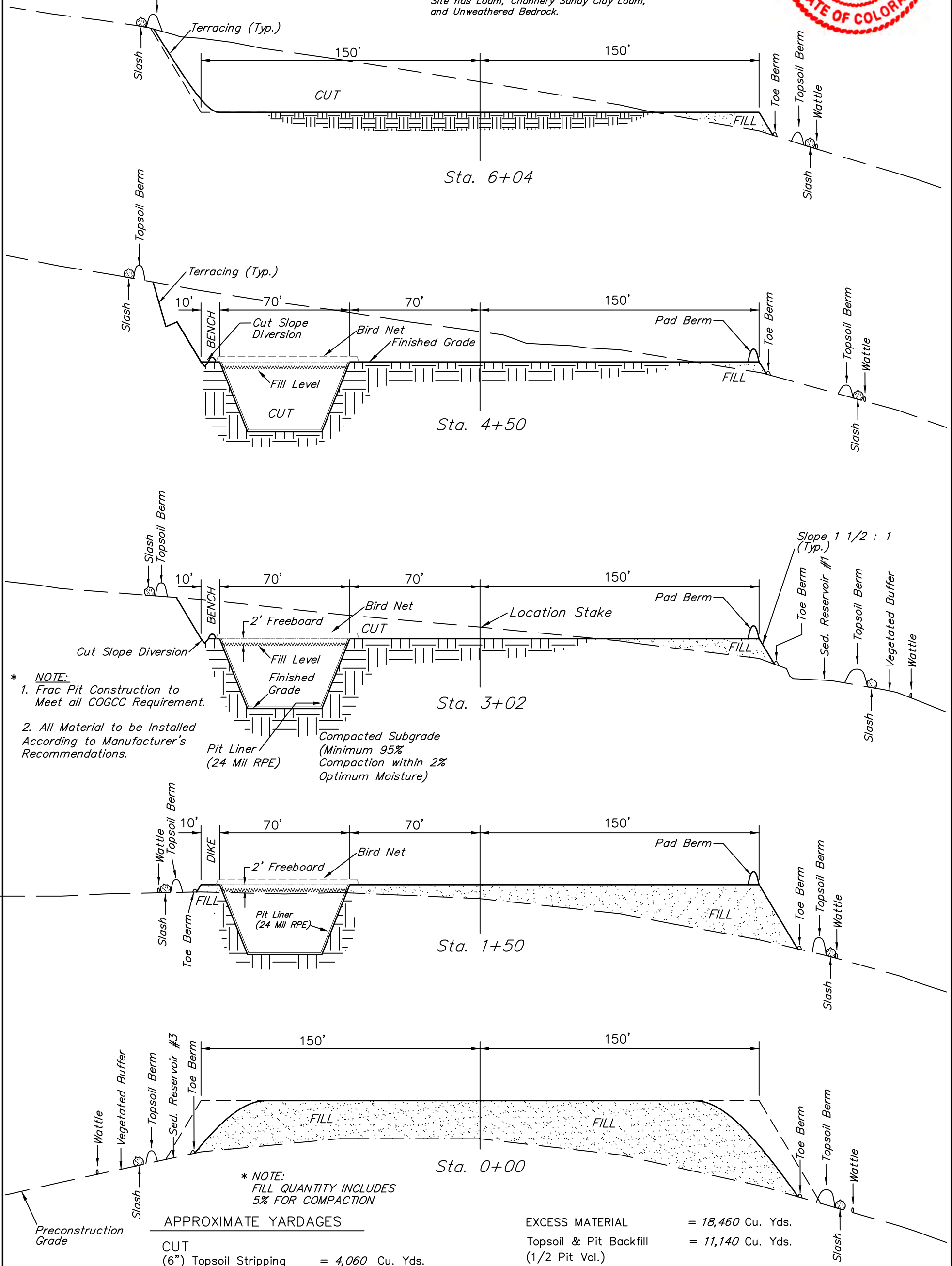
1" = 20'
X-Section
Scale
1" = 50'

DATE: 10-08-09
Drawn By: D.R.B.
Revised: 10-19-09 D.R.B.
Revised: 11-25-09 D.R.B.

TYPICAL CROSS SECTIONS FOR
SGU Frac Pad J25 496
SECTION 25, T4S, R96W, 6th P.M.
NW 1/4 SE 1/4



NOTE:
Per NRCS U.S. Soil Survey for Rifle Area,
parts of Garfield and Mesa Counties, CO.
Site has Loam, Channery Sandy Clay Loam,
and Unweathered Bedrock.



* NOTE:
1. Frac Pit Construction to
Meet all COGCC Requirement.
2. All Material to be Installed
According to Manufacturer's
Recommendations.

Pit Liner
(24 Mil RPE)
Compacted Subgrade
(Minimum 95%
Compaction within 2%
Optimum Moisture)

* NOTE:
FILL QUANTITY INCLUDES
5% FOR COMPACTION

APPROXIMATE YARDAGES

CUT (6") Topsoil Stripping	= 4,060 Cu. Yds.
Remaining Location	= 36,510 Cu. Yds.
TOTAL CUT	= 40,570 CU.YDS.
FILL	= 22,110 CU.YDS.

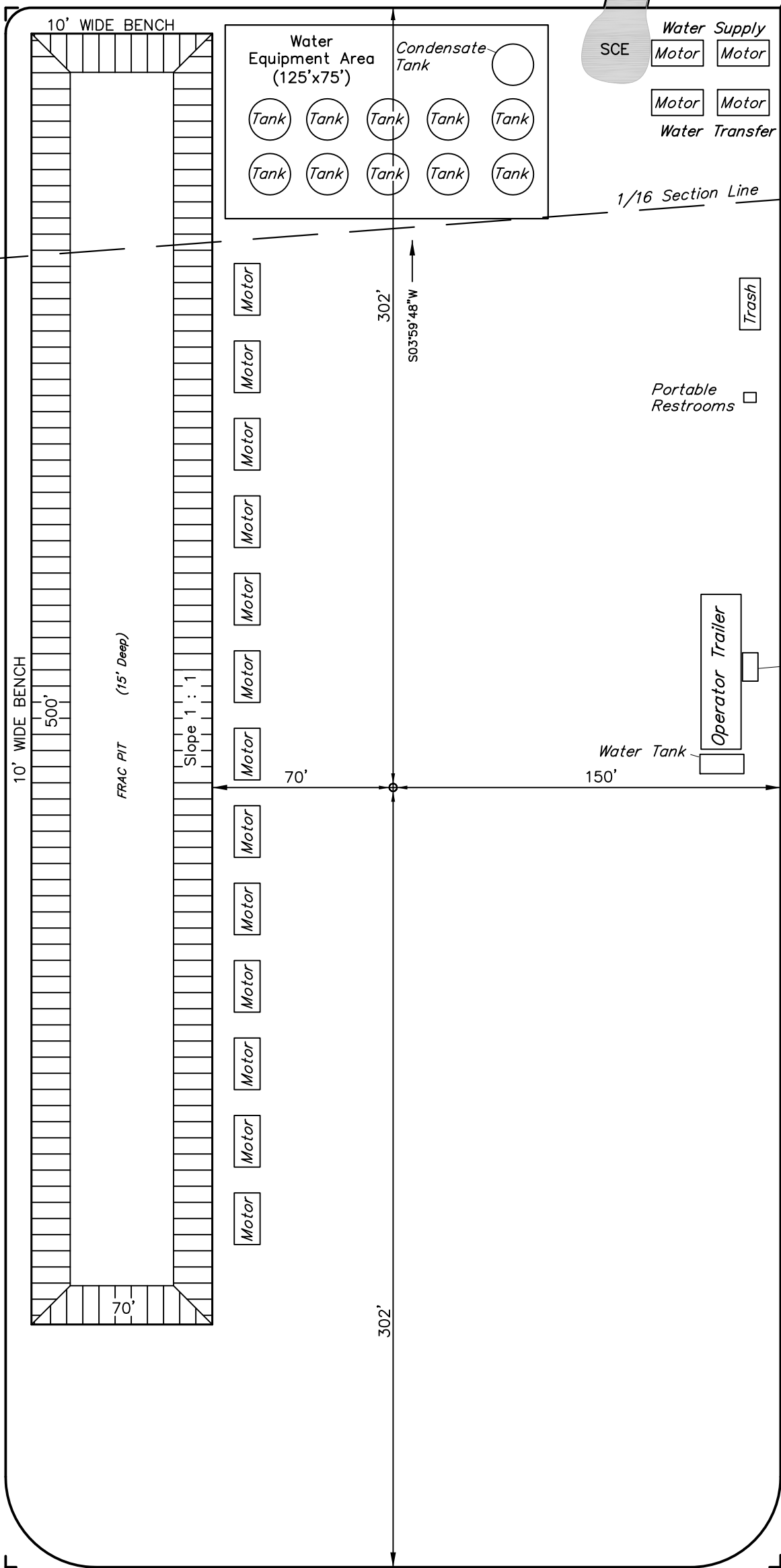
EXCESS MATERIAL	= 18,460 Cu. Yds.
Topsoil & Pit Backfill (1/2 Pit Vol.)	= 11,140 Cu. Yds.
EXCESS UNBALANCE (After Interim Rehabilitation)	= 7,320 Cu. Yds.

EnCana OIL & GAS (USA) INC.
LAYOUT FOR
SGU Frac Pad J25 496
SECTION 25, T4S, R96W, 6th P.M.
NW 1/4 SE 1/4

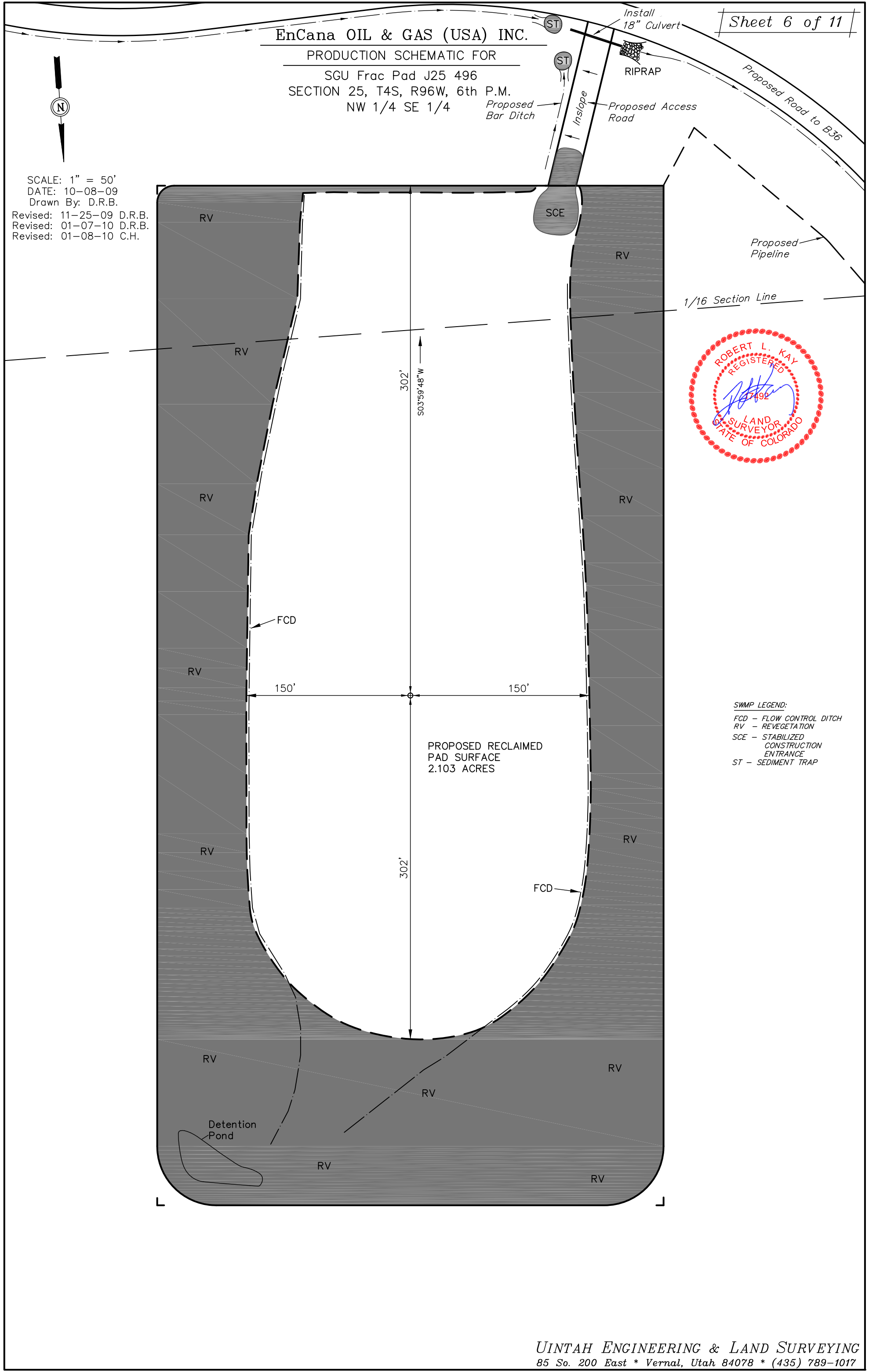
Sheet 5 of 11



SCALE: 1" = 50'
DATE: 10-08-09
Drawn By: D.R.B.
Revised: 11-25-09 D.R.B.
Revised: 01-07-10 D.R.B.



SWMP LEGEND:
SCE - STABILIZED
CONSTRUCTION
ENTRANCE
ST - SEDIMENT TRAP



EnCana OIL & GAS (USA) INC.

SURFACE DISTURBANCE AREA FOR

SGU Frac Pad J25 496

SECTION 25, T4S, R96W, 6th P.M.

NW 1/4 SE 1/4

Sheet 7 of 11

SCALE: 1" = 60'

DATE: 10-08-09

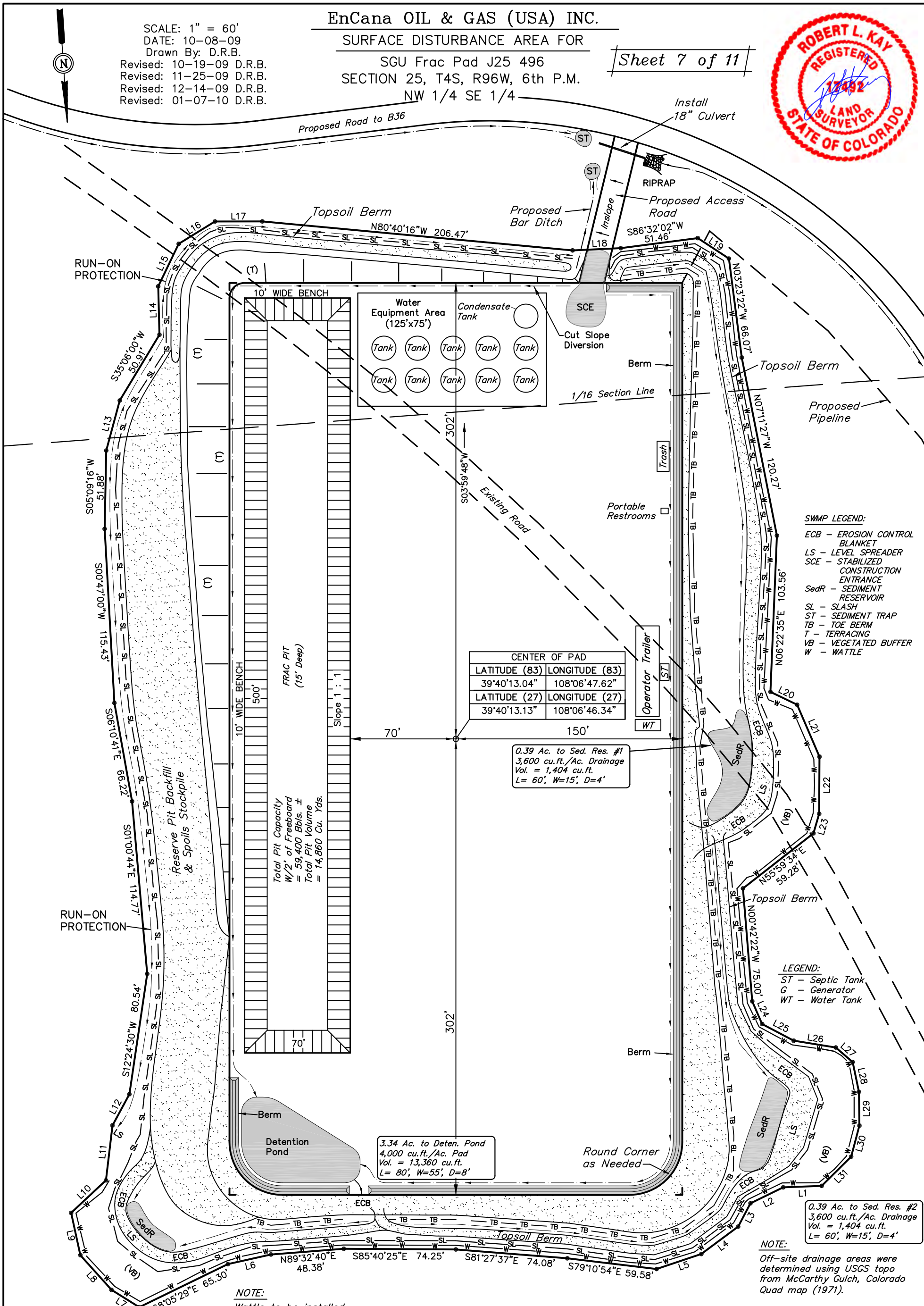
Drawn By: D.R.B.

Revised: 10-19-09 D.R.B.

Revised: 11-25-09 D.R.B.

Revised: 12-14-09 D.R.B.

Revised: 01-07-10 D.R.B.



0.19 Ac. to Sed. Res. #3
3,600 cu.ft./Ac. Drainage
Vol. = 684 cu.ft.
L= 45', W=10', D=4'

APPROXIMATE ACREAGES

APPROX. PAD DISTURBANCE = ±6.739 ACRES

PIPELINE DISTURBANCE = ±1.444 ACRES

ACCESS ROAD DISTURBANCE = ±0.067 ACRES

TOTAL = ±8.250 ACRES

UINTAH ENGINEERING & LAND SURVEYING

85 So. 200 East * Vernal, Utah 84078 * (435) 789-1017

LINE TABLE			LINE TABLE			LINE TABLE		
LINE	BEARING	LENGTH	LINE	BEARING	LENGTH	LINE	BEARING	LENGTH
L1	S88°10'55"E	25.49'	L11	S10°44'50"W	36.62'	L21	N19°18'04"W	37.47'
L2	N68°03'37"E	24.17'	L12	S32°29'23"W	23.52'	L22	N04°16'36"E	37.78'
L3	N31°48'16"E	17.45'	L13	S19°08'25"W	34.35'	L23	N20°21'10"E	13.52'
L4	N57°22'58"E	30.42'	L14	S02°31'19"W	32.04'	L24	N19°31'59"W	16.43'
L5	N75°27'44"E	31.26'	L15	S29°43'23"W	31.25'	L25	N58°11'38"W	23.62'
L6	N81°23'39"E	29.21'	L16	S62°19'29"W	28.20'	L26	N76°47'25"W	28.28'
L7	S54°03'50"E	21.69'	L17	N86°03'59"W	31.38'	L27	N45°15'28"W	14.77'
L8	S37°55'26"E	30.86'	L18	N88°37'30"W	32.00'	L28	N07°49'04"W	20.17'
L9	S08°20'36"E	28.69'	L19	N52°35'45"W	24.67'	L29	N03°09'54"E	22.35'
L10	S50°56'46"W	31.60'	L20	N60°15'20"W	19.61'	L30	N18°52'33"E	21.29'
						L31	N49°16'00"E	27.48'