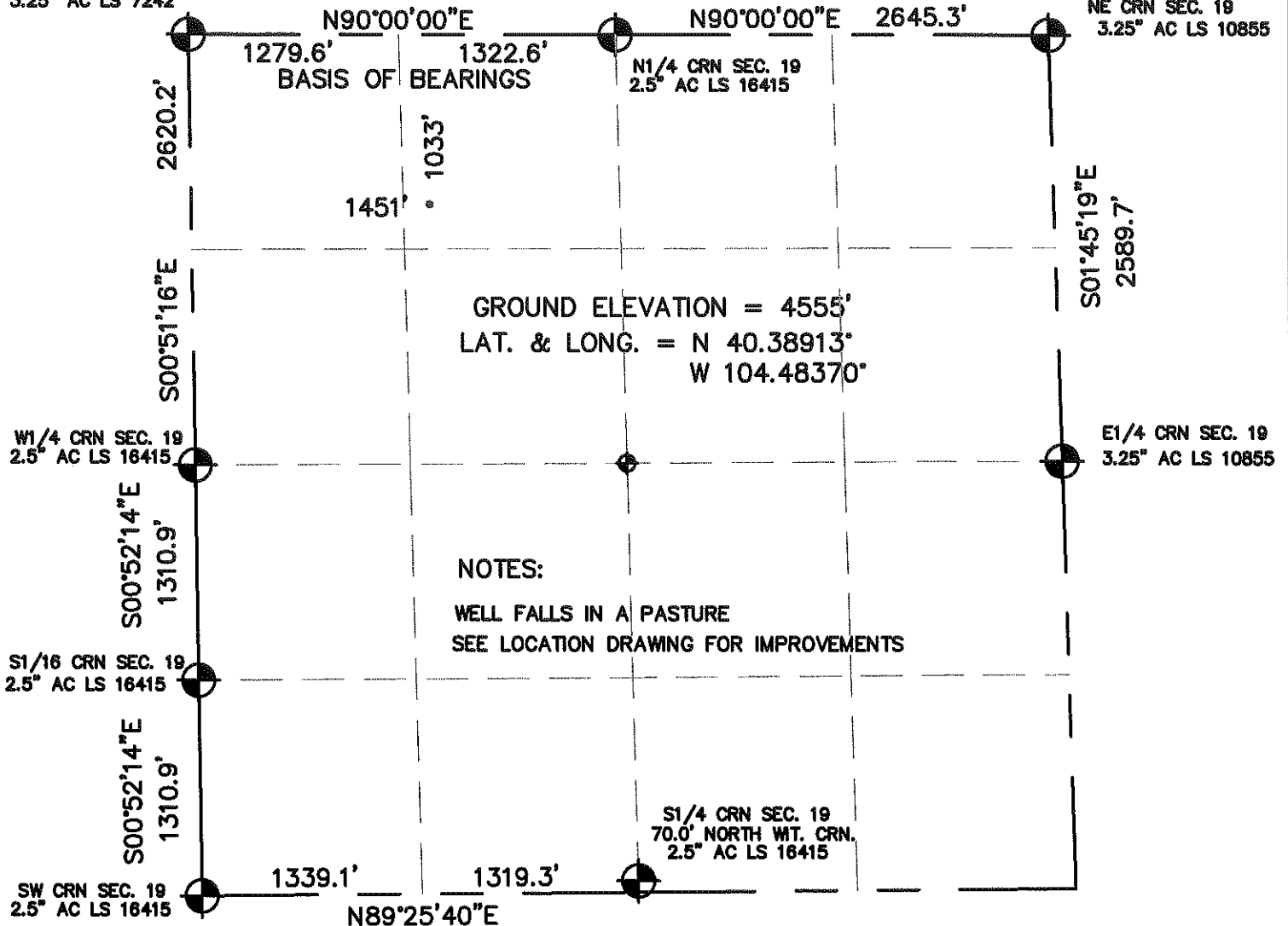


# WELL LOCATION CERTIFICATE

NW CRN SEC. 19  
3.25" AC LS 7242

SECTION 19, TOWNSHIP 5 NORTH, RANGE 63 WEST, 6TH P.M.

NE CRN SEC. 19  
3.25" AC LS 10855



## NOTES:

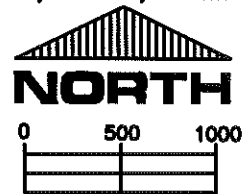
WELL FALLS IN A PASTURE  
SEE LOCATION DRAWING FOR IMPROVEMENTS

I HEREBY STATE TO PETROLEUM DEV. CORP. THAT THIS WELL LOCATION CERTIFICATE FOR THE WELL OCHSNER 19A IS LOCATED 1033' FNL & 1451' FWL, SEC. 19, T5N, R63W, 6PM.



## LEGEND

- = FOUND MONUMENT
- = PROPOSED WELL



SCALE 1" = 1000'

ELEVATION SOURCE = USGS 7.5' QUAD.MAP CONTOURS  
NGVD 1929 DATUM.

LAT. & LONG. ARE DIFFERENTIALLY CORRECTED (NAD'83)  
USING (DGPS) WITH (PDOP) VALUES LESS THAN SIX (6).

SHOWN DISTANCES ARE FIELD MEASURED - EXTERIOR SECTION LINES  
ARE DRAWN TO SCALE (BEST APPROX. OR FOUND MONUMENT ).

THOMAS G. CARLSON, PLS 24657  
HORSESHOE SURVEYING, LLC

THIS IS NOT A MONUMENTED BOUNDARY SURVEY, IT IS ONLY A  
DRAWING INTENDED TO DEPICT THE WELL LOCATION TO SECTION LINES.

DISTANCES TO WELL SHOWN PERPENDICULAR  
TO SECTION LINES.

PREPARED BY:		HORSESHOE SURVEYING, LLC PO BOX 150458 LAKEWOOD, CO 80215 (720)872-0196		WELL NAME: OCHSNER 19A	
DRAWING DATE: 12-16-09		BY: TGC		LOCATION: WELD COUNTY, CO NW1/4, SEC. 19, T5N, R63W, 6TH P.M.	
FIELD DATE: 12-15-09				JOB NO.	
		CHKD:		SHEET NO. 1 OF 1	