

Stell Surveying Services, LLC

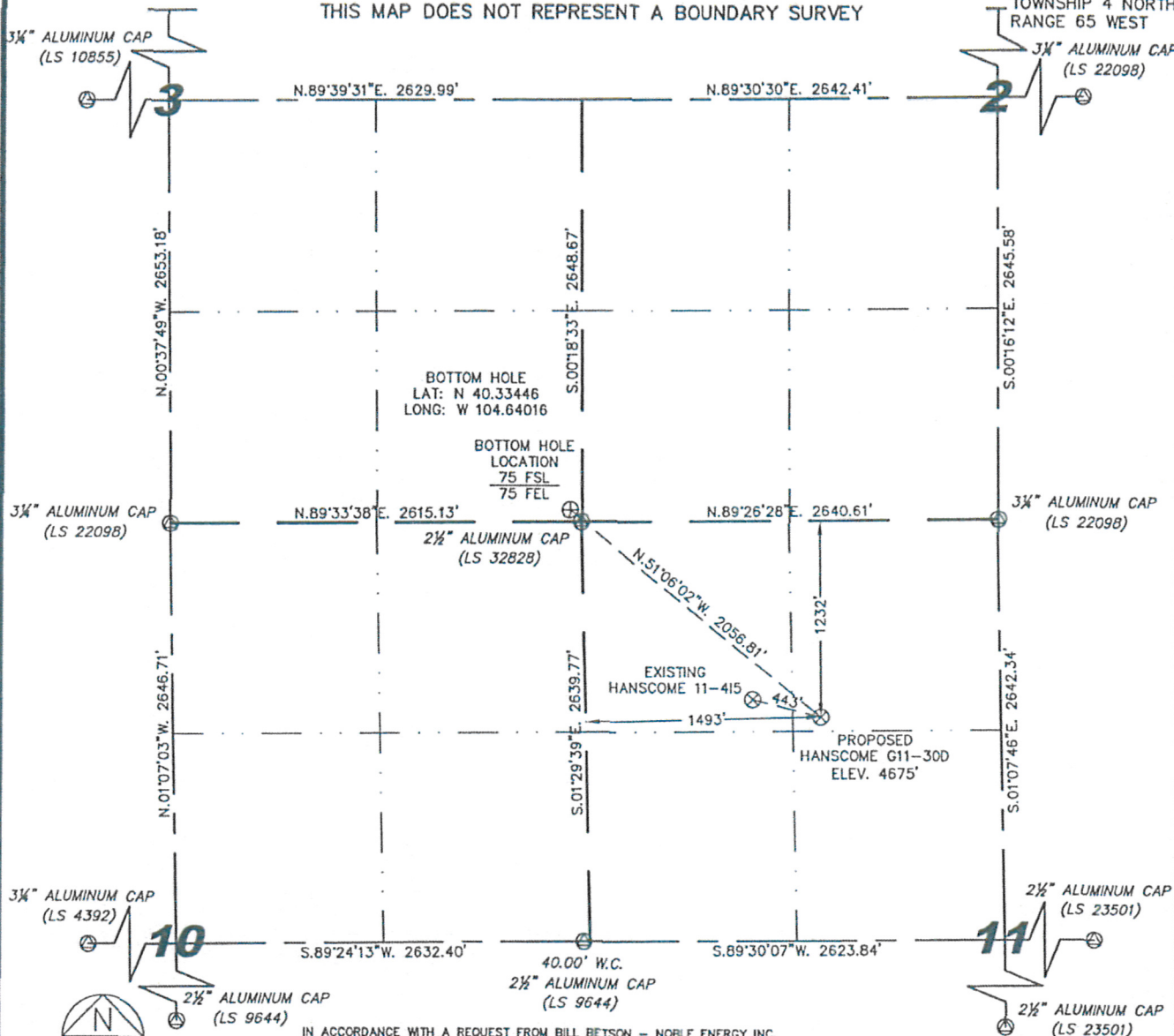
1102 West 19th Street P.O. BOX 2073

Cheyenne, Wyoming 82009

WELL LOCATION CERTIFICATE

THIS MAP DOES NOT REPRESENT A BOUNDARY SURVEY

SECTION 11
TOWNSHIP 4 NORTH
RANGE 65 WEST



IN ACCORDANCE WITH A REQUEST FROM BILL BETSON - NOBLE ENERGY INC, STELL SURVEYING SERVICES, LLC HAS DETERMINED THE LOCATION OF THE HANSCOME G11-300 WELL TO BE 1232' FNL, 1493' FNL, AS MEASURED AT NINETY (90) DEGREES FROM THE SECTION LINES, SECTION 11, TOWNSHIP 4 NORTH, RANGE 65 WEST, 6TH PRINCIPLE MERIDIAN, WELD COUNTY, COLORADO.

I HEREBY CERTIFY THAT THIS WELL LOCATION CERTIFICATE WAS PREPARED BY ME, OR UNDER MY DIRECT SUPERVISION, THAT THE FIELD WORK WAS COMPLETED ON 08/20/2009, FOR AND ON BEHALF OF NOBLE ENERGY INC, THAT IT IS NOT A LAND SURVEY PLAT OR AN IMPROVEMENT SURVEY PLAT, AND THAT IT IS NOT TO BE RELIED UPON FOR ESTABLISHMENT OF FENCE, BUILDING, OR OTHER FUTURE IMPROVEMENT LINES.

NOTES:

- 1) BASIS OF BEARINGS FOR THIS MAP ARE BASED UPON GPS OBSERVATIONS MADE ON 01/28/2009 BETWEEN MONUMENTS LOCATED AT THE SOUTHEAST SECTION CORNER AND THE NORTHEAST SECTION CORNER OF SAID SECTION AND WITH ALL BEARINGS SHOWN HEREON RELATIVE THERETO.
- 2) ELEVATIONS ARE BASED UPON NGS OPUS SOLUTION NAVD 88 DATUM.
- 3) THE NEAREST EXISTING WELL IS: HANSCOME 11-415, 443' NORTHWEST.
- 4) SEE VISIBLE IMPROVEMENTS EXHIBIT FOR ALL IMPROVEMENTS WITHIN 400'.
- 5) THE LOCATION FALLS IN IRRIGATED CROP LAND.

LATITUDE & LONGITUDE (NAD 83 SURFACE HOLE):
LATITUDE: N 40.33087'
LONGITUDE: W 104.63447'
PDOP: 2.7
QUARTER-QUARTER: NE/4NW/4
NEAREST PROPERTY LINE: 1232' TO THE NORTH

LEGEND

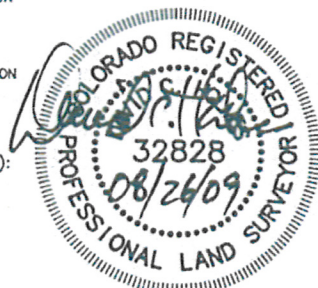
- ⊙ FOUND SURVEY MONUMENT PER MONUMENT RECORD - EXCEPTIONS NOTED.
- (C) CALCULATED DIMENSION

NOTICE: According to Colorado law you MUST commence any legal action based upon any defect in this W.L.C. within three years after you first discover such defect. In no event may any action based upon any defect in this W.L.C. be commenced more than ten years from this said date of the certification shown hereon.

David C. Holmes
Professional Land Surveyor Registration No. 32828
State of Colorado

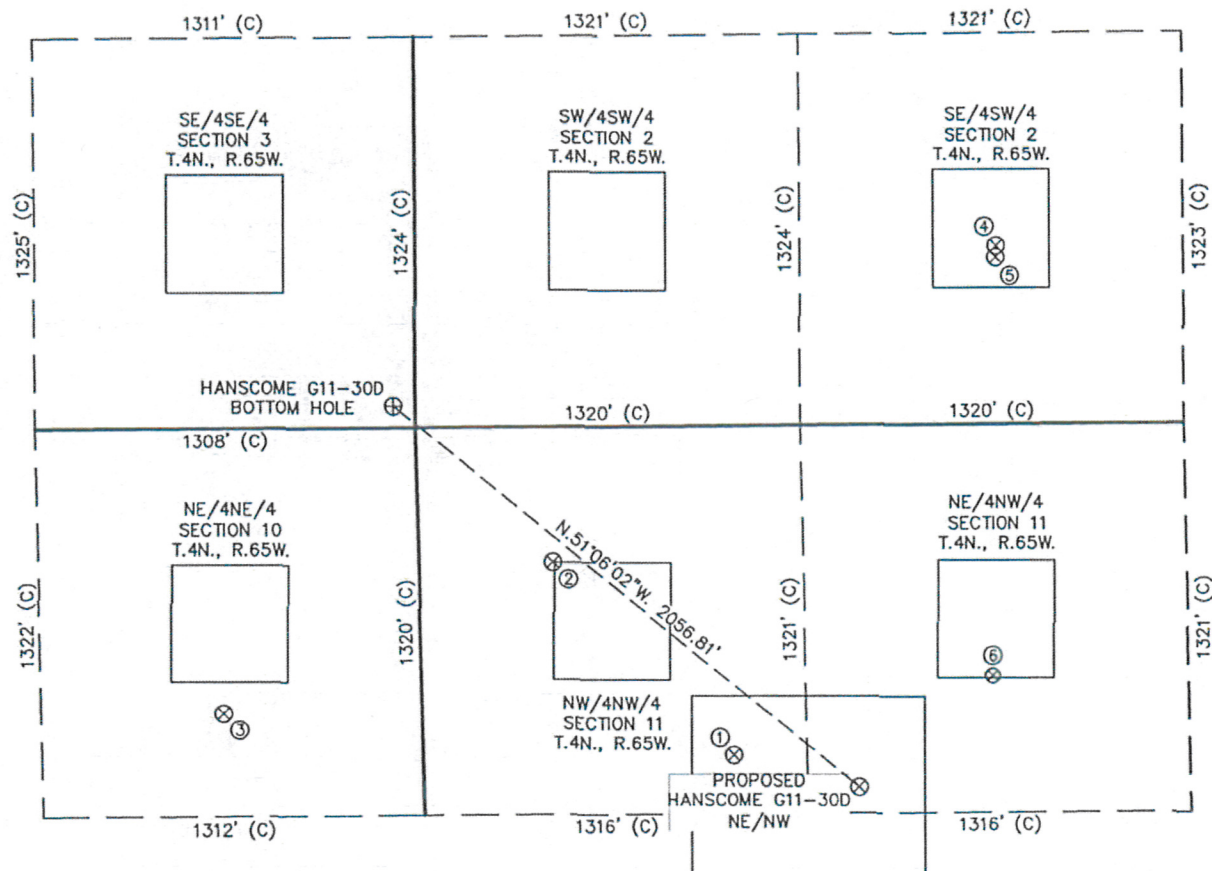
Completed 08/21/2009

JOB #: 09086



SITE SKETCH - HANSCOME G11-30D

SECTION 11
TOWNSHIP 4 NORTH
RANGE 65 WEST



①	②	③	④	⑤	⑥
HANSCOME 11-415 NW/NW SEC. 11 1120' FNL 1066' FWL EL 4675' N 40.33118 W 104.63600 PDOP 2.9	HANSCOME G11-4 NW/NW SEC. 11 458' FNL 460' FWL EL 4673' N 40.33299 W 104.63822 PDOP 2.1	HSR-BERTLIN 1-10 NE/NE SEC. 10 971' FNL 682' FEL EL 4673' N 40.33159 W 104.64229 PDOP 1.9	LATHAM RESERVOIR NO. 1 SE/SW SEC. 2 603' FSL 1996' FWL EL 4673' N 40.33591 W 104.63273 PDOP 1.9	LATHAM 2-31 SE/SW SEC. 2 564' FSL 1994' FWL EL 4673' N 40.33580 W 104.63273 PDOP 1.9	HANSCOME NO. 3 NE/NW SEC. 11 853' FNL 1961' FWL EL 4673' N 40.33191 W 104.63281 PDOP 2.2

NOTES:

- THIS SKETCH DOES NOT REPRESENT A BOUNDARY SURVEY.
- THE DATUM FOR THE LATITUDES AND LONGITUDES ON THIS SKETCH IS NAD83.

