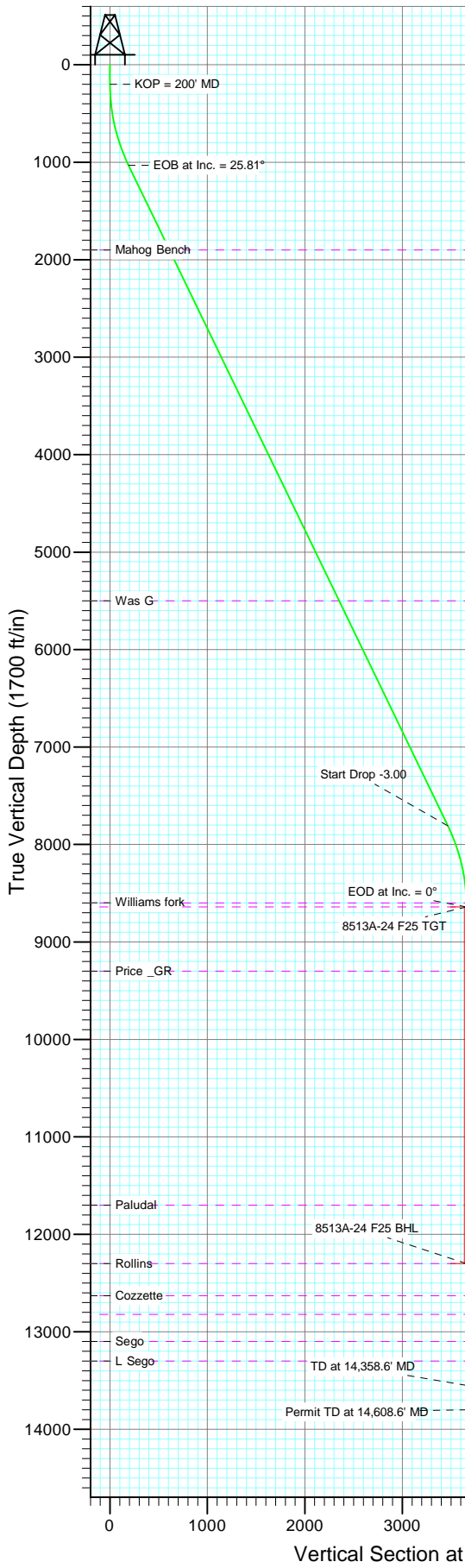


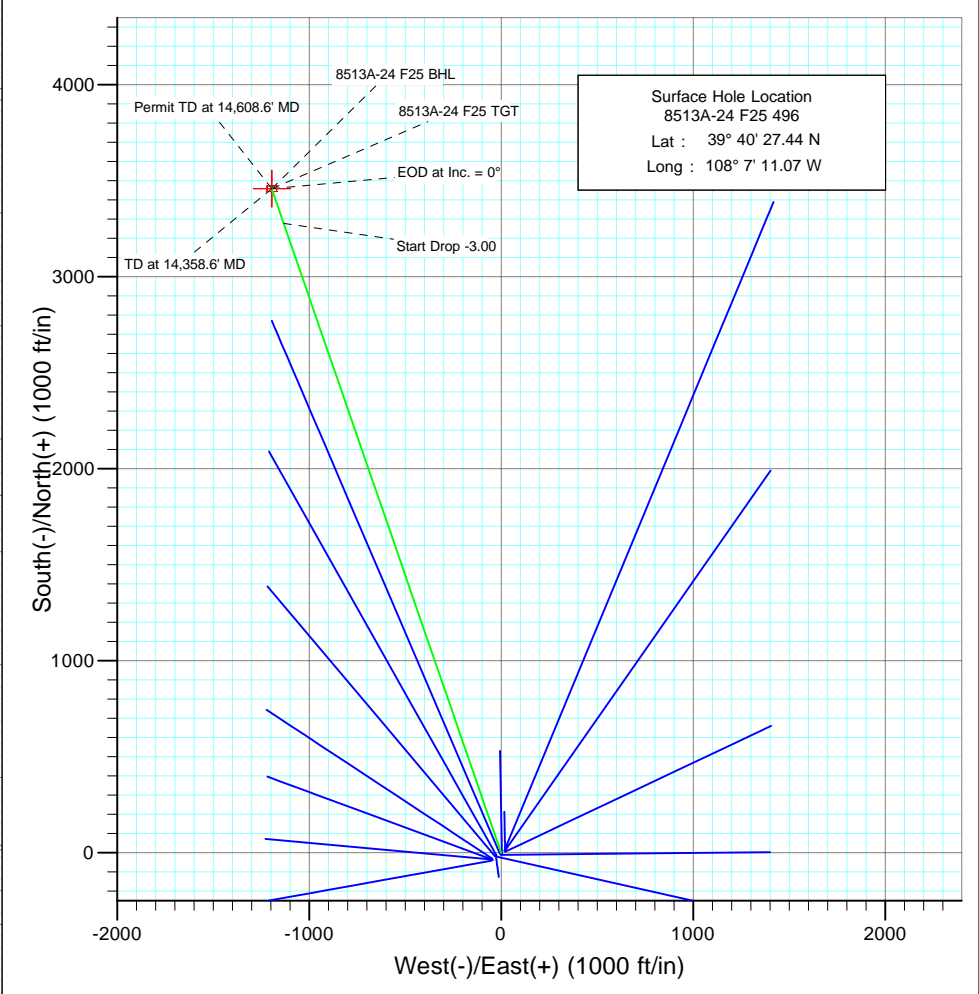


Project: Story Gulch
 Site: F25 496
 Well: 8513A-24 F25 496
 Wellbore: DD
 Design: Plan #1

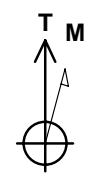


SECTION DETAILS

Sec	MD	Inc	Azi	TVD	+N/-S	+E/-W	DLeg	TFace	VSec	Target
1	0.0	0.00	0.00	0.0	0.0	0.0	0.00	0.00	0.0	
2	200.0	0.00	0.00	200.0	0.0	0.0	0.00	0.00	0.0	
3	1060.4	25.81	340.94	1031.5	180.1	-62.2	3.00	340.94	190.5	
4	8588.3	25.81	340.94	7808.5	3278.0	-1132.7	0.00	0.00	3468.2	
5	9448.6	0.00	0.00	8640.0	3458.1	-1194.9	3.00	180.00	3658.7	8513A-24 F25 TGT
6	13108.6	0.00	0.00	12300.0	3458.1	-1194.9	0.00	0.00	3658.7	8513A-24 F25 BHL
7	14358.6	0.00	0.00	13550.0	3458.1	-1194.9	0.00	0.00	3658.7	
8	14608.6	0.00	0.00	13800.0	3458.1	-1194.9	0.00	0.00	3658.7	



Bottom Hole Location
 8513A-24 F25 496
 Lat : 39° 41' 1.62 N
 Long : 108° 7' 26.35 W



Azimuths to True North
 Magnetic North: 10.64°
 Magnetic Field
 Strength: 52519.1snT
 Dip Angle: 65.92°
 Date: 9/2/2009
 Model: IGRF200510

FORMATION TOP DETAILS

TVDPATH	MDPATH	FORMATION
1900.0	2025.0	Mahog Bench
5500.0	6024.0	Was G
8600.0	9408.6	Williams fork
8640.0	9448.6	Top of Gas
9300.0	10108.6	Price_GR
11700.0	12508.6	Paludal
12300.0	13108.6	Rollins
12630.0	13438.6	Cozzette
12820.0	13628.6	Corcoran
13100.0	13908.6	Segoe
13300.0	14108.6	L Segoe

DESIGN DETAILS: Plan #1
 Job #95xxx: KR

KBE @ 8320.0ft (Original Well Elev)

Target	Azimuth	Origin	N/S	E/W	From TVD
8513A-24 F25 BHL	340.94	Slot	0.0	0.0	0.0

Planning Report

Database:	US EDM 2003.21 Multi User Db	Local Co-ordinate Reference:	Well 8513A-24 F25 496
Company:	EnCana Oil & Gas (USA) Inc	TVD Reference:	KBE @ 8320.0ft (Original Well Elev)
Project:	Story Gulch	MD Reference:	KBE @ 8320.0ft (Original Well Elev)
Site:	F25 496	North Reference:	True
Well:	8513A-24 F25 496	Survey Calculation Method:	Minimum Curvature
Wellbore:	DD		
Design:	Plan #1		

Project	Story Gulch		
Map System:	US State Plane 1983	System Datum:	Mean Sea Level
Geo Datum:	North American Datum 1983		
Map Zone:	Colorado Central Zone		

Site	F25 496				
Site Position:		Northing:	1,681,091.06 ft	Latitude:	39° 40' 27.10 N
From:	Lat/Long	Easting:	2,262,632.54 ft	Longitude:	108° 7' 11.76 W
Position Uncertainty:	0.0 ft	Slot Radius:	in	Grid Convergence:	-1.65 °

Well	8513A-24 F25 496					
Well Position	+N/-S	0.0 ft	Northing:	1,681,124.09 ft	Latitude:	39° 40' 27.44 N
	+E/-W	0.0 ft	Easting:	2,262,687.44 ft	Longitude:	108° 7' 11.07 W
Position Uncertainty		0.0 ft	Wellhead Elevation:	ft	Ground Level:	8,298.0 ft

Wellbore	DD				
Magnetics	Model Name	Sample Date	Declination	Dip Angle	Field Strength
	IGRF200510	9/2/2009	(°)	(°)	(nT)
			10.64	65.92	52,519

Design	Plan #1			
Audit Notes:				
Version:	Phase:	PLAN	Tie On Depth:	0.0
Vertical Section:	Depth From (TVD)	+N/-S	+E/-W	Direction
	(ft)	(ft)	(ft)	(°)
	0.0	0.0	0.0	340.94

Plan Sections										
Measured Depth (ft)	Inclination (°)	Azimuth (°)	Vertical Depth (ft)	+N/-S (ft)	+E/-W (ft)	Dogleg Rate (°/100ft)	Build Rate (°/100ft)	Turn Rate (°/100ft)	TFO (°)	Target
0.0	0.00	0.00	0.0	0.0	0.0	0.00	0.00	0.00	0.00	
200.0	0.00	0.00	200.0	0.0	0.0	0.00	0.00	0.00	0.00	
1,060.4	25.81	340.94	1,031.5	180.1	-62.2	3.00	3.00	0.00	340.94	
8,588.3	25.81	340.94	7,808.5	3,278.0	-1,132.7	0.00	0.00	0.00	0.00	
9,448.6	0.00	0.00	8,640.0	3,458.1	-1,194.9	3.00	-3.00	0.00	180.00	8513A-24 F25 TGT
13,108.6	0.00	0.00	12,300.0	3,458.1	-1,194.9	0.00	0.00	0.00	0.00	8513A-24 F25 BHL
14,358.6	0.00	0.00	13,550.0	3,458.1	-1,194.9	0.00	0.00	0.00	0.00	
14,608.6	0.00	0.00	13,800.0	3,458.1	-1,194.9	0.00	0.00	0.00	0.00	

Planning Report

Database:	US EDM 2003.21 Multi User Db	Local Co-ordinate Reference:	Well 8513A-24 F25 496
Company:	EnCana Oil & Gas (USA) Inc	TVD Reference:	KBE @ 8320.0ft (Original Well Elev)
Project:	Story Gulch	MD Reference:	KBE @ 8320.0ft (Original Well Elev)
Site:	F25 496	North Reference:	True
Well:	8513A-24 F25 496	Survey Calculation Method:	Minimum Curvature
Wellbore:	DD		
Design:	Plan #1		

Planned Survey									
Measured Depth (ft)	Inclination (°)	Azimuth (°)	Vertical Depth (ft)	+N/-S (ft)	+E/-W (ft)	Vertical Section (ft)	Dogleg Rate (°/100ft)	Build Rate (°/100ft)	Comments / Formations
0.0	0.00	0.00	0.0	0.0	0.0	0.0	0.00	0.00	
100.0	0.00	0.00	100.0	0.0	0.0	0.0	0.00	0.00	
200.0	0.00	0.00	200.0	0.0	0.0	0.0	0.00	0.00	KOP = 200' MD
300.0	3.00	340.94	300.0	2.5	-0.9	2.6	3.00	3.00	
400.0	6.00	340.94	399.6	9.9	-3.4	10.5	3.00	3.00	
500.0	9.00	340.94	498.8	22.2	-7.7	23.5	3.00	3.00	
600.0	12.00	340.94	597.1	39.4	-13.6	41.7	3.00	3.00	
700.0	15.00	340.94	694.3	61.5	-21.3	65.1	3.00	3.00	
800.0	18.00	340.94	790.2	88.3	-30.5	93.5	3.00	3.00	
900.0	21.00	340.94	884.4	119.9	-41.4	126.9	3.00	3.00	
1,000.0	24.00	340.94	976.8	156.1	-53.9	165.1	3.00	3.00	
1,060.4	25.81	340.94	1,031.5	180.1	-62.2	190.5	3.00	3.00	EOB at Inc. = 25.81°
1,100.0	25.81	340.94	1,067.2	196.4	-67.9	207.8	0.00	0.00	
1,200.0	25.81	340.94	1,157.3	237.6	-82.1	251.3	0.00	0.00	
1,300.0	25.81	340.94	1,247.3	278.7	-96.3	294.9	0.00	0.00	
1,400.0	25.81	340.94	1,337.3	319.9	-110.5	338.4	0.00	0.00	
1,500.0	25.81	340.94	1,427.3	361.0	-124.7	382.0	0.00	0.00	
1,600.0	25.81	340.94	1,517.4	402.2	-139.0	425.5	0.00	0.00	
1,700.0	25.81	340.94	1,607.4	443.3	-153.2	469.0	0.00	0.00	
1,800.0	25.81	340.94	1,697.4	484.5	-167.4	512.6	0.00	0.00	
1,900.0	25.81	340.94	1,787.4	525.6	-181.6	556.1	0.00	0.00	
2,000.0	25.81	340.94	1,877.5	566.8	-195.8	599.7	0.00	0.00	
2,025.0	25.81	340.94	1,900.0	577.1	-199.4	610.6	0.00	0.00	Mahog Bench
2,100.0	25.81	340.94	1,967.5	607.9	-210.1	643.2	0.00	0.00	
2,200.0	25.81	340.94	2,057.5	649.1	-224.3	686.7	0.00	0.00	
2,300.0	25.81	340.94	2,147.5	690.2	-238.5	730.3	0.00	0.00	
2,400.0	25.81	340.94	2,237.5	731.4	-252.7	773.8	0.00	0.00	
2,500.0	25.81	340.94	2,327.6	772.5	-266.9	817.3	0.00	0.00	
2,600.0	25.81	340.94	2,417.6	813.7	-281.2	860.9	0.00	0.00	
2,700.0	25.81	340.94	2,507.6	854.8	-295.4	904.4	0.00	0.00	
2,800.0	25.81	340.94	2,597.6	896.0	-309.6	948.0	0.00	0.00	
2,900.0	25.81	340.94	2,687.7	937.1	-323.8	991.5	0.00	0.00	
3,000.0	25.81	340.94	2,777.7	978.3	-338.0	1,035.0	0.00	0.00	
3,100.0	25.81	340.94	2,867.7	1,019.4	-352.3	1,078.6	0.00	0.00	
3,200.0	25.81	340.94	2,957.7	1,060.6	-366.5	1,122.1	0.00	0.00	
3,300.0	25.81	340.94	3,047.8	1,101.7	-380.7	1,165.7	0.00	0.00	
3,400.0	25.81	340.94	3,137.8	1,142.9	-394.9	1,209.2	0.00	0.00	
3,500.0	25.81	340.94	3,227.8	1,184.1	-409.1	1,252.7	0.00	0.00	
3,600.0	25.81	340.94	3,317.8	1,225.2	-423.4	1,296.3	0.00	0.00	
3,700.0	25.81	340.94	3,407.9	1,266.4	-437.6	1,339.8	0.00	0.00	
3,800.0	25.81	340.94	3,497.9	1,307.5	-451.8	1,383.4	0.00	0.00	
3,900.0	25.81	340.94	3,587.9	1,348.7	-466.0	1,426.9	0.00	0.00	
4,000.0	25.81	340.94	3,677.9	1,389.8	-480.2	1,470.4	0.00	0.00	
4,100.0	25.81	340.94	3,768.0	1,431.0	-494.5	1,514.0	0.00	0.00	
4,200.0	25.81	340.94	3,858.0	1,472.1	-508.7	1,557.5	0.00	0.00	
4,300.0	25.81	340.94	3,948.0	1,513.3	-522.9	1,601.1	0.00	0.00	
4,400.0	25.81	340.94	4,038.0	1,554.4	-537.1	1,644.6	0.00	0.00	
4,500.0	25.81	340.94	4,128.1	1,595.6	-551.3	1,688.1	0.00	0.00	
4,600.0	25.81	340.94	4,218.1	1,636.7	-565.6	1,731.7	0.00	0.00	
4,700.0	25.81	340.94	4,308.1	1,677.9	-579.8	1,775.2	0.00	0.00	
4,800.0	25.81	340.94	4,398.1	1,719.0	-594.0	1,818.8	0.00	0.00	
4,900.0	25.81	340.94	4,488.1	1,760.2	-608.2	1,862.3	0.00	0.00	

Planning Report

Database:	US EDM 2003.21 Multi User Db	Local Co-ordinate Reference:	Well 8513A-24 F25 496
Company:	EnCana Oil & Gas (USA) Inc	TVD Reference:	KBE @ 8320.0ft (Original Well Elev)
Project:	Story Gulch	MD Reference:	KBE @ 8320.0ft (Original Well Elev)
Site:	F25 496	North Reference:	True
Well:	8513A-24 F25 496	Survey Calculation Method:	Minimum Curvature
Wellbore:	DD		
Design:	Plan #1		

Planned Survey									
Measured Depth (ft)	Inclination (°)	Azimuth (°)	Vertical Depth (ft)	+N/-S (ft)	+E/-W (ft)	Vertical Section (ft)	Dogleg Rate (°/100ft)	Build Rate (°/100ft)	Comments / Formations
5,000.0	25.81	340.94	4,578.2	1,801.3	-622.4	1,905.8	0.00	0.00	
5,100.0	25.81	340.94	4,668.2	1,842.5	-636.7	1,949.4	0.00	0.00	
5,200.0	25.81	340.94	4,758.2	1,883.6	-650.9	1,992.9	0.00	0.00	
5,300.0	25.81	340.94	4,848.2	1,924.8	-665.1	2,036.5	0.00	0.00	
5,400.0	25.81	340.94	4,938.3	1,965.9	-679.3	2,080.0	0.00	0.00	
5,500.0	25.81	340.94	5,028.3	2,007.1	-693.5	2,123.5	0.00	0.00	
5,600.0	25.81	340.94	5,118.3	2,048.2	-707.8	2,167.1	0.00	0.00	
5,700.0	25.81	340.94	5,208.3	2,089.4	-722.0	2,210.6	0.00	0.00	
5,800.0	25.81	340.94	5,298.4	2,130.6	-736.2	2,254.2	0.00	0.00	
5,900.0	25.81	340.94	5,388.4	2,171.7	-750.4	2,297.7	0.00	0.00	
6,000.0	25.81	340.94	5,478.4	2,212.9	-764.6	2,341.2	0.00	0.00	
6,024.0	25.81	340.94	5,500.0	2,222.7	-768.0	2,351.7	0.00	0.00	Was G
6,100.0	25.81	340.94	5,568.4	2,254.0	-778.9	2,384.8	0.00	0.00	
6,200.0	25.81	340.94	5,658.5	2,295.2	-793.1	2,428.3	0.00	0.00	
6,300.0	25.81	340.94	5,748.5	2,336.3	-807.3	2,471.9	0.00	0.00	
6,400.0	25.81	340.94	5,838.5	2,377.5	-821.5	2,515.4	0.00	0.00	
6,500.0	25.81	340.94	5,928.5	2,418.6	-835.7	2,558.9	0.00	0.00	
6,600.0	25.81	340.94	6,018.6	2,459.8	-849.9	2,602.5	0.00	0.00	
6,700.0	25.81	340.94	6,108.6	2,500.9	-864.2	2,646.0	0.00	0.00	
6,800.0	25.81	340.94	6,198.6	2,542.1	-878.4	2,689.6	0.00	0.00	
6,900.0	25.81	340.94	6,288.6	2,583.2	-892.6	2,733.1	0.00	0.00	
7,000.0	25.81	340.94	6,378.6	2,624.4	-906.8	2,776.6	0.00	0.00	
7,100.0	25.81	340.94	6,468.7	2,665.5	-921.0	2,820.2	0.00	0.00	
7,200.0	25.81	340.94	6,558.7	2,706.7	-935.3	2,863.7	0.00	0.00	
7,300.0	25.81	340.94	6,648.7	2,747.8	-949.5	2,907.3	0.00	0.00	
7,400.0	25.81	340.94	6,738.7	2,789.0	-963.7	2,950.8	0.00	0.00	
7,500.0	25.81	340.94	6,828.8	2,830.1	-977.9	2,994.3	0.00	0.00	
7,600.0	25.81	340.94	6,918.8	2,871.3	-992.1	3,037.9	0.00	0.00	
7,700.0	25.81	340.94	7,008.8	2,912.4	-1,006.4	3,081.4	0.00	0.00	
7,800.0	25.81	340.94	7,098.8	2,953.6	-1,020.6	3,125.0	0.00	0.00	
7,900.0	25.81	340.94	7,188.9	2,994.8	-1,034.8	3,168.5	0.00	0.00	
8,000.0	25.81	340.94	7,278.9	3,035.9	-1,049.0	3,212.0	0.00	0.00	
8,100.0	25.81	340.94	7,368.9	3,077.1	-1,063.2	3,255.6	0.00	0.00	
8,200.0	25.81	340.94	7,458.9	3,118.2	-1,077.5	3,299.1	0.00	0.00	
8,300.0	25.81	340.94	7,549.0	3,159.4	-1,091.7	3,342.7	0.00	0.00	
8,400.0	25.81	340.94	7,639.0	3,200.5	-1,105.9	3,386.2	0.00	0.00	
8,500.0	25.81	340.94	7,729.0	3,241.7	-1,120.1	3,429.7	0.00	0.00	
8,588.3	25.81	340.94	7,808.5	3,278.0	-1,132.7	3,468.2	0.00	0.00	Start Drop -3.00
8,600.0	25.46	340.94	7,819.0	3,282.8	-1,134.3	3,473.2	3.00	-3.00	
8,700.0	22.46	340.94	7,910.4	3,321.2	-1,147.6	3,513.8	3.00	-3.00	
8,800.0	19.46	340.94	8,003.8	3,355.0	-1,159.3	3,549.6	3.00	-3.00	
8,900.0	16.46	340.94	8,098.9	3,384.1	-1,169.3	3,580.4	3.00	-3.00	
9,000.0	13.46	340.94	8,195.5	3,408.5	-1,177.8	3,606.2	3.00	-3.00	
9,100.0	10.46	340.94	8,293.3	3,428.1	-1,184.5	3,627.0	3.00	-3.00	
9,200.0	7.46	340.94	8,392.1	3,442.8	-1,189.6	3,642.5	3.00	-3.00	
9,300.0	4.46	340.94	8,491.5	3,452.6	-1,193.0	3,652.9	3.00	-3.00	
9,400.0	1.46	340.94	8,591.4	3,457.5	-1,194.7	3,658.1	3.00	-3.00	
9,408.6	1.20	340.94	8,600.0	3,457.7	-1,194.8	3,658.3	3.00	-3.00	Williams fork
9,448.6	0.00	0.00	8,640.0	3,458.1	-1,194.9	3,658.7	3.00	-3.00	EOD at Inc. = 0° - Top of Gas - 8513A-24 F25 1
9,500.0	0.00	0.00	8,691.4	3,458.1	-1,194.9	3,658.7	0.00	0.00	
9,600.0	0.00	0.00	8,791.4	3,458.1	-1,194.9	3,658.7	0.00	0.00	
9,700.0	0.00	0.00	8,891.4	3,458.1	-1,194.9	3,658.7	0.00	0.00	

Planning Report

Database:	US EDM 2003.21 Multi User Db	Local Co-ordinate Reference:	Well 8513A-24 F25 496
Company:	EnCana Oil & Gas (USA) Inc	TVD Reference:	KBE @ 8320.0ft (Original Well Elev)
Project:	Story Gulch	MD Reference:	KBE @ 8320.0ft (Original Well Elev)
Site:	F25 496	North Reference:	True
Well:	8513A-24 F25 496	Survey Calculation Method:	Minimum Curvature
Wellbore:	DD		
Design:	Plan #1		

Planned Survey									
Measured Depth (ft)	Inclination (°)	Azimuth (°)	Vertical Depth (ft)	+N/-S (ft)	+E/-W (ft)	Vertical Section (ft)	Dogleg Rate (°/100ft)	Build Rate (°/100ft)	Comments / Formations
9,800.0	0.00	0.00	8,991.4	3,458.1	-1,194.9	3,658.7	0.00	0.00	
9,900.0	0.00	0.00	9,091.4	3,458.1	-1,194.9	3,658.7	0.00	0.00	
10,000.0	0.00	0.00	9,191.4	3,458.1	-1,194.9	3,658.7	0.00	0.00	
10,100.0	0.00	0.00	9,291.4	3,458.1	-1,194.9	3,658.7	0.00	0.00	
10,108.6	0.00	0.00	9,300.0	3,458.1	-1,194.9	3,658.7	0.00	0.00	Price_GR
10,200.0	0.00	0.00	9,391.4	3,458.1	-1,194.9	3,658.7	0.00	0.00	
10,300.0	0.00	0.00	9,491.4	3,458.1	-1,194.9	3,658.7	0.00	0.00	
10,400.0	0.00	0.00	9,591.4	3,458.1	-1,194.9	3,658.7	0.00	0.00	
10,500.0	0.00	0.00	9,691.4	3,458.1	-1,194.9	3,658.7	0.00	0.00	
10,600.0	0.00	0.00	9,791.4	3,458.1	-1,194.9	3,658.7	0.00	0.00	
10,700.0	0.00	0.00	9,891.4	3,458.1	-1,194.9	3,658.7	0.00	0.00	
10,800.0	0.00	0.00	9,991.4	3,458.1	-1,194.9	3,658.7	0.00	0.00	
10,900.0	0.00	0.00	10,091.4	3,458.1	-1,194.9	3,658.7	0.00	0.00	
11,000.0	0.00	0.00	10,191.4	3,458.1	-1,194.9	3,658.7	0.00	0.00	
11,100.0	0.00	0.00	10,291.4	3,458.1	-1,194.9	3,658.7	0.00	0.00	
11,200.0	0.00	0.00	10,391.4	3,458.1	-1,194.9	3,658.7	0.00	0.00	
11,300.0	0.00	0.00	10,491.4	3,458.1	-1,194.9	3,658.7	0.00	0.00	
11,400.0	0.00	0.00	10,591.4	3,458.1	-1,194.9	3,658.7	0.00	0.00	
11,500.0	0.00	0.00	10,691.4	3,458.1	-1,194.9	3,658.7	0.00	0.00	
11,600.0	0.00	0.00	10,791.4	3,458.1	-1,194.9	3,658.7	0.00	0.00	
11,700.0	0.00	0.00	10,891.4	3,458.1	-1,194.9	3,658.7	0.00	0.00	
11,800.0	0.00	0.00	10,991.4	3,458.1	-1,194.9	3,658.7	0.00	0.00	
11,900.0	0.00	0.00	11,091.4	3,458.1	-1,194.9	3,658.7	0.00	0.00	
12,000.0	0.00	0.00	11,191.4	3,458.1	-1,194.9	3,658.7	0.00	0.00	
12,100.0	0.00	0.00	11,291.4	3,458.1	-1,194.9	3,658.7	0.00	0.00	
12,200.0	0.00	0.00	11,391.4	3,458.1	-1,194.9	3,658.7	0.00	0.00	
12,300.0	0.00	0.00	11,491.4	3,458.1	-1,194.9	3,658.7	0.00	0.00	
12,400.0	0.00	0.00	11,591.4	3,458.1	-1,194.9	3,658.7	0.00	0.00	
12,500.0	0.00	0.00	11,691.4	3,458.1	-1,194.9	3,658.7	0.00	0.00	
12,508.6	0.00	0.00	11,700.0	3,458.1	-1,194.9	3,658.7	0.00	0.00	Paludal
12,600.0	0.00	0.00	11,791.4	3,458.1	-1,194.9	3,658.7	0.00	0.00	
12,700.0	0.00	0.00	11,891.4	3,458.1	-1,194.9	3,658.7	0.00	0.00	
12,800.0	0.00	0.00	11,991.4	3,458.1	-1,194.9	3,658.7	0.00	0.00	
12,900.0	0.00	0.00	12,091.4	3,458.1	-1,194.9	3,658.7	0.00	0.00	
13,000.0	0.00	0.00	12,191.4	3,458.1	-1,194.9	3,658.7	0.00	0.00	
13,100.0	0.00	0.00	12,291.4	3,458.1	-1,194.9	3,658.7	0.00	0.00	
13,108.6	0.00	0.00	12,300.0	3,458.1	-1,194.9	3,658.7	0.00	0.00	Rollins - 8513A-24 F25 BHL
13,200.0	0.00	0.00	12,391.4	3,458.1	-1,194.9	3,658.7	0.00	0.00	
13,300.0	0.00	0.00	12,491.4	3,458.1	-1,194.9	3,658.7	0.00	0.00	
13,400.0	0.00	0.00	12,591.4	3,458.1	-1,194.9	3,658.7	0.00	0.00	
13,438.6	0.00	0.00	12,630.0	3,458.1	-1,194.9	3,658.7	0.00	0.00	Cozzette
13,500.0	0.00	0.00	12,691.4	3,458.1	-1,194.9	3,658.7	0.00	0.00	
13,600.0	0.00	0.00	12,791.4	3,458.1	-1,194.9	3,658.7	0.00	0.00	
13,628.6	0.00	0.00	12,820.0	3,458.1	-1,194.9	3,658.7	0.00	0.00	Corcoran
13,700.0	0.00	0.00	12,891.4	3,458.1	-1,194.9	3,658.7	0.00	0.00	
13,800.0	0.00	0.00	12,991.4	3,458.1	-1,194.9	3,658.7	0.00	0.00	
13,900.0	0.00	0.00	13,091.4	3,458.1	-1,194.9	3,658.7	0.00	0.00	
13,908.6	0.00	0.00	13,100.0	3,458.1	-1,194.9	3,658.7	0.00	0.00	Sego
14,000.0	0.00	0.00	13,191.4	3,458.1	-1,194.9	3,658.7	0.00	0.00	
14,100.0	0.00	0.00	13,291.4	3,458.1	-1,194.9	3,658.7	0.00	0.00	
14,108.6	0.00	0.00	13,300.0	3,458.1	-1,194.9	3,658.7	0.00	0.00	L Sego
14,200.0	0.00	0.00	13,391.4	3,458.1	-1,194.9	3,658.7	0.00	0.00	

Planning Report

Database:	US EDM 2003.21 Multi User Db	Local Co-ordinate Reference:	Well 8513A-24 F25 496
Company:	EnCana Oil & Gas (USA) Inc	TVD Reference:	KBE @ 8320.0ft (Original Well Elev)
Project:	Story Gulch	MD Reference:	KBE @ 8320.0ft (Original Well Elev)
Site:	F25 496	North Reference:	True
Well:	8513A-24 F25 496	Survey Calculation Method:	Minimum Curvature
Wellbore:	DD		
Design:	Plan #1		

Planned Survey									
Measured Depth (ft)	Inclination (°)	Azimuth (°)	Vertical Depth (ft)	+N/-S (ft)	+E/-W (ft)	Vertical Section (ft)	Dogleg Rate (°/100ft)	Build Rate (°/100ft)	Comments / Formations
14,300.0	0.00	0.00	13,491.4	3,458.1	-1,194.9	3,658.7	0.00	0.00	
14,358.6	0.00	0.00	13,550.0	3,458.1	-1,194.9	3,658.7	0.00	0.00	TD at 14,358.6' MD
14,400.0	0.00	0.00	13,591.4	3,458.1	-1,194.9	3,658.7	0.00	0.00	
14,500.0	0.00	0.00	13,691.4	3,458.1	-1,194.9	3,658.7	0.00	0.00	
14,600.0	0.00	0.00	13,791.4	3,458.1	-1,194.9	3,658.7	0.00	0.00	
14,608.6	0.00	0.00	13,800.0	3,458.1	-1,194.9	3,658.7	0.00	0.00	Permit TD at 14,608.6' MD

Targets											
Target Name	- hit/miss target	- Shape	Dip Angle (°)	Dip Dir. (°)	TVD (ft)	+N/-S (ft)	+E/-W (ft)	Northing (ft)	Easting (ft)	Latitude	Longitude
8513A-24 F25 TGT			0.00	0.00	8,640.0	3,458.1	-1,194.9	1,684,615.17	2,261,592.75	39° 41' 1.62 N	108° 7' 26.35 W
- plan hits target center											
- Point											
8513A-24 F25 BHL			0.00	0.00	12,300.0	3,458.1	-1,194.9	1,684,615.17	2,261,592.75	39° 41' 1.62 N	108° 7' 26.35 W
- plan hits target center											
- Rectangle (sides W30.0 H50.0 D0.0)											

Formations						
Measured Depth (ft)	Vertical Depth (ft)	Name	Lithology	Dip (°)	Dip Direction (°)	
2,025.0	1,900.0	Mahog Bench		0.00		
6,024.0	5,500.0	Was G		0.00		
9,408.6	8,600.0	Williams fork		0.00		
9,448.6	8,640.0	Top of Gas		0.00		
10,108.6	9,300.0	Price _GR		0.00		
12,508.6	11,700.0	Paludal		0.00		
13,108.6	12,300.0	Rollins		0.00		
13,438.6	12,630.0	Cozzette		0.00		
13,628.6	12,820.0	Corcoran		0.00		
13,908.6	13,100.0	Sego		0.00		
14,108.6	13,300.0	L Sego		0.00		

Plan Annotations					
Measured Depth (ft)	Vertical Depth (ft)	Local Coordinates		Comment	
		+N/-S (ft)	+E/-W (ft)		
200.0	200.0	0.0	0.0	KOP = 200' MD	
1,060.4	1,031.5	180.1	-62.2	EOB at Inc. = 25.81°	
8,588.3	7,808.5	3,278.0	-1,132.7	Start Drop -3.00	
9,448.6	8,640.0	3,458.1	-1,194.9	EOD at Inc. = 0°	
14,358.6	13,550.0	3,458.1	-1,194.9	TD at 14,358.6' MD	
14,608.6	13,800.0	3,458.1	-1,194.9	Permit TD at 14,608.6' MD	