



**EnCana OIL & GAS (USA) INC.**

Well location, STORY GULCH UNIT #8513A-24 F25 496, (TARGET BOTTOM HOLE) located as shown in the SW 1/4 SW 1/4 of Section 24, T4S, R96W, 6th P.M., Garfield County, Colorado.

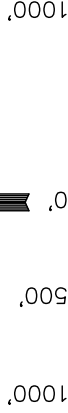
**BASIS OF ELEVATION**

BENCH MARK (H79) LOCATED IN THE NE 1/4 OF SECTION 25, T4S, R98W, 6th P.M. TAKEN FROM THE BULL FORK QUADRANGLE, COLORADO, 7.5 MINUTE SERIES (TOPO GRAPHICAL MAP) PUBLISHED BY THE UNITED STATES DEPARTMENT OF THE INTERIOR, GEOLOGICAL SURVEY. SAID ELEVATION IS MARKED AS BEING 8535 FEET.

**BASIS OF BEARINGS**

BASIS OF BEARINGS IS A G.P.S. OBSERVATION.

Sheet 10 of 11



S C A L E  
C E R T I F I C A T E

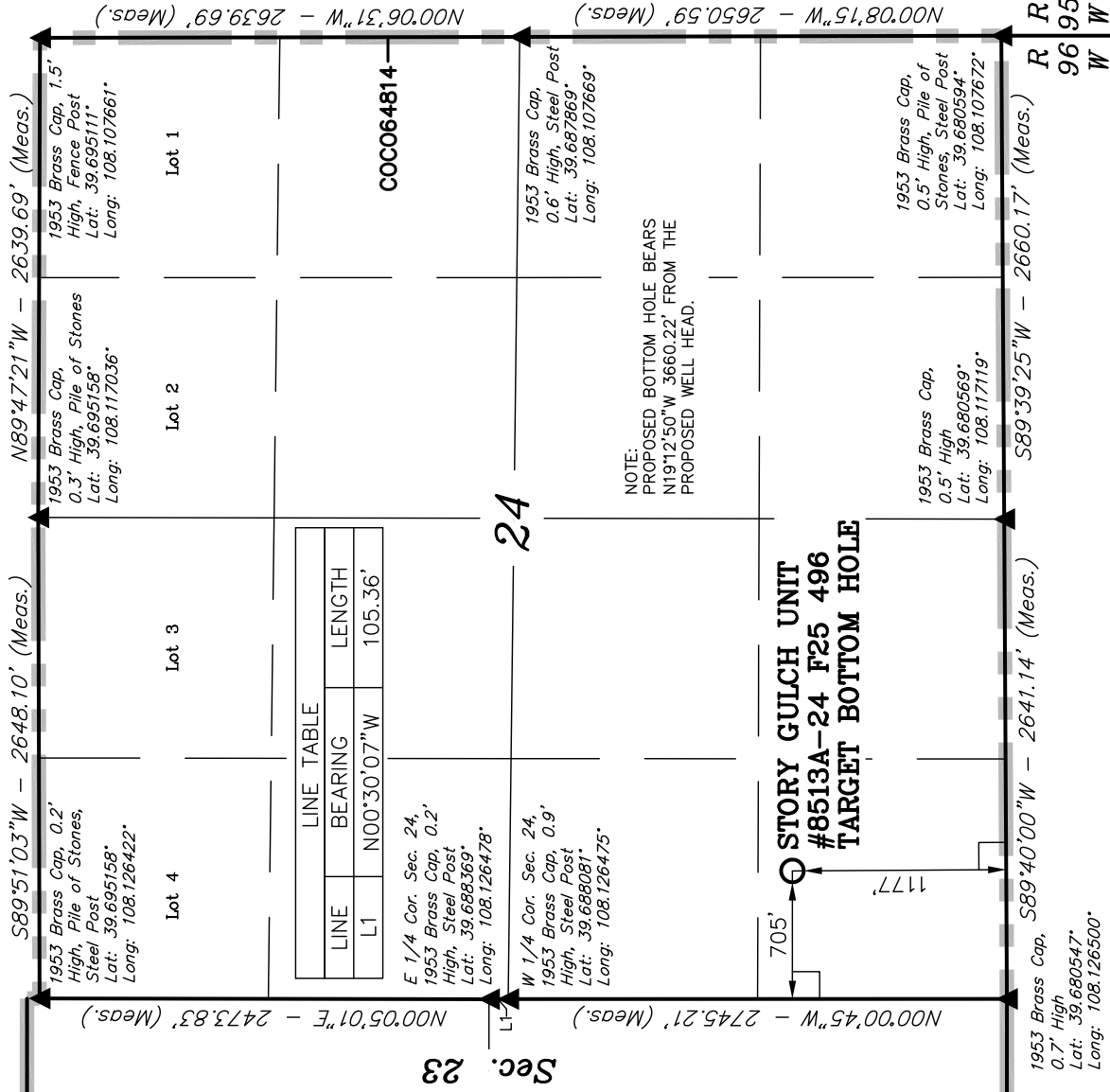
THIS IS TO CERTIFY THAT THE ABOVE PLAT WAS PREPARED FROM FIELD NOTES OF ACTUAL SURVEYS MADE BY ME OR UNDER MY SUPERVISION AND THAT THE SAME ARE TRUE AND CORRECT TO THE BEST OF MY KNOWLEDGE AND BELIEF.

REGISTERED LAND SURVEYOR  
REGISTRATION NO. 17492  
STATE OF COLORADO

**UINTAH ENGINEERING & LAND SURVEYING**  
85 SOUTH 200 EAST - VERNAL, UTAH 84078  
(435) 789-1017

SCALE	1" = 1000'	DATE SURVEYED:	08-07-09	DATE DRAWN:	08-27-09
PARTY	D.K. J.R. K.G.	REFERENCES	G.L.O. PLAT		
WEATHER	WARM	FILE	EnCana OIL & GAS (USA) INC.		

**T4S, R96W, 6th P.M.**



- LEGEND:**
- = 90° SYMBOL
  - = PROPOSED WELL HEAD.
  - ▲ = SECTION CORNERS LOCATED.

NAD 83 (TARGET BOTTOM HOLE)	LATITUDE = 39°41'01.62" (39.683783)
	LONGITUDE = 108°07'26.35" (108.123986)
NAD 27 (TARGET BOTTOM HOLE)	LATITUDE = 39°41'01.71" (39.683808)
	LONGITUDE = 108°07'24.06" (108.123350)