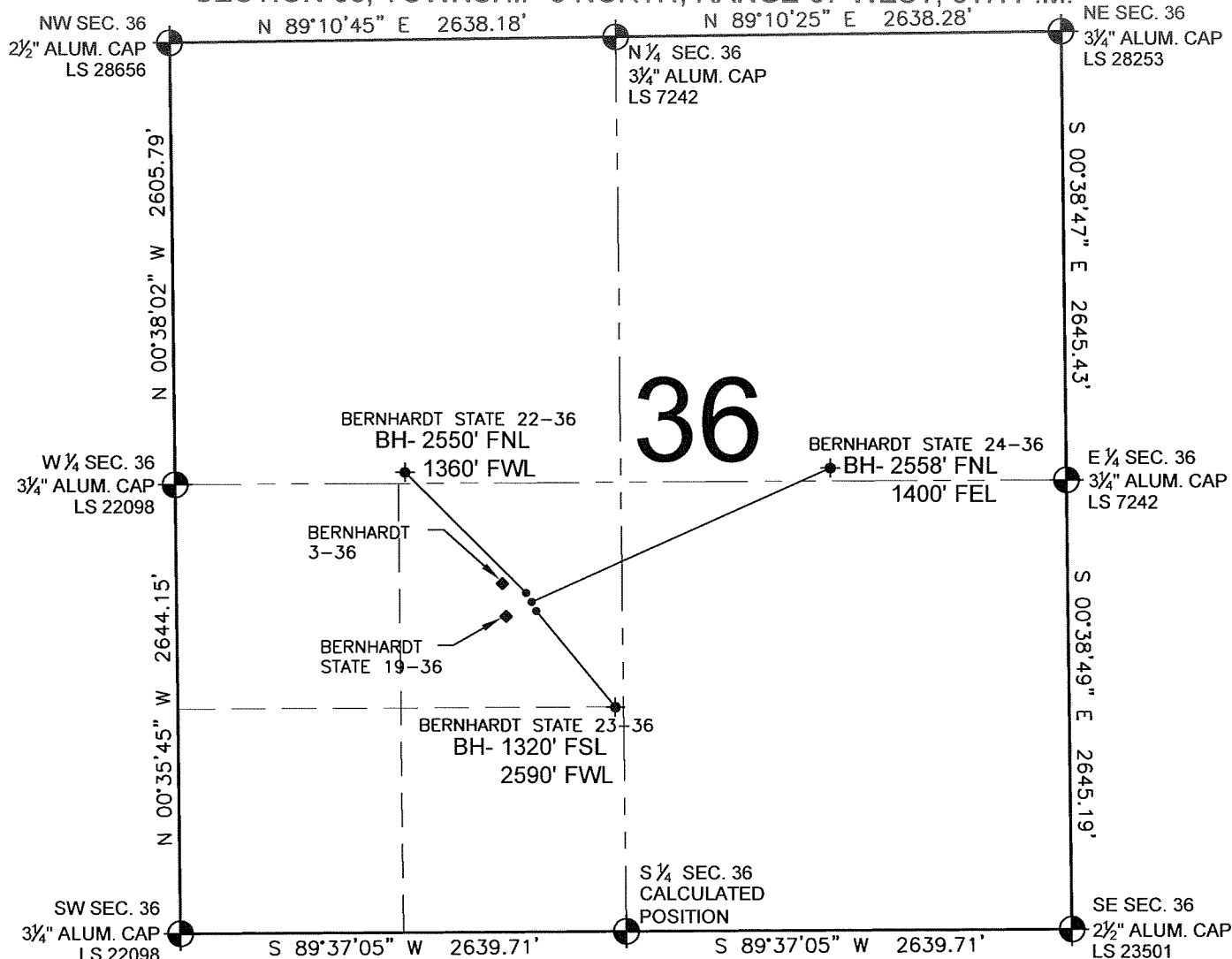


PAD DRAWING - BERNHARDT STATE 3 PAD

SECTION 36, TOWNSHIP 5 NORTH, RANGE 67 WEST, 6TH P.M.



LEGEND

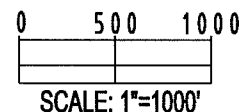
- = EXISTING MONUMENT
 = BOTTOM HOLE
 BH= BOTTOM HOLE
 = PROPOSED WELL
 = EXISTING WELL

NOTES:

- THIS SURVEY WAS DONE BY GPS METHODS AND CONFORMS TO THE MINIMUM STANDARDS SET BY THE C.O.G.C.C., RULE NO. 215
- ELEVATIONS SHOWN AT THE WELL HEAD, AS WELL AS HORIZONTAL CONTROL, ARE BASED ON GPS-RTK VALUES DERIVED FROM DOING 2-HOUR STATIC GPS SESSIONS AND REDUCTIONS USING O.P.U.S. SOLUTIONS.
VERTICAL = NAVD88; HORIZONTAL = NAD83/92
- THE BEARINGS SHOWN HEREON ARE BASED ON GPS OBSERVATIONS BETWEEN THE MONUMENTS SHOWN HEREON AS FOUND ON THE FIELD DATE BELOW.
- DISTANCES SHOWN ARE AT GROUND LEVEL, AS MEASURED IN THE FIELD, WITH TIES TO WELLS MEASURED AT A PERPENDICULAR TO SECTION LINES.

NOTES:

BERNHARDT STATE 22-36 TO BE AT 1995' FSL, 2068' FWL.
 BOTTOM HOLE AT 2550' FNL & 1360' FWL.
 BERNHARDT STATE 24-36 TO BE AT 1966' FSL, 2074' FWL.
 BOTTOM HOLE AT 2558' FSL & 1400' FEL.
 BERNHARDT STATE 23-36 TO BE AT 1936' FSL, 2080' FWL.
 BOTTOM HOLE AT 1320' FSL & 2590' FWL.
 BERNHARDT STATE 19-36 IS 1926' FSL, 2031' FWL.
 BERNHARDT 3-36 IS 2003' FSL, 2015' FWL.



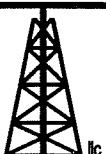
REVISIONS

INITIAL	DATE
SMF	09-22-09

PREPARED BY:

PFS

Petroleum Field Services, LLC
1801 W. 13th Ave.
Denver, CO 80204



KERR-MCGEE OIL & GAS ONSHORE LP

FIELD DATE:
08-26-09

DRAWING DATE:
08-31-09

BY:
SMF

WELL NAME:
BERNHARDT STATE 3 PAD

SURFACE LOCATION:

WELD COUNTY, COLORADO
NE 1/4 SW 1/4, SEC. 36, T5N, R67W