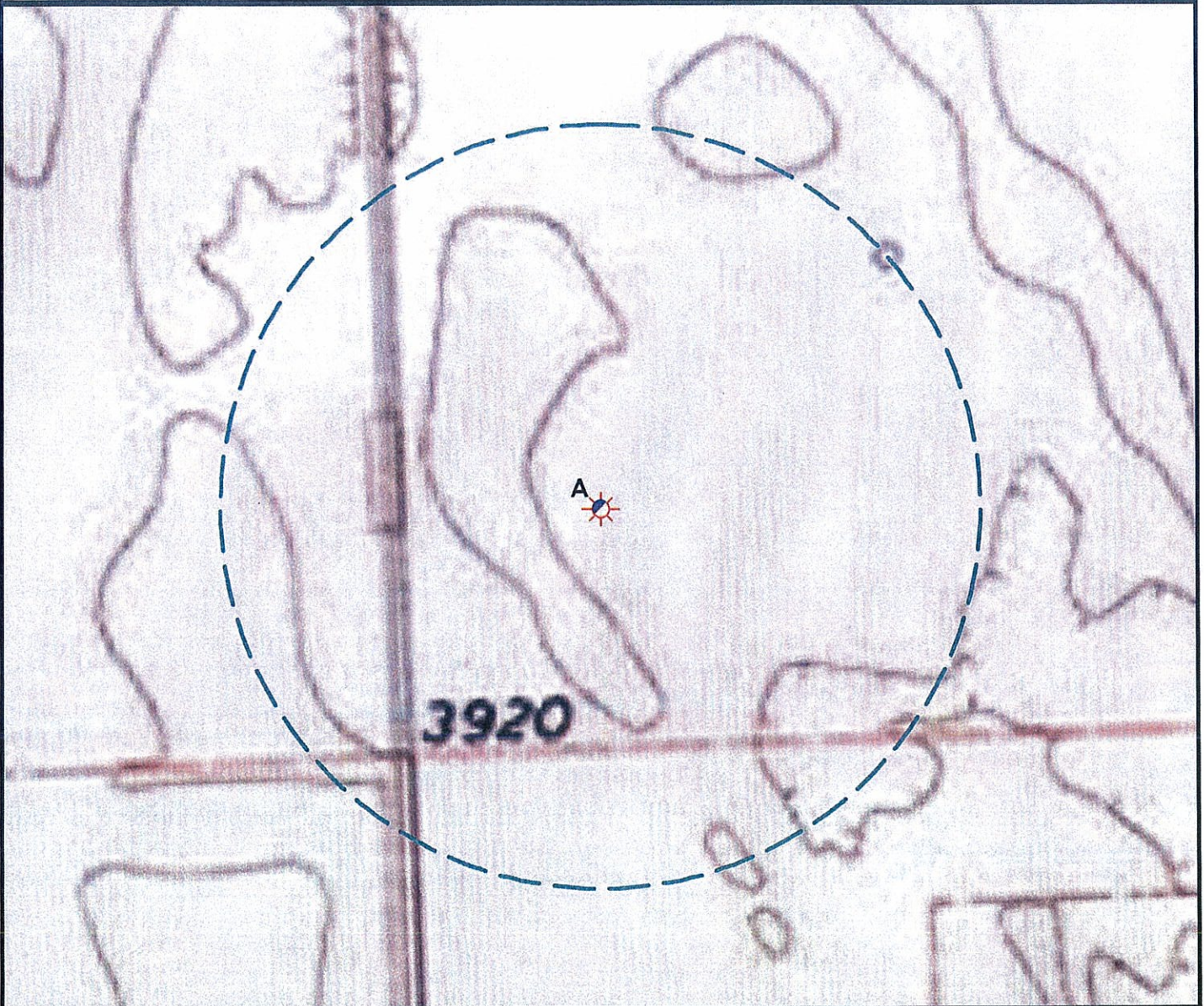


Hydrology Map



A. Proposed well CHAPMAN 27-05.

There are no surface waters within a 1000' radius of the Oil & Gas location.



Legend

- | | |
|----------------------|---------------------|
| Proposed Well | Building/Residence |
| Existing Well | Oil & Gas Equipment |
| Water Well | Water Body |
| Pedestal | Utility Box |
| CattleGuard/Gate | Railroad |
| Bridge | Sewer |
| ECD | Fence |
| 1000' Radius | Overhead Power Line |
| Facilities Enclosure | Pipeline |
| | Access Road |
| | Ditch/Canal |

Hydrology Map

Chapman 27-05

Surface Location: T1S R45W S27

Field Date: 10/12/2009
 Drawing Date: 12/03/2009
 Drafter: BHF
 Checked By: MPS

Prepared for:
 ROSETTA RESOURCES
 OPERATING LP
 717 Texas Avenue, Ste. 2800
 Houston, TX 77002



Use our resources to find yours!
www.petro-fs.com

1801 W. 13th Ave Denver, CO 80204 (303) 928-7128	111 E. Third Street Suite 207 Rifle, CO 81650 (970) 625-4740
--	---