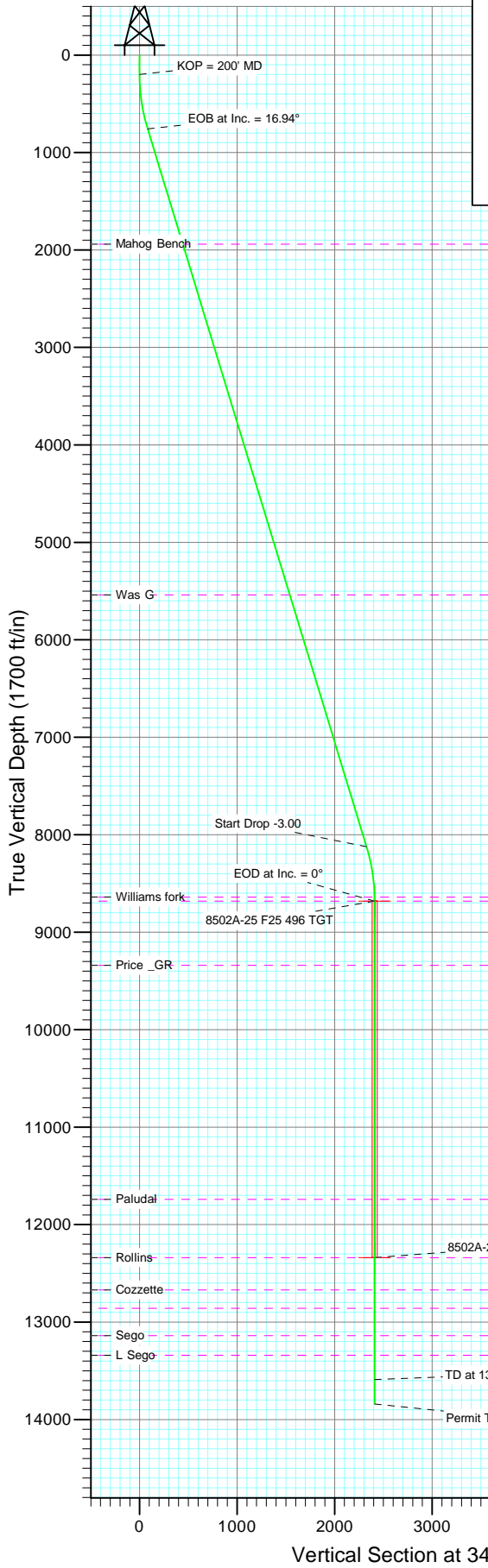
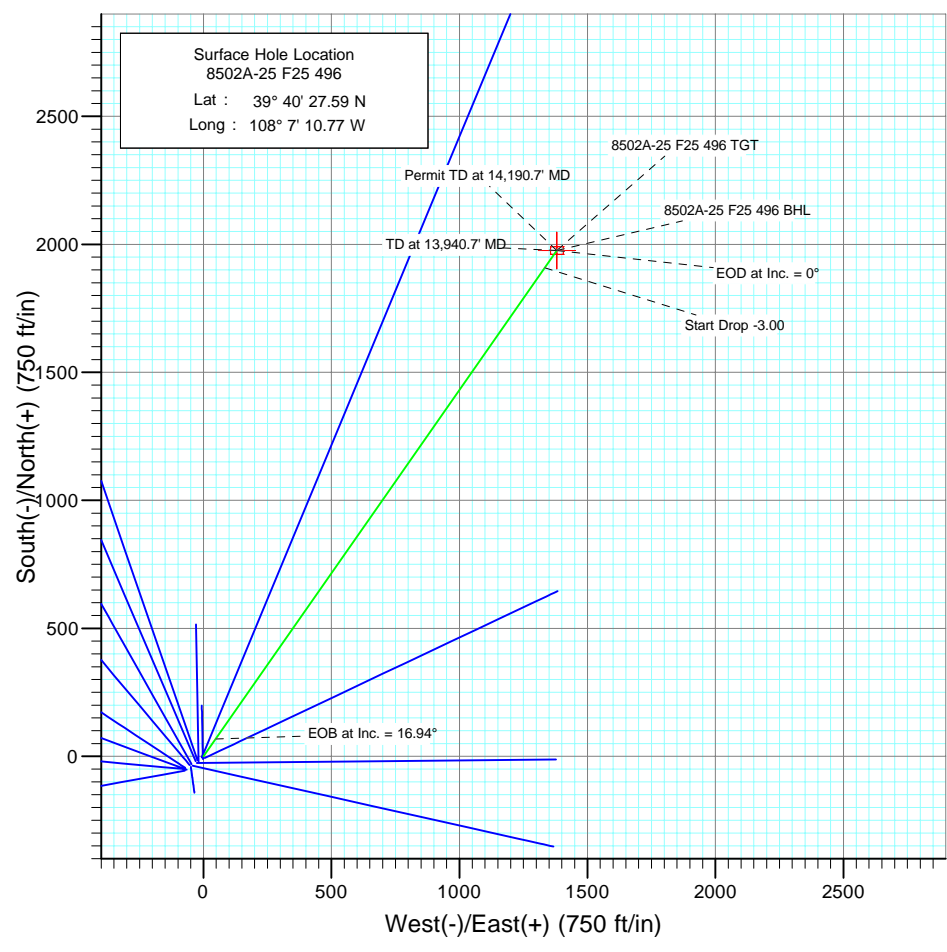




Project: Story Gulch
 Site: F25 496
 Well: 8502A-25 F25 496
 Wellbore: DD
 Design: Plan #1



SECTION DETAILS										
Sec	MD	Inc	Azi	TVD	+N/-S	+E/-W	DLeg	TFace	VSec	Target
1	0.0	0.00	0.00	0.0	0.0	0.0	0.00	0.00	0.0	
2	200.0	0.00	0.00	200.0	0.0	0.0	0.00	0.00	0.0	
3	764.8	16.94	34.94	756.6	68.0	47.5	3.00	34.94	82.9	
4	8465.9	16.94	34.94	8123.4	1907.8	1332.9	0.00	0.00	2327.3	8502A-25 F25 496 TGT
5	9030.7	0.00	0.00	8680.0	1975.8	1380.4	3.00	180.00	2410.2	8502A-25 F25 496 BHL
6	12690.7	0.00	0.00	12340.0	1975.8	1380.4	0.00	0.00	2410.2	
7	13940.7	0.00	0.00	13590.0	1975.8	1380.4	0.00	0.00	2410.2	
8	14190.7	0.00	0.00	13840.0	1975.8	1380.4	0.00	0.00	2410.2	



T M

Azimuths to True North
 Magnetic North: 10.64°

Magnetic Field
 Strength: 52519.4snT
 Dip Angle: 65.92°
 Date: 9/1/2009
 Model: IGRF200510

FORMATION TOP DETAILS			
TVDPath	MDPath	Formation	
1940.0	2001.9	Mahog Bench	
5540.0	5765.3	Was G	
8640.0	8990.7	Williams fork	
8680.0	9030.7	Top of Gas	
9340.0	9690.7	Price _GR	
11740.0	12090.7	Paludal	
12340.0	12690.7	Rollins	
12670.0	13020.7	Cozzette	
12860.0	13210.7	Corcoran	
13140.0	13490.7	Sego	
13340.0	13690.7	L Segor	

DESIGN DETAILS: Plan #1
 Job #95xxx: KR
 KBE @ 8320.0ft (Original Well Elev)

Target	Azimuth	Origin	N/S	E/W	From TVD
8502A-25 F25 496 BHL	34.94	Slot	0.0	0.0	0.0

Planning Report

Database:	US EDM 2003.21 Multi User Db	Local Co-ordinate Reference:	Well 8502A-25 F25 496
Company:	EnCana Oil & Gas (USA) Inc	TVD Reference:	KBE @ 8320.0ft (Original Well Elev)
Project:	Story Gulch	MD Reference:	KBE @ 8320.0ft (Original Well Elev)
Site:	F25 496	North Reference:	True
Well:	8502A-25 F25 496	Survey Calculation Method:	Minimum Curvature
Wellbore:	DD		
Design:	Plan #1		

Project	Story Gulch		
Map System:	US State Plane 1983	System Datum:	Mean Sea Level
Geo Datum:	North American Datum 1983		
Map Zone:	Colorado Central Zone		

Site	F25 496				
Site Position:		Northing:	1,681,091.06 ft	Latitude:	39° 40' 27.10 N
From:	Lat/Long	Easting:	2,262,632.54 ft	Longitude:	108° 7' 11.76 W
Position Uncertainty:	0.0 ft	Slot Radius:	in	Grid Convergence:	-1.65 °

Well	8502A-25 F25 496					
Well Position	+N/-S	0.0 ft	Northing:	1,681,138.52 ft	Latitude:	39° 40' 27.59 N
	+E/-W	0.0 ft	Easting:	2,262,711.40 ft	Longitude:	108° 7' 10.77 W
Position Uncertainty		0.0 ft	Wellhead Elevation:	ft	Ground Level:	8,298.0 ft

Wellbore	DD				
Magnetics	Model Name	Sample Date	Declination	Dip Angle	Field Strength
	IGRF200510	9/1/2009	(°)	(°)	(nT)
			10.64	65.92	52,519

Design	Plan #1			
Audit Notes:				
Version:	Phase:	PLAN	Tie On Depth:	0.0
Vertical Section:	Depth From (TVD)	+N/-S	+E/-W	Direction
	(ft)	(ft)	(ft)	(°)
	0.0	0.0	0.0	34.94

Plan Sections										
Measured Depth (ft)	Inclination (°)	Azimuth (°)	Vertical Depth (ft)	+N/-S (ft)	+E/-W (ft)	Dogleg Rate (°/100ft)	Build Rate (°/100ft)	Turn Rate (°/100ft)	TFO (°)	Target
0.0	0.00	0.00	0.0	0.0	0.0	0.00	0.00	0.00	0.00	
200.0	0.00	0.00	200.0	0.0	0.0	0.00	0.00	0.00	0.00	
764.8	16.94	34.94	756.6	68.0	47.5	3.00	3.00	0.00	34.94	
8,465.9	16.94	34.94	8,123.4	1,907.8	1,332.9	0.00	0.00	0.00	0.00	
9,030.7	0.00	0.00	8,680.0	1,975.8	1,380.4	3.00	-3.00	0.00	180.00	8502A-25 F25 496 TC
12,690.7	0.00	0.00	12,340.0	1,975.8	1,380.4	0.00	0.00	0.00	0.00	8502A-25 F25 496 Bf
13,940.7	0.00	0.00	13,590.0	1,975.8	1,380.4	0.00	0.00	0.00	0.00	
14,190.7	0.00	0.00	13,840.0	1,975.8	1,380.4	0.00	0.00	0.00	0.00	

Planning Report

Database:	US EDM 2003.21 Multi User Db	Local Co-ordinate Reference:	Well 8502A-25 F25 496
Company:	EnCana Oil & Gas (USA) Inc	TVD Reference:	KBE @ 8320.0ft (Original Well Elev)
Project:	Story Gulch	MD Reference:	KBE @ 8320.0ft (Original Well Elev)
Site:	F25 496	North Reference:	True
Well:	8502A-25 F25 496	Survey Calculation Method:	Minimum Curvature
Wellbore:	DD		
Design:	Plan #1		

Planned Survey									
Measured Depth (ft)	Inclination (°)	Azimuth (°)	Vertical Depth (ft)	+N/-S (ft)	+E/-W (ft)	Vertical Section (ft)	Dogleg Rate (°/100ft)	Build Rate (°/100ft)	Comments / Formations
0.0	0.00	0.00	0.0	0.0	0.0	0.0	0.00	0.00	
100.0	0.00	0.00	100.0	0.0	0.0	0.0	0.00	0.00	
200.0	0.00	0.00	200.0	0.0	0.0	0.0	0.00	0.00	KOP = 200' MD
300.0	3.00	34.94	300.0	2.1	1.5	2.6	3.00	3.00	
400.0	6.00	34.94	399.6	8.6	6.0	10.5	3.00	3.00	
500.0	9.00	34.94	498.8	19.3	13.5	23.5	3.00	3.00	
600.0	12.00	34.94	597.1	34.2	23.9	41.7	3.00	3.00	
700.0	15.00	34.94	694.3	53.3	37.3	65.1	3.00	3.00	
764.8	16.94	34.94	756.6	68.0	47.5	82.9	3.00	3.00	EOB at Inc. = 16.94°
800.0	16.94	34.94	790.3	76.4	53.4	93.2	0.00	0.00	
900.0	16.94	34.94	885.9	100.3	70.0	122.3	0.00	0.00	
1,000.0	16.94	34.94	981.6	124.2	86.7	151.5	0.00	0.00	
1,100.0	16.94	34.94	1,077.3	148.0	103.4	180.6	0.00	0.00	
1,200.0	16.94	34.94	1,172.9	171.9	120.1	209.7	0.00	0.00	
1,300.0	16.94	34.94	1,268.6	195.8	136.8	238.9	0.00	0.00	
1,400.0	16.94	34.94	1,364.2	219.7	153.5	268.0	0.00	0.00	
1,500.0	16.94	34.94	1,459.9	243.6	170.2	297.2	0.00	0.00	
1,600.0	16.94	34.94	1,555.5	267.5	186.9	326.3	0.00	0.00	
1,700.0	16.94	34.94	1,651.2	291.4	203.6	355.5	0.00	0.00	
1,800.0	16.94	34.94	1,746.9	315.3	220.3	384.6	0.00	0.00	
1,900.0	16.94	34.94	1,842.5	339.2	237.0	413.7	0.00	0.00	
2,000.0	16.94	34.94	1,938.2	363.1	253.6	442.9	0.00	0.00	
2,001.9	16.94	34.94	1,940.0	363.5	254.0	443.4	0.00	0.00	Mahog Bench
2,100.0	16.94	34.94	2,033.8	387.0	270.3	472.0	0.00	0.00	
2,200.0	16.94	34.94	2,129.5	410.8	287.0	501.2	0.00	0.00	
2,300.0	16.94	34.94	2,225.2	434.7	303.7	530.3	0.00	0.00	
2,400.0	16.94	34.94	2,320.8	458.6	320.4	559.5	0.00	0.00	
2,500.0	16.94	34.94	2,416.5	482.5	337.1	588.6	0.00	0.00	
2,600.0	16.94	34.94	2,512.1	506.4	353.8	617.8	0.00	0.00	
2,700.0	16.94	34.94	2,607.8	530.3	370.5	646.9	0.00	0.00	
2,800.0	16.94	34.94	2,703.5	554.2	387.2	676.0	0.00	0.00	
2,900.0	16.94	34.94	2,799.1	578.1	403.9	705.2	0.00	0.00	
3,000.0	16.94	34.94	2,894.8	602.0	420.6	734.3	0.00	0.00	
3,100.0	16.94	34.94	2,990.4	625.9	437.3	763.5	0.00	0.00	
3,200.0	16.94	34.94	3,086.1	649.8	453.9	792.6	0.00	0.00	
3,300.0	16.94	34.94	3,181.7	673.6	470.6	821.8	0.00	0.00	
3,400.0	16.94	34.94	3,277.4	697.5	487.3	850.9	0.00	0.00	
3,500.0	16.94	34.94	3,373.1	721.4	504.0	880.0	0.00	0.00	
3,600.0	16.94	34.94	3,468.7	745.3	520.7	909.2	0.00	0.00	
3,700.0	16.94	34.94	3,564.4	769.2	537.4	938.3	0.00	0.00	
3,800.0	16.94	34.94	3,660.0	793.1	554.1	967.5	0.00	0.00	
3,900.0	16.94	34.94	3,755.7	817.0	570.8	996.6	0.00	0.00	
4,000.0	16.94	34.94	3,851.4	840.9	587.5	1,025.8	0.00	0.00	
4,100.0	16.94	34.94	3,947.0	864.8	604.2	1,054.9	0.00	0.00	
4,200.0	16.94	34.94	4,042.7	888.7	620.9	1,084.1	0.00	0.00	
4,300.0	16.94	34.94	4,138.3	912.6	637.5	1,113.2	0.00	0.00	
4,400.0	16.94	34.94	4,234.0	936.4	654.2	1,142.3	0.00	0.00	
4,500.0	16.94	34.94	4,329.7	960.3	670.9	1,171.5	0.00	0.00	
4,600.0	16.94	34.94	4,425.3	984.2	687.6	1,200.6	0.00	0.00	
4,700.0	16.94	34.94	4,521.0	1,008.1	704.3	1,229.8	0.00	0.00	
4,800.0	16.94	34.94	4,616.6	1,032.0	721.0	1,258.9	0.00	0.00	
4,900.0	16.94	34.94	4,712.3	1,055.9	737.7	1,288.1	0.00	0.00	

Planning Report

Database:	US EDM 2003.21 Multi User Db	Local Co-ordinate Reference:	Well 8502A-25 F25 496
Company:	EnCana Oil & Gas (USA) Inc	TVD Reference:	KBE @ 8320.0ft (Original Well Elev)
Project:	Story Gulch	MD Reference:	KBE @ 8320.0ft (Original Well Elev)
Site:	F25 496	North Reference:	True
Well:	8502A-25 F25 496	Survey Calculation Method:	Minimum Curvature
Wellbore:	DD		
Design:	Plan #1		

Planned Survey									
Measured Depth (ft)	Inclination (°)	Azimuth (°)	Vertical Depth (ft)	+N/-S (ft)	+E/-W (ft)	Vertical Section (ft)	Dogleg Rate (°/100ft)	Build Rate (°/100ft)	Comments / Formations
5,000.0	16.94	34.94	4,808.0	1,079.8	754.4	1,317.2	0.00	0.00	
5,100.0	16.94	34.94	4,903.6	1,103.7	771.1	1,346.4	0.00	0.00	
5,200.0	16.94	34.94	4,999.3	1,127.6	787.8	1,375.5	0.00	0.00	
5,300.0	16.94	34.94	5,094.9	1,151.5	804.5	1,404.6	0.00	0.00	
5,400.0	16.94	34.94	5,190.6	1,175.4	821.1	1,433.8	0.00	0.00	
5,500.0	16.94	34.94	5,286.2	1,199.2	837.8	1,462.9	0.00	0.00	
5,600.0	16.94	34.94	5,381.9	1,223.1	854.5	1,492.1	0.00	0.00	
5,700.0	16.94	34.94	5,477.6	1,247.0	871.2	1,521.2	0.00	0.00	
5,765.3	16.94	34.94	5,540.0	1,262.6	882.1	1,540.2	0.00	0.00	Was G
5,800.0	16.94	34.94	5,573.2	1,270.9	887.9	1,550.4	0.00	0.00	
5,900.0	16.94	34.94	5,668.9	1,294.8	904.6	1,579.5	0.00	0.00	
6,000.0	16.94	34.94	5,764.5	1,318.7	921.3	1,608.6	0.00	0.00	
6,100.0	16.94	34.94	5,860.2	1,342.6	938.0	1,637.8	0.00	0.00	
6,200.0	16.94	34.94	5,955.9	1,366.5	954.7	1,666.9	0.00	0.00	
6,300.0	16.94	34.94	6,051.5	1,390.4	971.4	1,696.1	0.00	0.00	
6,400.0	16.94	34.94	6,147.2	1,414.3	988.1	1,725.2	0.00	0.00	
6,500.0	16.94	34.94	6,242.8	1,438.2	1,004.7	1,754.4	0.00	0.00	
6,600.0	16.94	34.94	6,338.5	1,462.0	1,021.4	1,783.5	0.00	0.00	
6,700.0	16.94	34.94	6,434.2	1,485.9	1,038.1	1,812.7	0.00	0.00	
6,800.0	16.94	34.94	6,529.8	1,509.8	1,054.8	1,841.8	0.00	0.00	
6,900.0	16.94	34.94	6,625.5	1,533.7	1,071.5	1,870.9	0.00	0.00	
7,000.0	16.94	34.94	6,721.1	1,557.6	1,088.2	1,900.1	0.00	0.00	
7,100.0	16.94	34.94	6,816.8	1,581.5	1,104.9	1,929.2	0.00	0.00	
7,200.0	16.94	34.94	6,912.4	1,605.4	1,121.6	1,958.4	0.00	0.00	
7,300.0	16.94	34.94	7,008.1	1,629.3	1,138.3	1,987.5	0.00	0.00	
7,400.0	16.94	34.94	7,103.8	1,653.2	1,155.0	2,016.7	0.00	0.00	
7,500.0	16.94	34.94	7,199.4	1,677.1	1,171.7	2,045.8	0.00	0.00	
7,600.0	16.94	34.94	7,295.1	1,701.0	1,188.3	2,074.9	0.00	0.00	
7,700.0	16.94	34.94	7,390.7	1,724.8	1,205.0	2,104.1	0.00	0.00	
7,800.0	16.94	34.94	7,486.4	1,748.7	1,221.7	2,133.2	0.00	0.00	
7,900.0	16.94	34.94	7,582.1	1,772.6	1,238.4	2,162.4	0.00	0.00	
8,000.0	16.94	34.94	7,677.7	1,796.5	1,255.1	2,191.5	0.00	0.00	
8,100.0	16.94	34.94	7,773.4	1,820.4	1,271.8	2,220.7	0.00	0.00	
8,200.0	16.94	34.94	7,869.0	1,844.3	1,288.5	2,249.8	0.00	0.00	
8,300.0	16.94	34.94	7,964.7	1,868.2	1,305.2	2,279.0	0.00	0.00	
8,400.0	16.94	34.94	8,060.4	1,892.1	1,321.9	2,308.1	0.00	0.00	
8,465.9	16.94	34.94	8,123.4	1,907.8	1,332.9	2,327.3	0.00	0.00	Start Drop -3.00
8,500.0	15.92	34.94	8,156.1	1,915.7	1,338.4	2,337.0	3.00	-3.00	
8,600.0	12.92	34.94	8,252.9	1,936.1	1,352.7	2,361.9	3.00	-3.00	
8,700.0	9.92	34.94	8,350.9	1,952.4	1,364.0	2,381.7	3.00	-3.00	
8,800.0	6.92	34.94	8,449.9	1,964.4	1,372.4	2,396.3	3.00	-3.00	
8,900.0	3.92	34.94	8,549.4	1,972.1	1,377.8	2,405.7	3.00	-3.00	
8,990.7	1.20	34.94	8,640.0	1,975.4	1,380.1	2,409.8	3.00	-3.00	Williams fork
9,000.0	0.92	34.94	8,649.3	1,975.6	1,380.2	2,410.0	3.00	-3.00	
9,030.7	0.00	0.00	8,680.0	1,975.8	1,380.4	2,410.2	3.00	-3.00	EOD at Inc. = 0° - Top of Gas - 8502A-25 F25 4
9,100.0	0.00	0.00	8,749.3	1,975.8	1,380.4	2,410.2	0.00	0.00	
9,200.0	0.00	0.00	8,849.3	1,975.8	1,380.4	2,410.2	0.00	0.00	
9,300.0	0.00	0.00	8,949.3	1,975.8	1,380.4	2,410.2	0.00	0.00	
9,400.0	0.00	0.00	9,049.3	1,975.8	1,380.4	2,410.2	0.00	0.00	
9,500.0	0.00	0.00	9,149.3	1,975.8	1,380.4	2,410.2	0.00	0.00	
9,600.0	0.00	0.00	9,249.3	1,975.8	1,380.4	2,410.2	0.00	0.00	
9,690.7	0.00	0.00	9,340.0	1,975.8	1,380.4	2,410.2	0.00	0.00	Price_GR

Planning Report

Database:	US EDM 2003.21 Multi User Db	Local Co-ordinate Reference:	Well 8502A-25 F25 496
Company:	EnCana Oil & Gas (USA) Inc	TVD Reference:	KBE @ 8320.0ft (Original Well Elev)
Project:	Story Gulch	MD Reference:	KBE @ 8320.0ft (Original Well Elev)
Site:	F25 496	North Reference:	True
Well:	8502A-25 F25 496	Survey Calculation Method:	Minimum Curvature
Wellbore:	DD		
Design:	Plan #1		

Planned Survey									
Measured Depth (ft)	Inclination (°)	Azimuth (°)	Vertical Depth (ft)	+N/-S (ft)	+E/-W (ft)	Vertical Section (ft)	Dogleg Rate (°/100ft)	Build Rate (°/100ft)	Comments / Formations
9,700.0	0.00	0.00	9,349.3	1,975.8	1,380.4	2,410.2	0.00	0.00	
9,800.0	0.00	0.00	9,449.3	1,975.8	1,380.4	2,410.2	0.00	0.00	
9,900.0	0.00	0.00	9,549.3	1,975.8	1,380.4	2,410.2	0.00	0.00	
10,000.0	0.00	0.00	9,649.3	1,975.8	1,380.4	2,410.2	0.00	0.00	
10,100.0	0.00	0.00	9,749.3	1,975.8	1,380.4	2,410.2	0.00	0.00	
10,200.0	0.00	0.00	9,849.3	1,975.8	1,380.4	2,410.2	0.00	0.00	
10,300.0	0.00	0.00	9,949.3	1,975.8	1,380.4	2,410.2	0.00	0.00	
10,400.0	0.00	0.00	10,049.3	1,975.8	1,380.4	2,410.2	0.00	0.00	
10,500.0	0.00	0.00	10,149.3	1,975.8	1,380.4	2,410.2	0.00	0.00	
10,600.0	0.00	0.00	10,249.3	1,975.8	1,380.4	2,410.2	0.00	0.00	
10,700.0	0.00	0.00	10,349.3	1,975.8	1,380.4	2,410.2	0.00	0.00	
10,800.0	0.00	0.00	10,449.3	1,975.8	1,380.4	2,410.2	0.00	0.00	
10,900.0	0.00	0.00	10,549.3	1,975.8	1,380.4	2,410.2	0.00	0.00	
11,000.0	0.00	0.00	10,649.3	1,975.8	1,380.4	2,410.2	0.00	0.00	
11,100.0	0.00	0.00	10,749.3	1,975.8	1,380.4	2,410.2	0.00	0.00	
11,200.0	0.00	0.00	10,849.3	1,975.8	1,380.4	2,410.2	0.00	0.00	
11,300.0	0.00	0.00	10,949.3	1,975.8	1,380.4	2,410.2	0.00	0.00	
11,400.0	0.00	0.00	11,049.3	1,975.8	1,380.4	2,410.2	0.00	0.00	
11,500.0	0.00	0.00	11,149.3	1,975.8	1,380.4	2,410.2	0.00	0.00	
11,600.0	0.00	0.00	11,249.3	1,975.8	1,380.4	2,410.2	0.00	0.00	
11,700.0	0.00	0.00	11,349.3	1,975.8	1,380.4	2,410.2	0.00	0.00	
11,800.0	0.00	0.00	11,449.3	1,975.8	1,380.4	2,410.2	0.00	0.00	
11,900.0	0.00	0.00	11,549.3	1,975.8	1,380.4	2,410.2	0.00	0.00	
12,000.0	0.00	0.00	11,649.3	1,975.8	1,380.4	2,410.2	0.00	0.00	
12,090.7	0.00	0.00	11,740.0	1,975.8	1,380.4	2,410.2	0.00	0.00	Paludal
12,100.0	0.00	0.00	11,749.3	1,975.8	1,380.4	2,410.2	0.00	0.00	
12,200.0	0.00	0.00	11,849.3	1,975.8	1,380.4	2,410.2	0.00	0.00	
12,300.0	0.00	0.00	11,949.3	1,975.8	1,380.4	2,410.2	0.00	0.00	
12,400.0	0.00	0.00	12,049.3	1,975.8	1,380.4	2,410.2	0.00	0.00	
12,500.0	0.00	0.00	12,149.3	1,975.8	1,380.4	2,410.2	0.00	0.00	
12,600.0	0.00	0.00	12,249.3	1,975.8	1,380.4	2,410.2	0.00	0.00	
12,690.7	0.00	0.00	12,340.0	1,975.8	1,380.4	2,410.2	0.00	0.00	Rollins - 8502A-25 F25 496 BHL
12,700.0	0.00	0.00	12,349.3	1,975.8	1,380.4	2,410.2	0.00	0.00	
12,800.0	0.00	0.00	12,449.3	1,975.8	1,380.4	2,410.2	0.00	0.00	
12,900.0	0.00	0.00	12,549.3	1,975.8	1,380.4	2,410.2	0.00	0.00	
13,000.0	0.00	0.00	12,649.3	1,975.8	1,380.4	2,410.2	0.00	0.00	
13,020.7	0.00	0.00	12,670.0	1,975.8	1,380.4	2,410.2	0.00	0.00	Cozzette
13,100.0	0.00	0.00	12,749.3	1,975.8	1,380.4	2,410.2	0.00	0.00	
13,200.0	0.00	0.00	12,849.3	1,975.8	1,380.4	2,410.2	0.00	0.00	
13,210.7	0.00	0.00	12,860.0	1,975.8	1,380.4	2,410.2	0.00	0.00	Corcoran
13,300.0	0.00	0.00	12,949.3	1,975.8	1,380.4	2,410.2	0.00	0.00	
13,400.0	0.00	0.00	13,049.3	1,975.8	1,380.4	2,410.2	0.00	0.00	
13,490.7	0.00	0.00	13,140.0	1,975.8	1,380.4	2,410.2	0.00	0.00	Sego
13,500.0	0.00	0.00	13,149.3	1,975.8	1,380.4	2,410.2	0.00	0.00	
13,600.0	0.00	0.00	13,249.3	1,975.8	1,380.4	2,410.2	0.00	0.00	
13,690.7	0.00	0.00	13,340.0	1,975.8	1,380.4	2,410.2	0.00	0.00	L Sego
13,700.0	0.00	0.00	13,349.3	1,975.8	1,380.4	2,410.2	0.00	0.00	
13,800.0	0.00	0.00	13,449.3	1,975.8	1,380.4	2,410.2	0.00	0.00	
13,900.0	0.00	0.00	13,549.3	1,975.8	1,380.4	2,410.2	0.00	0.00	
13,940.7	0.00	0.00	13,590.0	1,975.8	1,380.4	2,410.2	0.00	0.00	TD at 13,940.7' MD
14,000.0	0.00	0.00	13,649.3	1,975.8	1,380.4	2,410.2	0.00	0.00	
14,100.0	0.00	0.00	13,749.3	1,975.8	1,380.4	2,410.2	0.00	0.00	

Planning Report

Database:	US EDM 2003.21 Multi User Db	Local Co-ordinate Reference:	Well 8502A-25 F25 496
Company:	EnCana Oil & Gas (USA) Inc	TVD Reference:	KBE @ 8320.0ft (Original Well Elev)
Project:	Story Gulch	MD Reference:	KBE @ 8320.0ft (Original Well Elev)
Site:	F25 496	North Reference:	True
Well:	8502A-25 F25 496	Survey Calculation Method:	Minimum Curvature
Wellbore:	DD		
Design:	Plan #1		

Planned Survey									
Measured Depth (ft)	Inclination (°)	Azimuth (°)	Vertical Depth (ft)	+N/-S (ft)	+E/-W (ft)	Vertical Section (ft)	Dogleg Rate (°/100ft)	Build Rate (°/100ft)	Comments / Formations
14,190.7	0.00	0.00	13,840.0	1,975.8	1,380.4	2,410.2	0.00	0.00	Permit TD at 14,190.7' MD

Targets									
Target Name - hit/miss target - Shape	Dip Angle (°)	Dip Dir. (°)	TVD (ft)	+N/-S (ft)	+E/-W (ft)	Northing (ft)	Easting (ft)	Latitude	Longitude
8502A-25 F25 496 BHL - plan hits target center - Rectangle (sides W30.0 H50.0 D0.0)	0.00	0.00	12,340.0	1,975.8	1,380.4	1,683,073.69	2,264,148.15	39° 40' 47.12 N	108° 6' 53.11 W
8502A-25 F25 496 TGT - plan hits target center - Point	0.00	0.00	8,680.0	1,975.8	1,380.4	1,683,073.69	2,264,148.15	39° 40' 47.12 N	108° 6' 53.11 W

Formations					
Measured Depth (ft)	Vertical Depth (ft)	Name	Lithology	Dip (°)	Dip Direction (°)
2,001.9	1,940.0	Mahog Bench		0.00	
5,765.3	5,540.0	Was G		0.00	
8,990.7	8,640.0	Williams fork		0.00	
9,030.7	8,680.0	Top of Gas		0.00	
9,690.7	9,340.0	Price _GR		0.00	
12,090.7	11,740.0	Paludal		0.00	
12,690.7	12,340.0	Rollins		0.00	
13,020.7	12,670.0	Cozzette		0.00	
13,210.7	12,860.0	Corcoran		0.00	
13,490.7	13,140.0	Sego		0.00	
13,690.7	13,340.0	L Sego		0.00	

Plan Annotations				
Measured Depth (ft)	Vertical Depth (ft)	+N/-S (ft)	+E/-W (ft)	Comment
200.0	200.0	0.0	0.0	KOP = 200' MD
764.8	756.6	68.0	47.5	EOB at Inc. = 16.94°
8,465.9	8,123.4	1,907.8	1,332.9	Start Drop -3.00
9,030.7	8,680.0	1,975.8	1,380.4	EOD at Inc. = 0°
13,940.7	13,590.0	1,975.8	1,380.4	TD at 13,940.7' MD
14,190.7	13,840.0	1,975.8	1,380.4	Permit TD at 14,190.7' MD