

EnCana Oil & Gas (USA) INC.

Well location, STORY GULCH UNIT #8502A-25 F25 496, located as shown in the SE 1/4 NW 1/4 of Section 25, T4S, R96W, 6th P.M., Garfield County, Colorado.

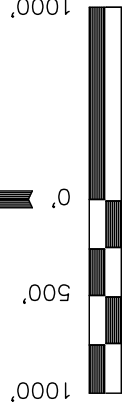
BASIS OF ELEVATION

BENCH MARK (H79) LOCATED IN THE NE 1/4 OF SECTION 25, T4S, R98W, 6th P.M. TAKEN FROM THE BULL FORK QUADRANGLE, COLORADO, 7.5 MINUTE SERIES (TOPOGRAPHICAL MAP) PUBLISHED BY THE UNITED STATES DEPARTMENT OF THE INTERIOR, GEOLOGICAL SURVEY. SAID ELEVATION IS MARKED AS BEING 8535 FEET.

BASIS OF BEARINGS

BASIS OF BEARINGS IS A G.P.S. OBSERVATION.

Sheet 1a of 11



S C A L E

CERTIFICATE

THIS IS TO CERTIFY THAT THE ABOVE PLAT WAS PREPARED FROM FIELD NOTES OF ACTUAL SURVEYS MADE BY ME OR UNDER MY SUPERVISION AND THAT THE SAME ARE TRUE AND CORRECT TO THE BEST OF MY KNOWLEDGE AND BELIEF.

Robert J. R. R.
 REGISTERED LAND SURVEYOR
 REGISTRATION NO. 17492
 STATE OF COLORADO

UINTAH ENGINEERING & LAND SURVEYING

85 SOUTH 200 EAST - VERNAL, UTAH 84078
 (435) 789-1017

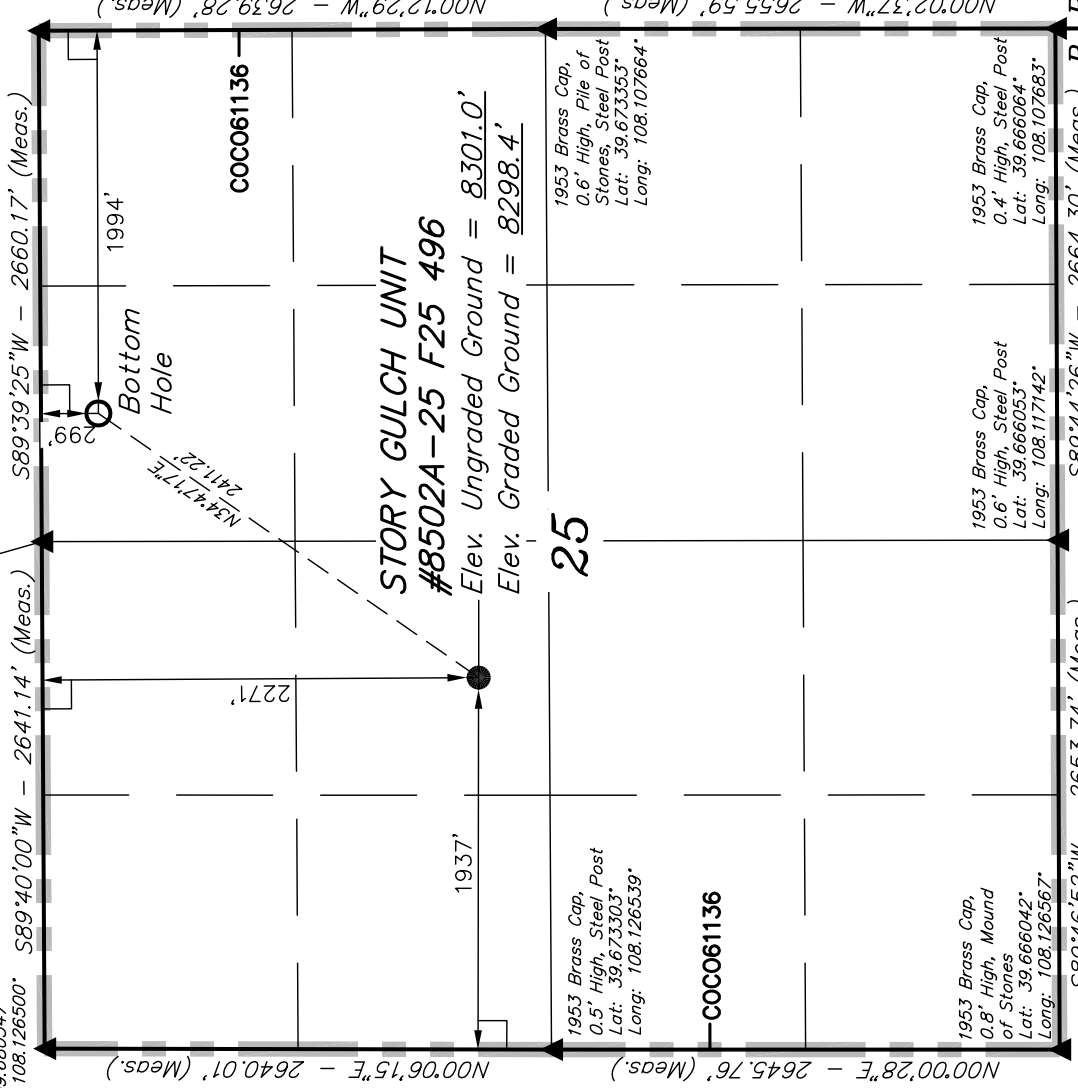
SCALE	1" = 1000'	DATE SURVEYED:	08-07-09	DATE DRAWN:	08-27-09
PARTY	D.K. J.R. K.G.	REFERENCES	G.L.O. PLAT		
WEATHER	WARM	FILE	EnCana Oil & Gas (USA) INC.		

T4S, R96W, 6th P.M.

1953 Brass Cap,
 0.5' High, Pile of
 Stones, Steel Post
 Lat: 39.680594°
 Long: 108.107672°

1953 Brass Cap,
 0.5' High
 Lat: 39.680569°
 Long: 108.117119°

1953 Brass Cap,
 0.7' High
 Lat: 39.680547°
 Long: 108.126500°



NOTE:
 SEE ADDENDUM TO LEGAL PLAT FOR
 EXISTING IMPROVEMENTS WITHIN 400'
 OF THE PROPOSED WELL HEAD.

LEGEND:

—	90° SYMBOL
●	PROPOSED WELL HEAD.
▲	SECTION CORNERS LOCATED

NAD 83 (TARGET BOTTOM HOLE)	
LATITUDE = 39°40'47.12" (39.679756)	LATITUDE = 39°40'27.59" (39.674331)
LONGITUDE = 108°06'53.11" (108.114753)	LONGITUDE = 108°07'10.77" (108.119658)
NAD 27 (TARGET BOTTOM HOLE)	
LATITUDE = 39°40'47.21" (39.679781)	LATITUDE = 39°40'27.68" (39.674356)
LONGITUDE = 108°06'50.82" (108.114117)	LONGITUDE = 108°07'08.48" (108.119022)

PDOP = 1.7

R 96
 W 95