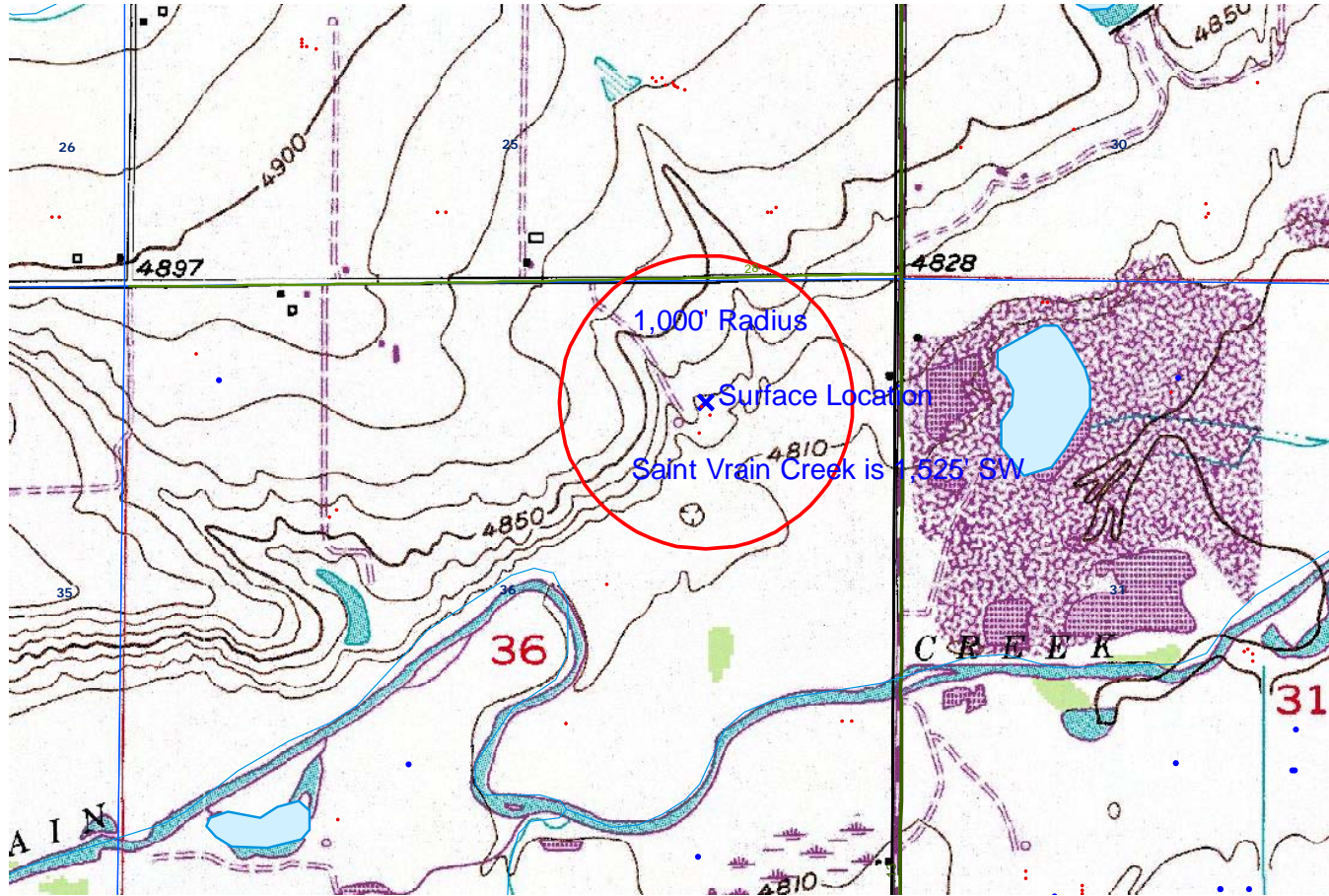


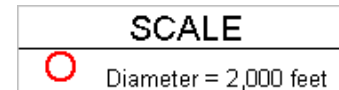
CARMA 8-36

TOPO

HYDROLOGY MAP-A



TOWNSHIP 3 NORTH, RANGE 68 WEST



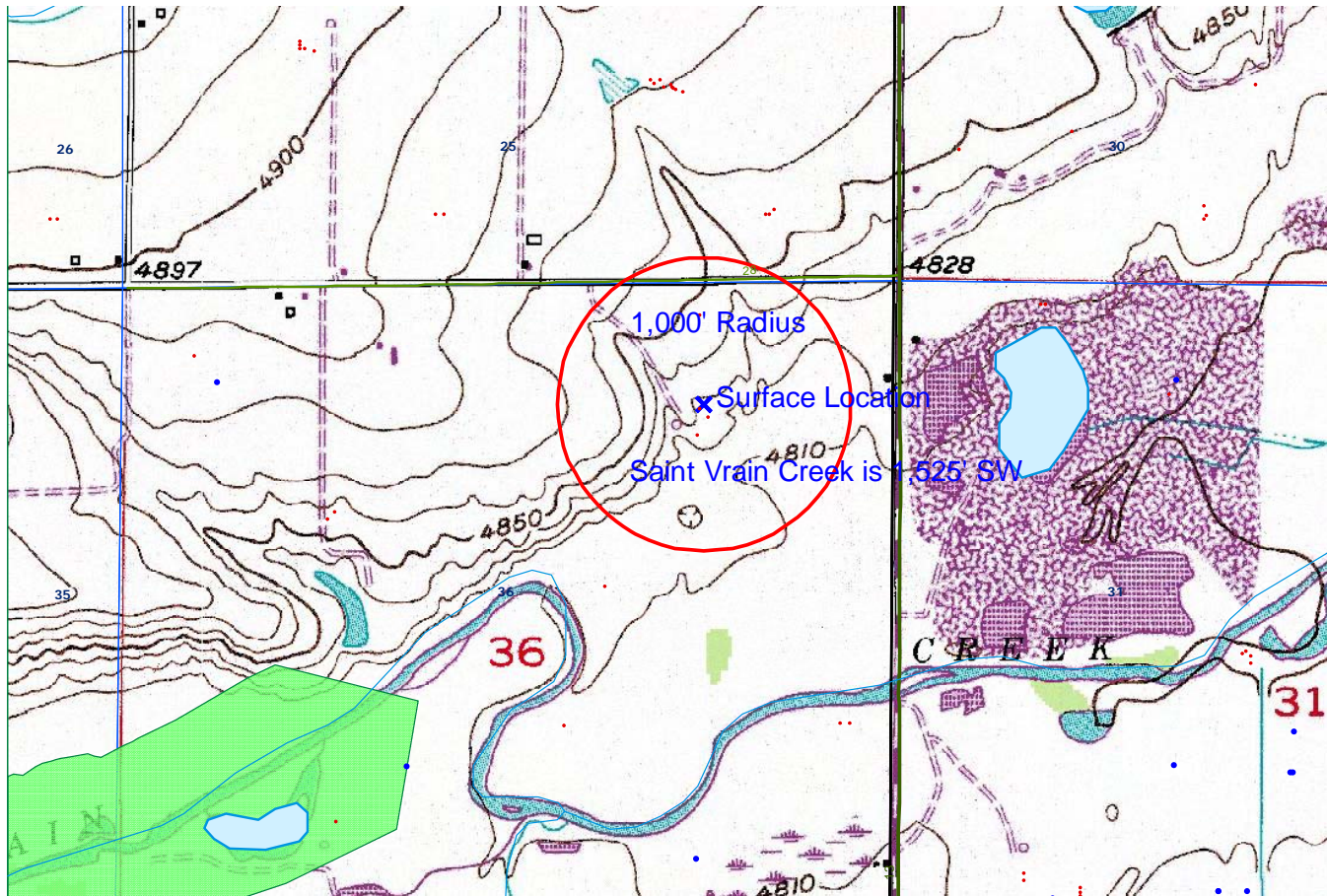
LEGEND A
WATER RESOURCES
● Water Wells
□ Lakes
— Major Rivers
— Streams
▨ 300-Foot Stream Buffers

LEGEND B
1200-SEARIES WILDLIFE AREAS
■ RSO Areas
■ RSO_Osprey_Curren
■ SWH Areas
▨ State Wildlife Areas

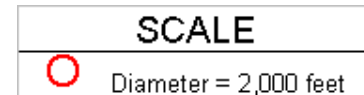
CARMA 8-36

TOPO

HYDROLOGY MAP-B



TOWNSHIP 3 NORTH, RANGE 68 WEST

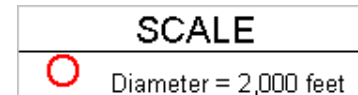


LEGEND A
WATER RESOURCES
Water Wells
Lakes
Major Rivers
Streams
300-Foot Stream Buffers

LEGEND B
1200-SEARIES WILDLIFE AREAS
RSO Areas
RSO_Osprey_Curren
SWH Areas
State Wildlife Areas



TOWNSHIP 3 NORTH, RANGE 68 WEST

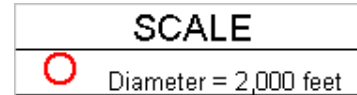





LEGEND A	
WATER RESOURCES	
	Water Wells
	Lakes
	Major Rivers
	Streams
	300-Foot Stream Buffers



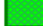

LEGEND B	
1200-SEARIES WILDLIFE AREAS	
	RSO Areas
	RSO_Osprey_Curren
	SWH Areas
	State Wildlife Areas



TOWNSHIP 3 NORTH, RANGE 68 WEST



LEGEND A
WATER RESOURCES
 Water Wells
 Lakes
 Major Rivers
 Streams
 300-Foot Stream Buffers

LEGEND B
1200-SEARIES WILDLIFE AREAS
 RSO Areas
 RSO_Osprey_Curren
 SWH Areas
 State Wildlife Areas