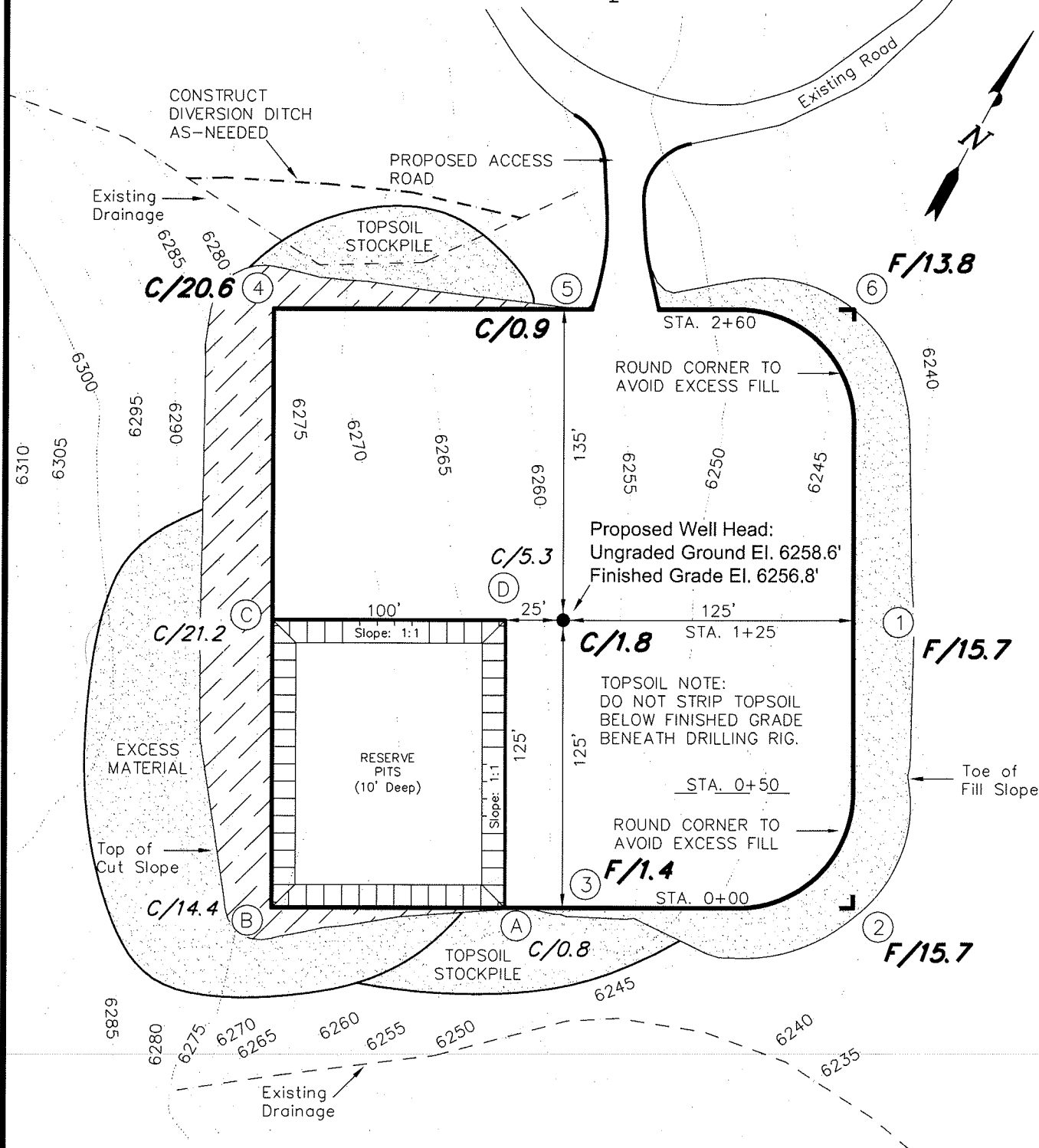


BLACK HILLS PLATEAU PRODUCTION

CUT SHEET - Homer Deep Unit 21-41

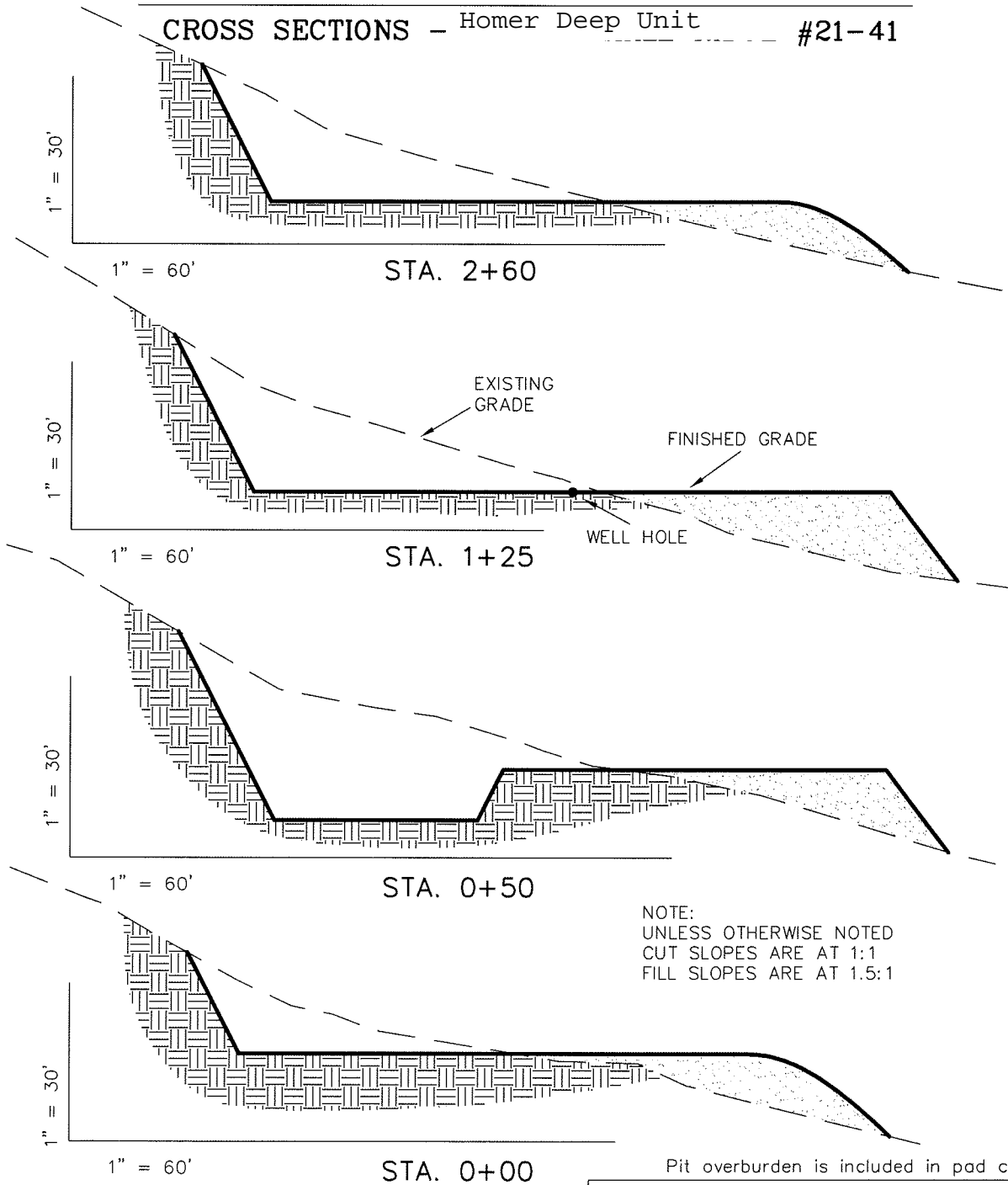


CONTOUR INTERVAL = 5'

Section 21, T8S, R98W, 6th P.M.		Qtr/Qtr Location: NE NE (Surface)	
Date Surveyed: 01-25-07	Date Drawn: 02-07-07	Date Last Revision: 06-20-07	Timberline (435) 789-1365
Surveyed By: B.J.S.	Drawn By: M.W.W.	Scale: 1" = 60'	Engineering & Land Surveying, Inc. 38 WEST 100 NORTH VERNAL, UTAH 84078
			SHEET 4 OF 11

BLACK HILLS PLATEAU PRODUCTION

CROSS SECTIONS - Homer Deep Unit #21-41



Pit overburden is included in pad cut.

ESTIMATED EARTHWORK QUANTITIES (No shrink or swell adjustments have been used) (Expressed in Cubic Yards)

ITEM	CUT	FILL	6" TOPSOIL	EXCESS
PAD	14,720	9,800	Topsoil is not included in Pad Cut	4,920
PIT	3,830	0		3,830
TOTALS	18,550	9,800	1,200	8,750

Excess Material after Pit Rehabilitation = 4,920 Cu. Yds.

REFERENCE POINTS

185' NORTHEASTERLY = 6237.7'
 225' NORTHEASTERLY = 6234.6'
 220' SOUTHEASTERLY = 6246.0'
 175' SOUTHEASTERLY = 6241.9'

Section 21, T8S, R98W, 6th P.M.

Qtr/Qtr Location: NE NE (Surface)

Date Surveyed:
01-25-07

Date Drawn:
02-07-07

Date Last Revision:
06-20-07

Surveyed By: B.J.S.

Drawn By: M.W.W.

Scale: 1" = 60'

Timberline

(435) 789-1365

Engineering & Land Surveying, Inc.

38 WEST 100 NORTH VERNAL, UTAH 84078

SHEET

5

OF 11