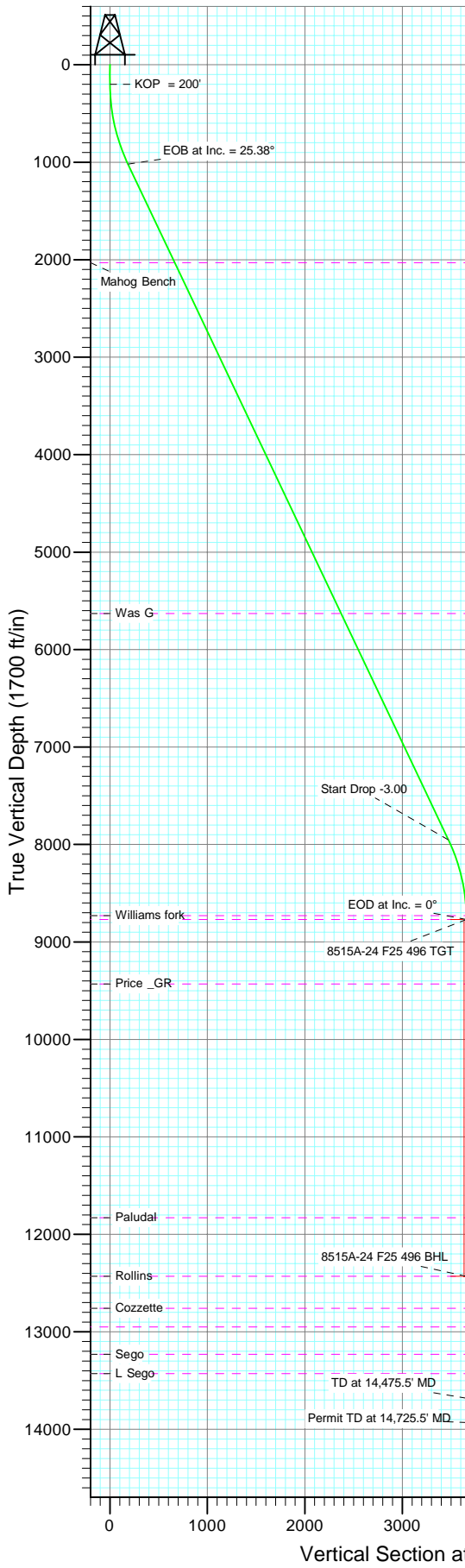
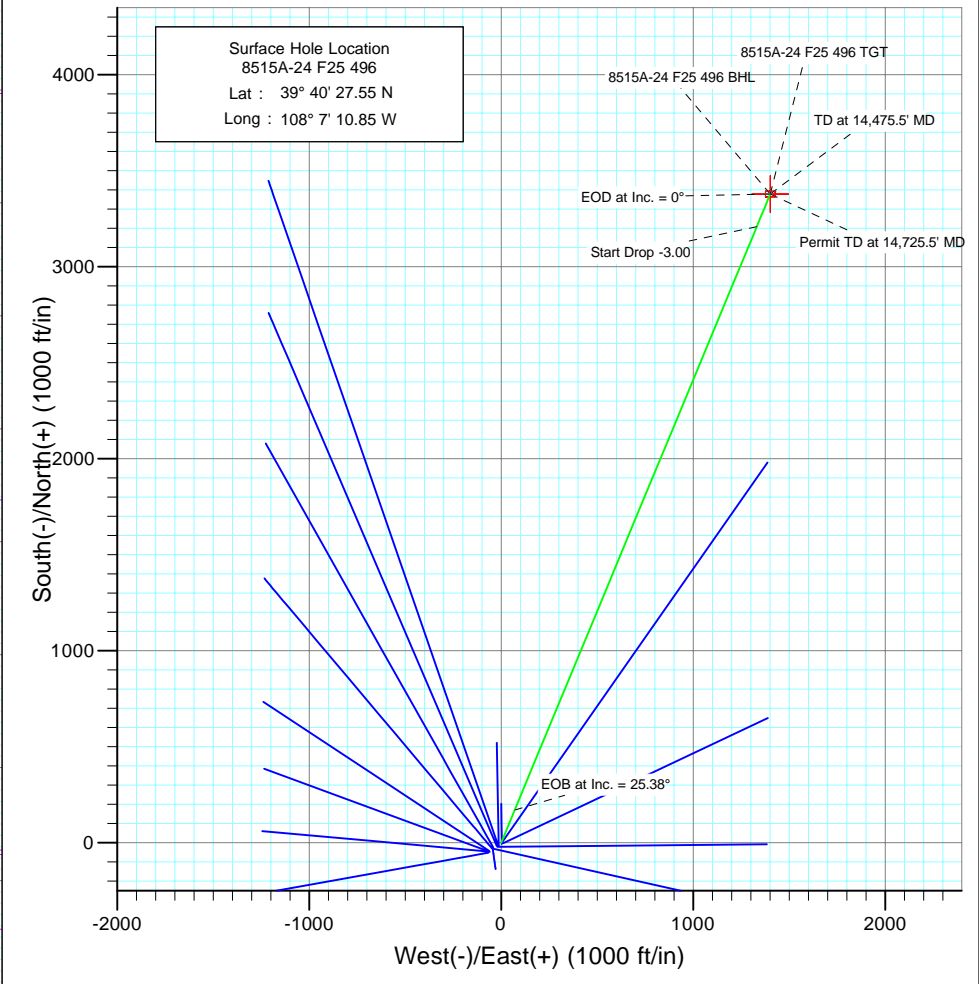




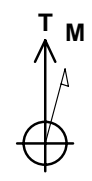
Project: Story Gulch
 Site: F25 496
 Well: 8515A-24 F25 496
 Wellbore: DD
 Design: Plan #1



SECTION DETAILS										
Sec	MD	Inc	Azi	TVD	+N/-S	+E/-W	DLeg	TFace	VSec	Target
1	0.0	0.00	0.00	0.0	0.0	0.0	0.00	0.00	0.0	
2	200.0	0.00	0.00	200.0	0.0	0.0	0.00	0.00	0.0	
3	1046.0	25.38	22.54	1018.6	170.3	70.7	3.00	22.54	184.4	
4	8719.4	25.38	22.54	7951.4	3208.3	1331.2	0.00	0.00	3473.5	
5	9565.5	0.00	0.00	8770.0	3378.5	1401.9	3.00	180.00	3657.8	8515A-24 F25 496 TGT
6	13225.5	0.00	0.00	12430.0	3378.5	1401.9	0.00	0.00	3657.8	8515A-24 F25 496 BHL
7	14475.5	0.00	0.00	13680.0	3378.5	1401.9	0.00	0.00	3657.8	
8	14725.5	0.00	0.00	13930.0	3378.5	1401.9	0.00	0.00	3657.8	



Bottom Hole Location
 8515A-24 F25 496
 Lat : 39° 41' 0.94 N
 Long. : 108° 6' 52.92 W



Azimuths to True North
 Magnetic North: 10.64°
 Magnetic Field
 Strength: 52519.1snT
 Dip Angle: 65.92°
 Date: 9/2/2009
 Model: IGRF200510

FORMATION TOP DETAILS

TVDPath	MDPath	Formation
2030.0	2165.5	Mahog Bench
5630.0	6150.1	Was G
8730.0	9525.5	Williams fork
8770.0	9565.5	Top of Gas
9430.0	10225.5	Price_GR
11830.0	12625.5	Paludal
12430.0	13225.5	Rollins
12760.0	13555.5	Cozzette
12950.0	13745.5	Corcoran
13230.0	14025.5	Sego
13430.0	14225.5	L Segó

DESIGN DETAILS: Plan #1

Job #95xxx: KR
 KBE @ 8320.0ft (Original Well Elev)

Target	Azimuth	Origin	N/S	E/W	From TVD
8515A-24 F25 496 BHL	22.54	Slot	0.0	0.0	0.0

Planning Report

Database:	US EDM 2003.21 Multi User Db	Local Co-ordinate Reference:	Well 8515A-24 F25 496
Company:	EnCana Oil & Gas (USA) Inc	TVD Reference:	KBE @ 8320.0ft (Original Well Elev)
Project:	Story Gulch	MD Reference:	KBE @ 8320.0ft (Original Well Elev)
Site:	F25 496	North Reference:	True
Well:	8515A-24 F25 496	Survey Calculation Method:	Minimum Curvature
Wellbore:	DD		
Design:	Plan #1		

Project	Story Gulch		
Map System:	US State Plane 1983	System Datum:	Mean Sea Level
Geo Datum:	North American Datum 1983		
Map Zone:	Colorado Central Zone		

Site	F25 496				
Site Position:		Northing:	1,681,091.06 ft	Latitude:	39° 40' 27.10 N
From:	Lat/Long	Easting:	2,262,632.54 ft	Longitude:	108° 7' 11.76 W
Position Uncertainty:	0.0 ft	Slot Radius:	in	Grid Convergence:	-1.65 °

Well	8515A-24 F25 496					
Well Position	+N/-S	0.0 ft	Northing:	1,681,134.33 ft	Latitude:	39° 40' 27.55 N
	+E/-W	0.0 ft	Easting:	2,262,704.53 ft	Longitude:	108° 7' 10.85 W
Position Uncertainty		0.0 ft	Wellhead Elevation:	ft	Ground Level:	8,298.0 ft

Wellbore	DD				
Magnetics	Model Name	Sample Date	Declination	Dip Angle	Field Strength
	IGRF200510	9/2/2009	(°)	(°)	(nT)
			10.64	65.92	52,519

Design	Plan #1			
Audit Notes:				
Version:	Phase:	PLAN	Tie On Depth:	0.0
Vertical Section:	Depth From (TVD)	+N/-S	+E/-W	Direction
	(ft)	(ft)	(ft)	(°)
	0.0	0.0	0.0	22.54

Plan Sections										
Measured Depth (ft)	Inclination (°)	Azimuth (°)	Vertical Depth (ft)	+N/-S (ft)	+E/-W (ft)	Dogleg Rate (°/100ft)	Build Rate (°/100ft)	Turn Rate (°/100ft)	TFO (°)	Target
0.0	0.00	0.00	0.0	0.0	0.0	0.00	0.00	0.00	0.00	
200.0	0.00	0.00	200.0	0.0	0.0	0.00	0.00	0.00	0.00	
1,046.0	25.38	22.54	1,018.6	170.3	70.7	3.00	3.00	0.00	22.54	
8,719.4	25.38	22.54	7,951.4	3,208.3	1,331.2	0.00	0.00	0.00	0.00	
9,565.5	0.00	0.00	8,770.0	3,378.5	1,401.9	3.00	-3.00	0.00	180.00	8515A-24 F25 496 TC
13,225.5	0.00	0.00	12,430.0	3,378.5	1,401.9	0.00	0.00	0.00	0.00	8515A-24 F25 496 Bf
14,475.5	0.00	0.00	13,680.0	3,378.5	1,401.9	0.00	0.00	0.00	0.00	
14,725.5	0.00	0.00	13,930.0	3,378.5	1,401.9	0.00	0.00	0.00	0.00	

Planning Report

Database:	US EDM 2003.21 Multi User Db	Local Co-ordinate Reference:	Well 8515A-24 F25 496
Company:	EnCana Oil & Gas (USA) Inc	TVD Reference:	KBE @ 8320.0ft (Original Well Elev)
Project:	Story Gulch	MD Reference:	KBE @ 8320.0ft (Original Well Elev)
Site:	F25 496	North Reference:	True
Well:	8515A-24 F25 496	Survey Calculation Method:	Minimum Curvature
Wellbore:	DD		
Design:	Plan #1		

Planned Survey									
Measured Depth (ft)	Inclination (°)	Azimuth (°)	Vertical Depth (ft)	+N/-S (ft)	+E/-W (ft)	Vertical Section (ft)	Dogleg Rate (°/100ft)	Build Rate (°/100ft)	Comments / Formations
0.0	0.00	0.00	0.0	0.0	0.0	0.0	0.00	0.00	
100.0	0.00	0.00	100.0	0.0	0.0	0.0	0.00	0.00	
200.0	0.00	0.00	200.0	0.0	0.0	0.0	0.00	0.00	KOP = 200'
300.0	3.00	22.54	300.0	2.4	1.0	2.6	3.00	3.00	
400.0	6.00	22.54	399.6	9.7	4.0	10.5	3.00	3.00	
500.0	9.00	22.54	498.8	21.7	9.0	23.5	3.00	3.00	
600.0	12.00	22.54	597.1	38.5	16.0	41.7	3.00	3.00	
700.0	15.00	22.54	694.3	60.1	24.9	65.1	3.00	3.00	
800.0	18.00	22.54	790.2	86.3	35.8	93.5	3.00	3.00	
900.0	21.00	22.54	884.4	117.2	48.6	126.9	3.00	3.00	
1,000.0	24.00	22.54	976.8	152.5	63.3	165.1	3.00	3.00	
1,046.0	25.38	22.54	1,018.6	170.3	70.7	184.4	3.00	3.00	EOB at Inc. = 25.38°
1,100.0	25.38	22.54	1,067.4	191.6	79.5	207.5	0.00	0.00	
1,200.0	25.38	22.54	1,157.7	231.2	95.9	250.3	0.00	0.00	
1,300.0	25.38	22.54	1,248.1	270.8	112.4	293.2	0.00	0.00	
1,400.0	25.38	22.54	1,338.4	310.4	128.8	336.1	0.00	0.00	
1,500.0	25.38	22.54	1,428.8	350.0	145.2	378.9	0.00	0.00	
1,600.0	25.38	22.54	1,519.1	389.6	161.7	421.8	0.00	0.00	
1,700.0	25.38	22.54	1,609.5	429.2	178.1	464.7	0.00	0.00	
1,800.0	25.38	22.54	1,699.8	468.8	194.5	507.5	0.00	0.00	
1,900.0	25.38	22.54	1,790.2	508.4	210.9	550.4	0.00	0.00	
2,000.0	25.38	22.54	1,880.5	548.0	227.4	593.3	0.00	0.00	
2,100.0	25.38	22.54	1,970.9	587.5	243.8	636.1	0.00	0.00	
2,165.5	25.38	22.54	2,030.0	613.5	254.5	664.2	0.00	0.00	Mahog Bench
2,200.0	25.38	22.54	2,061.2	627.1	260.2	679.0	0.00	0.00	
2,300.0	25.38	22.54	2,151.6	666.7	276.7	721.8	0.00	0.00	
2,400.0	25.38	22.54	2,241.9	706.3	293.1	764.7	0.00	0.00	
2,500.0	25.38	22.54	2,332.3	745.9	309.5	807.6	0.00	0.00	
2,600.0	25.38	22.54	2,422.6	785.5	325.9	850.4	0.00	0.00	
2,700.0	25.38	22.54	2,513.0	825.1	342.4	893.3	0.00	0.00	
2,800.0	25.38	22.54	2,603.3	864.7	358.8	936.2	0.00	0.00	
2,900.0	25.38	22.54	2,693.6	904.3	375.2	979.0	0.00	0.00	
3,000.0	25.38	22.54	2,784.0	943.9	391.6	1,021.9	0.00	0.00	
3,100.0	25.38	22.54	2,874.3	983.5	408.1	1,064.8	0.00	0.00	
3,200.0	25.38	22.54	2,964.7	1,023.1	424.5	1,107.6	0.00	0.00	
3,300.0	25.38	22.54	3,055.0	1,062.6	440.9	1,150.5	0.00	0.00	
3,400.0	25.38	22.54	3,145.4	1,102.2	457.4	1,193.4	0.00	0.00	
3,500.0	25.38	22.54	3,235.7	1,141.8	473.8	1,236.2	0.00	0.00	
3,600.0	25.38	22.54	3,326.1	1,181.4	490.2	1,279.1	0.00	0.00	
3,700.0	25.38	22.54	3,416.4	1,221.0	506.6	1,321.9	0.00	0.00	
3,800.0	25.38	22.54	3,506.8	1,260.6	523.1	1,364.8	0.00	0.00	
3,900.0	25.38	22.54	3,597.1	1,300.2	539.5	1,407.7	0.00	0.00	
4,000.0	25.38	22.54	3,687.5	1,339.8	555.9	1,450.5	0.00	0.00	
4,100.0	25.38	22.54	3,777.8	1,379.4	572.4	1,493.4	0.00	0.00	
4,200.0	25.38	22.54	3,868.2	1,419.0	588.8	1,536.3	0.00	0.00	
4,300.0	25.38	22.54	3,958.5	1,458.6	605.2	1,579.1	0.00	0.00	
4,400.0	25.38	22.54	4,048.9	1,498.1	621.6	1,622.0	0.00	0.00	
4,500.0	25.38	22.54	4,139.2	1,537.7	638.1	1,664.9	0.00	0.00	
4,600.0	25.38	22.54	4,229.6	1,577.3	654.5	1,707.7	0.00	0.00	
4,700.0	25.38	22.54	4,319.9	1,616.9	670.9	1,750.6	0.00	0.00	
4,800.0	25.38	22.54	4,410.2	1,656.5	687.3	1,793.5	0.00	0.00	
4,900.0	25.38	22.54	4,500.6	1,696.1	703.8	1,836.3	0.00	0.00	

Planning Report

Database:	US EDM 2003.21 Multi User Db	Local Co-ordinate Reference:	Well 8515A-24 F25 496
Company:	EnCana Oil & Gas (USA) Inc	TVD Reference:	KBE @ 8320.0ft (Original Well Elev)
Project:	Story Gulch	MD Reference:	KBE @ 8320.0ft (Original Well Elev)
Site:	F25 496	North Reference:	True
Well:	8515A-24 F25 496	Survey Calculation Method:	Minimum Curvature
Wellbore:	DD		
Design:	Plan #1		

Planned Survey									
Measured Depth (ft)	Inclination (°)	Azimuth (°)	Vertical Depth (ft)	+N/-S (ft)	+E/-W (ft)	Vertical Section (ft)	Dogleg Rate (°/100ft)	Build Rate (°/100ft)	Comments / Formations
5,000.0	25.38	22.54	4,590.9	1,735.7	720.2	1,879.2	0.00	0.00	
5,100.0	25.38	22.54	4,681.3	1,775.3	736.6	1,922.0	0.00	0.00	
5,200.0	25.38	22.54	4,771.6	1,814.9	753.1	1,964.9	0.00	0.00	
5,300.0	25.38	22.54	4,862.0	1,854.5	769.5	2,007.8	0.00	0.00	
5,400.0	25.38	22.54	4,952.3	1,894.1	785.9	2,050.6	0.00	0.00	
5,500.0	25.38	22.54	5,042.7	1,933.6	802.3	2,093.5	0.00	0.00	
5,600.0	25.38	22.54	5,133.0	1,973.2	818.8	2,136.4	0.00	0.00	
5,700.0	25.38	22.54	5,223.4	2,012.8	835.2	2,179.2	0.00	0.00	
5,800.0	25.38	22.54	5,313.7	2,052.4	851.6	2,222.1	0.00	0.00	
5,900.0	25.38	22.54	5,404.1	2,092.0	868.1	2,265.0	0.00	0.00	
6,000.0	25.38	22.54	5,494.4	2,131.6	884.5	2,307.8	0.00	0.00	
6,100.0	25.38	22.54	5,584.8	2,171.2	900.9	2,350.7	0.00	0.00	
6,150.1	25.38	22.54	5,630.0	2,191.0	909.1	2,372.1	0.00	0.00	Was G
6,200.0	25.38	22.54	5,675.1	2,210.8	917.3	2,393.6	0.00	0.00	
6,300.0	25.38	22.54	5,765.5	2,250.4	933.8	2,436.4	0.00	0.00	
6,400.0	25.38	22.54	5,855.8	2,290.0	950.2	2,479.3	0.00	0.00	
6,500.0	25.38	22.54	5,946.2	2,329.6	966.6	2,522.1	0.00	0.00	
6,600.0	25.38	22.54	6,036.5	2,369.2	983.0	2,565.0	0.00	0.00	
6,700.0	25.38	22.54	6,126.8	2,408.7	999.5	2,607.9	0.00	0.00	
6,800.0	25.38	22.54	6,217.2	2,448.3	1,015.9	2,650.7	0.00	0.00	
6,900.0	25.38	22.54	6,307.5	2,487.9	1,032.3	2,693.6	0.00	0.00	
7,000.0	25.38	22.54	6,397.9	2,527.5	1,048.8	2,736.5	0.00	0.00	
7,100.0	25.38	22.54	6,488.2	2,567.1	1,065.2	2,779.3	0.00	0.00	
7,200.0	25.38	22.54	6,578.6	2,606.7	1,081.6	2,822.2	0.00	0.00	
7,300.0	25.38	22.54	6,668.9	2,646.3	1,098.0	2,865.1	0.00	0.00	
7,400.0	25.38	22.54	6,759.3	2,685.9	1,114.5	2,907.9	0.00	0.00	
7,500.0	25.38	22.54	6,849.6	2,725.5	1,130.9	2,950.8	0.00	0.00	
7,600.0	25.38	22.54	6,940.0	2,765.1	1,147.3	2,993.7	0.00	0.00	
7,700.0	25.38	22.54	7,030.3	2,804.7	1,163.8	3,036.5	0.00	0.00	
7,800.0	25.38	22.54	7,120.7	2,844.2	1,180.2	3,079.4	0.00	0.00	
7,900.0	25.38	22.54	7,211.0	2,883.8	1,196.6	3,122.2	0.00	0.00	
8,000.0	25.38	22.54	7,301.4	2,923.4	1,213.0	3,165.1	0.00	0.00	
8,100.0	25.38	22.54	7,391.7	2,963.0	1,229.5	3,208.0	0.00	0.00	
8,200.0	25.38	22.54	7,482.1	3,002.6	1,245.9	3,250.8	0.00	0.00	
8,300.0	25.38	22.54	7,572.4	3,042.2	1,262.3	3,293.7	0.00	0.00	
8,400.0	25.38	22.54	7,662.8	3,081.8	1,278.7	3,336.6	0.00	0.00	
8,500.0	25.38	22.54	7,753.1	3,121.4	1,295.2	3,379.4	0.00	0.00	
8,600.0	25.38	22.54	7,843.4	3,161.0	1,311.6	3,422.3	0.00	0.00	
8,700.0	25.38	22.54	7,933.8	3,200.6	1,328.0	3,465.2	0.00	0.00	
8,719.4	25.38	22.54	7,951.4	3,208.3	1,331.2	3,473.5	0.00	0.00	Start Drop -3.00
8,800.0	22.96	22.54	8,024.9	3,238.7	1,343.9	3,506.5	3.00	-3.00	
8,900.0	19.96	22.54	8,117.9	3,272.5	1,357.9	3,543.1	3.00	-3.00	
9,000.0	16.96	22.54	8,212.7	3,301.8	1,370.0	3,574.7	3.00	-3.00	
9,100.0	13.96	22.54	8,309.1	3,326.4	1,380.2	3,601.4	3.00	-3.00	
9,200.0	10.96	22.54	8,406.7	3,346.3	1,388.5	3,623.0	3.00	-3.00	
9,300.0	7.96	22.54	8,505.4	3,361.5	1,394.8	3,639.4	3.00	-3.00	
9,400.0	4.96	22.54	8,604.7	3,371.9	1,399.1	3,650.7	3.00	-3.00	
9,500.0	1.96	22.54	8,704.5	3,377.5	1,401.4	3,656.7	3.00	-3.00	
9,525.5	1.20	22.54	8,730.0	3,378.2	1,401.7	3,657.4	3.00	-3.00	Williams fork
9,565.5	0.00	0.00	8,770.0	3,378.5	1,401.9	3,657.8	3.00	-3.00	EOD at Inc. = 0° - Top of Gas - 8515A-24 F25 4
9,600.0	0.00	0.00	8,804.5	3,378.5	1,401.9	3,657.8	0.00	0.00	
9,700.0	0.00	0.00	8,904.5	3,378.5	1,401.9	3,657.8	0.00	0.00	

Planning Report

Database:	US EDM 2003.21 Multi User Db	Local Co-ordinate Reference:	Well 8515A-24 F25 496
Company:	EnCana Oil & Gas (USA) Inc	TVD Reference:	KBE @ 8320.0ft (Original Well Elev)
Project:	Story Gulch	MD Reference:	KBE @ 8320.0ft (Original Well Elev)
Site:	F25 496	North Reference:	True
Well:	8515A-24 F25 496	Survey Calculation Method:	Minimum Curvature
Wellbore:	DD		
Design:	Plan #1		

Planned Survey									
Measured Depth (ft)	Inclination (°)	Azimuth (°)	Vertical Depth (ft)	+N/-S (ft)	+E/-W (ft)	Vertical Section (ft)	Dogleg Rate (°/100ft)	Build Rate (°/100ft)	Comments / Formations
9,800.0	0.00	0.00	9,004.5	3,378.5	1,401.9	3,657.8	0.00	0.00	
9,900.0	0.00	0.00	9,104.5	3,378.5	1,401.9	3,657.8	0.00	0.00	
10,000.0	0.00	0.00	9,204.5	3,378.5	1,401.9	3,657.8	0.00	0.00	
10,100.0	0.00	0.00	9,304.5	3,378.5	1,401.9	3,657.8	0.00	0.00	
10,200.0	0.00	0.00	9,404.5	3,378.5	1,401.9	3,657.8	0.00	0.00	
10,225.5	0.00	0.00	9,430.0	3,378.5	1,401.9	3,657.8	0.00	0.00	Price_GR
10,300.0	0.00	0.00	9,504.5	3,378.5	1,401.9	3,657.8	0.00	0.00	
10,400.0	0.00	0.00	9,604.5	3,378.5	1,401.9	3,657.8	0.00	0.00	
10,500.0	0.00	0.00	9,704.5	3,378.5	1,401.9	3,657.8	0.00	0.00	
10,600.0	0.00	0.00	9,804.5	3,378.5	1,401.9	3,657.8	0.00	0.00	
10,700.0	0.00	0.00	9,904.5	3,378.5	1,401.9	3,657.8	0.00	0.00	
10,800.0	0.00	0.00	10,004.5	3,378.5	1,401.9	3,657.8	0.00	0.00	
10,900.0	0.00	0.00	10,104.5	3,378.5	1,401.9	3,657.8	0.00	0.00	
11,000.0	0.00	0.00	10,204.5	3,378.5	1,401.9	3,657.8	0.00	0.00	
11,100.0	0.00	0.00	10,304.5	3,378.5	1,401.9	3,657.8	0.00	0.00	
11,200.0	0.00	0.00	10,404.5	3,378.5	1,401.9	3,657.8	0.00	0.00	
11,300.0	0.00	0.00	10,504.5	3,378.5	1,401.9	3,657.8	0.00	0.00	
11,400.0	0.00	0.00	10,604.5	3,378.5	1,401.9	3,657.8	0.00	0.00	
11,500.0	0.00	0.00	10,704.5	3,378.5	1,401.9	3,657.8	0.00	0.00	
11,600.0	0.00	0.00	10,804.5	3,378.5	1,401.9	3,657.8	0.00	0.00	
11,700.0	0.00	0.00	10,904.5	3,378.5	1,401.9	3,657.8	0.00	0.00	
11,800.0	0.00	0.00	11,004.5	3,378.5	1,401.9	3,657.8	0.00	0.00	
11,900.0	0.00	0.00	11,104.5	3,378.5	1,401.9	3,657.8	0.00	0.00	
12,000.0	0.00	0.00	11,204.5	3,378.5	1,401.9	3,657.8	0.00	0.00	
12,100.0	0.00	0.00	11,304.5	3,378.5	1,401.9	3,657.8	0.00	0.00	
12,200.0	0.00	0.00	11,404.5	3,378.5	1,401.9	3,657.8	0.00	0.00	
12,300.0	0.00	0.00	11,504.5	3,378.5	1,401.9	3,657.8	0.00	0.00	
12,400.0	0.00	0.00	11,604.5	3,378.5	1,401.9	3,657.8	0.00	0.00	
12,500.0	0.00	0.00	11,704.5	3,378.5	1,401.9	3,657.8	0.00	0.00	
12,600.0	0.00	0.00	11,804.5	3,378.5	1,401.9	3,657.8	0.00	0.00	
12,625.5	0.00	0.00	11,830.0	3,378.5	1,401.9	3,657.8	0.00	0.00	Paludal
12,700.0	0.00	0.00	11,904.5	3,378.5	1,401.9	3,657.8	0.00	0.00	
12,800.0	0.00	0.00	12,004.5	3,378.5	1,401.9	3,657.8	0.00	0.00	
12,900.0	0.00	0.00	12,104.5	3,378.5	1,401.9	3,657.8	0.00	0.00	
13,000.0	0.00	0.00	12,204.5	3,378.5	1,401.9	3,657.8	0.00	0.00	
13,100.0	0.00	0.00	12,304.5	3,378.5	1,401.9	3,657.8	0.00	0.00	
13,200.0	0.00	0.00	12,404.5	3,378.5	1,401.9	3,657.8	0.00	0.00	
13,225.5	0.00	0.00	12,430.0	3,378.5	1,401.9	3,657.8	0.00	0.00	Rollins - 8515A-24 F25 496 BHL
13,300.0	0.00	0.00	12,504.5	3,378.5	1,401.9	3,657.8	0.00	0.00	
13,400.0	0.00	0.00	12,604.5	3,378.5	1,401.9	3,657.8	0.00	0.00	
13,500.0	0.00	0.00	12,704.5	3,378.5	1,401.9	3,657.8	0.00	0.00	
13,555.5	0.00	0.00	12,760.0	3,378.5	1,401.9	3,657.8	0.00	0.00	Cozzette
13,600.0	0.00	0.00	12,804.5	3,378.5	1,401.9	3,657.8	0.00	0.00	
13,700.0	0.00	0.00	12,904.5	3,378.5	1,401.9	3,657.8	0.00	0.00	
13,745.5	0.00	0.00	12,950.0	3,378.5	1,401.9	3,657.8	0.00	0.00	Corcoran
13,800.0	0.00	0.00	13,004.5	3,378.5	1,401.9	3,657.8	0.00	0.00	
13,900.0	0.00	0.00	13,104.5	3,378.5	1,401.9	3,657.8	0.00	0.00	
14,000.0	0.00	0.00	13,204.5	3,378.5	1,401.9	3,657.8	0.00	0.00	
14,025.5	0.00	0.00	13,230.0	3,378.5	1,401.9	3,657.8	0.00	0.00	Sego
14,100.0	0.00	0.00	13,304.5	3,378.5	1,401.9	3,657.8	0.00	0.00	
14,200.0	0.00	0.00	13,404.5	3,378.5	1,401.9	3,657.8	0.00	0.00	
14,225.5	0.00	0.00	13,430.0	3,378.5	1,401.9	3,657.8	0.00	0.00	L Sego

Planning Report

Database: US EDM 2003.21 Multi User Db	Local Co-ordinate Reference: Well 8515A-24 F25 496
Company: EnCana Oil & Gas (USA) Inc	TVD Reference: KBE @ 8320.0ft (Original Well Elev)
Project: Story Gulch	MD Reference: KBE @ 8320.0ft (Original Well Elev)
Site: F25 496	North Reference: True
Well: 8515A-24 F25 496	Survey Calculation Method: Minimum Curvature
Wellbore: DD	
Design: Plan #1	

Planned Survey									
Measured Depth (ft)	Inclination (°)	Azimuth (°)	Vertical Depth (ft)	+N/-S (ft)	+E/-W (ft)	Vertical Section (ft)	Dogleg Rate (°/100ft)	Build Rate (°/100ft)	Comments / Formations
14,300.0	0.00	0.00	13,504.5	3,378.5	1,401.9	3,657.8	0.00	0.00	
14,400.0	0.00	0.00	13,604.5	3,378.5	1,401.9	3,657.8	0.00	0.00	
14,475.5	0.00	0.00	13,680.0	3,378.5	1,401.9	3,657.8	0.00	0.00	TD at 14,475.5' MD
14,500.0	0.00	0.00	13,704.5	3,378.5	1,401.9	3,657.8	0.00	0.00	
14,600.0	0.00	0.00	13,804.5	3,378.5	1,401.9	3,657.8	0.00	0.00	
14,700.0	0.00	0.00	13,904.5	3,378.5	1,401.9	3,657.8	0.00	0.00	
14,725.5	0.00	0.00	13,930.0	3,378.5	1,401.9	3,657.8	0.00	0.00	

Targets										
Target Name	Dip Angle (°)	Dip Dir. (°)	TVD (ft)	+N/-S (ft)	+E/-W (ft)	Northing (ft)	Easting (ft)	Latitude	Longitude	
8515A-24 F25 496 TGT - hit/miss target - Shape - Point	0.00	0.00	8,770.0	3,378.5	1,401.9	1,684,471.05	2,264,203.24	39° 41' 0.94 N	108° 6' 52.92 W	
8515A-24 F25 496 BHL - plan hits target center - Rectangle (sides W30.0 H50.0 D0.0)	0.00	0.00	12,430.0	3,378.5	1,401.9	1,684,471.05	2,264,203.24	39° 41' 0.94 N	108° 6' 52.92 W	

Formations						
Measured Depth (ft)	Vertical Depth (ft)	Name	Lithology	Dip (°)	Dip Direction (°)	
2,165.5	2,030.0	Mahog Bench		0.00		
6,150.1	5,630.0	Was G		0.00		
9,525.5	8,730.0	Williams fork		0.00		
9,565.5	8,770.0	Top of Gas		0.00		
10,225.5	9,430.0	Price _GR		0.00		
12,625.5	11,830.0	Paludal		0.00		
13,225.5	12,430.0	Rollins		0.00		
13,555.5	12,760.0	Cozzette		0.00		
13,745.5	12,950.0	Corcoran		0.00		
14,025.5	13,230.0	Sego		0.00		
14,225.5	13,430.0	L Segos		0.00		

Plan Annotations				
Measured Depth (ft)	Vertical Depth (ft)	+N/-S (ft)	+E/-W (ft)	Comment
200.0	200.0	0.0	0.0	KOP = 200'
1,046.0	1,018.6	170.3	70.7	EOB at Inc. = 25.38°
8,719.4	7,951.4	3,208.3	1,331.2	Start Drop -3.00
9,565.5	8,770.0	3,378.5	1,401.9	EOD at Inc. = 0°
14,475.5	13,680.0	3,378.5	1,401.9	TD at 14,475.5' MD
14,725.5	13,930.0	3,378.5	1,401.9	Permit TD at 14,725.5' MD