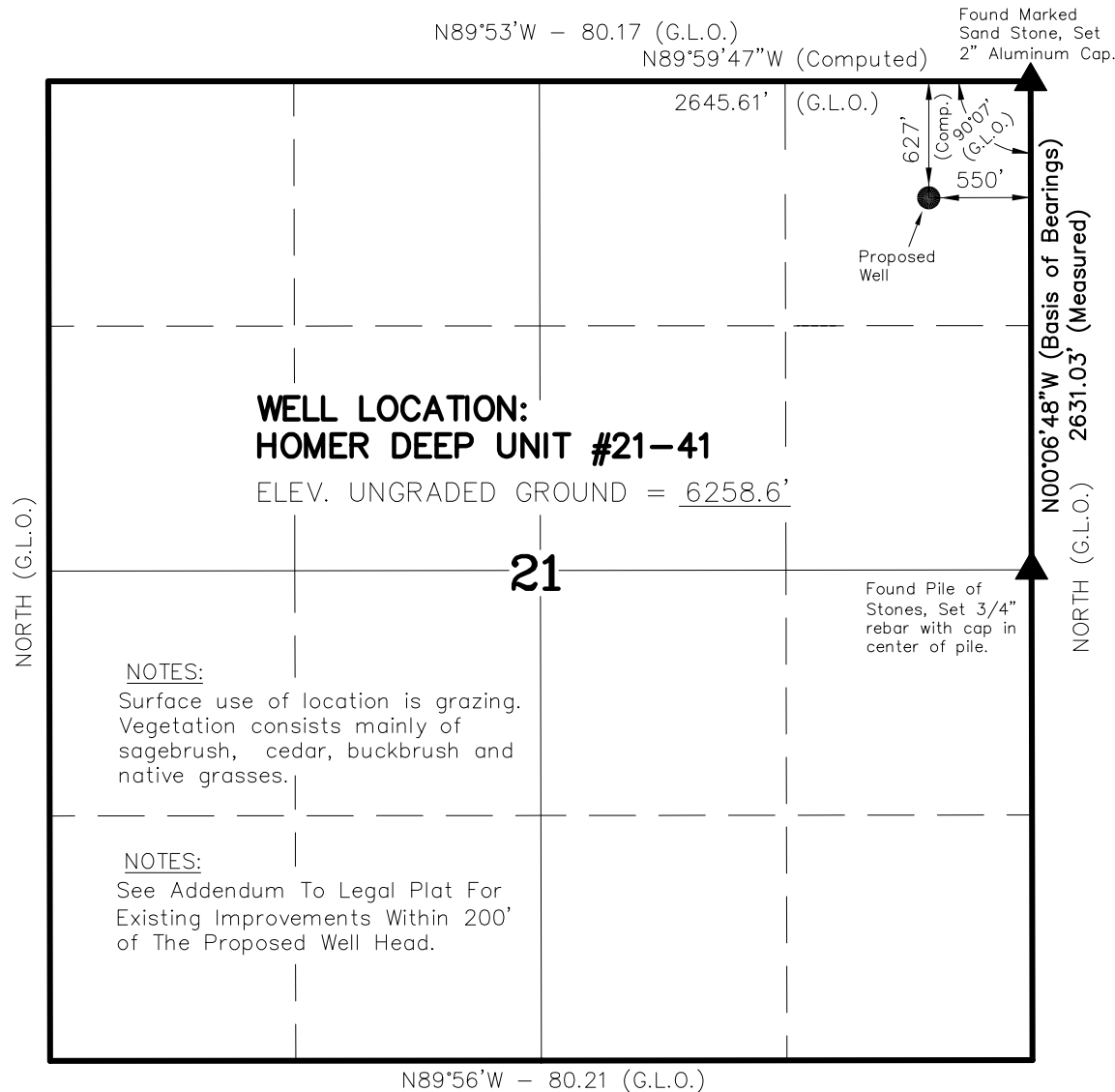
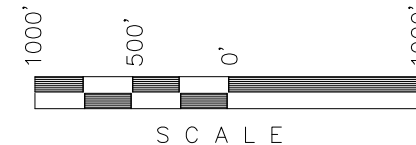


T8S, R98W, 6th P.M.

BLACK HILLS PLATEAU PRODUCTION



WELL LOCATION, HOMER DEEP UNIT #21-41, LOCATED AS SHOWN IN THE SW 1/4 NE 1/4 OF SECTION 21, T8S, R98W, 6th P.M. MESA COUNTY, COLORADO.



NOTES:

1. Well footages are measured at right angles to the Section Lines.
2. G.L.O. distances are shown in feet or chains.  
1 chain = 66 feet.
3. Bearings are based on Global Positioning Satellite observations.
4. Proposed Well Head bears S41°11'10"W 833.26' from the Northeast Corner of Section 21.

THIS IS TO CERTIFY THAT THE ABOVE PLAT WAS PREPARED FROM FIELD NOTES OF ACTUAL SURVEYS MADE BY ME OR UNDER MY SUPERVISION AND THAT THE SAME ARE TRUE AND CORRECT TO THE BEST OF MY KNOWLEDGE AND BELIEF.

*Kathy R. Kay*  
37982  
REGISTERED LAND SURVEYOR  
REGISTRATION NO. 37982  
STATE OF COLORADO

▲ = SECTION CORNERS LOCATED

BASIS OF ELEVATION IS THE NORTHEAST CORNER OF SECTION 14, T8S, R98W, 6th P.M. THE ELEVATION OF THIS CORNER IS SHOWN ON THE WAGON TRACK RIDGE 7.5 MIN. QUADRANGLE AS BEING 5300'.

HOMER DEEP UNIT #21-41  
(Proposed Well Head) NAD 83

LATITUDE = 39.35027°N  
(39° 21' 00.97"N)  
LONGITUDE = 108.32446°W  
(108° 19' 28.05"W)

Operator: Brock Slaugh / PDOP = 1.9

TIMBERLINE LAND SURVEYING, INC.

38 WEST 100 NORTH. - VERNAL, UTAH 84078  
(435) 789-1365

DATE SURVEYED: 01-25-07	SURVEYED BY: B.J.S.	SHEET 2a OF 11
DATE DRAWN: 02-07-07	DRAWN BY: M.W.W.	
SCALE: 1" = 1000'	Date Last Revised: 12-29-09 M.W.W.	