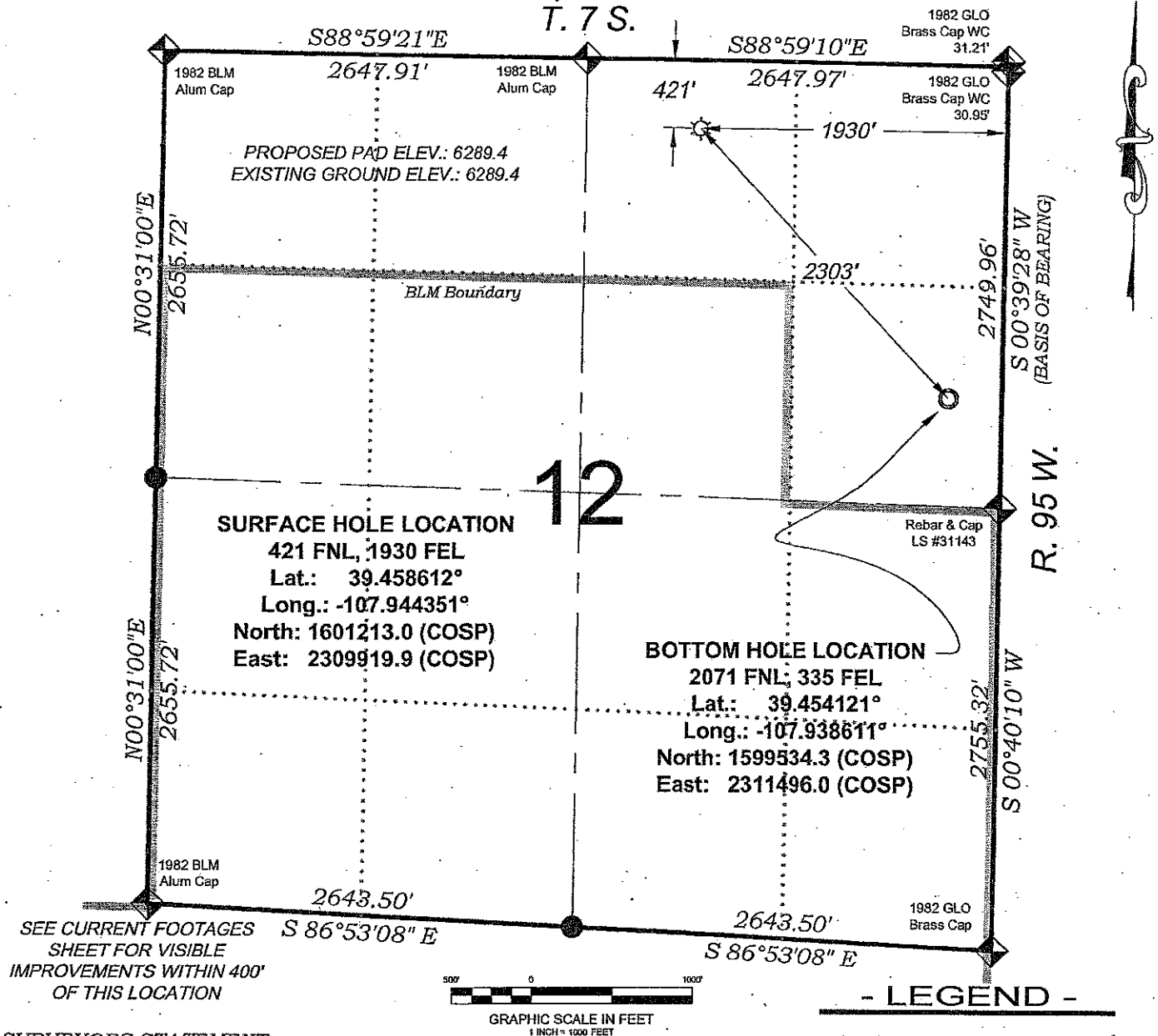


Diamond Elk, LLC PA 442-12

T. 7 S.



SURVEYORS STATEMENT

I, MICHAEL J. LANGHORNE, A REGISTERED LAND SURVEYOR IN THE STATE OF COLORADO DO HEREBY CERTIFY THAT THE SURVEY SHOWN HEREON WAS PREPARED UNDER MY DIRECT SUPERVISION AND HAS BEEN STAKED ON THE GROUND AS SHOWN ON THE PLAT AND CHECKING THAT THIS MAP IS A TRUE REPRESENTATION THEREOF.

MICHAEL J. LANGHORNE, COLORADO REGISTRATION NO. 36572 FOR AND ON BEHALF OF BOOKCLIFF SURVEY SERVICES, INC.

REFERENCES

- 1) DEPENDENT RESURVEY T. 7 S., R. 95 W., 6th P.M. (GLO PLAT)
- 2) U.S.G.S. QUAD: RULISON, CO

NOTES

- 1) ELEVATIONS BASED ON N.A.V.D. 1988 PUBLISHED COORDINATES.
- 2) LATITUDES AND LONGITUDES ARE BASE ON NAD 83, PUBLISHED COORDINATES
- 3) STATE PLANE COORDINATES ARE BASED ON COLORADO CENTRAL ZONE, U.S. SURVEY FEET.
- 4) ELEVATION MASK SET TO 15°
- 5) GPS OPERATOR J. KIRKPATRICK, OBSERVED A PDOP OF LESS THAN 6.0
- 6) SURFACE AND BOTTOM HOLE LOCATIONS ARE MEASURED 90° FROM SECTION LINES.

WELL LOCATION PLAT Prepared for:

Williams Williams Production, RMT

NW1/4 NE1/4, SECTION 12
 T. 7 S., R. 95 W. of the 6th P.M.
 GARFIELD COUNTY, COLORADO

SURVEY DATE: 7/8/09

MAP DATE: 7/17/09

SCALE: 1" = 1000'

PLAT: 1 of 9

PROJECT: Williams

Bookcliff Survey Services, Inc.
 130 East Third Street
 Fort Collins, Colorado 80501
 Ph: (970) 642-1330
 Fax: (970) 642-4773

BOOKCLIFF
 Survey Services, Inc.