

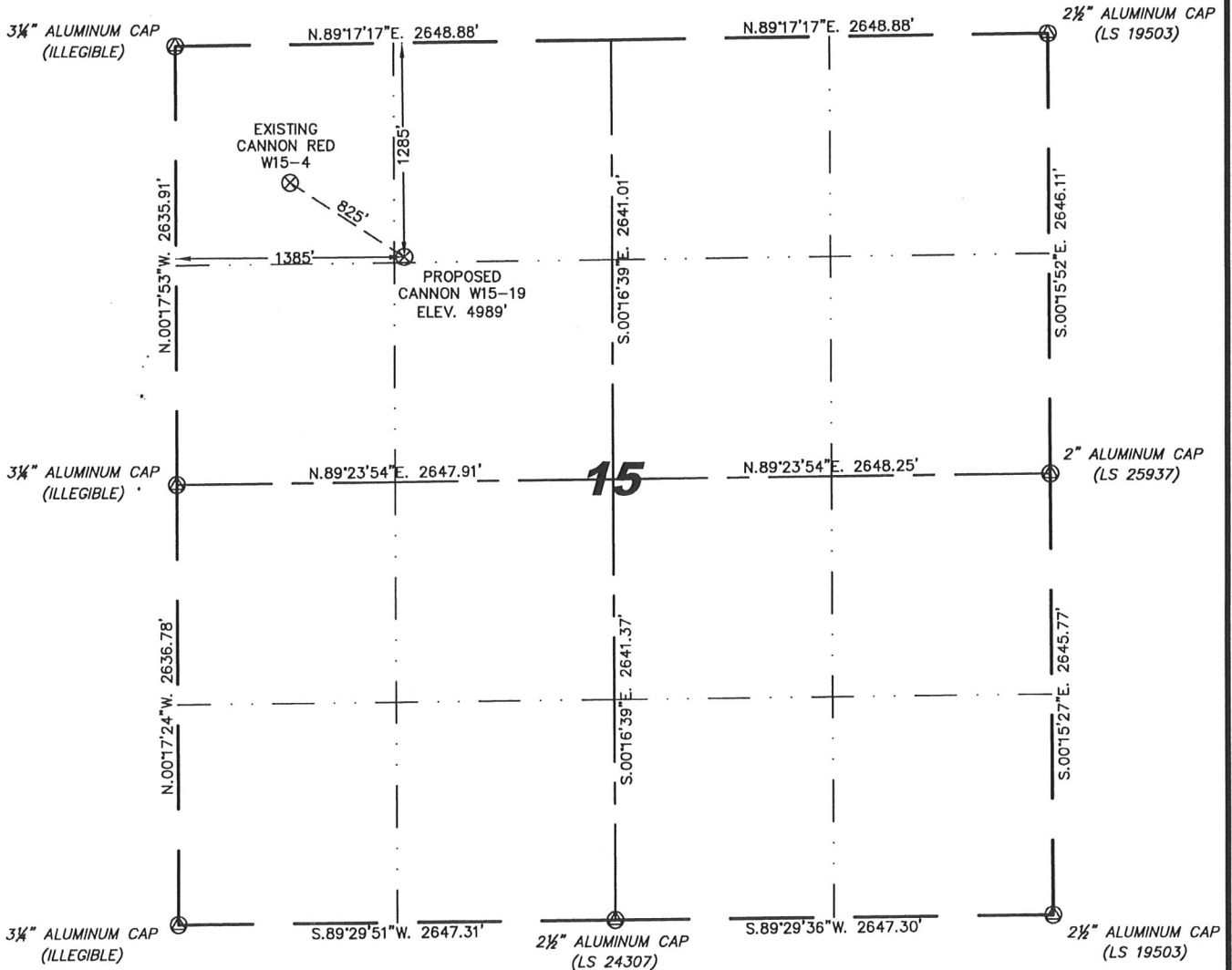
Steil Surveying Services, LLC

1102 West 19th Street P.O. BOX 2073

Cheyenne, Wyoming 82009

WELL LOCATION CERTIFICATE
THIS MAP DOES NOT REPRESENT A BOUNDARY SURVEY

SECTION 15
TOWNSHIP 2 NORTH
RANGE 66 WEST



0 1000
Scale: 1" = 1000'

IN ACCORDANCE WITH A REQUEST FROM JOE JOHNSON - NOBLE ENERGY INC, STEIL SURVEYING SERVICES, LLC HAS DETERMINED THE LOCATION OF THE CANNON W15-19 WELL TO BE 1285' FNL, 1385' FWL, AS MEASURED AT NINETY (90) DEGREES FROM THE SECTION LINES, SECTION 15, TOWNSHIP 2 NORTH, RANGE 66 WEST, 6TH PRINCIPLE MERIDIAN, WELD COUNTY, COLORADO.

I HEREBY CERTIFY THAT THIS WELL LOCATION CERTIFICATE WAS PREPARED BY ME, OR UNDER MY DIRECT SUPERVISION, THAT THE FIELD WORK WAS COMPLETED ON 07/22/2009, FOR AND ON BEHALF OF NOBLE ENERGY INC, THAT IT IS NOT A LAND SURVEY PLAT OR AN IMPROVEMENT SURVEY PLAT, AND THAT IT IS NOT TO BE RELIED UPON FOR ESTABLISHMENT OF FENCE, BUILDING, OR OTHER FUTURE IMPROVEMENT LINES.



Completed 07/27/2009

NOTES:

- 1) BASIS OF BEARINGS FOR THIS MAP ARE BASED UPON GPS OBSERVATIONS MADE ON 01/07/2008 BETWEEN MONUMENTS LOCATED AT THE SOUTHEAST SECTION CORNER AND THE NORTHEAST SECTION CORNER OF SAID SECTION AND WITH ALL BEARINGS SHOWN HEREON RELATIVE THERETO.
- 2) ELEVATIONS ARE BASED UPON NGS OPUS SOLUTION NAVD 88 DATUM.
- 3) THE NEAREST EXISTING WELL IS: CANNON RED W15-4, 825' NORTHWEST.
- 4) SEE VISIBLE IMPROVEMENTS EXHIBIT FOR ALL IMPROVEMENTS WITHIN 400'.
- 5) THE LOCATION FALLS IN PASTURE LAND.

LATITUDE & LONGITUDE (NAD 83 SURFACE HOLE):
 LATITUDE: N 40.14186°
 LONGITUDE: W 104.76783°
 PDOP: 3.4
 QUARTER-QUARTER: NE/4NW/4
 NEAREST PROPERTY LINE: 1285' TO THE NORTH

LEGEND

- (A) FOUND SURVEY MONUMENT PER MONUMENT RECORD - EXCEPTIONS NOTED.
- (C) CALCULATED DIMENSION

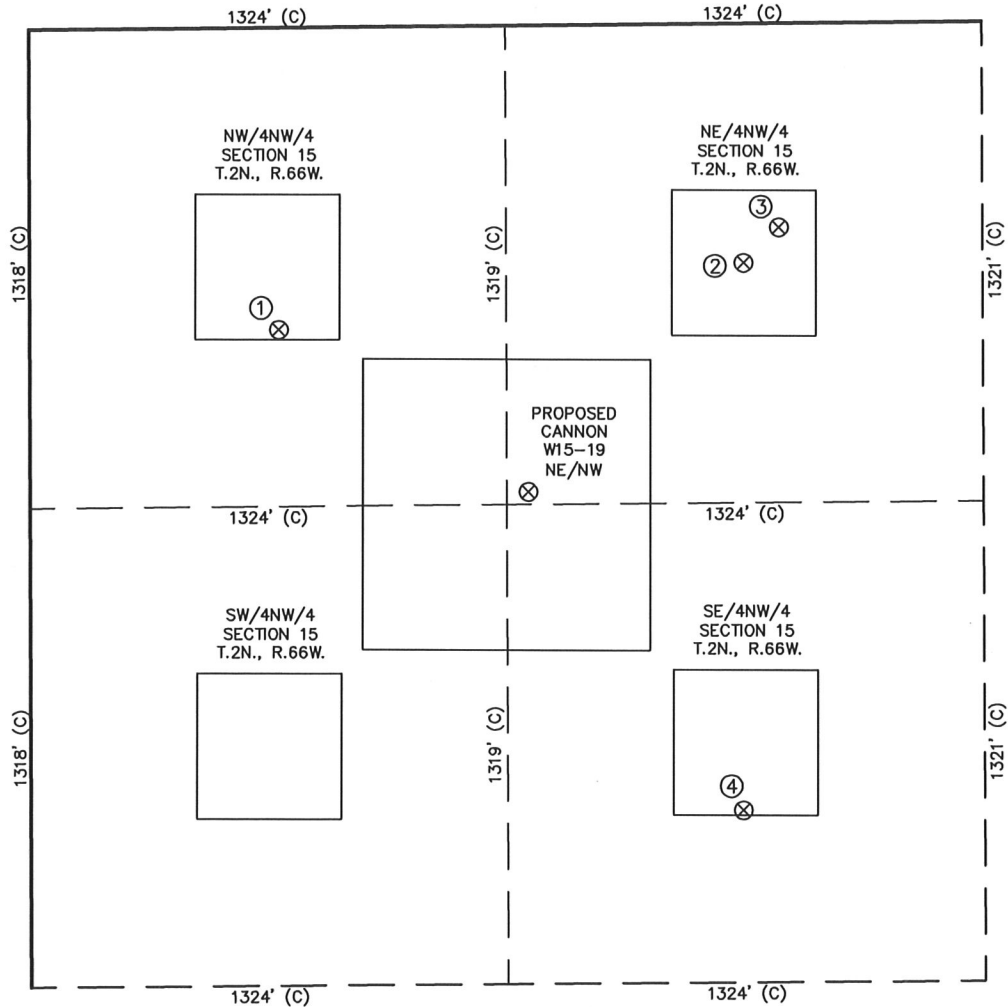
David C. Holmes
 Professional Land Surveyor Registration No. 32828
 State of Colorado

JOB #: 09086

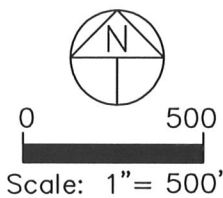
NOTICE: According to Colorado law you MUST commence any legal action based upon any defect in this W.L.C. within three years after you first discover such defect. In no event may any action based upon any defect in this W.L.C. be commenced more than ten years from this sold date of the certification shown hereon.

SITE SKETCH – CANNON W15-19

SECTION 15
TOWNSHIP 2 NORTH
RANGE 66 WEST



①	②	③	④
CANNON RED W15-4 NW/NW SEC. 15 832' FNL 692' FWL EL 4982' N 40.14310 W 104.77030 PDOP 2.0	CANNON RED W15-3 NE/NW SEC. 15 660' FNL 1985' FWL EL 4986' N 40.14359 W 104.76567 PDOP 2.3	HSR-CANNON 3-15 NE/NW SEC. 15 563' FNL 2084' FWL EL 4984' N 40.14385 W 104.76532 PDOP 2.3	CANNON LAND 6-15 A SE/NW SEC. 15 2166' FNL 1979' FWL EL 5004' N 40.13945 W 104.76571 PDOP 3.6



- NOTES:
- 1) THIS SKETCH DOES NOT REPRESENT A BOUNDARY SURVEY.
 - 2) THE DATUM FOR THE LATITUDES AND LONGITUDES ON THIS SKETCH IS NAD83.