

Steil Surveying Services, LLC

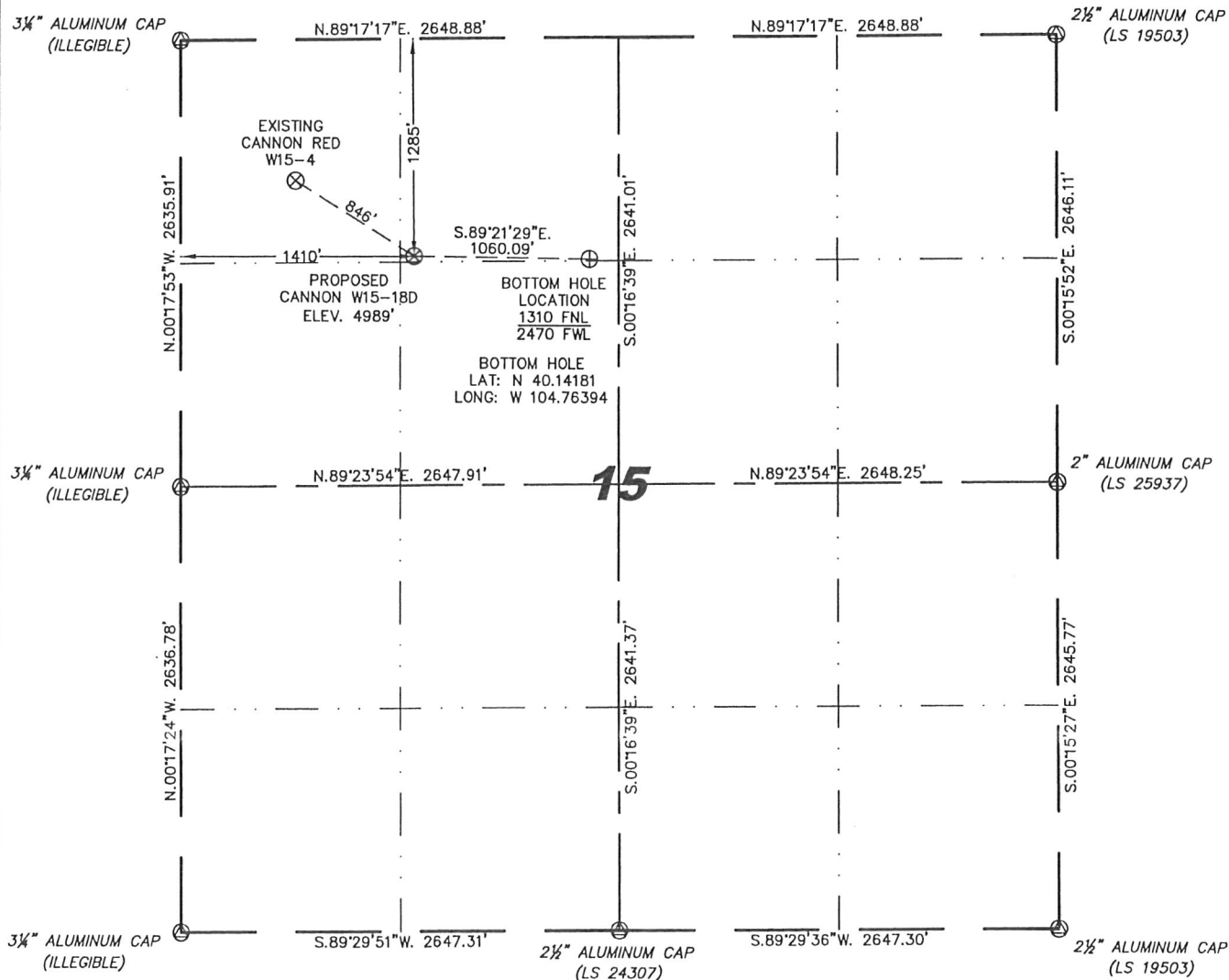
1102 West 19th Street P.O. BOX 2073

Cheyenne, Wyoming 82009

# WELL LOCATION CERTIFICATE

THIS MAP DOES NOT REPRESENT A BOUNDARY SURVEY

SECTION 15  
TOWNSHIP 2 NORTH  
RANGE 66 WEST



0 1000  
Scale: 1" = 1000'

IN ACCORDANCE WITH A REQUEST FROM JOE JOHNSON - NOBLE ENERGY INC, STEIL SURVEYING SERVICES, LLC HAS DETERMINED THE LOCATION OF THE CANNON W15-18D WELL TO BE 1285' FNL, 1410' FWL, AS MEASURED AT NINETY (90) DEGREES FROM THE SECTION LINES, SECTION 15, TOWNSHIP 2 NORTH, RANGE 66 WEST, 6TH PRINCIPLE MERIDIAN, WELD COUNTY, COLORADO.

I HEREBY CERTIFY THAT THIS WELL LOCATION CERTIFICATE WAS PREPARED BY ME, OR UNDER MY DIRECT SUPERVISION, THAT THE FIELD WORK WAS COMPLETED ON 07/22/2009, FOR AND ON BEHALF OF NOBLE ENERGY INC, THAT IT IS NOT A LAND SURVEY PLAT OR AN IMPROVEMENT SURVEY PLAT, AND THAT IT IS NOT TO BE RELIED UPON FOR ESTABLISHMENT OF FENCE, BUILDING, OR OTHER FUTURE IMPROVEMENT LINES.

## NOTES:

- 1) BASIS OF BEARINGS FOR THIS MAP ARE BASED UPON GPS OBSERVATIONS MADE ON 01/07/2008 BETWEEN MONUMENTS LOCATED AT THE SOUTHEAST SECTION CORNER AND THE NORTHEAST SECTION CORNER OF SAID SECTION AND WITH ALL BEARINGS SHOWN HEREON RELATIVE THERETO.
- 2) ELEVATIONS ARE BASED UPON NGS OPUS SOLUTION NAVD 88 DATUM.
- 3) THE NEAREST EXISTING WELL IS: CANNON RED W15-4, 846' NORTHWEST.
- 4) SEE VISIBLE IMPROVEMENTS EXHIBIT FOR ALL IMPROVEMENTS WITHIN 400'.
- 5) THE LOCATION FALLS IN PASTURE LAND.

LATITUDE & LONGITUDE (NAD 83 SURFACE HOLE):

LATITUDE: N 40.14186°

LONGITUDE: W 104.76774°

PDOP: 3.4

QUARTER-QUARTER: NE/4NW/4

NEAREST PROPERTY LINE: 1285' TO THE NORTH

## LEGEND

- (A) FOUND SURVEY MONUMENT PER MONUMENT RECORD - EXCEPTIONS NOTED.
- (C) CALCULATED DIMENSION

David C. Holmes  
Professional Land Surveyor Registration No. 32828  
State of Colorado

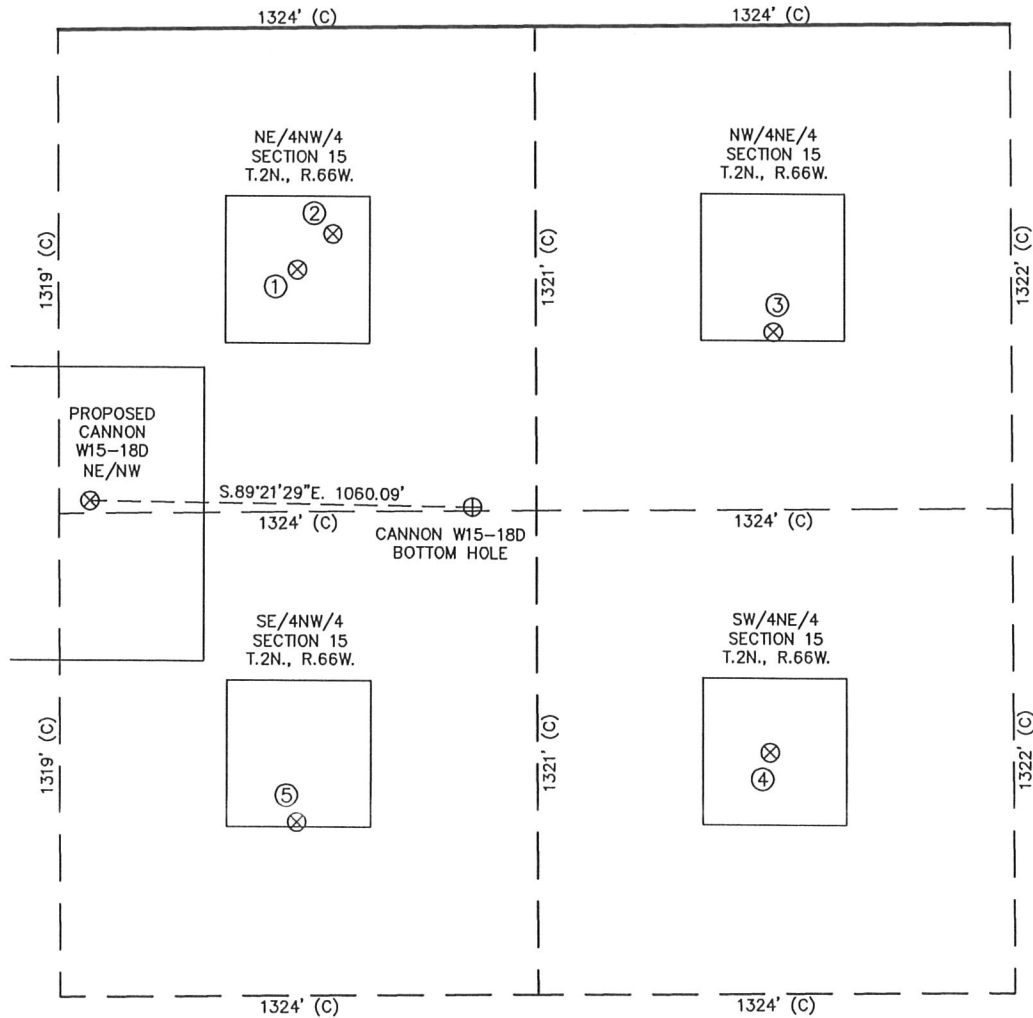
JOB #: 09086

Completed 07/27/2009

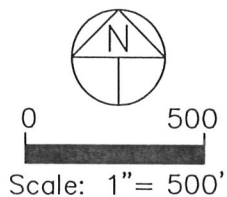


# SITE SKETCH – CANNON W15-18D

SECTION 15  
TOWNSHIP 2 NORTH  
RANGE 66 WEST



①	②	③	④	⑤
CANNON RED W15-3 NE/NW SEC. 15 660' FNL 1985' FWL EL 4986' N 40.14359 W 104.76567 PDOP 2.3	HSR-CANNON 3-15 NE/NW SEC. 15 563' FNL 2084' FWL EL 4984' N 40.14385 W 104.76532 PDOP 2.3	CANNON 31-15 NW/NE SEC. 15 838' FNL 1985' FEL EL 5010' N 40.14311 W 104.76093 PDOP 2.4	CANNON 32-15 SW/NE SEC. 15 1984' FNL 1999' FEL EL 5021' N 40.13997 W 104.76099 PDOP 2.6	CANNON LAND 6-15 A SE/NW SEC. 15 2166' FNL 1979' FWL EL 5004' N 40.13945 W 104.76571 PDOP 3.6



## NOTES:

- 1) THIS SKETCH DOES NOT REPRESENT A BOUNDARY SURVEY.
- 2) THE DATUM FOR THE LATITUDES AND LONGITUDES ON THIS SKETCH IS NAD83.