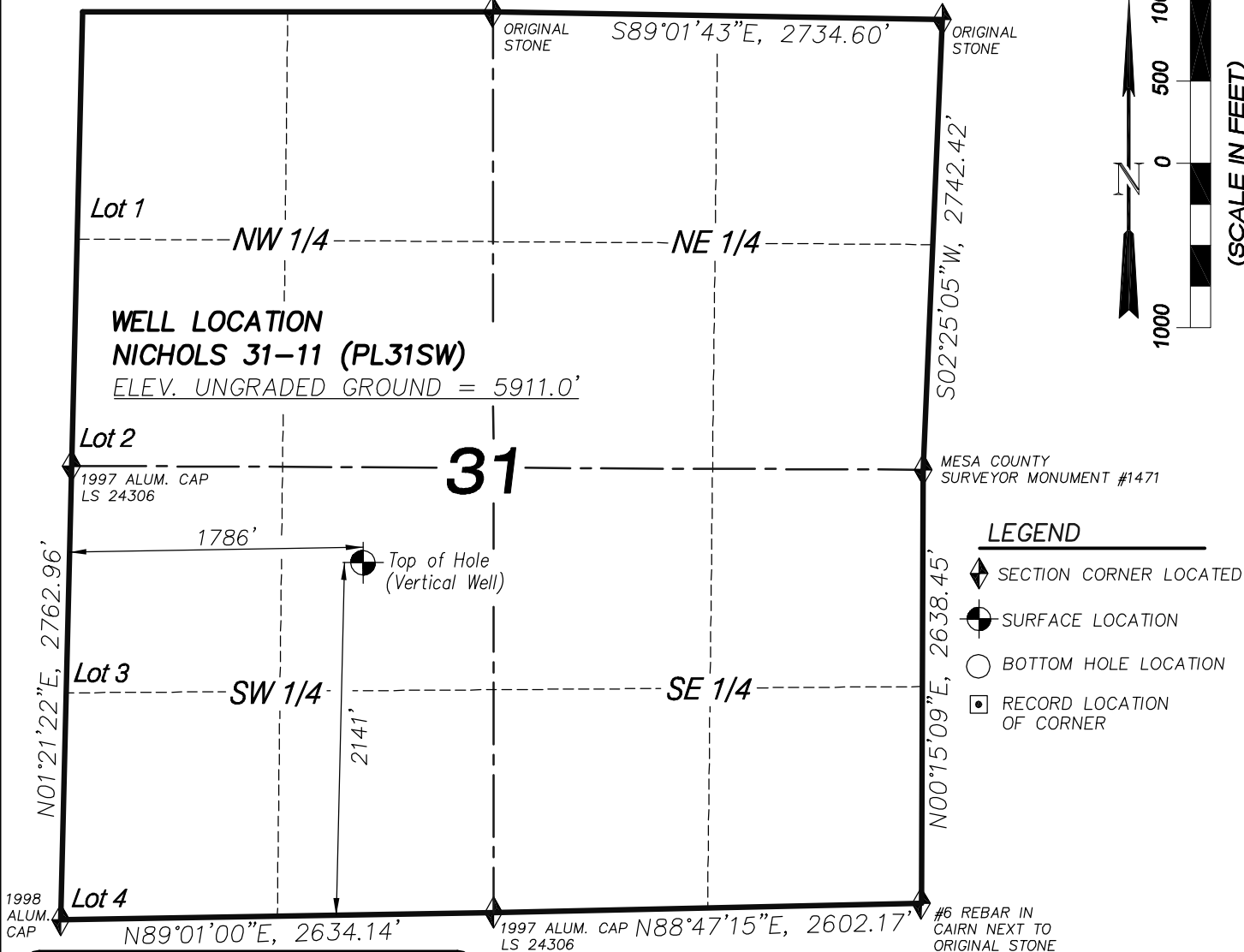
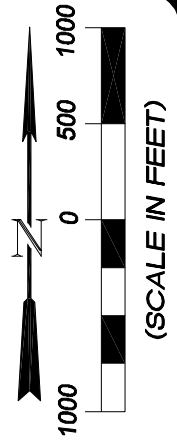


T9S, R95W, 6th P.M.



WELL LOCATION
NICHOLS 31-11 (PL31SW)
 ELEV. UNGRADED GROUND = 5911.0'

31

NICHOLS 31-11 (PL31SW) WELL
 (WELLHEAD LOCATION) NAD 83
 LATITUDE = 39.23036° N
 LONGITUDE = 108.03774° W
 (BOTTOM HOLE LOCATION) NAD 83
 LATITUDE = 39.23036° N
 LONGITUDE = 108.03774° W

CERTIFICATE OF SURVEYOR
 I, TED TAGGART OF FRUITA, COLORADO HEREBY CERTIFY THAT THIS MAP WAS MADE FROM NOTES TAKEN DURING AN ACTUAL SURVEY MADE BY ME OR UNDER MY DIRECTION FOR ENCANA OIL & GAS (USA) INC. AND THAT THIS LOCATION HAS BEEN STAKED ON THE GROUND AS SHOWN HEREON.



- NOTES
1. WELL FOOTAGES ARE MEASURED AT RIGHT ANGLES TO SECTION LINES.
 2. BASIS OF BEARING: GEODETIC- BASED ON GPS OBSERVATIONS.
 3. ELEVATIONS BASED ON GPS OBSERVATIONS, NAVD 88 (GEOID 03), POST PROCESSED USING NGS OPUS.
 4. THIS IS A VERTICAL WELL.
 5. SEE ADDENDUM TO LEGAL PLAT (SHEET 1a) FOR VISIBLE IMPROVEMENTS WITHIN 400 FEET OF THE PROPOSED OIL AND GAS LOCATION.
 6. CONTROL FOR SURVEY WAS ESTABLISHED USING DIFFERENTIALLY CORRECTED GPS FROM AN OPUS BASED CONTROL NETWORK. WELL LOCATION WAS ESTABLISHED USING NON-GPS CONVENTIONAL METHODS, THEREFORE NO PDOOP READING WAS TAKEN.

MAP to ACCOMPANY
APPLICATION for PERMIT to DRILL
EnCana Oil & Gas (USA) Inc.
Nichols 31-11 (PL31SW) Well
 NE1/4 SW1/4, SECTION 31
 T9S, R95W, 6th P.M.
 MESA COUNTY, COLORADO

WASATCH SURVEYING
 906 Main Street
 Evanston, Wyoming 82930
 Phone No. (307) 789-4545

Location Plat		Scale: 1" = 1000'	SHEET 1 OF 10	
Project No.	09-04-42	Date Surveyed:		10/21/09
Date Drawn:	11/10/09	Latest Revision Date:		