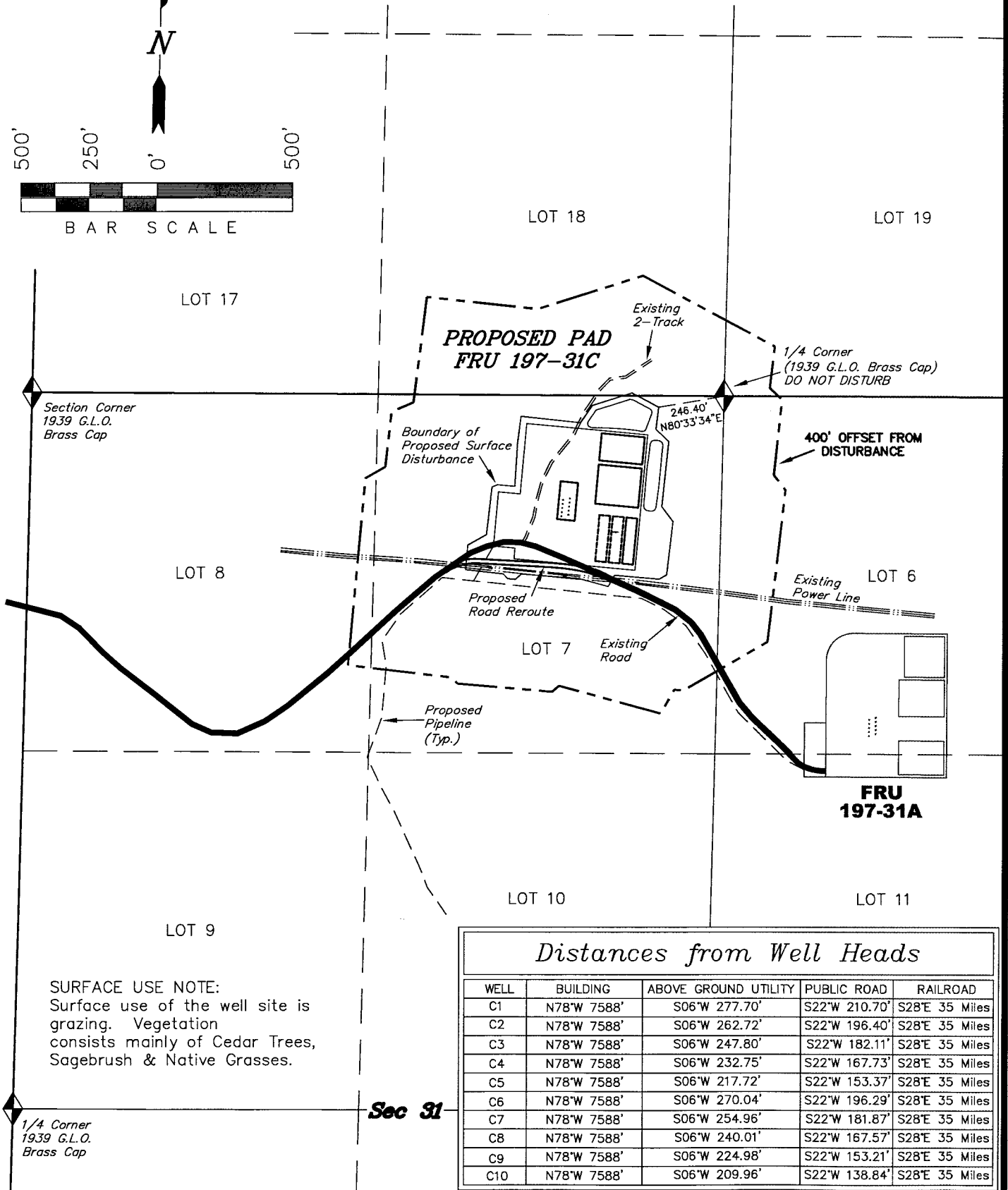
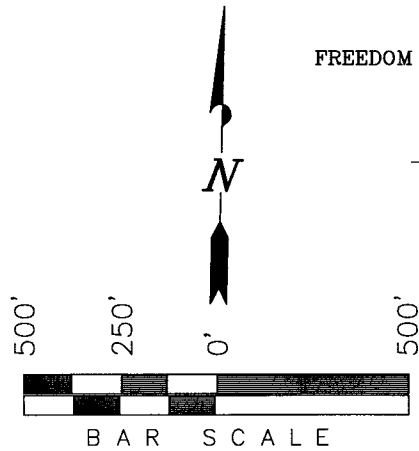


Exxon Mobil Corporation

ADDENDUM TO LEGAL PLATS FOR

WELL PAD (FREEDOM CREEK UNIT 197-31C)
FREEDOM CREEK UNIT 197-31C1, C2, C3, C4, C5, C6, C7, C8, C9 & C10
Section 31, T1S, R97W, 6th P.M.



SURFACE USE NOTE:
Surface use of the well site is grazing. Vegetation consists mainly of Cedar Trees, Sagebrush & Native Grasses.

Distances from Well Heads

WELL	BUILDING	ABOVE GROUND UTILITY	PUBLIC ROAD	RAILROAD
C1	N78°W 7588'	S06°W 277.70'	S22°W 210.70'	S28°E 35 Miles
C2	N78°W 7588'	S06°W 262.72'	S22°W 196.40'	S28°E 35 Miles
C3	N78°W 7588'	S06°W 247.80'	S22°W 182.11'	S28°E 35 Miles
C4	N78°W 7588'	S06°W 232.75'	S22°W 167.73'	S28°E 35 Miles
C5	N78°W 7588'	S06°W 217.72'	S22°W 153.37'	S28°E 35 Miles
C6	N78°W 7588'	S06°W 270.04'	S22°W 196.29'	S28°E 35 Miles
C7	N78°W 7588'	S06°W 254.96'	S22°W 181.87'	S28°E 35 Miles
C8	N78°W 7588'	S06°W 240.01'	S22°W 167.57'	S28°E 35 Miles
C9	N78°W 7588'	S06°W 224.98'	S22°W 153.21'	S28°E 35 Miles
C10	N78°W 7588'	S06°W 209.96'	S22°W 138.84'	S28°E 35 Miles

Sec 31

SURVEYED BY: D.P. SURVEY DATE: 01-02-06
DRAWN BY: F.T.M. DATE DRAWN: 09-22-09
SCALE: 1" = 500' REVISED: F.T.M. 09-24-09

Tri State
Land Surveying, Inc.
180 NORTH VERNAL AVE. VERNAL, UTAH 84078
(435) 781-2501

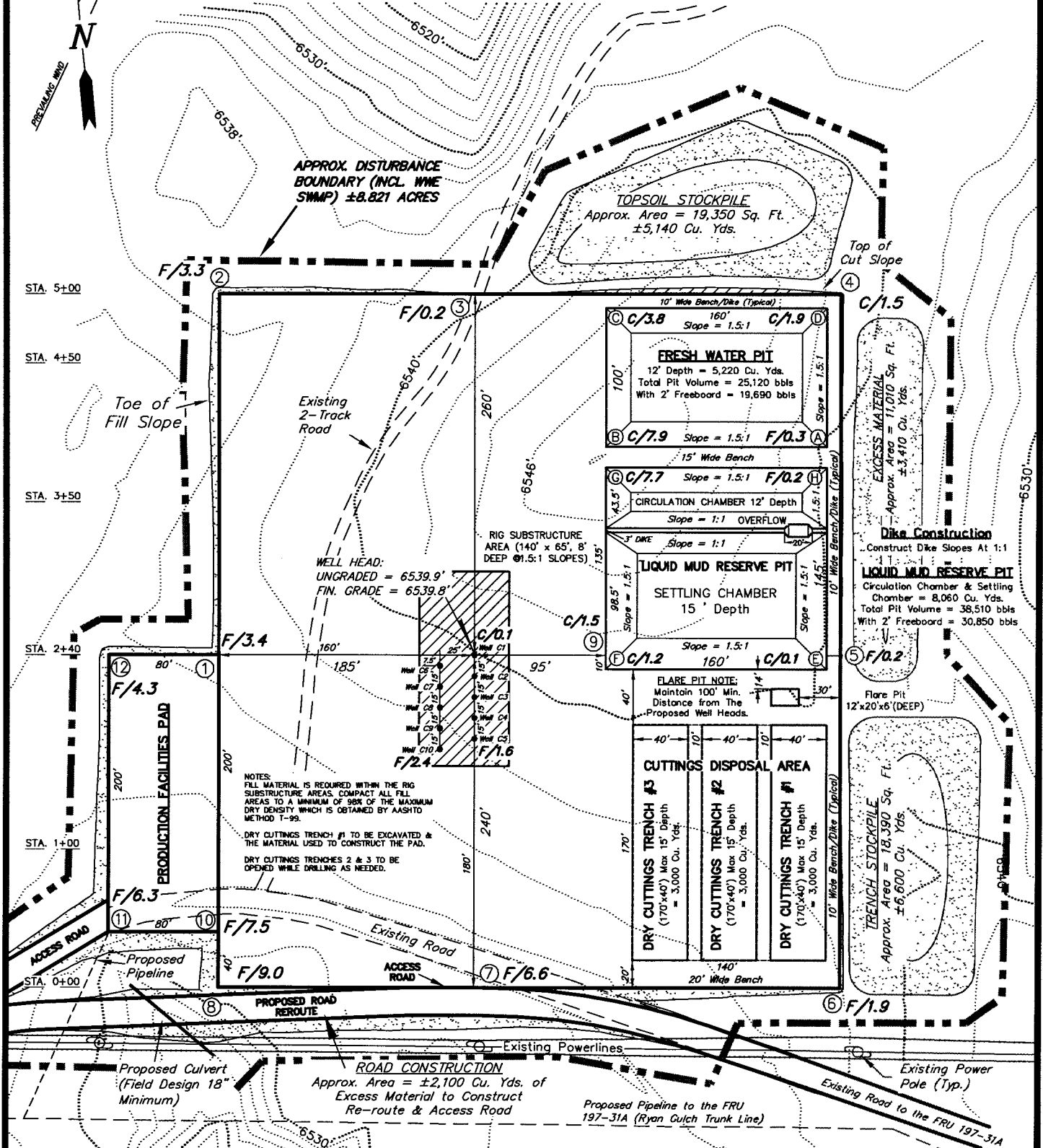
SHEET
2k
OF 12

EXXON MOBIL CORPORATION

FIGURE #1

LOCATION LAYOUT

WELL PAD (FREEDOM UNIT 197-31C)
FREEDOM UNIT 197-31C1, C2, C3, C4, C5, C6, C7, C8, C9 & C10
Section 31, T1S, R97W, 6th P.M.



SURVEYED BY: D.P. DATE SURVEYED: 01-02-06
DRAWN BY: F.T.M. DATE DRAWN: 02-15-06
SCALE: 1" = 100' REVISED: R.V.C. 09-11-09

Tri State
Land Surveying, Inc.
180 NORTH VERNAL AVE. VERNAL, UTAH 84078
(435) 781-2501

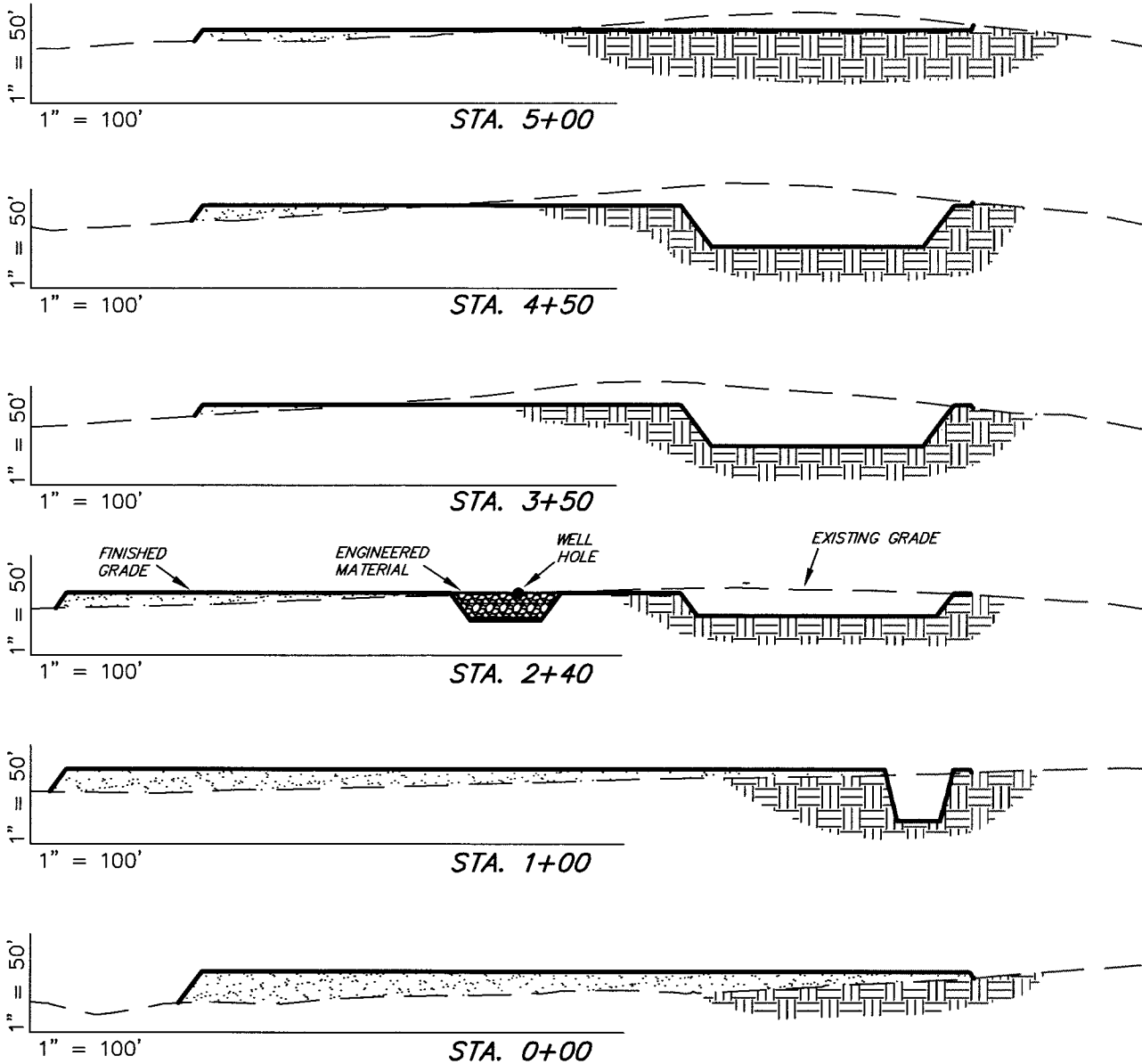
SHEET
2
OF 9

EXXON MOBIL CORPORATION

FIGURE #2

CROSS SECTIONS

WELL PAD (FREEDOM UNIT 197-31C)
FREEDOM UNIT 197-31C1, C2, C3, C4, C5, C6, C7, C8, C9 & C10
Section 31, T1S, R97W, 6th P.M.



NOTES:

- 1.) UNLESS OTHERWISE NOTED, CUT SLOPES ARE AT 1:1 & FILL SLOPES ARE AT 1.5:1.
- 2.) RIG SUBSTRUCTURE TO BE EXCAVATED AND USED TO CONSTRUCT THE LOCATION.
- 3.) RIG SUBSTRUCTURE MATERIAL TO BE REPLACED WITH ENGINEERED MATERIAL TO ALLOW FOR 98% COMPACTION.

ESTIMATED EARTHWORK QUANTITIES (No Shrink or swell adjustments have been used) (Expressed in Cubic Yards)

ITEM	CUT	FILL	6" TOPSOIL	EXCESS
SUBSTRUCTURE	2,020	0	Topsoil is not included in Pad Cut	2,020
PITS	13,280	0		13,280
PAD	10,900	21,190	4,670	-10,290
TOTALS	26,200	21,190	4,670	5,010

SURVEYED BY: D.P. DATE SURVEYED: 01-02-06
DRAWN BY: F.T.M. DATE DRAWN: 02-15-06
SCALE: 1" = 100' REVISED: R.V.C. 09-11-09

Tri State
Land Surveying, Inc.
180 NORTH VERNAL AVE. VERNAL, UTAH 84078
(435) 781-2501

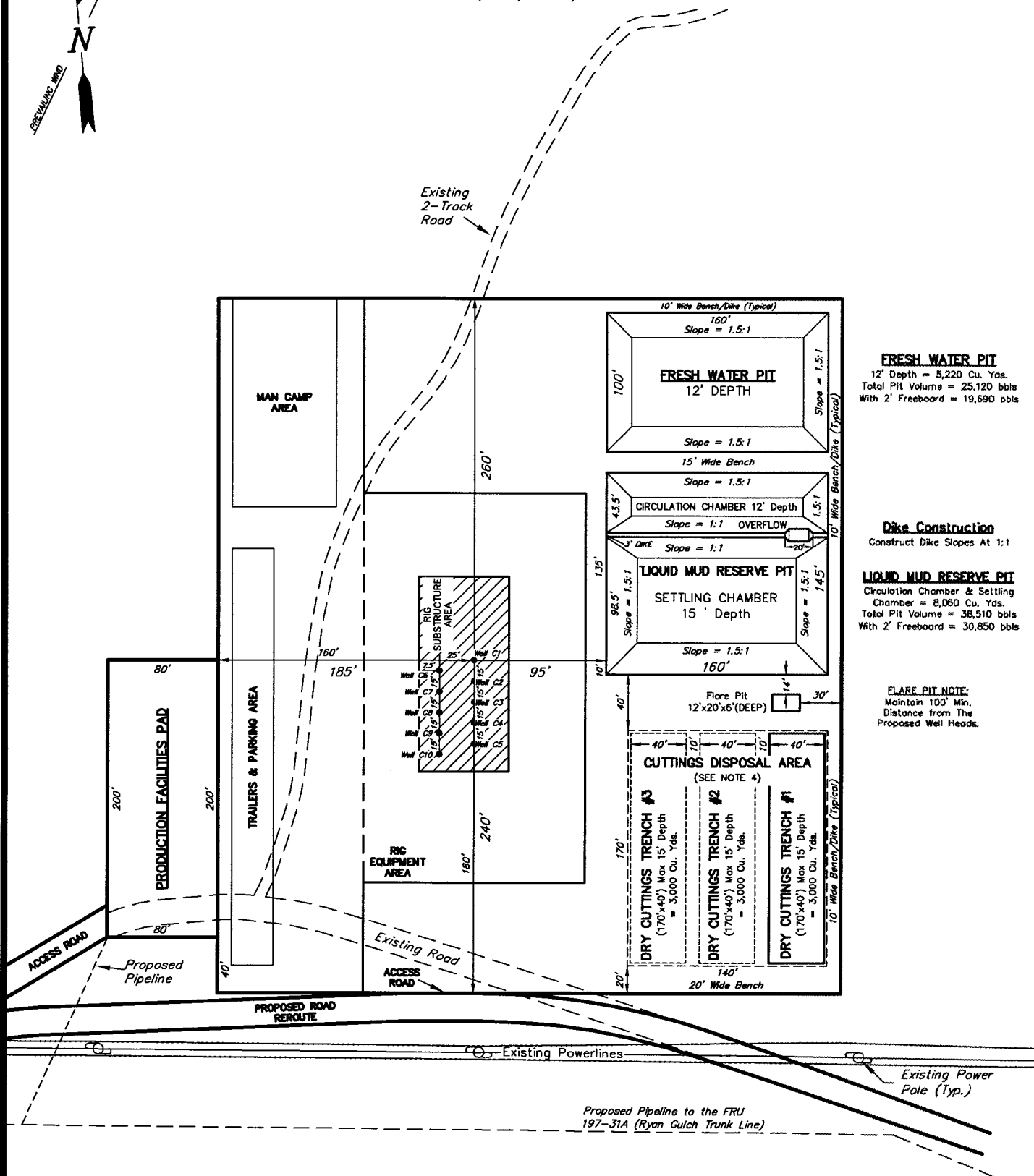
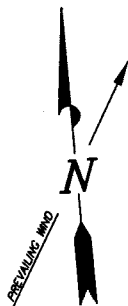
SHEET
3
OF 9

EXXON MOBIL CORPORATION

FIGURE #3

TYPICAL RIG LAYOUT

WELL PAD (FREEDOM UNIT 197-31C)
FREEDOM UNIT 197-31C1, C2, C3, C4, C5, C6, C7, C8, C9 & C10
Section 31, T1S, R97W, 6th P.M.



FRESH WATER PIT
12' Depth = 5,220 Cu. Yds.
Total Pit Volume = 25,120 bbls
With 2' Freeboard = 19,690 bbls

Dike Construction
Construct Dike Slopes At 1:1

LIQUID MUD RESERVE PIT
Circulation Chamber & Settling Chamber = 8,060 Cu. Yds.
Total Pit Volume = 38,510 bbls
With 2' Freeboard = 30,850 bbls

FLARE PIT NOTE:
Maintain 100' Min. Distance from The Proposed Well Heads.

SURVEYED BY: D.P.	DATE SURVEYED: 01-02-06
DRAWN BY: F.T.M.	DATE DRAWN: 02-15-06
SCALE: 1" = 100'	REVISED: R.V.C. 09-11-09

Tri State Land Surveying, Inc.
(435) 781-2501
180 NORTH VERNAL AVE. VERNAL, UTAH 84078

SHEET
4
OF 9

EXXON MOBIL CORPORATION

TYPICAL FINISH GRADING PLAN

WELL PAD (FREEDOM UNIT 197-31C)
FREEDOM UNIT 197-31C1, C2, C3, C4, C5, C6, C7, C8, C9 & C10
Section 31, T1S, R97W, 6th P.M.

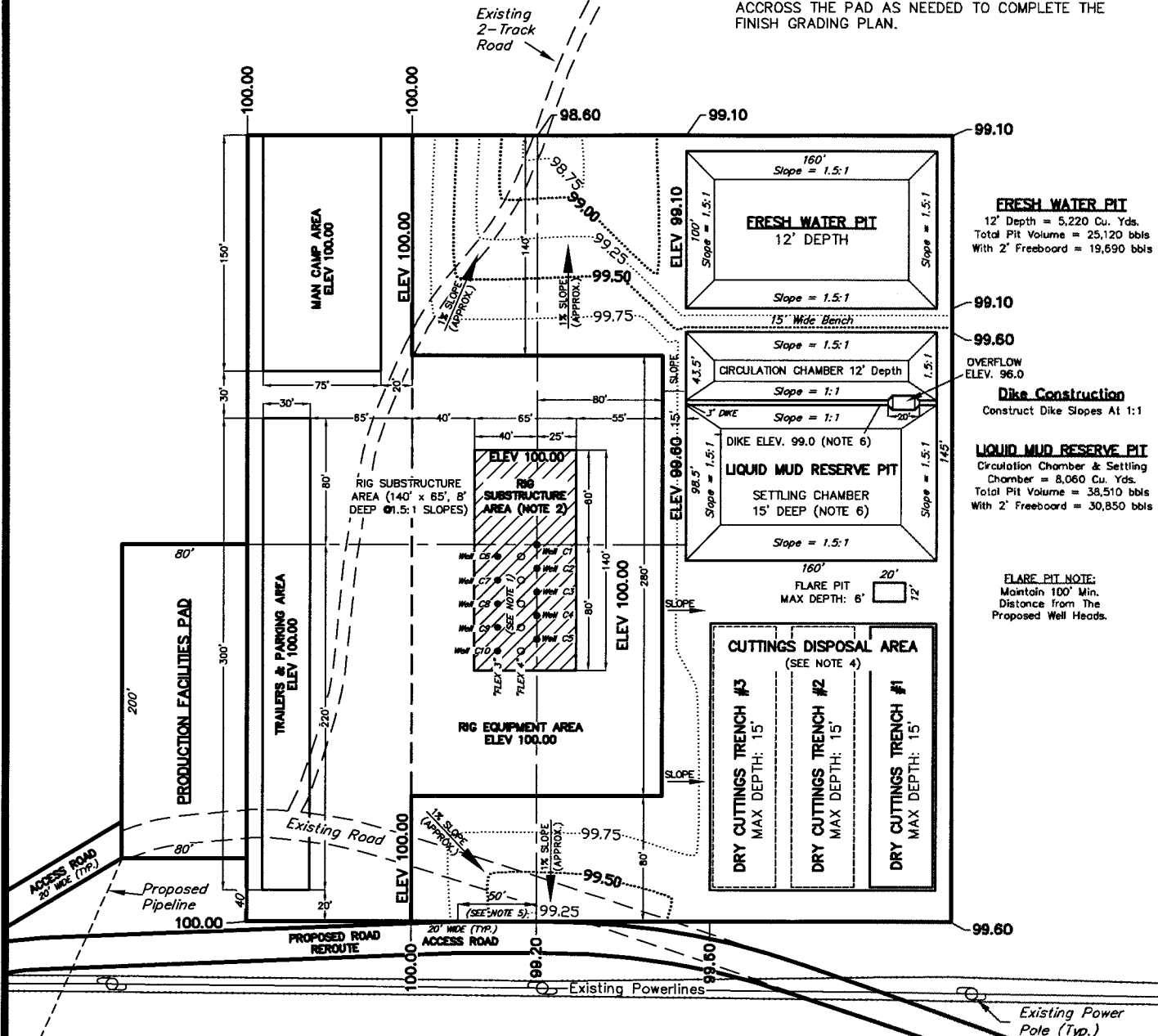
FIGURE #4



CONTOUR AND ELEVATION NOTE:

THE REFERENCE ELEVATION OF 100.00 IS EQUAL TO THE ACTUAL FINISHED GRADE ELEVATION ON THE LOCATION LAYOUT (SHEET 2). ALL OTHER ELEVATIONS ARE RELATIVE TO THIS REFERENCE ELEVATION.

* FINAL GRADING MATERIAL IS TO BE DISTRIBUTED ACROSS THE PAD AS NEEDED TO COMPLETE THE FINISH GRADING PLAN.



Notes

1. Indicated row spacing for H&P "Flex 3" Drill Rig. H&P "Flex 4" will require 10'-0".
2. Rig Substructure Area to be level. Compaction and testing per wellpad construction specification.
3. Perimeter ditching not shown. Grading plan to be coordinated with approved Individual Storm Water Management Plan for each site.
4. Cuttings Trench #1 to be constructed with wellpad. Additional trenches (#2 & #3) will be constructed during drilling operations as required.
5. Indicated spacing may be increased to 75' based upon site topography. Alternate access location may be selected based upon site topography and direction of primary (existing) access.
6. Excavate Reserve Pit to initial 12' depth. Construct diversion dike with 3.0' additional excavation from settling chamber.

SURVEYED BY: D.P.	DATE SURVEYED: 01-02-06
DRAWN BY: F.T.M.	DATE DRAWN: 02-15-06
SCALE: 1" = 100'	REVISED: R.V.C. 09-11-09

Tri State
Land Surveying, Inc.

180 NORTH VERNAL AVE. VERNAL, UTAH 84078

(435) 781-2501

SHEET
5
OF 9