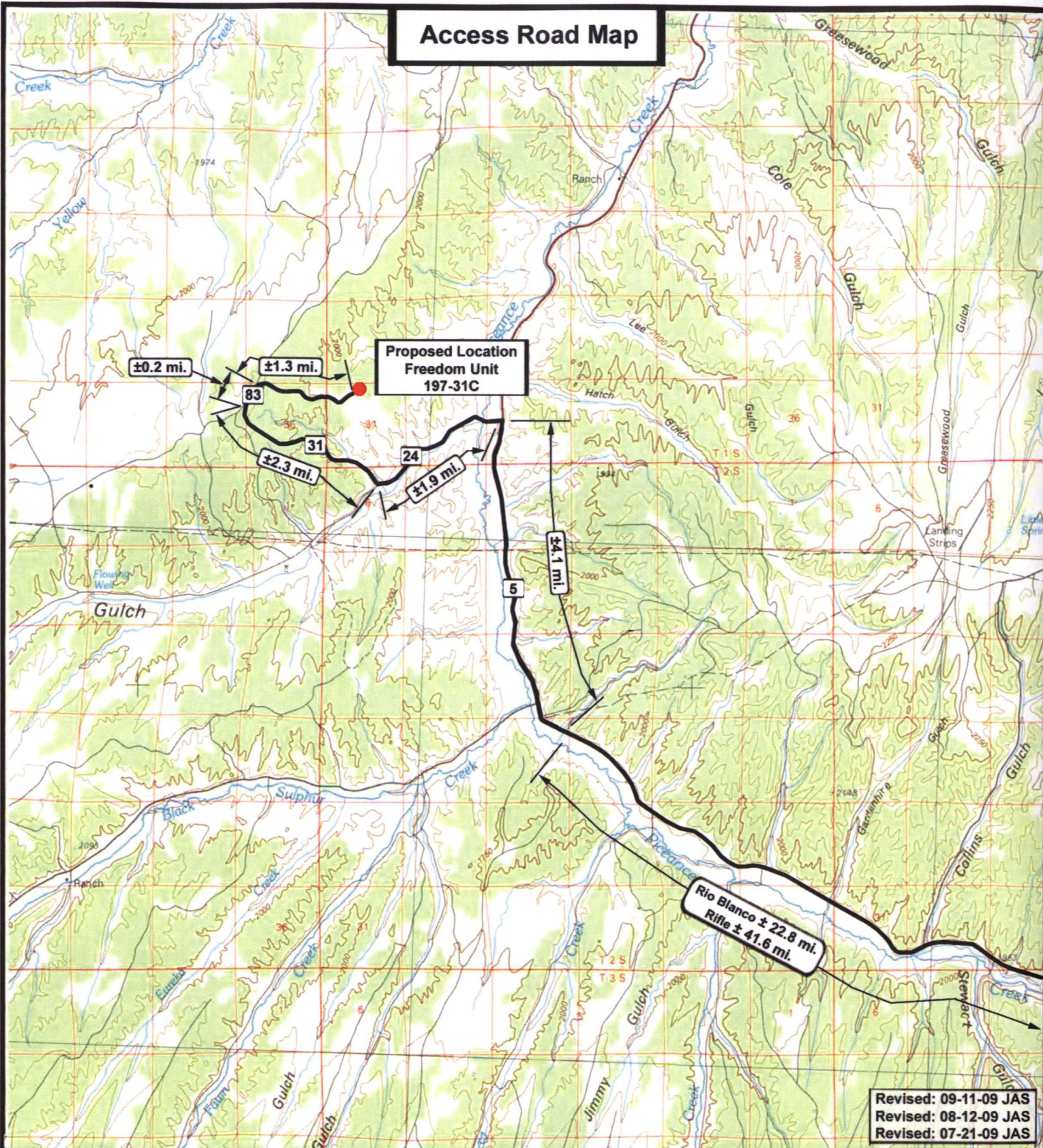


Access Road Map



Revised: 09-11-09 JAS
Revised: 08-12-09 JAS
Revised: 07-21-09 JAS

Exxon Mobil Corporation

**Freedom Unit 197-31C
SEC. 31, T1S, R97W, 6th P.M.**



**Tri-State
Land Surveying Inc.**
(435) 781-2501
180 North Vernal Ave. Vernal, Utah 84078

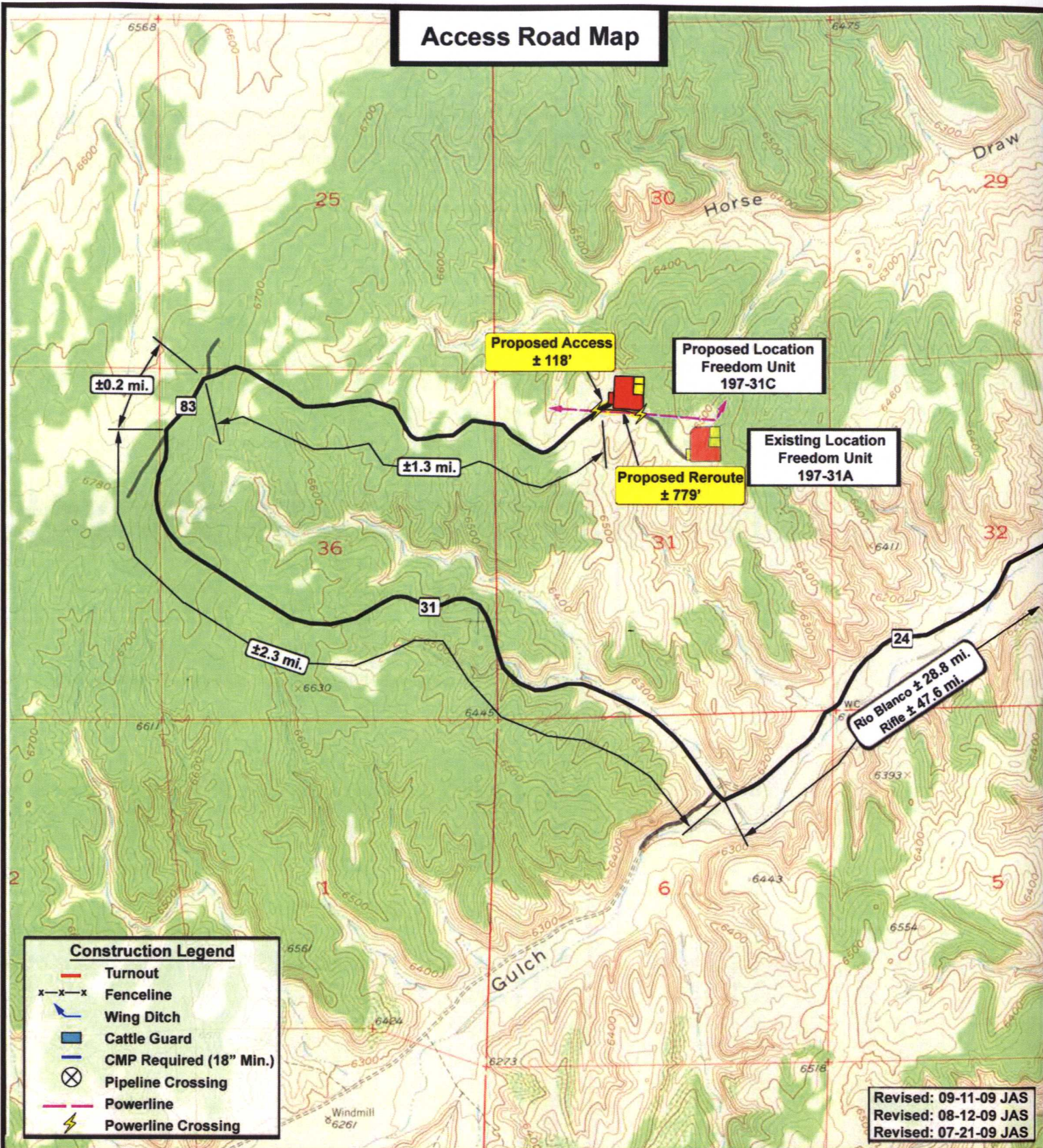
SCALE: 1 : 100,000
DRAWN BY: mw
DATE: 02-21-2006

Legend

Existing Road
Proposed Access

TOPOGRAPHIC MAP
"A"
SHEET 6 OF 9

Access Road Map

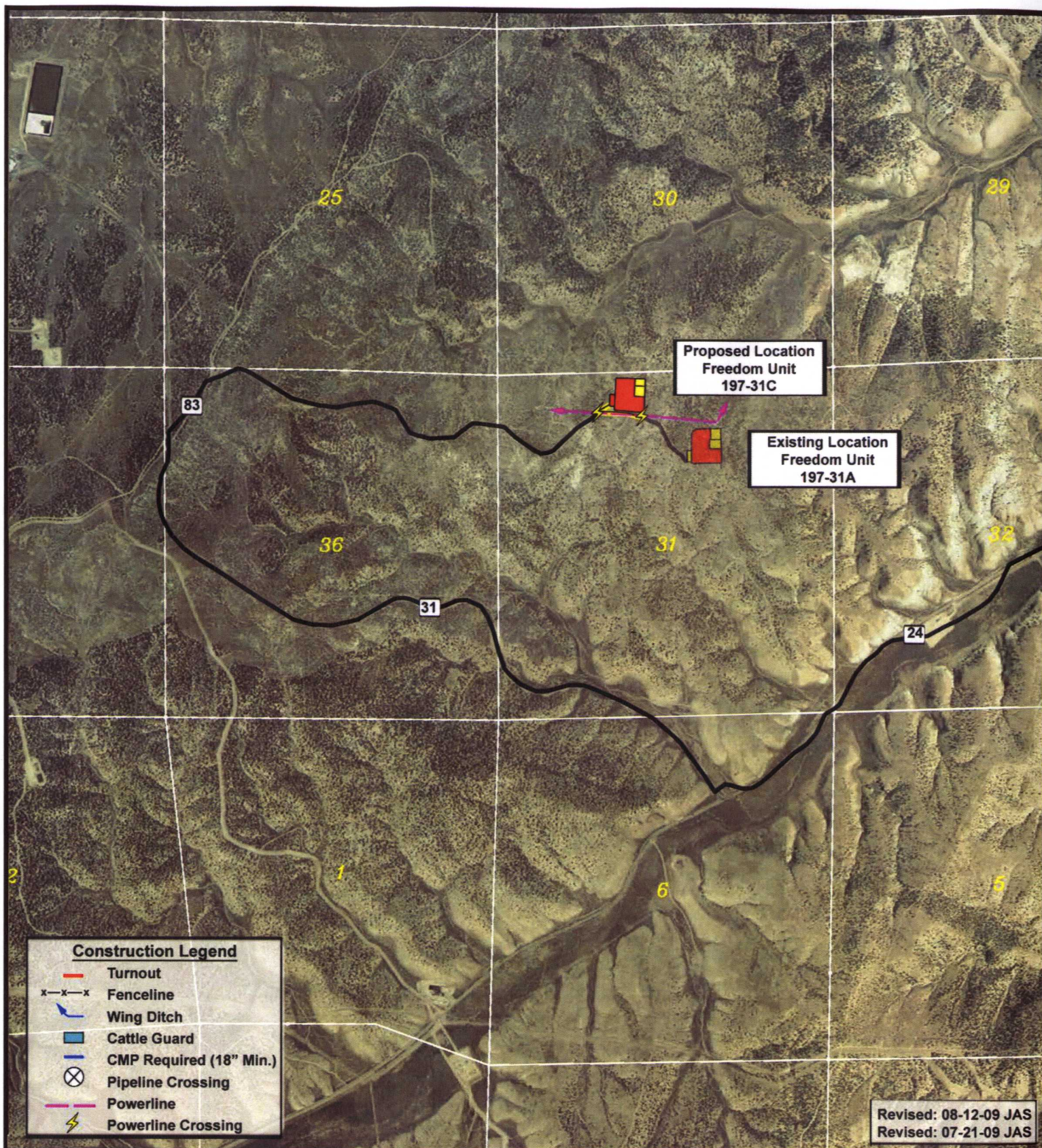


Exxon Mobil Corporation

**Freedom Unit 197-31C
SEC. 31, T1S, R97W, 6th P.M.**

**Tri-State
Land Surveying Inc.**
(435) 781-2501
180 North Vernal Ave. Vernal, Utah 84078

SCALE: 1" = 2,000'
DRAWN BY: mw
DATE: 02-21-2006



Revised: 08-12-09 JAS
Revised: 07-21-09 JAS

Exxon Mobil Corporation

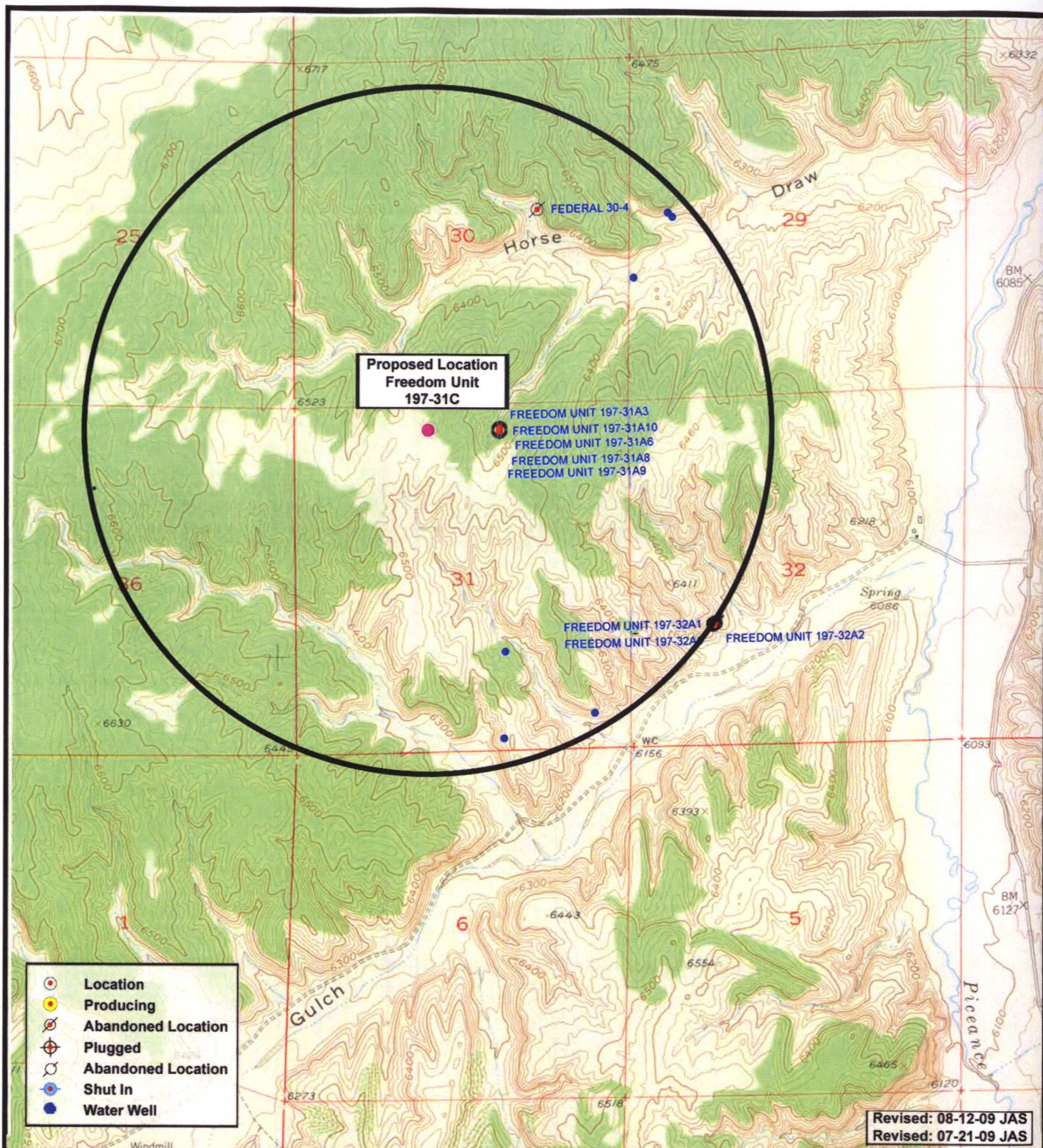
**Freedom Unit 197-31C
SEC. 31, T1S, R97W, 6th P.M.**



*Tri-State
Land Surveying Inc.*
(435) 781-2501
180 North Vernal Ave. Vernal, Utah 84078

SCALE: 1" = 2,000'
DRAWN BY: JAS
DATE: 07-21-2009

Legend	
	Existing Road
	Proposed Access
AERIAL MAP	
"B"	
SHEET	7
	OF 9



Exxon Mobil Corporation

**Freedom Unit 197-31C
SEC. 31, T1S, R97W, 6th P.M.**



**Tri-State
Land Surveying Inc.**
(435) 781-2501
180 North Vernal Ave. Vernal, Utah 84078

SCALE: 1" = 2,000'

DRAWN BY: mw

DATE: 02-21-2006

Legend

● Location
○ One-Mile Radius

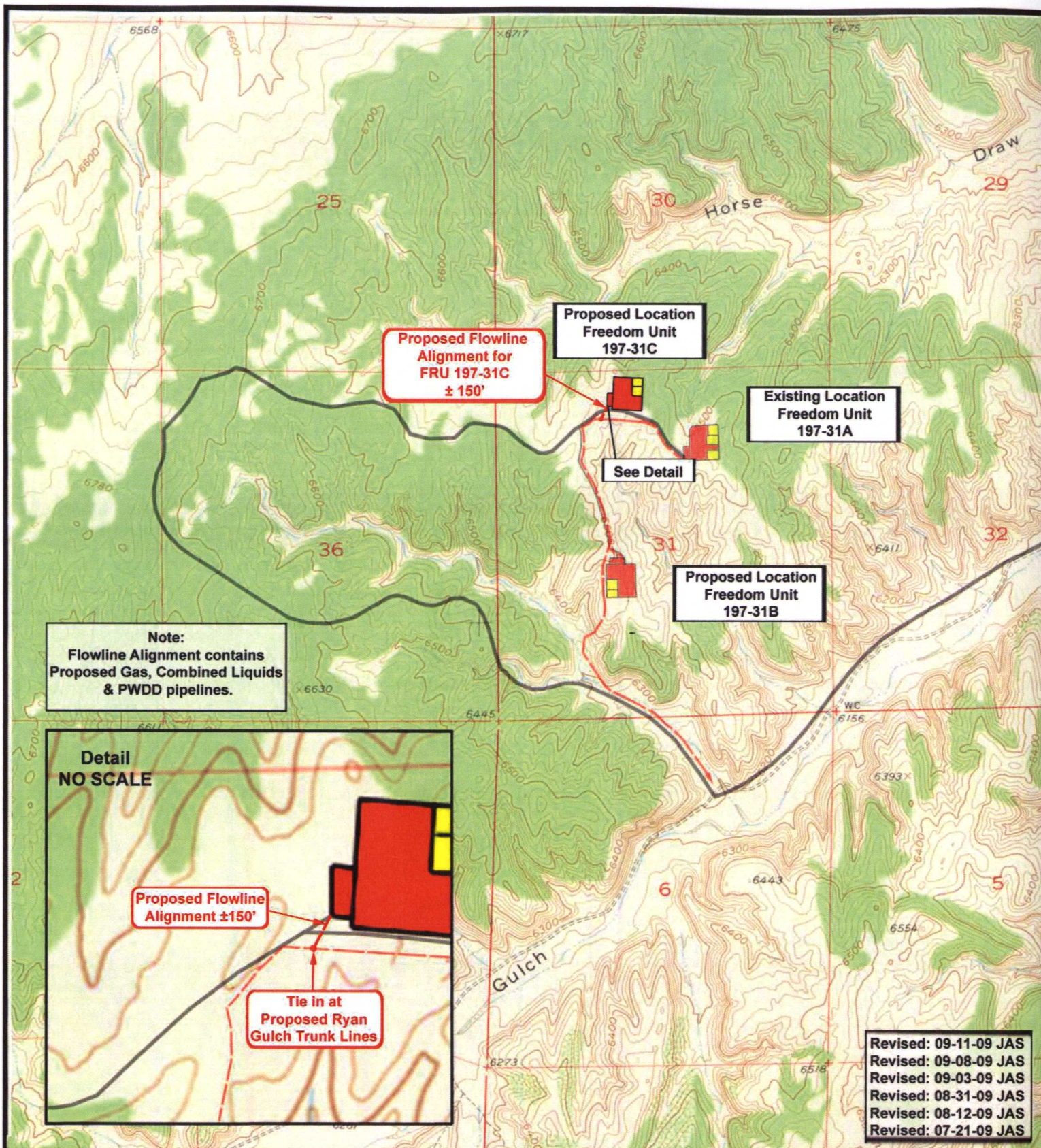
TOPOGRAPHIC MAP

"C"

SHEET

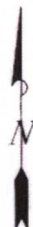
8

OF 9



Exxon Mobil Corporation

**Freedom Unit 197-31C
SEC. 31, T1S, R97W, 6th P.M.**



**Tri-State
Land Surveying Inc.**
 (435) 781-2501
 180 North Vernal Ave. Vernal, Utah 84078

SCALE: 1" = 2,000'

DRAWN BY: JAS

DATE: 11-04-2008

Legend

— Roads
**- - - Proposed Flowline
Alignment**

TOPOGRAPHIC MAP

"D"

SHEET

9

OF 9