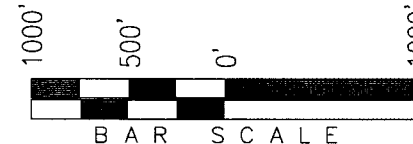


(See Sheet 1hh)
Bottom of Hole

T1S, R97W, 6th P.M.

Exxon Mobil Corporation

WELL LOCATION, FREEDOM UNIT 197-31C8,
LOCATED AS SHOWN IN THE NE 1/4 NW 1/4
(LOT 7) OF SECTION 31, T1S, R97W, 6th P.M.,
RIO BLANCO COUNTY, COLORADO.



◆ = SECTION CORNERS LOCATED

BASIS OF BEARINGS & BASIS OF ELEVATION

BASIS OF BEARINGS IS A LINE BETWEEN MAGNOLIA & MEYERS TRIANGULATION STATION GRID COORDINATES WHICH IS ASSUMED TO BEAR S82°36'07"E.

BASIS OF ELEVATION IS MAGNOLIA TRIANGULATION STATION LOCATED IN THE NW 1/4 OF SECTION 9, T2S, R96W, 6th P.M. REPORTED FROM THE NATIONAL GEODETIC SURVEY (NAVD 88). ELEVATION IS REPORTED AS BEING 7529 FEET.

NOTES:

1. Well footages are measured at right angles to the Section Lines.
2. Bearings are based on Global Positioning Satellite observations.
3. G.P.S. Operator: D. PETTY, (PDOP) = 2.6

THIS IS TO CERTIFY THAT THE ABOVE PLAT WAS PREPARED FROM FIELD NOTES OF ACTUAL SURVEY MADE BY ME, OR UNDER MY SUPERVISION AND THAT THE SAME ARE TRUE AND CORRECT TO THE BEST OF MY KNOWLEDGE AND BELIEF.

30125

REGISTERED LAND SURVEYOR
REGISTRATION NO. 1130125
STATE OF COLORADO

TRI STATE LAND SURVEYING & CONSULTING

180 NORTH VERNAL AVE. - VERNAL, UTAH 84078
(435) 781-2501

DATE SURVEYED:

01-02-06

SURVEYED BY: D.P.

DATE DRAWN:

02-15-06

DRAWN BY: D.COX

REVISED:

02-26-07

SCALE: 1" = 1000'

SHEET

1h

OF 8

CO-NORTH NAD 83 (SURFACE LOCATION)

LATITUDE = 39°55'33.35" (39.925930)
LONGITUDE = 108°19'34.00" (108.326111)

STATE PLANE COORDINATES

N: = 1228491.344 E: = 2207529.220

CO-NORTH NAD 27 (SURFACE LOCATION)

LATITUDE = 39°55'33.45" (39.925958)
LONGITUDE = 108°19'31.68" (108.325466)

STATE PLANE COORDINATES

N: = 228495.061 E: = 1207689.344

FROM SURFACE LOCATION TO NEAREST:

TOWN/COMMUNITY: NE 19.1 MILES TO MEEKER

UNIT BOUNDARY: SLY ±4,856' TO BOUNDARY

UNIT BOUNDARY: WLY ±1,972' TO BOUNDARY

LEASE BOUNDARY: SLY ±2,220' TO BOUNDARY

LEASE BOUNDARY: WLY ±1,972' TO BOUNDARY

EXISTING WELL: NELY ±3,119' TO 30-4 FEDERAL

N01°29'27"E - 2641.60' (Meas.)

N01°31'46"E - 2631.22' (Meas.)

1939 G.L.O.
Brass Cap

LOT 8

LOT 7

LOT 9

LOT 10

LOT 11

LOT 12

LOT 16

LOT 15

LOT 14

LOT 13

LOT 19

LOT 20

1938 G.L.O.
Brass Cap

LOT 17

LOT 18

1938 G.L.O.
Brass Cap

33.00' (G.L.O.)

N89°42'39"W - 2566.52' (Meas.)

N89°51'59"W - 2592.55' (Meas.)

WC
2938 G.L.O.
Brass Cap

N01°27'04"E - 2633.68' (Meas.)

N01°30'51"E - 2638.52' (Meas.)

1939/1982
G.L.O.
Brass Cap

WELL LOCATION:
FREEDOM UNIT 197-31C8
ELEV. UNGRADED GROUND = 6538.2'

Lease Boundary

31

LOT 5

LOT 6

N89°52'54"W - 2561.85' (Meas.)

1939 G.L.O.
Brass Cap

N89°40'58"W
2561.71' (Meas.)

Top of Hole

1972'

N65°07'49"W
1322.41'

415'

T1S, R97W, 6th P.M.

Exxon Mobil Corporation

TARGET BOTTOM HOLE, FREEDOM UNIT
197-31C8, LOCATED AS SHOWN IN THE SW 1/4
SW 1/4 (LOT 17) OF SECTION 30, T1S, R97W,
6th P.M., RIO BLANCO COUNTY, COLORADO.



◆ = SECTION CORNERS LOCATED

BASIS OF BEARINGS & BASIS OF ELEVATION

BASIS OF BEARINGS IS A LINE BETWEEN MAGNOLIA & MEYERS TRIANGULATION STATION GRID COORDINATES WHICH IS ASSUMED TO BEAR S82°36'07"E.

BASIS OF ELEVATION IS MAGNOLIA TRIANGULATION STATION LOCATED IN THE NW 1/4 OF SECTION 9, T2S, R96W, 6th P.M. REPORTED FROM THE NATIONAL GEODETIC SURVEY (NAVD 88). ELEVATION IS REPORTED AS BEING 7529 FEET.

NOTES:

1. Well footages are measured at right angles to the Section Lines.
2. Bearings are based on Global Positioning Satellite observations.

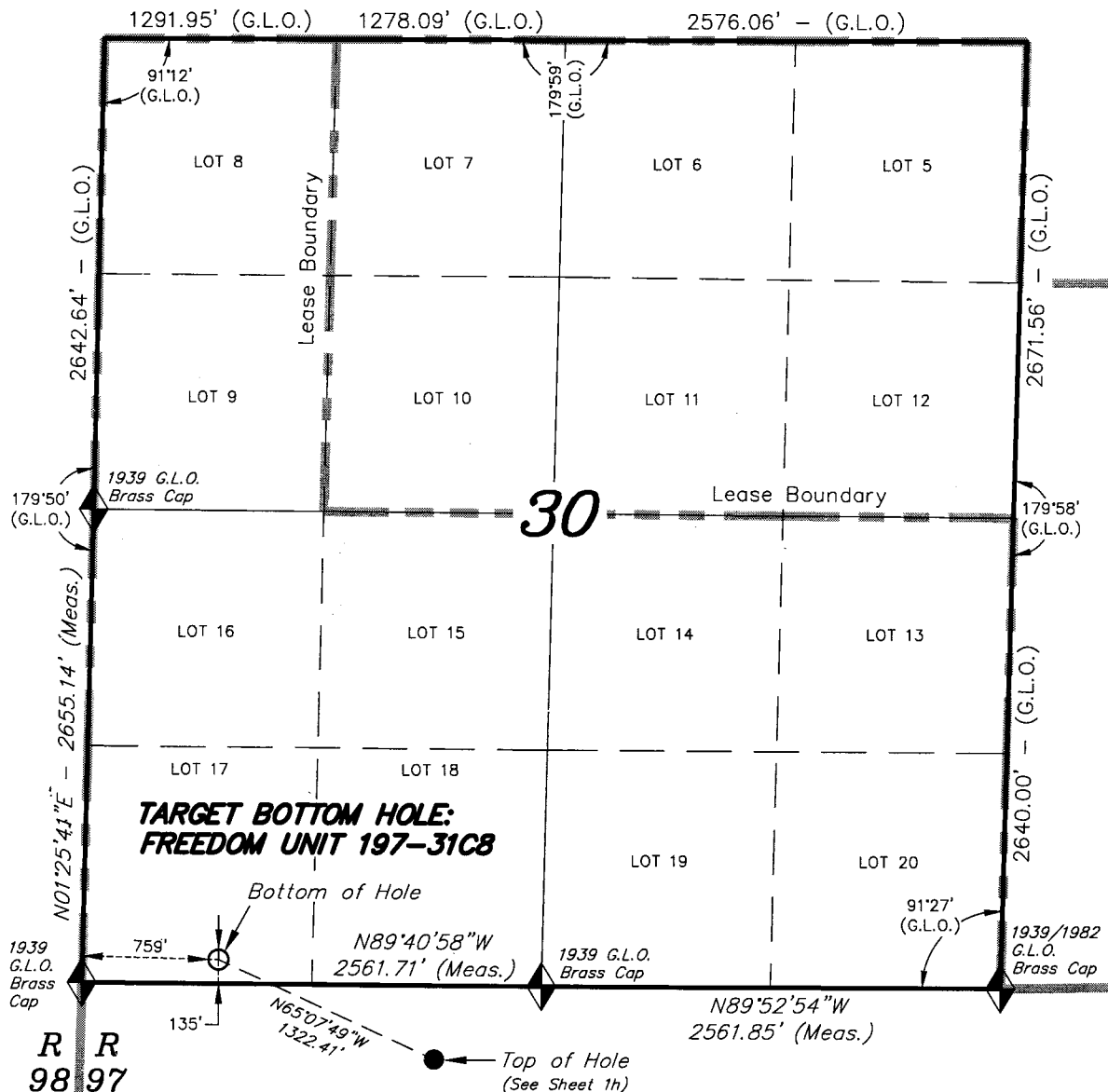
THIS IS TO CERTIFY THAT THE ABOVE WAS PREPARED FROM FIELD NOTES OF ACTUAL SURVEY MADE BY ME, OR UNDER MY SUPERVISION AND THAT THE SAME ARE TRUE AND CORRECT TO THE BEST OF MY KNOWLEDGE AND BELIEF.

REGISTERED LAND SURVEYOR
REGISTRATION NO. 30125
STATE OF COLORADO

TRI STATE LAND SURVEYING & CONSULTING

180 NORTH VERNAL AVE. - VERNAL, UTAH 84078
(435) 781-2501

DATE SURVEYED: 01-02-06	SURVEYED BY: D.P.	SHEET 1hh OF 8
DATE DRAWN: 02-16-06	DRAWN BY: D.COX	
REVISED: 02-26-07	SCALE: 1" = 1000'	

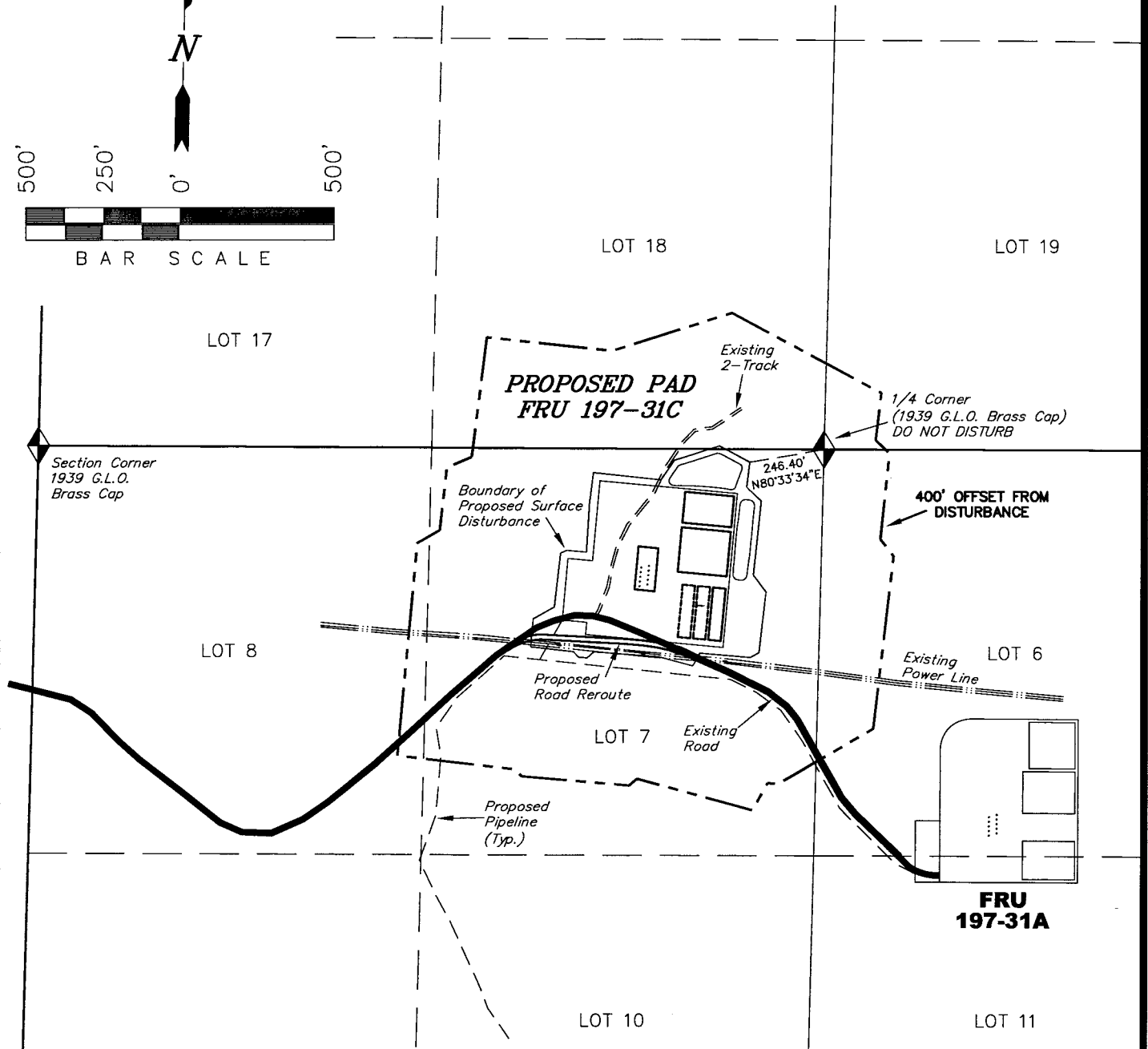
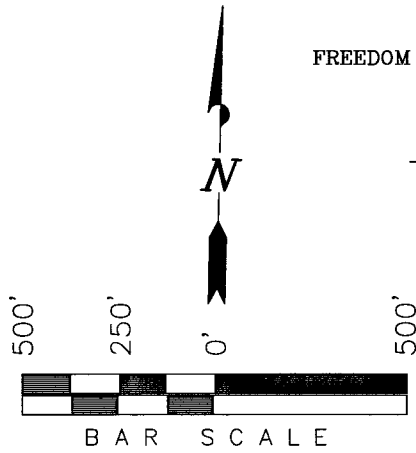


CO-NORTH NAD 83 (BOTTOM HOLE)	FROM TARGET BOTTOM HOLE TO NEAREST:
LATITUDE = 39°55'38.46" (39.927350)	UNIT BOUNDARY: SLY ±5,405' TO BOUNDARY
LONGITUDE = 108°19'49.61" (108.330448)	UNIT BOUNDARY: WLY ±759' TO BOUNDARY
STATE PLANE COORDINATES	LEASE BOUNDARY: SLY ±2,773' TO BOUNDARY
N: = 1229050.299 E: = 2206329.864	LEASE BOUNDARY: WLY ±759' TO BOUNDARY
CO-NORTH NAD 27 (BOTTOM HOLE)	
LATITUDE = 39°55'38.56" (39.927378)	
LONGITUDE = 108°19'47.29" (108.329804)	
STATE PLANE COORDINATES	
N: = 229051.000 E: = 1206490.000	

Exxon Mobil Corporation

ADDENDUM TO LEGAL PLATS FOR

WELL PAD (FREEDOM CREEK UNIT 197-31C)
FREEDOM CREEK UNIT 197-31C1, C2, C3, C4, C5, C6, C7, C8, C9 & C10
Section 31, T1S, R97W, 6th P.M.



SURFACE USE NOTE:
Surface use of the well site is
grazing. Vegetation
consists mainly of Cedar Trees,
Sagebrush & Native Grasses.

Sec 31

Distances from Well Heads

WELL	BUILDING	ABOVE GROUND UTILITY	PUBLIC ROAD	RAILROAD
C1	N78°W 7588'	S06°W 277.70'	S22°W 210.70'	S28°E 35 Miles
C2	N78°W 7588'	S06°W 262.72'	S22°W 196.40'	S28°E 35 Miles
C3	N78°W 7588'	S06°W 247.80'	S22°W 182.11'	S28°E 35 Miles
C4	N78°W 7588'	S06°W 232.75'	S22°W 167.73'	S28°E 35 Miles
C5	N78°W 7588'	S06°W 217.72'	S22°W 153.37'	S28°E 35 Miles
C6	N78°W 7588'	S06°W 270.04'	S22°W 196.29'	S28°E 35 Miles
C7	N78°W 7588'	S06°W 254.96'	S22°W 181.87'	S28°E 35 Miles
C8	N78°W 7588'	S06°W 240.01'	S22°W 167.57'	S28°E 35 Miles
C9	N78°W 7588'	S06°W 224.98'	S22°W 153.21'	S28°E 35 Miles
C10	N78°W 7588'	S06°W 209.96'	S22°W 138.84'	S28°E 35 Miles

SURVEYED BY: D.P. SURVEY DATE: 01-02-06
DRAWN BY: F.T.M. DATE DRAWN: 09-22-09
SCALE: 1" = 500' REVISED: F.T.M. 09-24-09

Tri State
Land Surveying, Inc.
180 NORTH VERNAL AVE. VERNAL, UTAH 84078
(435) 781-2501

**SHEET
2k
OF 12**