

**T1S, R97W, 6th P.M.**

**Exxon Mobil Corporation**

WELL LOCATION, FREEDOM UNIT 197-31C9,  
LOCATED AS SHOWN IN THE NE 1/4 NW 1/4  
(LOT 7) OF SECTION 31, T1S, R97W, 6th P.M.,  
RIO BLANCO COUNTY, COLORADO.



◆ = SECTION CORNERS LOCATED

**BASIS OF BEARINGS & BASIS OF ELEVATION**

BASIS OF BEARINGS IS A LINE BETWEEN MAGNOLIA & MEYERS TRIANGULATION STATION GRID COORDINATES WHICH IS ASSUMED TO BEAR S82°36'07"E.

BASIS OF ELEVATION IS MAGNOLIA TRIANGULATION STATION LOCATED IN THE NW 1/4 OF SECTION 9, T2S, R96W, 6th P.M. REPORTED FROM THE NATIONAL GEODETIC SURVEY (NAVD 88). ELEVATION IS REPORTED AS BEING 7529 FEET.

**NOTES:**

1. Well footages are measured at right angles to the Section Lines.
2. Bearings are based on Global Positioning Satellite observations.
3. G.P.S. Operator: D. PETTY, (PDOP) = 2.5

THIS IS TO CERTIFY THAT THE ABOVE WAS PREPARED FROM FIELD NOTES OF ACTUAL SURVEY MADE BY ME, OR UNDER MY SUPERVISION AND THAT THE SAME ARE TRUE AND CORRECT TO THE BEST OF MY KNOWLEDGE AND BELIEF.

# 30125

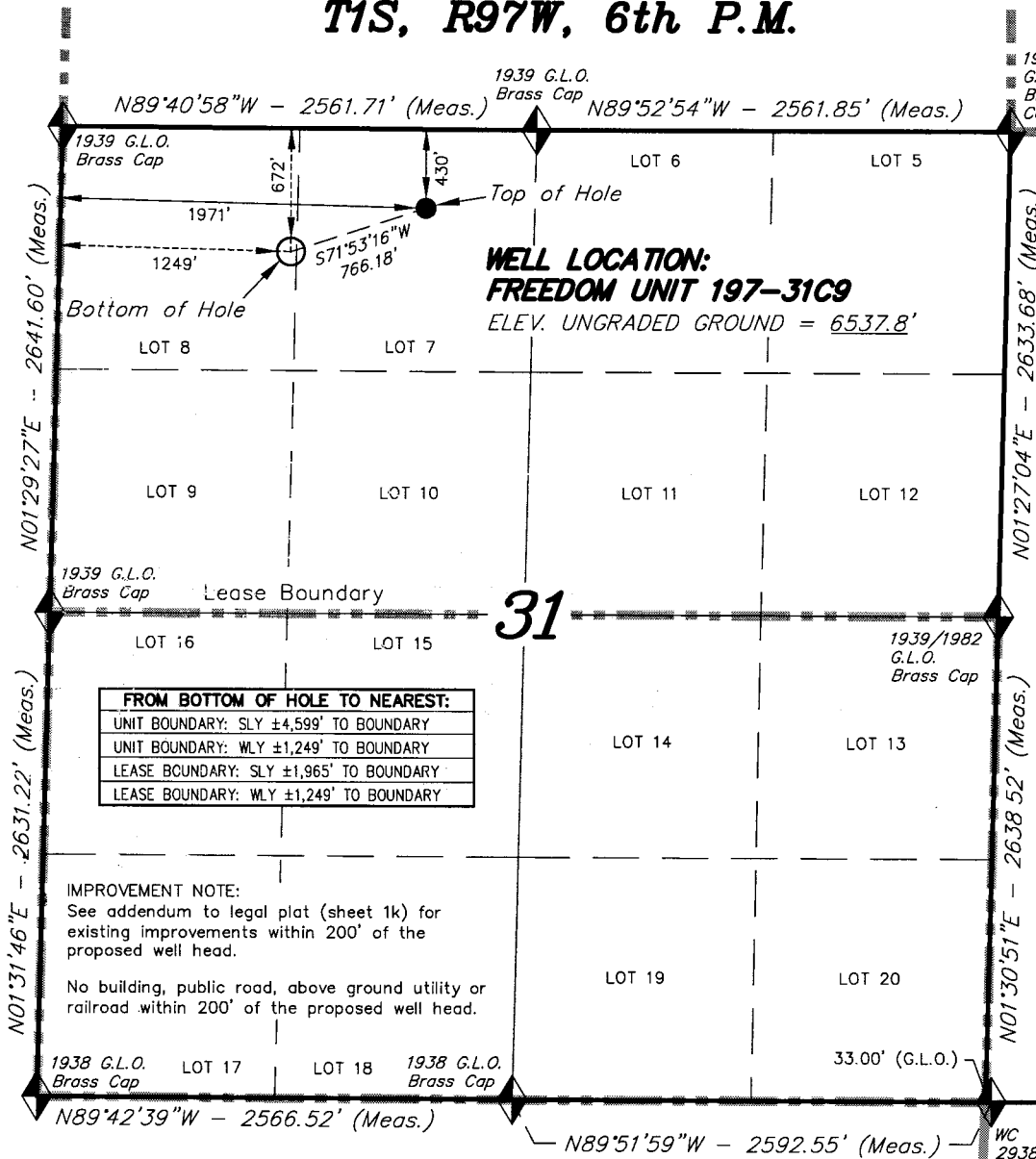
REGISTERED LAND SURVEYOR  
REGISTRATION NO. 119012  
STATE OF COLORADO

**TRI STATE LAND SURVEYING & CONSULTING**

180 NORTH VERNAL AVE. - VERNAL, UTAH 84078  
(435) 781-2501

DATE SURVEYED: 01-02-06	SURVEYED BY: D.P.	SHEET <b>1i</b> OF 8
DATE DRAWN: 02-15-06	DRAWN BY: D.COX	
REVISED: 02-26-07	SCALE: 1" = 1000'	

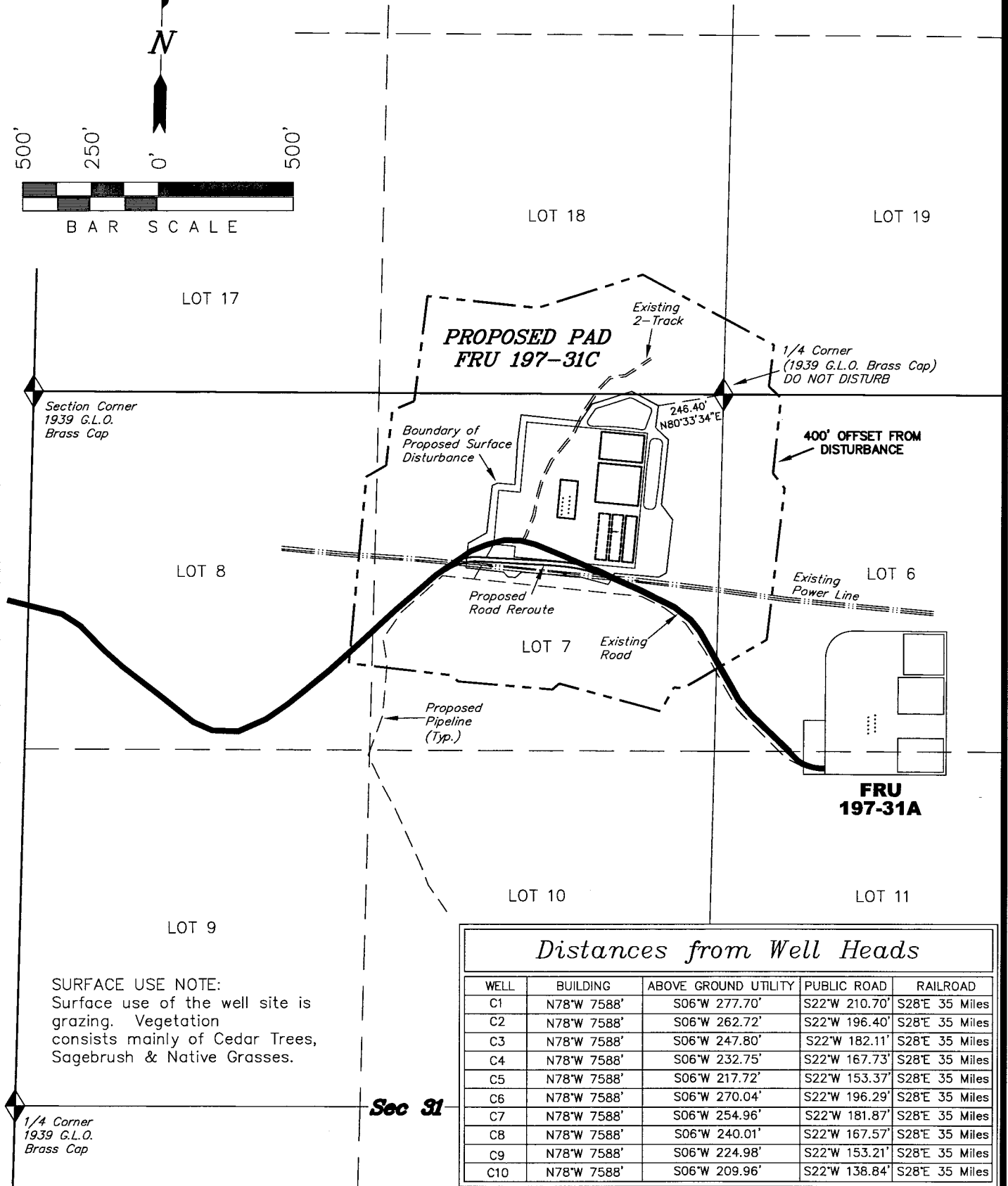
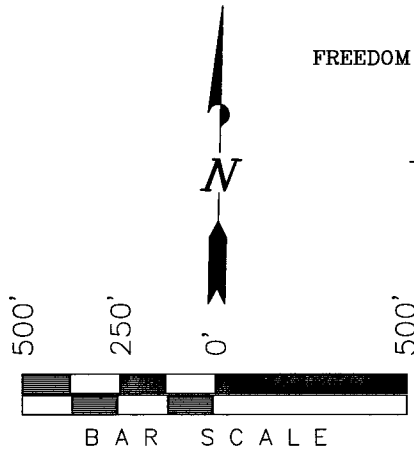
CO-NORTH NAD 83 (SURFACE LOCATION)		CO-NORTH NAD 83 (BOTTOM HOLE)		FROM SURFACE LOCATION TO NEAREST:	
LATITUDE = 39°55'33.20" (39.925889)		LATITUDE = 39°55'30.62" (39.925172)		TOWN/COMMUNITY: NE 19.1 MILES TO MEEKER	
LONGITUDE = 108°19'34.01" (108.326114)		LONGITUDE = 108°19'43.25" (108.328681)		UNIT BOUNDARY: SLY ±4,841' TO BOUNDARY	
STATE PLANE COORDINATES		STATE PLANE COORDINATES		UNIT BOUNDARY: WLY ±1,971' TO BOUNDARY	
N: = 1228479.392	E: = 2207527.823	N: = 1228241.287	E: = 2206799.867	LEASE BOUNDARY: SLY ±2,205' TO BOUNDARY	
CO-NORTH NAD 27 (SURFACE LOCATION)		CO-NORTH NAD 27 (BOTTOM HOLE)		LEASE BOUNDARY: WLY ±1,971' TO BOUNDARY	
LATITUDE = 39°55'33.30" (39.925916)		LATITUDE = 39°55'30.72" (39.925199)		EXISTING WELL: NELY ±3,132' TO 30-4 FEDERAL	
LONGITUDE = 108°19'31.69" (108.325470)		LONGITUDE = 108°19'40.93" (108.328037)			
STATE PLANE COORDINATES		STATE PLANE COORDINATES			
N: = 228480.109	E: = 1207687.947	N: = 228242.000	E: = 1206960.000		



# Exxon Mobil Corporation

## ADDENDUM TO LEGAL PLATS FOR

WELL PAD (FREEDOM CREEK UNIT 197-31C)  
FREEDOM CREEK UNIT 197-31C1, C2, C3, C4, C5, C6, C7, C8, C9 & C10  
Section 31, T1S, R97W, 6th P.M.



SURVEYED BY: D.P. SURVEY DATE: 01-02-06  
DRAWN BY: F.T.M. DATE DRAWN: 09-22-09  
SCALE: 1" = 500' REVISED: F.T.M. 09-24-09

**Tri State**  
Land Surveying, Inc.  
180 NORTH VERNAL AVE. VERNAL, UTAH 84078  
(435) 781-2501

**SHEET**  
**2k**  
**OF 12**

**Exxon Mobil Corporation**  
**Freedom Unit 197-31C**  
**Section 31 T1S, R97W, 6<sup>th</sup> P.M.**

Beginning at the city of Rifle Colorado, proceed in a Northerly direction on highway 13 approximately 18.8 miles to the junction at Rio Blanco; turn left and proceed in a northwesterly direction approximately 26.9 miles to the junction of this road and County Road 24; turn left and proceed in a easterly direction approximately 1.9 miles, to the junction of County Road 24 and County Road 31: Turn right and proceed Northwesterly on County Road 31 for approximately 2.3 miles to the junction of this road and County Road 83; Turn right and proceed northeasterly along County Road 83 for approximately 0.2 miles to the beginning of the access for the Freedom Unit 197-31A; turn right and proceed in a easterly direction approximately 1.3 Miles to the proposed access for the Freedom Unit 197-31C Well pad. Turn left and proceed northeasterly approximately 118' to the Proposed location for the Freedom Unit 197-31C Well pad.