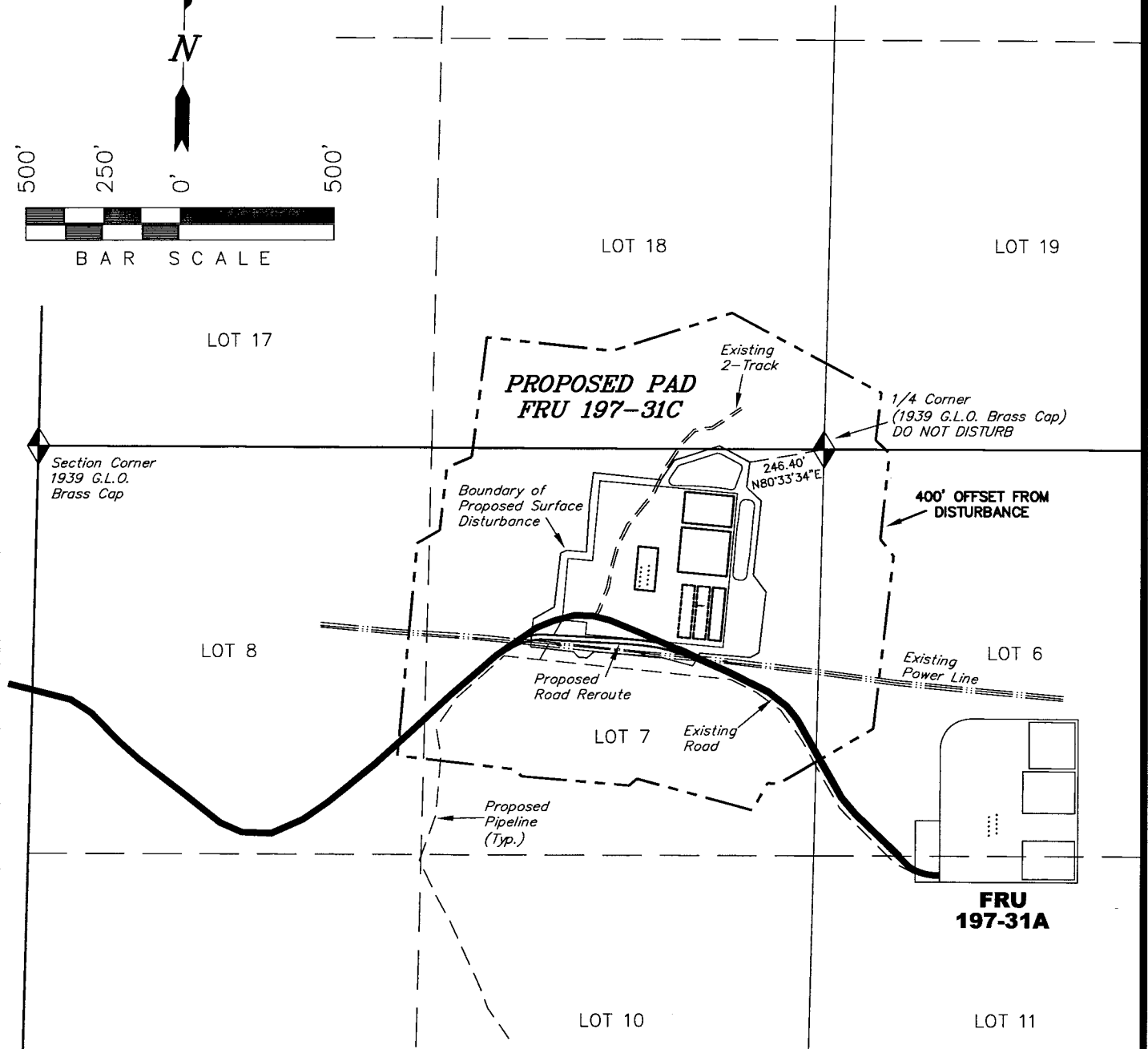
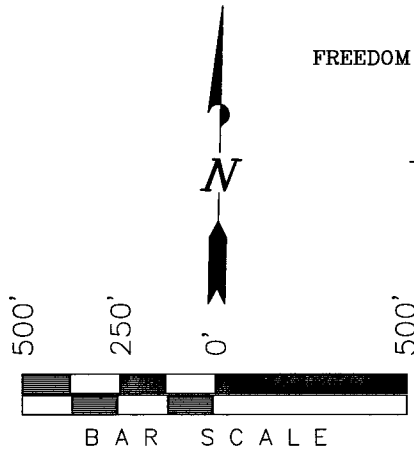


CO-NORTH NAD 83 (SURFACE LOCATION)		CO-NORTH NAD 83 (BOTTOM HOLE)		FROM SURFACE LOCATION TO NEAREST:	
LATITUDE = 39°55'33.20" (39.925889)		LATITUDE = 39°55'30.62" (39.925172)		TOWN/COMMUNITY: NE 19.1 MILES TO MEEKER	
LONGITUDE = 108°19'34.01" (108.326114)		LONGITUDE = 108°19'43.25" (108.328681)		UNIT BOUNDARY: SLY ±4,841' TO BOUNDARY	
STATE PLANE COORDINATES		STATE PLANE COORDINATES		UNIT BOUNDARY: WLY ±1,971' TO BOUNDARY	
N: = 1228479.392 E: = 2207527.823		N: = 1228241.287 E: = 2206799.867		LEASE BOUNDARY: SLY ±2,205' TO BOUNDARY	
CO-NORTH NAD 27 (SURFACE LOCATION)		CO-NORTH NAD 27 (BOTTOM HOLE)		LEASE BOUNDARY: WLY ±1,971' TO BOUNDARY	
LATITUDE = 39°55'33.30" (39.925916)		LATITUDE = 39°55'30.72" (39.925199)		EXISTING WELL: NELY ±3,132' TO 30-4 FEDERAL	
LONGITUDE = 108°19'31.69" (108.325470)		LONGITUDE = 108°19'40.93" (108.328037)			
STATE PLANE COORDINATES		STATE PLANE COORDINATES			
N: = 228480.09 E: = 1207687.947		N: = 228242.000 E: = 1206960.000			

Exxon Mobil Corporation

ADDENDUM TO LEGAL PLATS FOR

WELL PAD (FREEDOM CREEK UNIT 197-31C)
FREEDOM CREEK UNIT 197-31C1, C2, C3, C4, C5, C6, C7, C8, C9 & C10
Section 31, T1S, R97W, 6th P.M.



SURFACE USE NOTE:
Surface use of the well site is grazing. Vegetation consists mainly of Cedar Trees, Sagebrush & Native Grasses.

Sec 31

1/4 Corner
1939 G.L.O.
Brass Cap

Distances from Well Heads

WELL	BUILDING	ABOVE GROUND UTILITY	PUBLIC ROAD	RAILROAD
C1	N78°W 7588'	S06°W 277.70'	S22°W 210.70'	S28°E 35 Miles
C2	N78°W 7588'	S06°W 262.72'	S22°W 196.40'	S28°E 35 Miles
C3	N78°W 7588'	S06°W 247.80'	S22°W 182.11'	S28°E 35 Miles
C4	N78°W 7588'	S06°W 232.75'	S22°W 167.73'	S28°E 35 Miles
C5	N78°W 7588'	S06°W 217.72'	S22°W 153.37'	S28°E 35 Miles
C6	N78°W 7588'	S06°W 270.04'	S22°W 196.29'	S28°E 35 Miles
C7	N78°W 7588'	S06°W 254.96'	S22°W 181.87'	S28°E 35 Miles
C8	N78°W 7588'	S06°W 240.01'	S22°W 167.57'	S28°E 35 Miles
C9	N78°W 7588'	S06°W 224.98'	S22°W 153.21'	S28°E 35 Miles
C10	N78°W 7588'	S06°W 209.96'	S22°W 138.84'	S28°E 35 Miles

SURVEYED BY: D.P. SURVEY DATE: 01-02-06
DRAWN BY: F.T.M. DATE DRAWN: 09-22-09
SCALE: 1" = 500' REVISED: F.T.M. 09-24-09

Tri State
Land Surveying, Inc.
180 NORTH VERNAL AVE. VERNAL, UTAH 84078
(435) 781-2501

SHEET
2k
OF 12