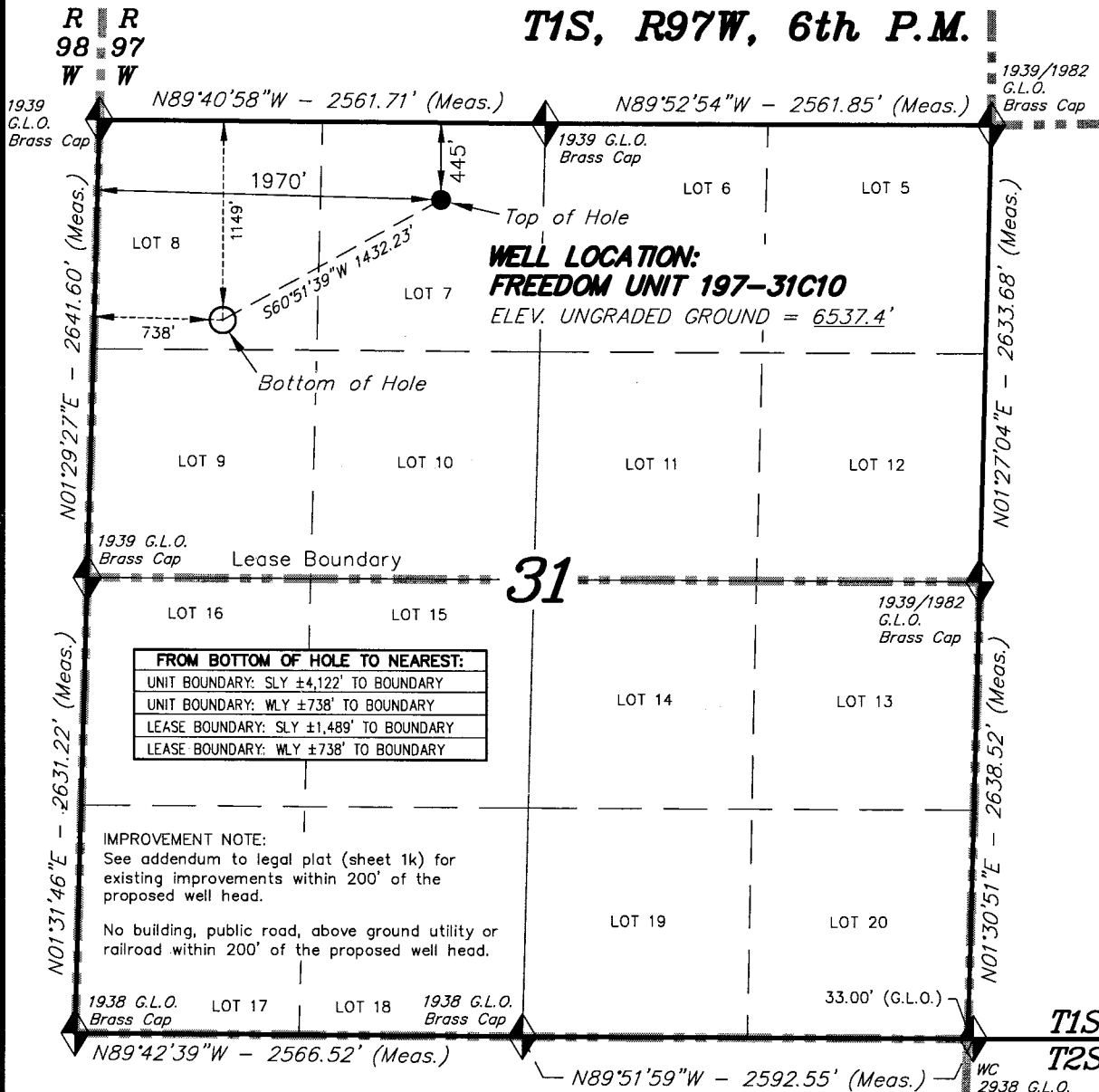


T1S, R97W, 6th P.M.

Exxon Mobil Corporation

WELL LOCATION, FREEDOM UNIT 197-31C10,
LOCATED AS SHOWN IN THE NE 1/4 NW 1/4
(LOT 7) OF SECTION 31, T1S, R97W, 6th P.M.,
RIO BLANCO COUNTY, COLORADO.



◆ = SECTION CORNERS LOCATED

BASIS OF BEARINGS & BASIS OF ELEVATION

BASIS OF BEARINGS IS A LINE BETWEEN MAGNOLIA & MEYERS TRIANGULATION STATION GRID COORDINATES WHICH IS ASSUMED TO BEAR S82°36'07"E.

BASIS OF ELEVATION IS MAGNOLIA TRIANGULATION STATION LOCATED IN THE NW 1/4 OF SECTION 9, T2S, R96W, 6th P.M. REPORTED FROM THE NATIONAL GEODETIC SURVEY (NAVD 88). ELEVATION IS REPORTED AS BEING 7529 FEET.

NOTES:

1. Well footages are measured at right angles to the Section Lines.
2. Bearings are based on Global Positioning Satellite observations.
3. G.P.S. Operator: D. PETTY, (PDOP) = 2.5

THIS IS TO CERTIFY THAT THE ABOVE WAS PREPARED FROM FIELD NOTES OF ACTUAL SURVEY MADE BY ME, OR UNDER MY SUPERVISION AND THAT THE SAME ARE TRUE AND CORRECT TO THE BEST OF MY KNOWLEDGE AND BELIEF.

[Signature]
REGISTERED LAND SURVEYOR
REGISTRATION NO. 190125
STATE OF COLORADO

TRI STATE LAND SURVEYING & CONSULTING

180 NORTH VERNAL AVE. - VERNAL, UTAH 84078
(435) 781-2501

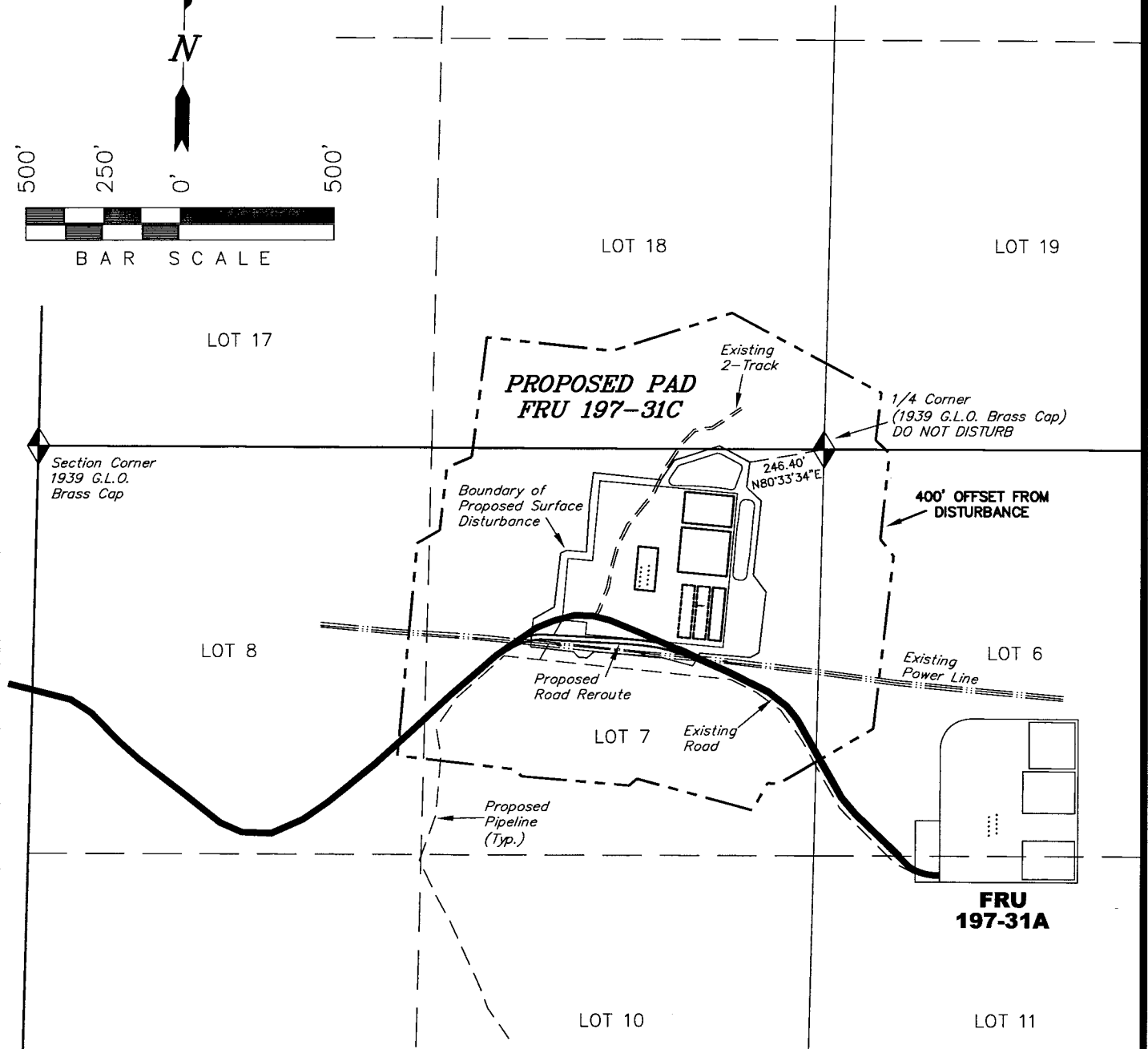
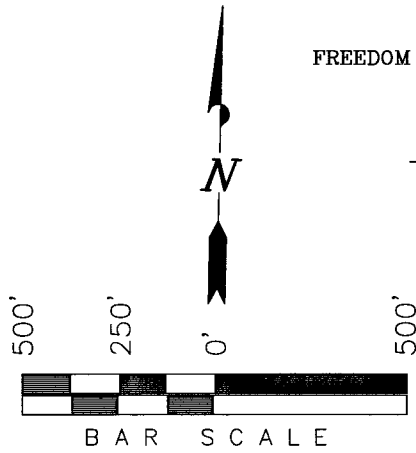
DATE SURVEYED: 01-02-06	SURVEYED BY: D.P.	SHEET 1j OF 8
DATE DRAWN: 02-16-06	DRAWN BY: D.COX	
REVISED: 02-26-07	SCALE: 1" = 1000'	

CO-NORTH NAD 83 (SURFACE LOCATION)	CO-NORTH NAD 83 (BOTTOM HOLE)	FROM SURFACE LOCATION TO NEAREST:
LATITUDE = 39°55'33.05" (39.925847)	LATITUDE = 39°55'25.77" (39.923825)	TOWN/COMMUNITY: NE 19.1 MILES TO MEEKER
LONGITUDE = 108°19'34.02" (108.326117)	LONGITUDE = 108°19'49.78" (108.330495)	UNIT BOUNDARY: SLY ±4,826' TO BOUNDARY
STATE PLANE COORDINATES	STATE PLANE COORDINATES	UNIT BOUNDARY: WLY ±1,970' TO BOUNDARY
N: = 1228464.438 E: = 2207526.382	N: = 1227767.287 E: = 2206275.859	LEASE BOUNDARY: SLY ±2,190' TO BOUNDARY
CO-NORTH NAD 27 (SURFACE LOCATION)	CO-NORTH NAD 27 (BOTTOM HOLE)	LEASE BOUNDARY: WLY ±1,970' TO BOUNDARY
LATITUDE = 39°55'33.15" (39.925875)	LATITUDE = 39°55'25.87" (39.923853)	EXISTING WELL: NELY ±3,145' TO 30-4 FEDERAL
LONGITUDE = 108°19'31.70" (108.325473)	LONGITUDE = 108°19'47.46" (108.329850)	
STATE PLANE COORDINATES	STATE PLANE COORDINATES	
N: = 228465.156 E: = 1207686.506	N: = 227768.000 E: = 1206436.000	

Exxon Mobil Corporation

ADDENDUM TO LEGAL PLATS FOR

WELL PAD (FREEDOM CREEK UNIT 197-31C)
FREEDOM CREEK UNIT 197-31C1, C2, C3, C4, C5, C6, C7, C8, C9 & C10
Section 31, T1S, R97W, 6th P.M.



SURFACE USE NOTE:
Surface use of the well site is
grazing. Vegetation
consists mainly of Cedar Trees,
Sagebrush & Native Grasses.

Sec 31

Distances from Well Heads

WELL	BUILDING	ABOVE GROUND UTILITY	PUBLIC ROAD	RAILROAD
C1	N78°W 7588'	S06°W 277.70'	S22°W 210.70'	S28°E 35 Miles
C2	N78°W 7588'	S06°W 262.72'	S22°W 196.40'	S28°E 35 Miles
C3	N78°W 7588'	S06°W 247.80'	S22°W 182.11'	S28°E 35 Miles
C4	N78°W 7588'	S06°W 232.75'	S22°W 167.73'	S28°E 35 Miles
C5	N78°W 7588'	S06°W 217.72'	S22°W 153.37'	S28°E 35 Miles
C6	N78°W 7588'	S06°W 270.04'	S22°W 196.29'	S28°E 35 Miles
C7	N78°W 7588'	S06°W 254.96'	S22°W 181.87'	S28°E 35 Miles
C8	N78°W 7588'	S06°W 240.01'	S22°W 167.57'	S28°E 35 Miles
C9	N78°W 7588'	S06°W 224.98'	S22°W 153.21'	S28°E 35 Miles
C10	N78°W 7588'	S06°W 209.96'	S22°W 138.84'	S28°E 35 Miles

SURVEYED BY: D.P. SURVEY DATE: 01-02-06
DRAWN BY: F.T.M. DATE DRAWN: 09-22-09
SCALE: 1" = 500' REVISED: F.T.M. 09-24-09

Tri State
Land Surveying, Inc.
180 NORTH VERNAL AVE. VERNAL, UTAH 84078
(435) 781-2501

SHEET
2k
OF 12