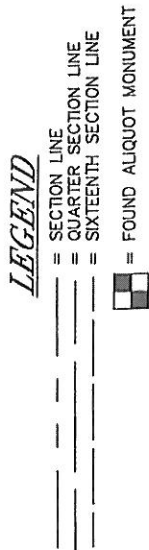


SRC STATE 16P

WELL LOCATION

NE $\frac{1}{4}$ SW $\frac{1}{4}$ SEC. 16, T.4N., R.67W.

See Visible Improvements Exhibit
for all visible improvements within
400' of wellhead.

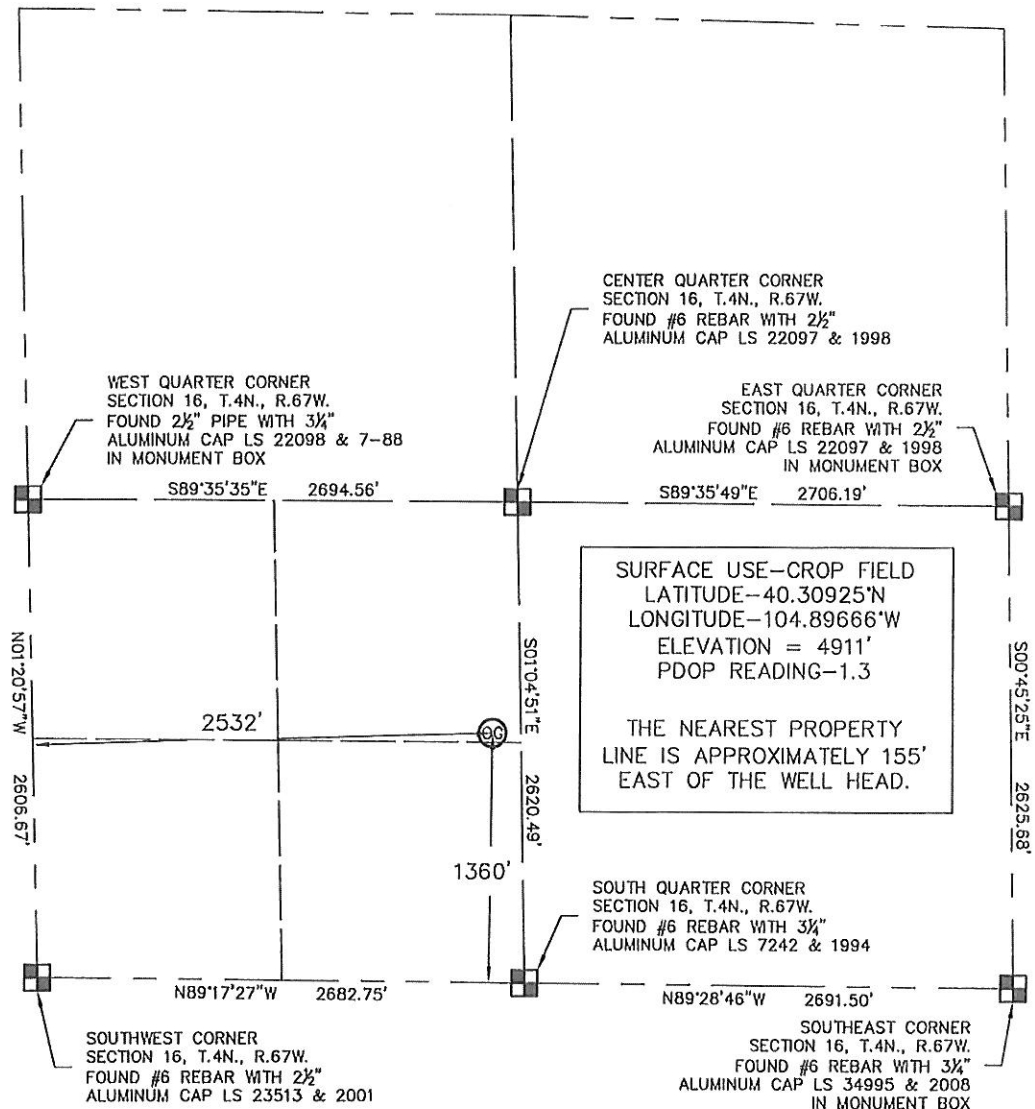


All distances to section lines
are measured perpendicular to
said section lines.

Ground elevation shown is
approximate and is based on
an observed GPS elevation
(NAVD 1988 DATUM).

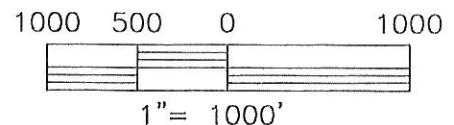
Bearings shown are Grid Bearings of
the Colorado State Plane Coordinate
System, North Zone, North American
Datum 1983/2007.

The lineal dimensions as contained
herein are based upon the "U.S.
Survey Foot."



King Surveyors Inc. of Windsor, Colorado has in accordance with a request from Craig Rasmuson for Synergy Resources Corporation determined the surface location of SRC STATE 16P to be 1360' from the South line and 2532' from the West line of Section 16, Township 4 North, Range 67 West of the Sixth Principal Meridian, County of Weld, State of Colorado.

Michael Chad Dilka, Licensed Land Surveyor, State of Colorado
38106



KING SURVEYORS, INC.

650 E. Garden Drive | Windsor, Colorado 80550

phone: (970) 686-5011 | fax: (970) 686-5821

www.kingsurveyors.com

PROJECT NO: 2008345

DATE: 05/20/2009

CLIENT: SYNERGY RESOURCES CO.

DWG: 2008345WELLS

FIELD OPERATOR: DALLAS NIELSEN

DATE OF WORK: 05/18/2009