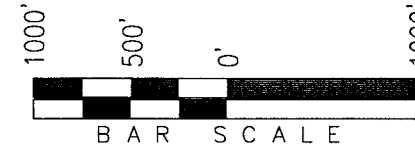


T1S, R97W, 6th P.M.

Exxon Mobil Corporation

WELL LOCATION, FREEDOM UNIT 197-31C5,
LOCATED AS SHOWN IN THE NE 1/4 NW 1/4
(LOT 7) OF SECTION 31, T1S, R97W, 6th P.M.,
RIO BLANCO COUNTY, COLORADO.



◆ = SECTION CORNERS LOCATED

BASIS OF BEARINGS & BASIS OF ELEVATION

BASIS OF BEARINGS IS A LINE BETWEEN MAGNOLIA & MEYERS TRIANGULATION STATION GRID COORDINATES WHICH IS ASSUMED TO BEAR S82°36'07"E.

BASIS OF ELEVATION IS MAGNOLIA TRIANGULATION STATION LOCATED IN THE NW 1/4 OF SECTION 9, T2S, R96W, 6th P.M. REPORTED FROM THE NATIONAL GEODETIC SURVEY (NAVD 88). ELEVATION IS REPORTED AS BEING 7529 FEET.

NOTES:

1. Well footages are measured at right angles to the Section Lines.
2. Bearings are based on Global Positioning Satellite observations.
3. G.P.S. Operator: D. PETTY, (PDOP) = 2.0

THIS IS TO CERTIFY THAT THE ABOVE WAS PREPARED FROM FIELD NOTES OF ACTUAL SURVEY MADE BY ME, OR UNDER MY SUPERVISION AND THAT THE SAME ARE TRUE AND CORRECT TO THE BEST OF MY KNOWLEDGE AND BELIEF.

30125

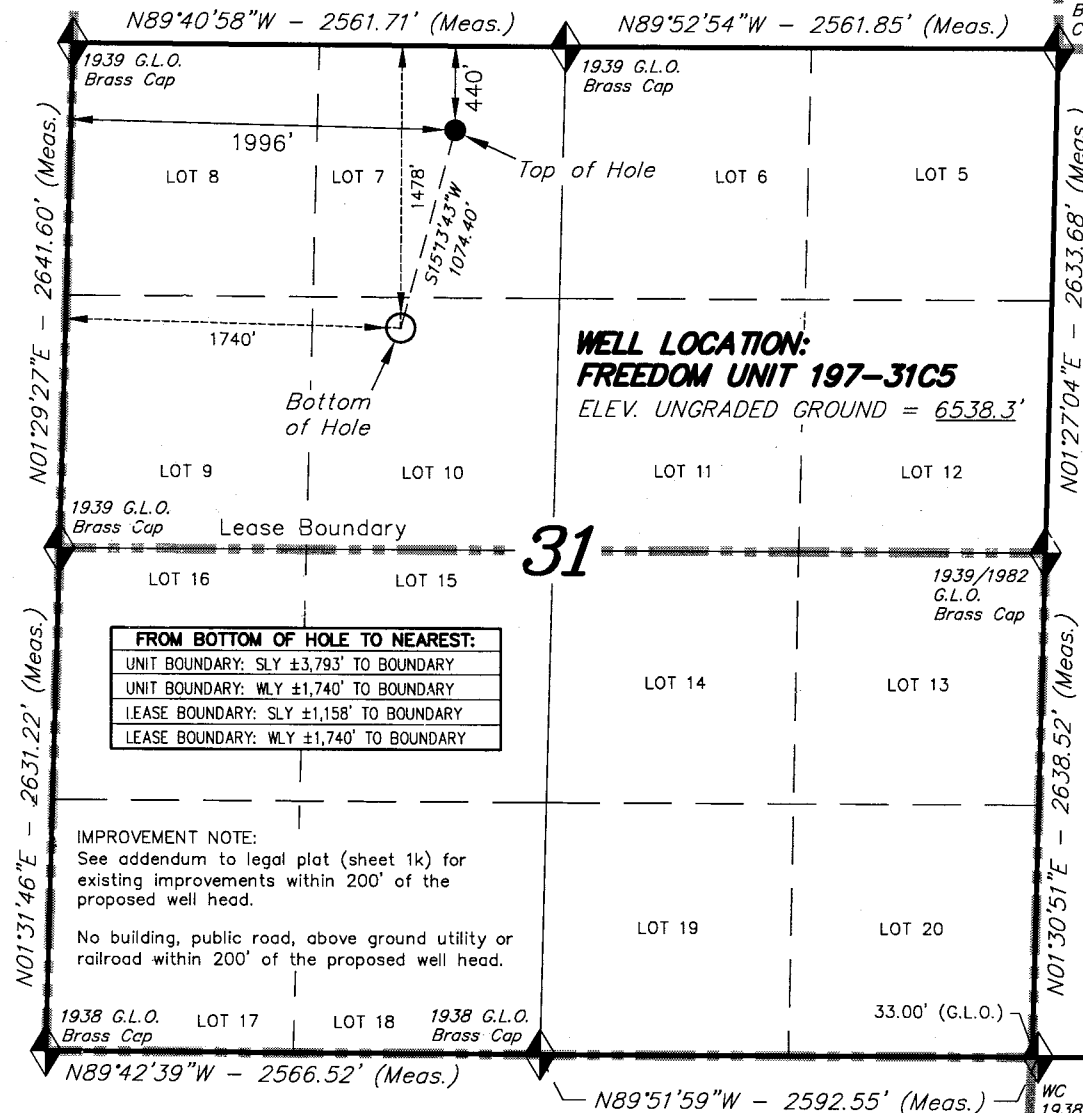
REGISTERED LAND SURVEYOR
REGISTRATION NO. 190125
STATE OF COLORADO

TRI STATE LAND SURVEYING & CONSULTING

180 NORTH VERNAL AVE. - VERNAL, UTAH 84078
(435) 781-2501

DATE SURVEYED: 01-02-06	SURVEYED BY: D.P.	SHEET 1e OF 8
DATE DRAWN: 02-15-06	DRAWN BY: D.COX	
REVISED: 02-26-07	SCALE: 1" = 1000'	

CO-NORTH NAD 83 (SURFACE LOCATION)	CO-NORTH NAD 83 (BOTTOM HOLE)	FROM SURFACE LOCATION TO NEAREST:
LATITUDE = 39°55'33.11" (39.925864)	LATITUDE = 39°55'22.78" (39.922996)	TOWN/COMMUNITY: NE 19.1 MILES TO MEEKER
LONGITUDE = 108°19'33.70" (108.326027)	LONGITUDE = 108°19'36.89" (108.326914)	UNIT BOUNDARY: SLY ±4,831' TO BOUNDARY
STATE PLANE COORDINATES	STATE PLANE COORDINATES	UNIT BOUNDARY: WLY ±1,996' TO BOUNDARY
N: = 1228469.585 E: = 2207551.983	N: = 1227433.275 E: = 2207269.869	LEASE BOUNDARY: SLY ±2,195' TO BOUNDARY
CO-NORTH NAD 27 (SURFACE LOCATION)	CO-NORTH NAD 27 (BOTTOM HOLE)	LEASE BOUNDARY: WLY ±1,996' TO BOUNDARY
LATITUDE = 39°55'33.21" (39.925892)	LATITUDE = 39°55'22.88" (39.923023)	EXISTING WELL: NELY ±3,126' TO 30-4 FEDERAL
LONGITUDE = 108°19'31.38" (108.325382)	LONGITUDE = 108°19'34.57" (108.326270)	
STATE PLANE COORDINATES	STATE PLANE COORDINATES	
N: = 228470.303 E: = 1207712.106	N: = 227434.000 E: = 1207430.000	



WELL LOCATION:
FREEDOM UNIT 197-31C5
ELEV. UNGRADED GROUND = 6538.3'

FROM BOTTOM OF HOLE TO NEAREST:

UNIT BOUNDARY: SLY ±3,793' TO BOUNDARY
UNIT BOUNDARY: WLY ±1,740' TO BOUNDARY
LEASE BOUNDARY: SLY ±1,158' TO BOUNDARY
LEASE BOUNDARY: WLY ±1,740' TO BOUNDARY

IMPROVEMENT NOTE:

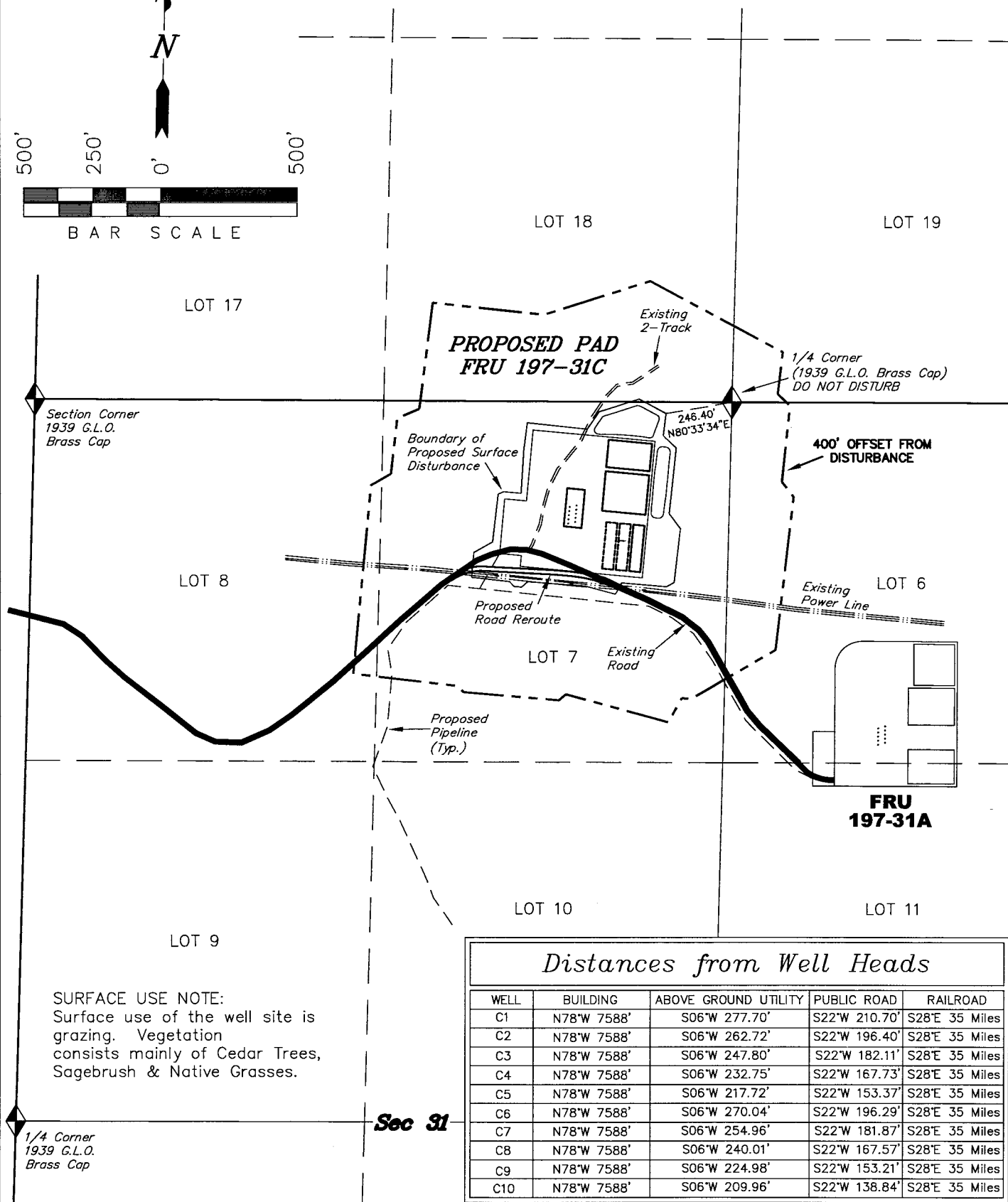
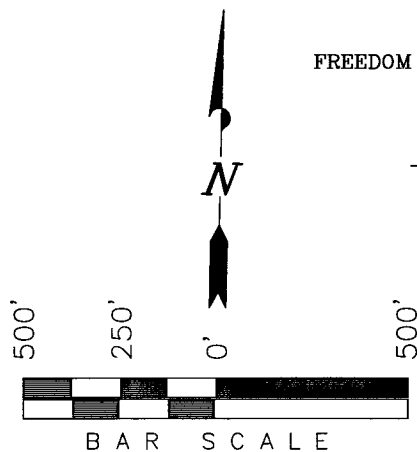
See addendum to legal plat (sheet 1k) for existing improvements within 200' of the proposed well head.

No building, public road, above ground utility or railroad within 200' of the proposed well head.

Exxon Mobil Corporation

ADDENDUM TO LEGAL PLATS FOR

WELL PAD (FREEDOM CREEK UNIT 197-31C)
FREEDOM CREEK UNIT 197-31C1, C2, C3, C4, C5, C6, C7, C8, C9 & C10
Section 31, T1S, R97W, 6th P.M.



SURVEYED BY: D.P. SURVEY DATE: 01-02-06
DRAWN BY: F.T.M. DATE DRAWN: 09-22-09
SCALE: 1" = 500' REVISED: F.T.M. 09-24-09

Tri State
Land Surveying, Inc.
180 NORTH VERNAL AVE. VERNAL, UTAH 84078
(435) 781-2501

SHEET
2k
OF 12

Exxon Mobil Corporation
Freedom Unit 197-31C
Section 31 T1S, R97W, 6th P.M.

Beginning at the city of Rifle Colorado, proceed in a Northerly direction on highway 13 approximately 18.8 miles to the junction at Rio Blanco; turn left and proceed in a northwesterly direction approximately 26.9 miles to the junction of this road and County Road 24; turn left and proceed in a easterly direction approximately 1.9 miles, to the junction of County Road 24 and County Road 31: Turn right and proceed Northwesterly on County Road 31 for approximately 2.3 miles to the junction of this road and County Road 83; Turn right and proceed northeasterly along County Road 83 for approximately 0.2 miles to the beginning of the access for the Freedom Unit 197-31A; turn right and proceed in a easterly direction approximately 1.3 Miles to the proposed access for the Freedom Unit 197-31C Well pad. Turn left and proceed northeasterly approximately 118' to the Proposed location for the Freedom Unit 197-31C Well pad.