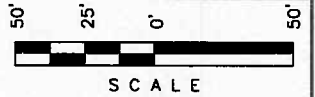


BERRY PETROLEUM COMPANY

TYPICAL RIG LAYOUT FOR

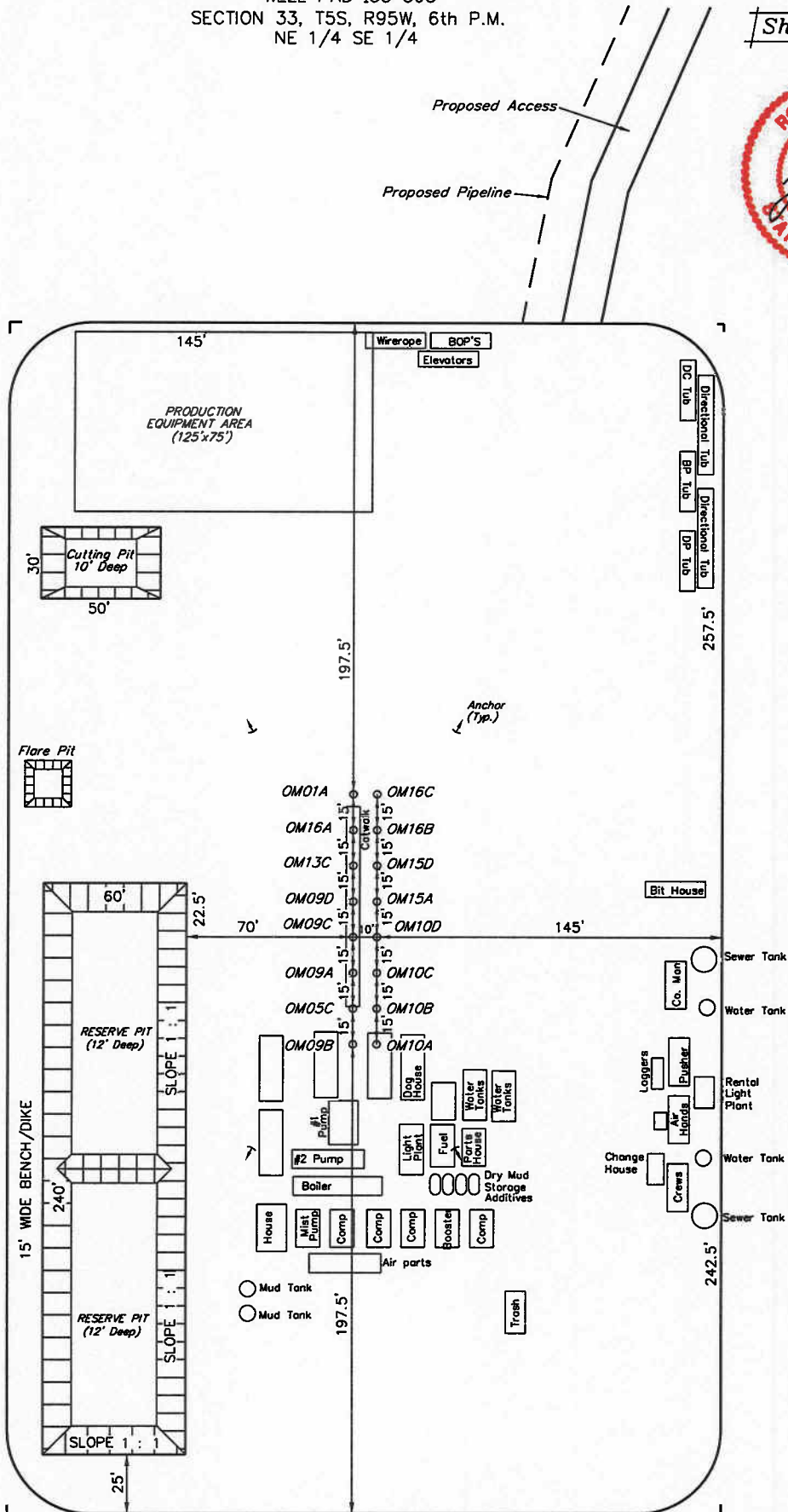
WELL PAD 133 595
SECTION 33, T5S, R95W, 6th P.M.
NE 1/4 SE 1/4



Sheet 4 of 12



SCALE: 1" = 50'
DATE: 05-13-09
Drawn By: D.R.B.
Revised: 06-30-09 D.R.B.



NOTE:
Flare Pit is to be located a min. of 100' from the Well Head.

RESERVE PIT
Total Pit Capacity
W/2' of Freeboard
= 18,580 Bbls. ±
Total Pit Volume
= 4,890 Cu. Yds.