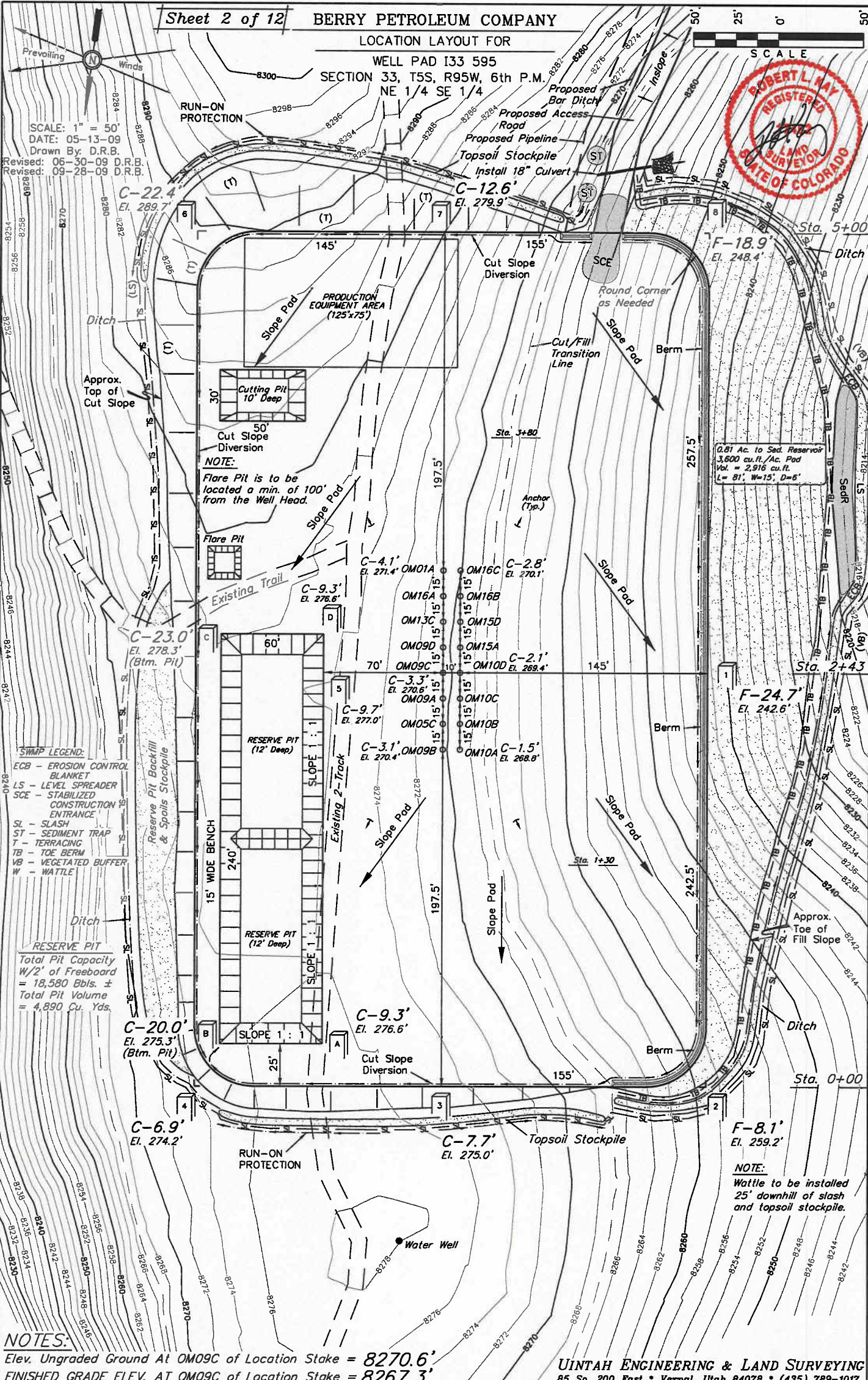




SCALE: 1" = 50'
DATE: 05-13-09
Drawn By: D.R.B.
Revised: 06-30-09 D.R.B.
Revised: 09-28-09 D.R.B.



NOTES:
Elev. Ungraded Ground At OM09C of Location Stake = 8270.6'
FINISHED GRADE ELEV. AT OM09C of Location Stake = 8267.3'

UINTAH ENGINEERING & LAND SURVEYING
85 So. 200 East • Vernal, Utah 84078 • (435) 789-1017