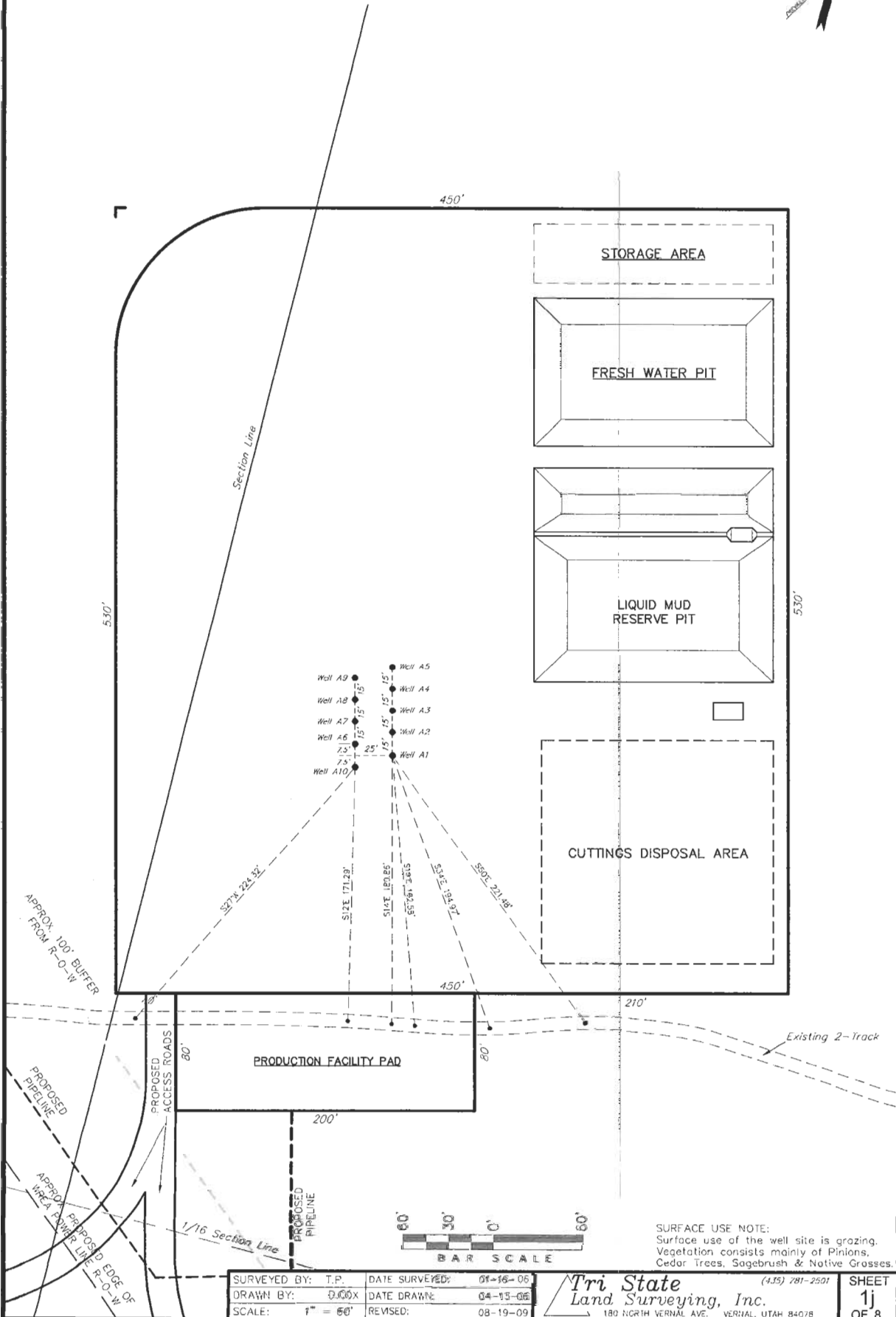
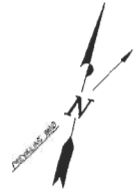


ExxonMobil Oil Corporation

ADDENDUM TO LEGAL PLATS FOR

WELL PAD (PICEANCE CREEK UNIT 197-34A)

PICEANCE CREEK UNIT 197-34A1, A2, A3, A4, A5, A6, A7, A8, A9 & A10
Section 34, T1S, R97W, 6th P.M.

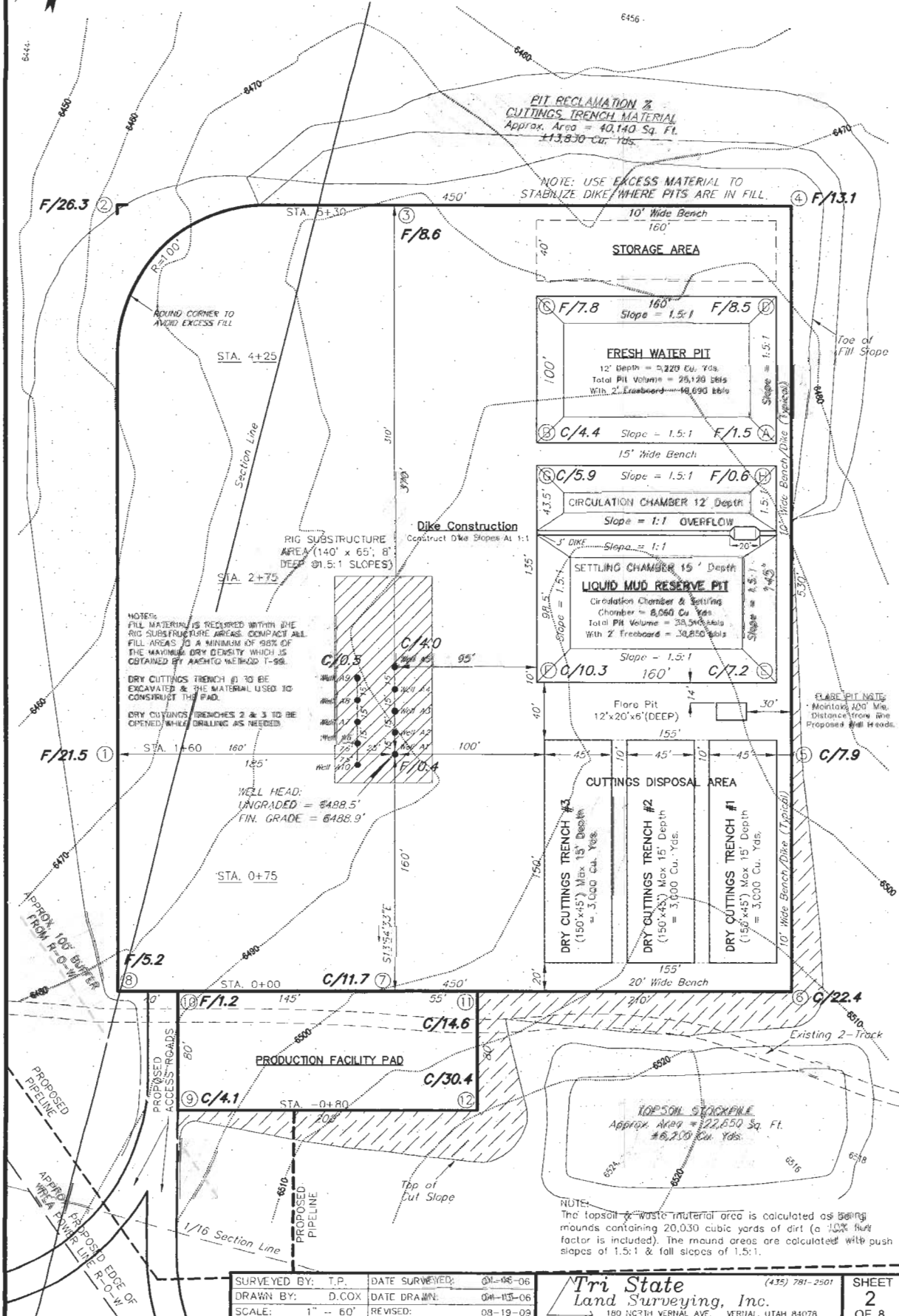


ExxonMobil Oil Corporation

FIGURE #1

LOCATION LAYOUT

WELL PAD (PICEANCE CREEK UNIT 197-34A)
PICEANCE CREEK UNIT 197-34A1, A2, A3,
A4, A5, A6, A7, A8, A9 & A10
Section 34, T1S, R97W, 6th P.M.



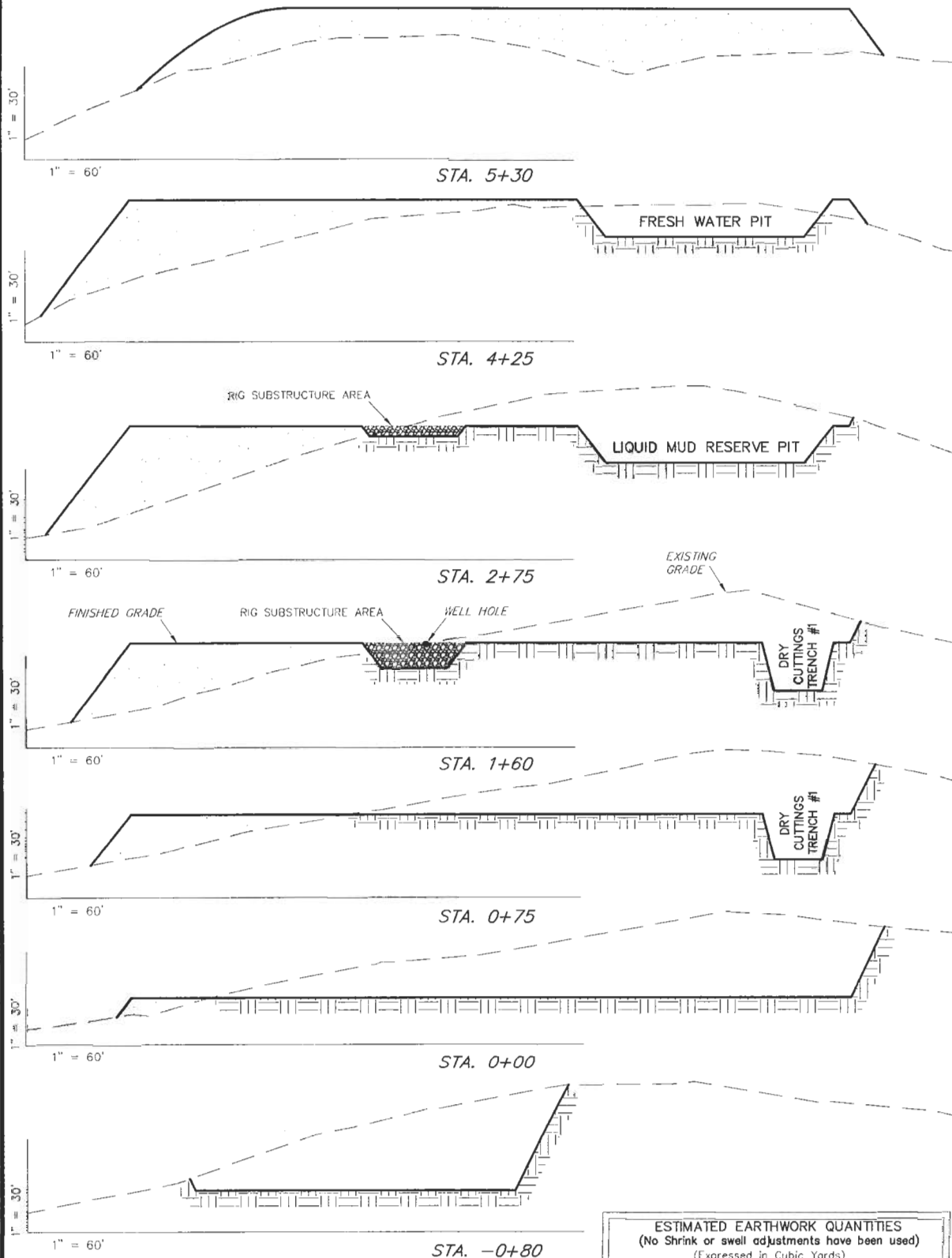
SURVEYED BY: T.P. DATE SURVEYED: 01-08-06
DRAWN BY: D.COX DATE DRAWN: 01-13-06
SCALE: 1" = 60' REVISED: 08-19-03

Tri State
Land Surveying, Inc.
180 NORTH VERNAL AVE. VERNAL, UTAH 84078
(435) 781-2501

SHEET
2
OF 8

CROSS SECTIONS

WELL PAD (PICEANCE CREEK UNIT 197-34A)
PICEANCE CREEK UNIT 197-34A1, A2, A3, A4, A5, A6, A7, A8, A9 & A10
Section 34, T1S, R97W, 6th P.M.



NOTES:

- 1.) UNLESS OTHERWISE NOTED, CUT SLOPES ARE AT 1:1 & FILL SLOPES ARE AT 1.5:1.
- 2.) RIG SUBSTRUCTURE TO BE EXCAVATED AND USED TO CONSTRUCT THE LOCATION.
- 3.) RIG SUBSTRUCTURE MATERIAL TO BE REPLACED WITH ENGINEERED MATERIAL TO ALLOW FOR 98% COMPACTION.

ESTIMATED EARTHWORK QUANTITIES (No Shrink or swell adjustments have been used) (Expressed in Cubic Yards)				
ITEM	CUT	FILL	6" TOPSOIL	EXCESS
SUBSTRUCTURE	2,020	0	Topsoil is not included in Pad Cut	2,020
PITS	16,260	0		16,260
PAD	49,870	61,580	5,640	-11,710
TOTALS	68,150	61,580	5,640	6,570

SURVEYED BY: T.P. DATE SURVEYED: 01-16-06
DRAWN BY: D.COX DATE DRAWN: 04-13-06
SCALE: 1" = 60' REVISED: 08-19-09

Tri State
Land Surveying, Inc.
(435) 781-2301
180 NORTH VERNAL AVE. VERNAL, UTAH 84078

SHEET
3
OF 8

TYPICAL RIG LAYOUT

WELL PAD (PICEANCE CREEK UNIT 197-34A)
 PICEANCE CREEK UNIT 197-34A1, A2, A3, A4, A5, A6, A7, A8, A9 & A10
 Section 34, T1S, R97W, 6th P.M.

