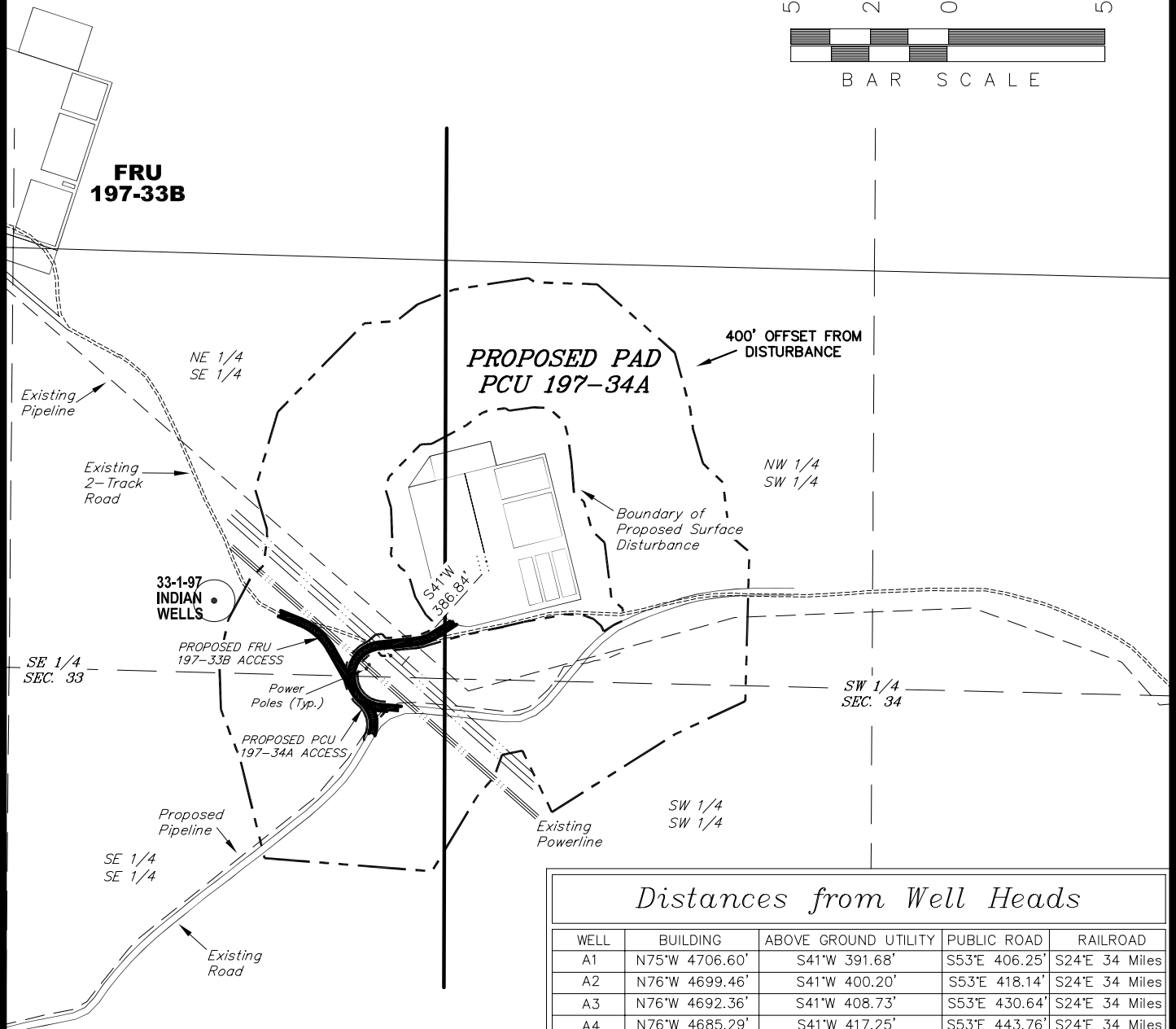
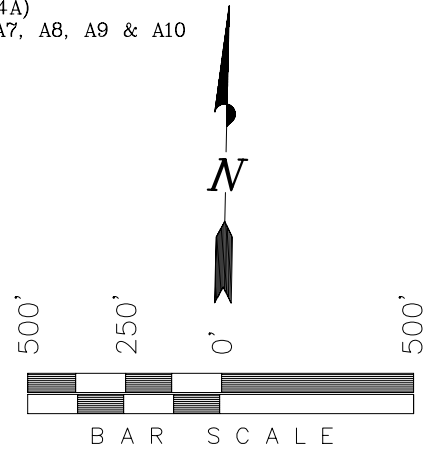


# ExxonMobil Oil Corporation

## ADDENDUM TO LEGAL PLATS FOR

WELL PAD (PICEANCE CREEK UNIT 197-34A)  
PICEANCE CREEK UNIT 197-34A1, A2, A3, A4, A5, A6, A7, A8, A9 & A10  
Section 34, T1S, R97W, 6th P.M.



### Distances from Well Heads

WELL	BUILDING	ABOVE GROUND UTILITY	PUBLIC ROAD	RAILROAD
A1	N75°W 4706.60'	S41°W 391.68'	S53°E 406.25'	S24°E 34 Miles
A2	N76°W 4699.46'	S41°W 400.20'	S53°E 418.14'	S24°E 34 Miles
A3	N76°W 4692.36'	S41°W 408.73'	S53°E 430.64'	S24°E 34 Miles
A4	N76°W 4685.29'	S41°W 417.25'	S53°E 443.76'	S24°E 34 Miles
A5	N76°W 4678.26'	S41°W 425.78'	S53°E 457.52'	S24°E 34 Miles
A6	N75°W 4681.06'	S41°W 375.37'	S53°E 428.03'	S24°E 34 Miles
A7	N75°W 4673.90'	S41°W 383.89'	S53°E 439.54'	S24°E 34 Miles
A8	N76°W 4666.79'	S41°W 392.42'	S53°E 451.16'	S24°E 34 Miles
A9	N76°W 4659.70'	S41°W 400.94'	S53°E 463.34'	S24°E 34 Miles
A10	N75°W 4688.25'	S41°W 366.84'	S53°E 416.53'	S24°E 34 Miles

SURFACE USE NOTE:  
Surface use of the well site is grazing. Vegetation consists mainly of Pinions, Cedar Trees, Sagebrush & Native Grasses.

SURVEYED BY: \_\_\_\_\_ SURVEY DATE: 08-27-09  
DRAWN BY: F.T.M. DATE DRAWN: 09-09-09  
SCALE: 1" = 500' REVISED: F.T.M. 10-26-09

**Tri State**  
Land Surveying, Inc.  
180 NORTH VERNAL AVE. VERNAL, UTAH 84078

SHEET  
1j  
OF 8