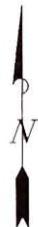


ExxonMobil Oil Corporation

**Piceance Creek Unit 197-34A
SEC. 34, T1S, R97W, 6th P.M.**



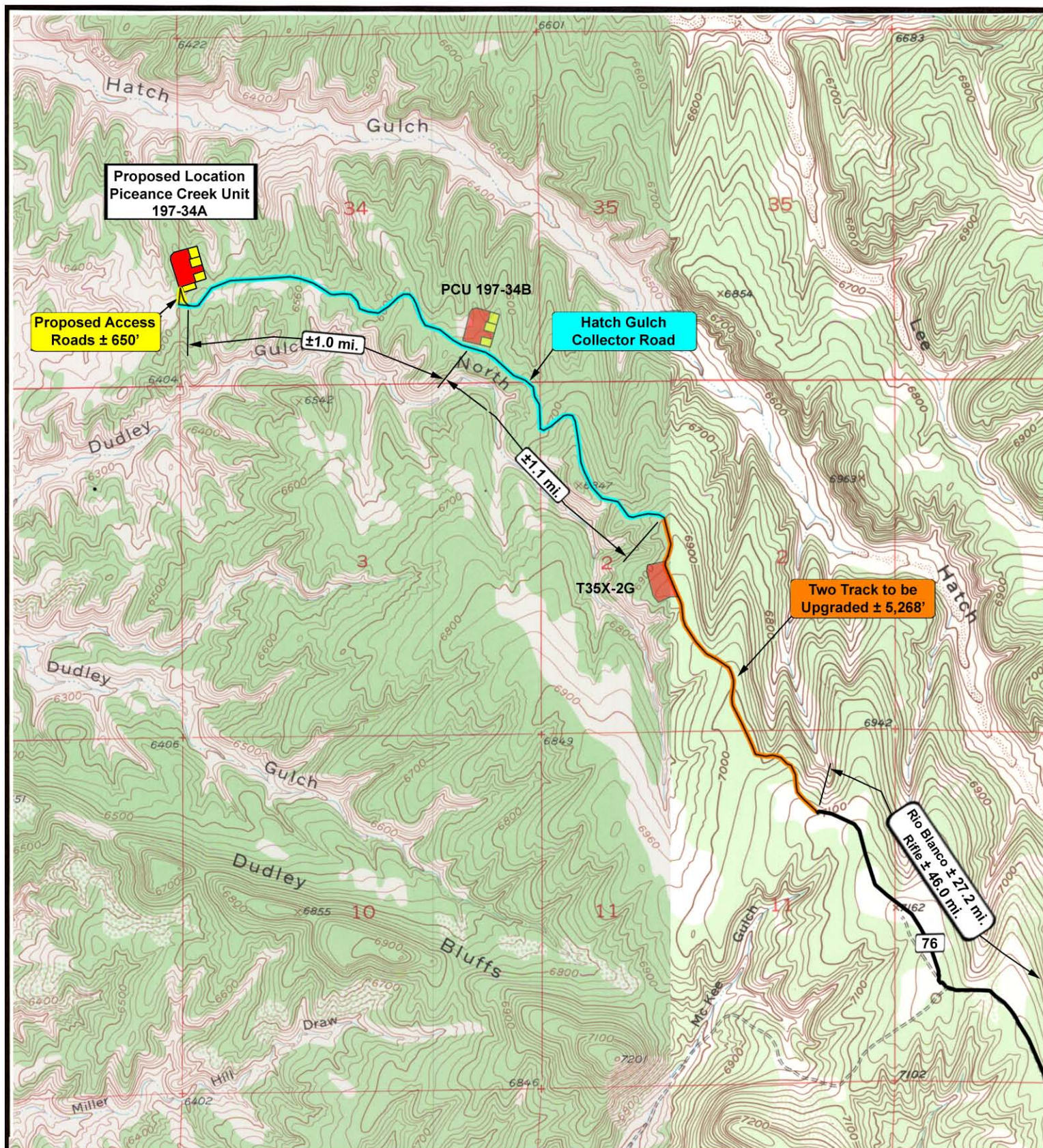
**Tri-State
Land Surveying Inc.**
(435) 781-2501
180 North Vernal Ave. Vernal, Utah 84078

SCALE: 1 : 100,000
DRAWN BY: mw
DATE: 06-18-2008

Legend

Existing Road
Proposed Access

TOPOGRAPHIC MAP
"A"
SHEET
5
OF 8



ExxonMobil Oil Corporation

**Piceance Creek Unit 197-34A
SEC. 34, T1S, R97W, 6th P.M.**



**Tri-State
Land Surveying Inc.**
(435) 781-2501
180 North Vernal Ave. Vernal, Utah 84078

SCALE: 1" = 2,000'
DRAWN BY: mw
DATE: 06-18-2008

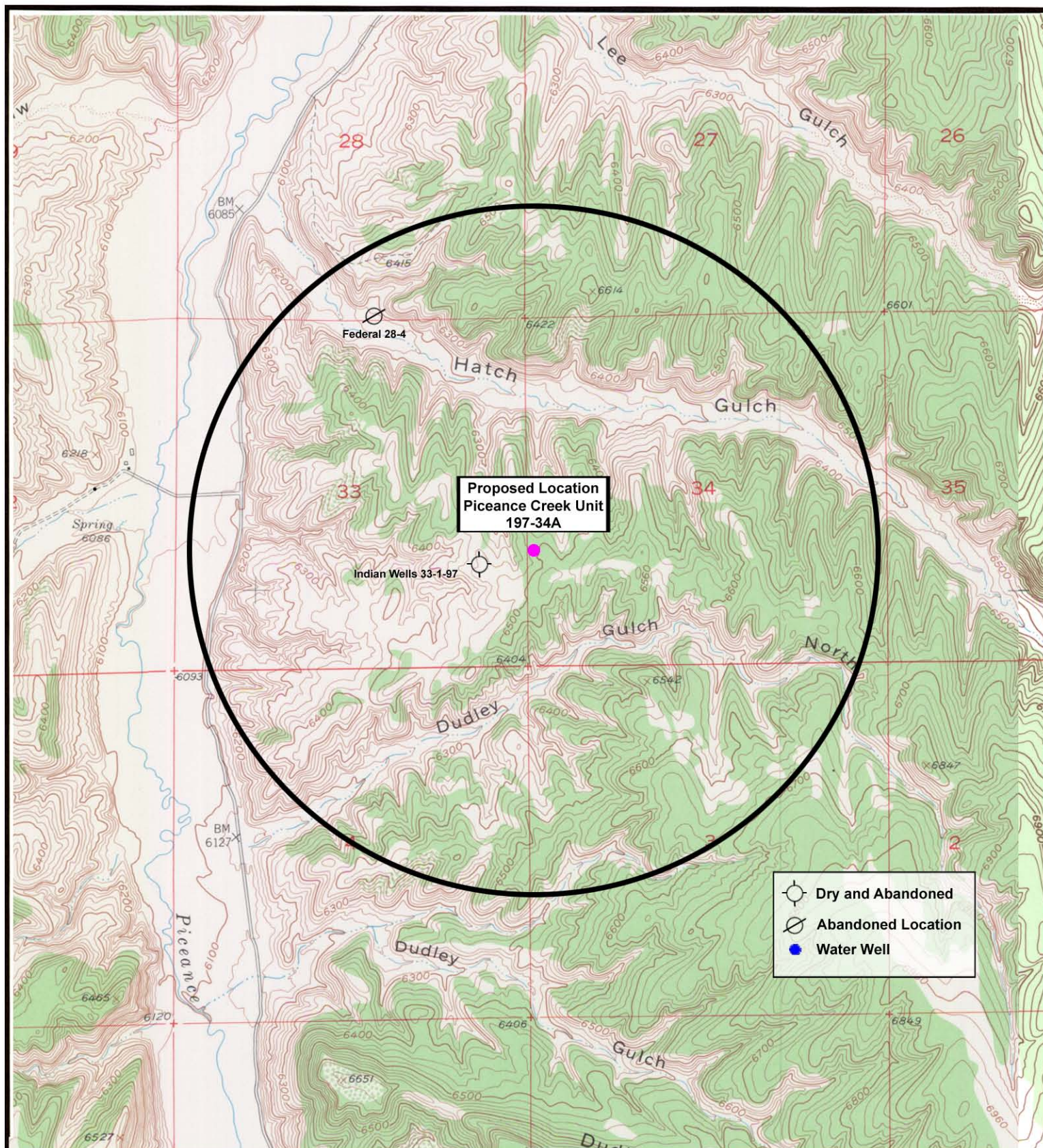
Legend

Existing Road
Proposed Access

TOPOGRAPHIC MAP

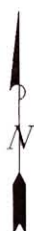
"B"

SHEET
6
OF 8



ExxonMobil Oil Corporation

**Piceance Creek Unit 197-34A
SEC. 34, T1S, R97W, 6th P.M.**



**Tri-State
Land Surveying Inc.**
(435) 781-2501
180 North Vernal Ave. Vernal, Utah 84078

SCALE: 1" = 2,000'
DRAWN BY: mw
DATE: 06-18-2008

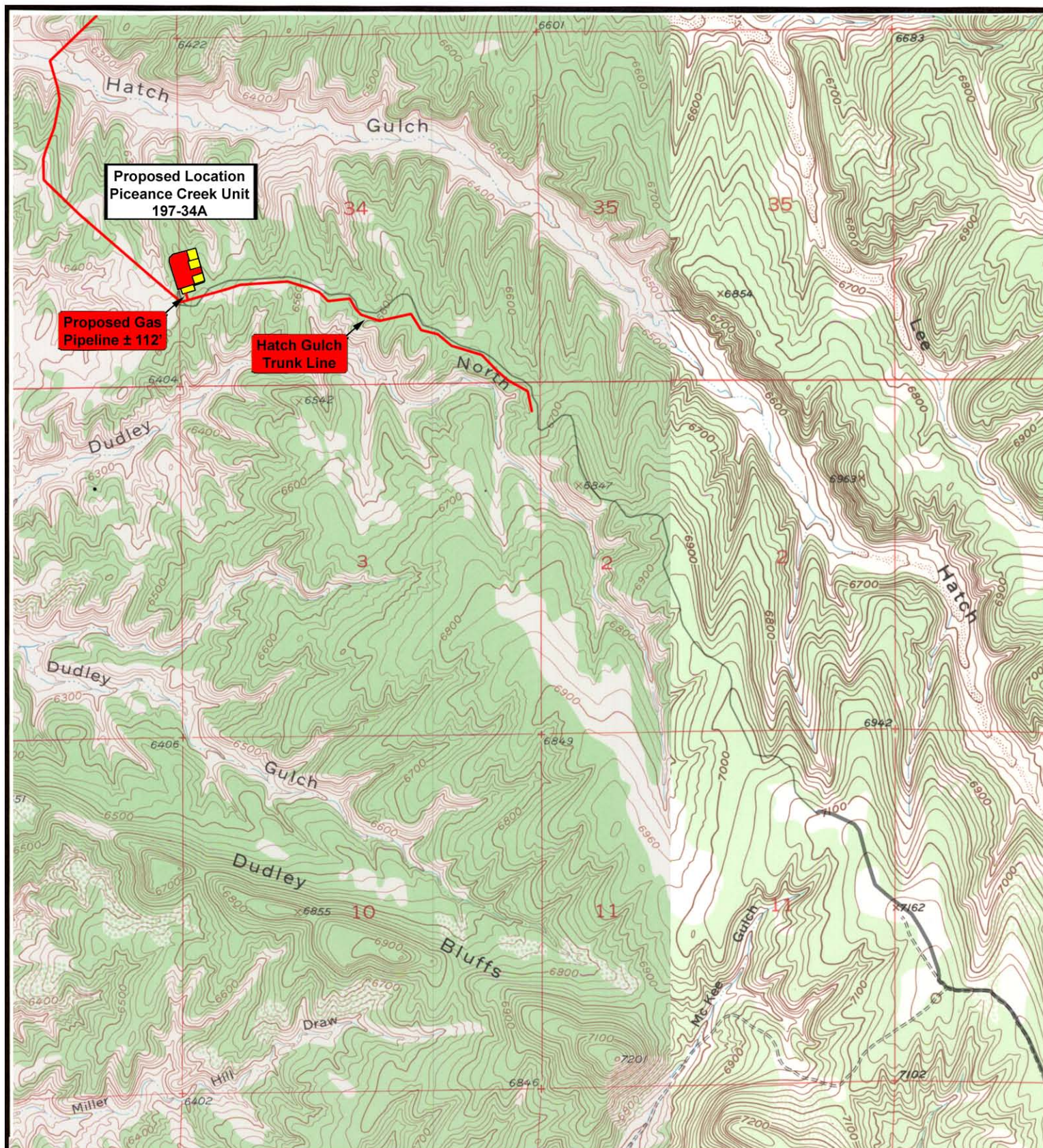
Legend

- Location
- One-Mile Radius

TOPOGRAPHIC MAP

"C"

**SHEET
7
OF 8**



ExxonMobil Oil Corporation

**Piceance Creek Unit 197-34A
SEC. 34, T1S, R97W, 6th P.M.**



**Tri-State
Land Surveying Inc.**
(435) 781-2501
180 North Vernal Ave. Vernal, Utah 84078

SCALE: 1" = 2,000'
DRAWN BY: mw
DATE: 06-18-2008

Legend

— Roads
— Existing Gas Line
- - - Proposed Gas Line

TOPOGRAPHIC MAP

"D"

SHEET
8
OF 8