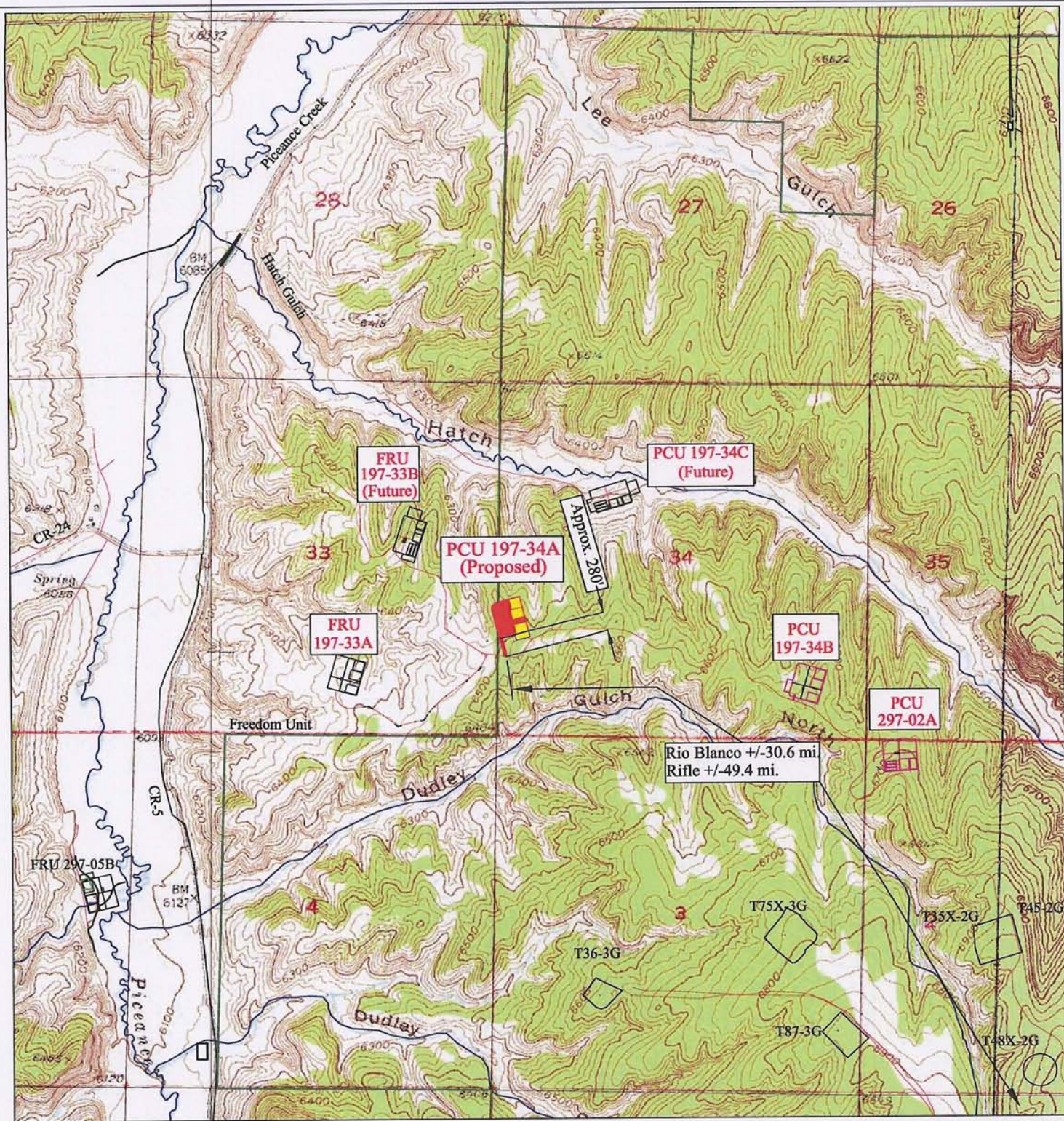


P1	9 JAN 09	Deleted Hatch Gultch Access			CEL	CEL	WFD
P	2 JULY 08	Preliminary		----	SB	SB	WFD
REV.	DATE	REVISION DESCRIPTION		ENG.	DRAWN	CHECKED	APPROVED



NOTES:

1. Reference USGS quadrangles titled Square S Ranch, Greasewood Gulch, Rock School, and Jessup Gulch.
2. Contour Interval is 20' for all background maps.
3. Coordinates are NAD27, US State plane, CO north zone 0501.
4. Streams shown thus: _____
5. Existing Roads shown thus: _____
6. Proposed Roads shown thus: _____
7. Reference Drawing No. PC-08-005, 'Hatch Gulch Corridor'.

PCU 197-34A - Topo "B" Section 34, T1S, R97W, 6th P.M. Piceance Development Project

1000 500 0 500 1000 2000 3000 4000 5000 feet

Scale= 1" : 2000'

Drawn by: SB

Checked by: SB

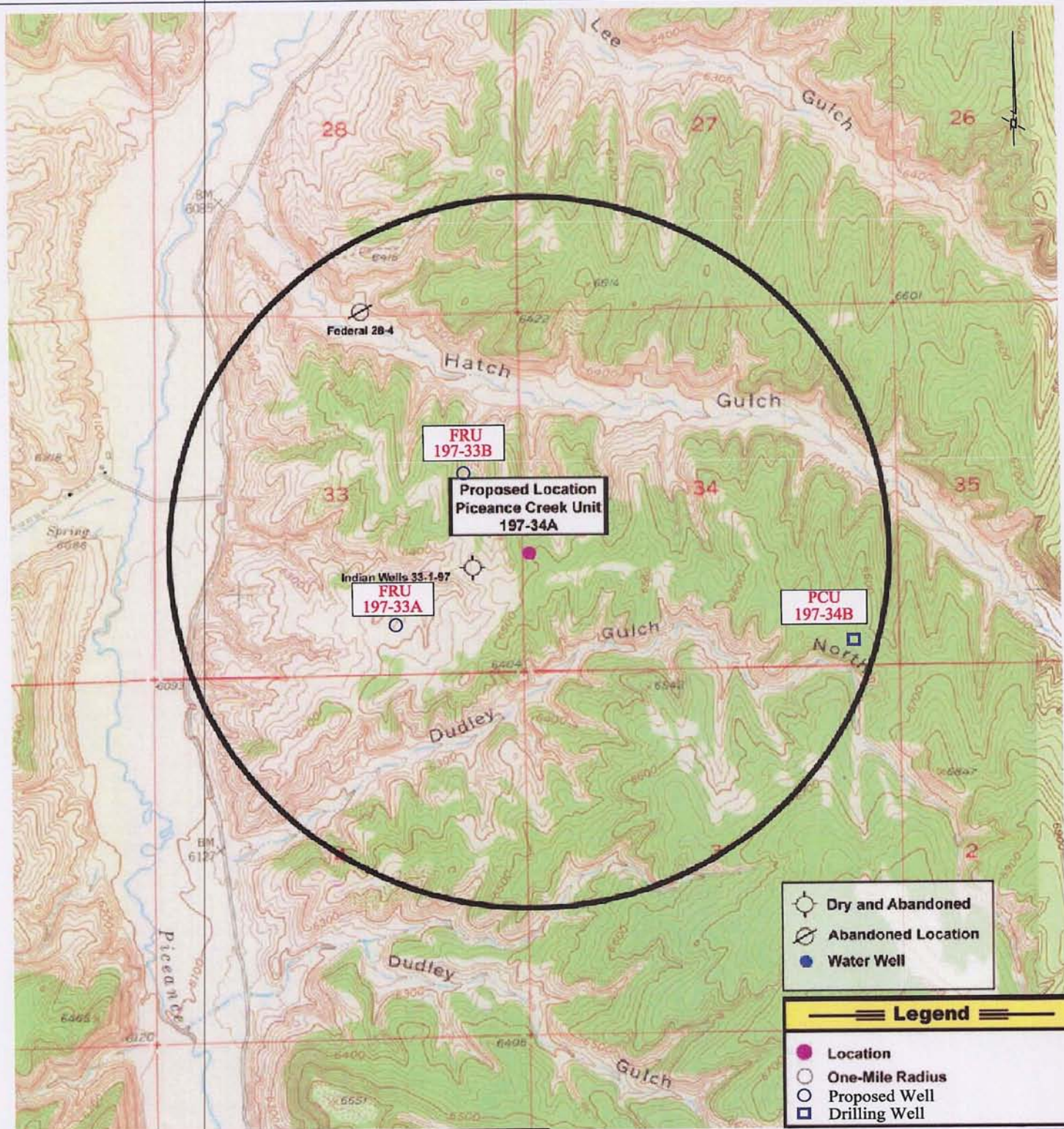
Date: July 2, 2008

Scale: 1":2000'

Dwg No. WP197-34A-08-002

EXXONMOBIL

P1	9 JAN 09	Deleted Hatch Gulch Access		CEL	CEL	WFD
P	2 JULY 08	Preliminary	----	SB	SB	WFD
REV.	DATE	REVISION DESCRIPTION	ENG.	DRAWN	CHECKED	APPROVED



NOTES:

1. Reference USGS quadrangles titled Square S Ranch, Greasewood Gulch, Rock School, and Jessup Gulch.
2. Contour Interval is 20' for all background maps.
3. Coordinates are NAD27, US State plane, CO north zone 0501.

PCU 197-34A - Topo "C" Section 34, T1S, R97W, 6th P.M. Piceance Development Project

1000 500 0 500 1000 2000 3000 4000 5000 feet

Scale= 1" : 2000'

Drawn by: CEL

Checked by: CEL

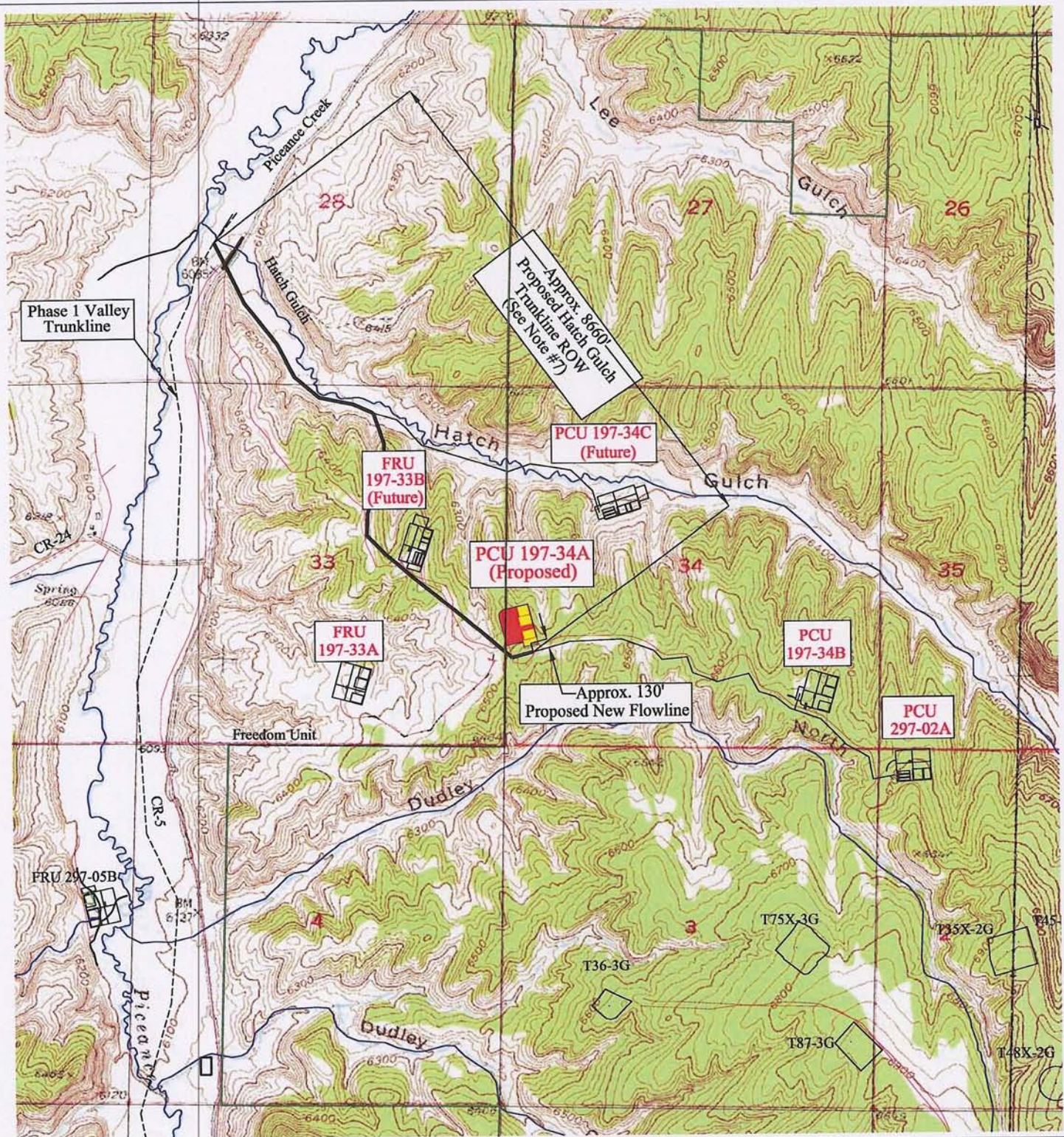
Date: Jan 9, 2009

Scale: 1":2000'

Dwg No. WP197-34A-08-007

EXXONMOBIL

REV.	DATE	REVISION DESCRIPTION	ENG.	DRAWN	CHECKED	APPROVED
P	9 JAN 09	Preliminary	---	CEL	CEL	WFD



NOTES:

1. Reference USGS quadrangles titled Square S Ranch, Greasewood Gulch, Rock School, and Jessup Gulch.
2. Contour Interval is 20' for all background maps.
3. Coordinates are NAD27, US State plane, CO north zone 0501.
4. Streams shown thus: _____
5. Existing Roads shown thus: _____
6. Proposed Pipelines shown thus: _____
7. Reference Drawing No. PC-08-005, 'Hatch Gulch Corridor'.

PCU 197-34A - Topo "D" Section 34, T1S, R97W, 6th P.M. Piceance Development Project

1000 500 0 500 1000 2000 3000 4000 5000 feet

Scale= 1" : 2000'

Drawn by: SB

Checked by: SB

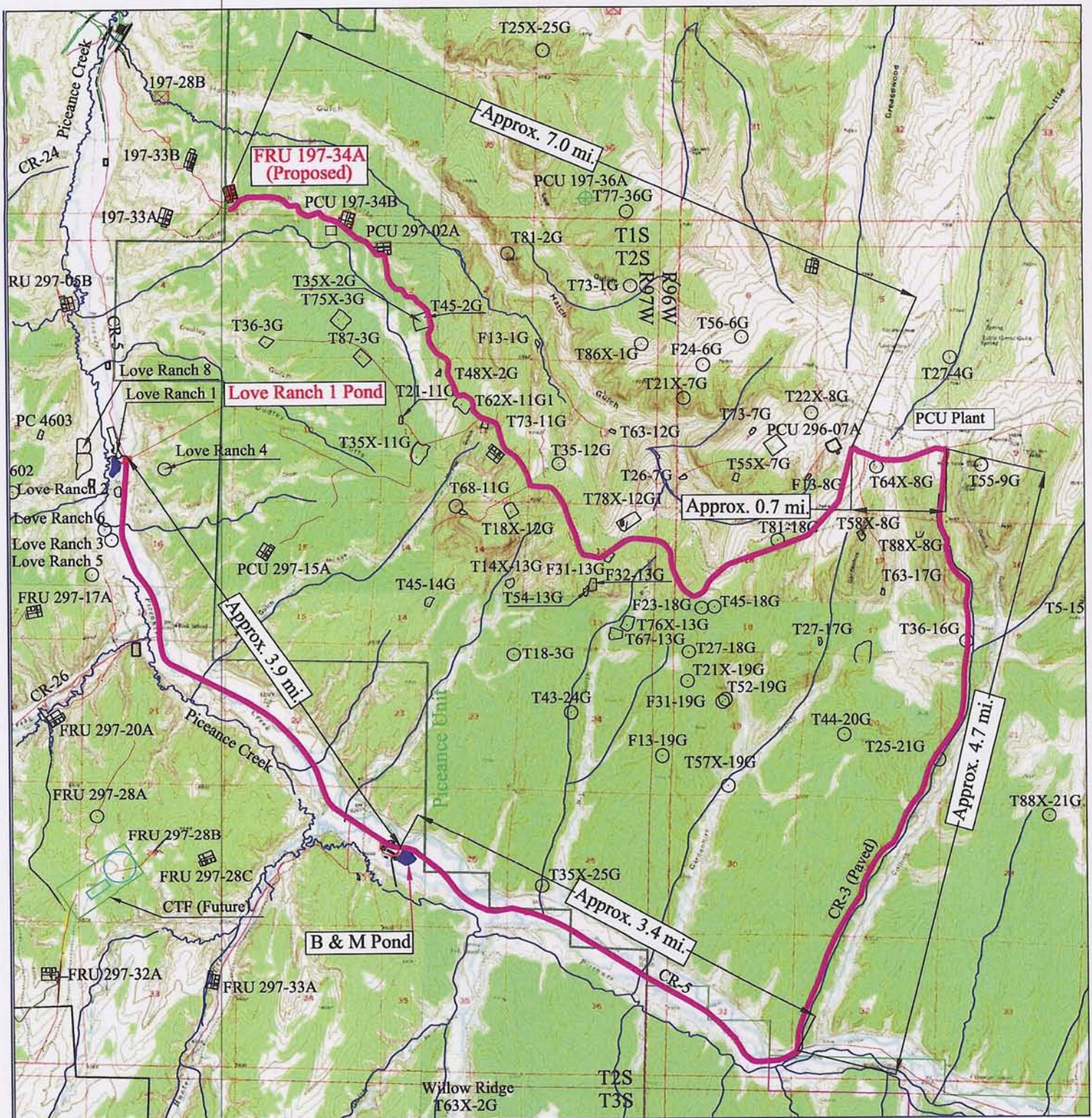
Date: July 1, 2008

Scale: 1":2000'

Dwg No. WP197-34A-08-003

EXXONMOBIL

REV.	DATE	REVISION DESCRIPTION	ENG.	DRAWN	CHECKED	APPROVED
P1	13 JAN 09	Deleted Hatch Gulch Access	----	CEL	CEL	WFD
P	1 JULY 08	Preliminary	----	SB	SB	WFD



NOTES:

- Reference USGS quadrangles titled Square S Ranch, Greasewood Gulch, Rock School, and Jessup Gulch.
- Contour Interval is 20' for all background maps.
- Coordinates are NAD27, US State plane, CO north zone 0501.
- Streams shown thus:
- Existing Roads shown thus:
- Proposed Water Haul Route shown thus:

Water Haul Routes - FRU 197-34A Section 34, T1S, R97W, 6th P.M. Piceance Development Project

2500 1250 0 1250 2500 5000 7500 10,000 12,500 feet

Scale= 1" : 5000'

Drawn by: SB

Checked by: SB

Date: June 20, 2008

Scale: 1":5000'

Dwg No. WP197-34A-08-004

EXXONMOBIL

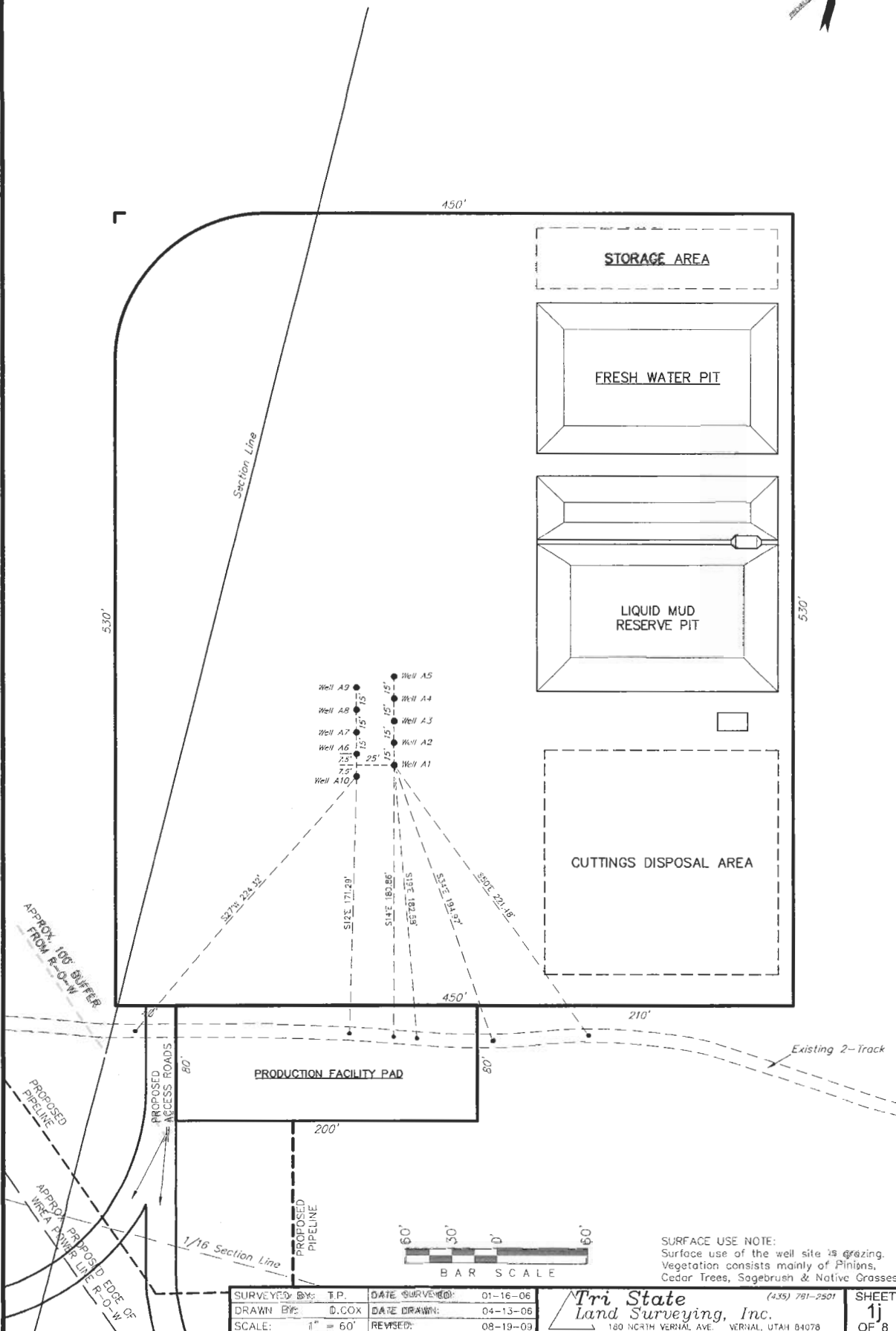
REV.	DATE	REVISION DESCRIPTION	ENG.	DRAWN	CHECKED	APPROVED
P1	9 Jan 09	Deleted Hatch Gulch Access	CEL	CEL	WFD	
P	20 JUNE 08	Preliminary	SB	SB	WFD	

ExxonMobil Oil Corporation

ADDENDUM TO LEGAL PLATS FOR

WELL PAD (PICEANCE CREEK UNIT 197-34A)

PICEANCE CREEK UNIT 197-34A1, A2, A3, A4, A5, A6, A7, A8, A9 & A10
Section 34, T1S, R97W, 6th P.M.

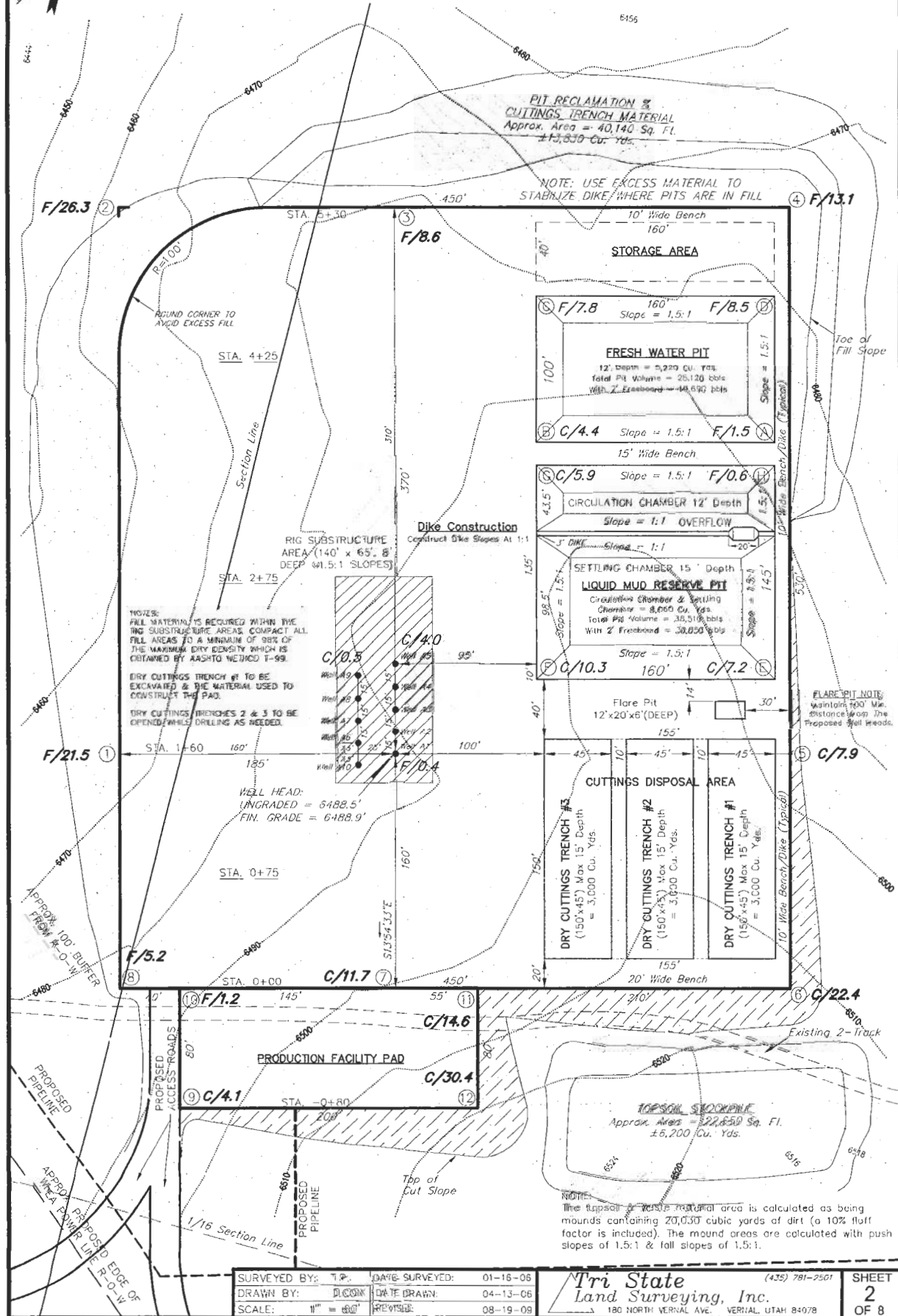


ExxonMobil Oil Corporation

FIGURE #1

LOCATION LAYOUT

WELL PAD (PICEANCE CREEK UNIT 197-34A)
PICEANCE CREEK UNIT 197-34A1, A2, A3,
A4, A5, A6, A7, A8, A9 & A10
Section 34, T1S, R97W, 6th P.M.



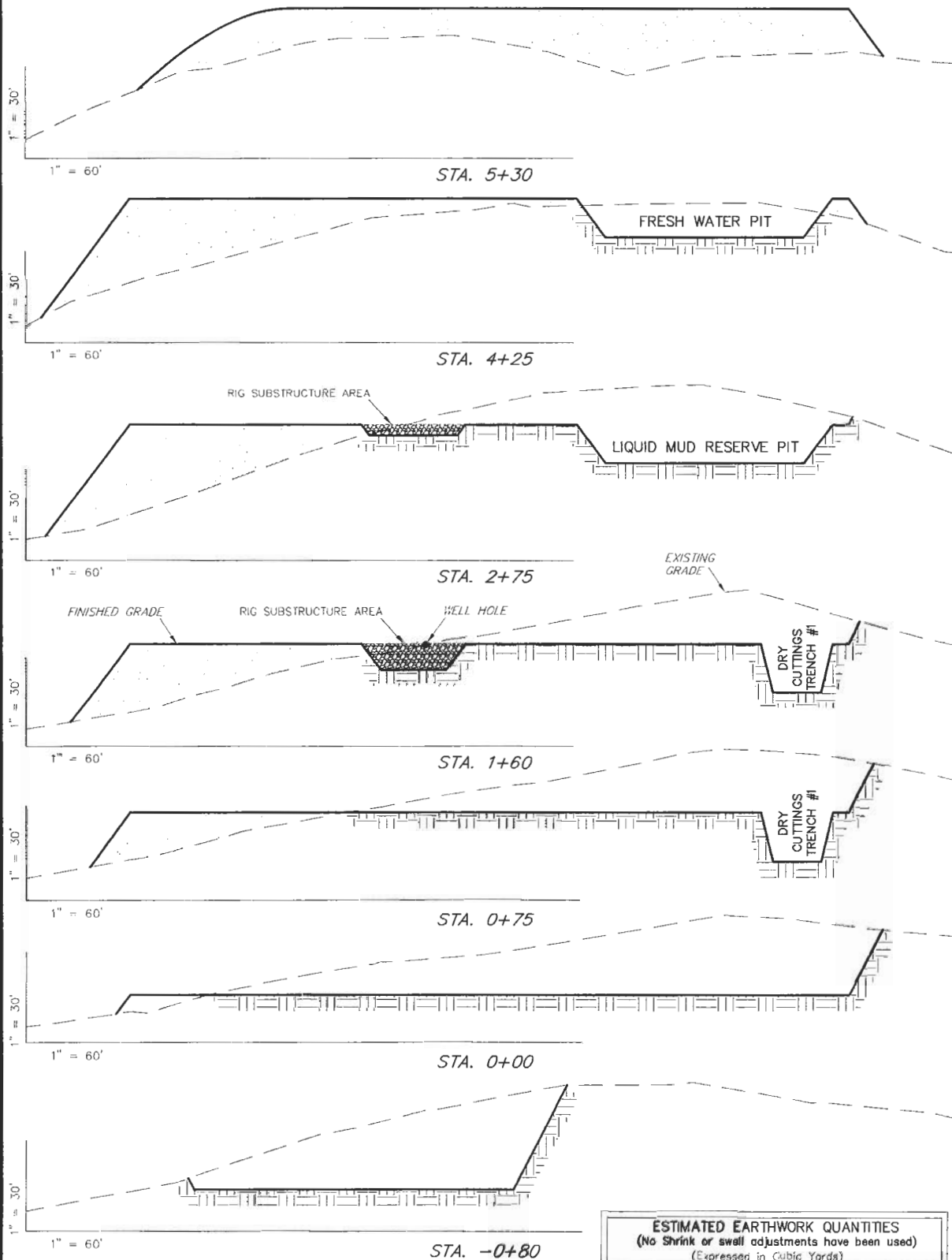
SURVEYED BY: T.P. DATE SURVEYED: 01-16-06
DRAWN BY: DUCOM DATE DRAWN: 04-13-06
SCALE: 1" = 400' REVISED: 08-19-09

Tri State
Land Surveying, Inc.
180 NORTH VERNAL AVE. VERNAL, UTAH 84078
(435) 781-2501

SHEET
2
OF 8

CROSS SECTIONS

WELL PAD (PICEANCE CREEK UNIT 197-34A)
PICEANCE CREEK UNIT 197-34A1, A2, A3, A4, A5, A6, A7, A8, A9 & A10
Section 34, T1S, R97W, 6th P.M.



NOTES:

- 1.) UNLESS OTHERWISE NOTED, CUT SLOPES ARE AT 1:1 & FILL SLOPES ARE AT 1.5:1.
- 2.) RIG SUBSTRUCTURE TO BE EXCAVATED AND USED TO CONSTRUCT THE LOCATION.
- 3.) RIG SUBSTRUCTURE MATERIAL TO BE REPLACED WITH ENGINEERED MATERIAL TO ALLOW FOR 98% COMPACTION.

ESTIMATED EARTHWORK QUANTITIES
(No Shrink or swell adjustments have been used)
(Expressed in Cubic Yards)

ITEM	CUT	FILL	6" TOPSOIL	EXCESS
SUBSTRUCTURE	2,020	0	Topsoil is not included in Pad Cut	2,020
PITS	16,260	0		16,260
PAD	49,870	61,580	5,840	-11,710
TOTALS	68,150	61,580	5,840	6,570

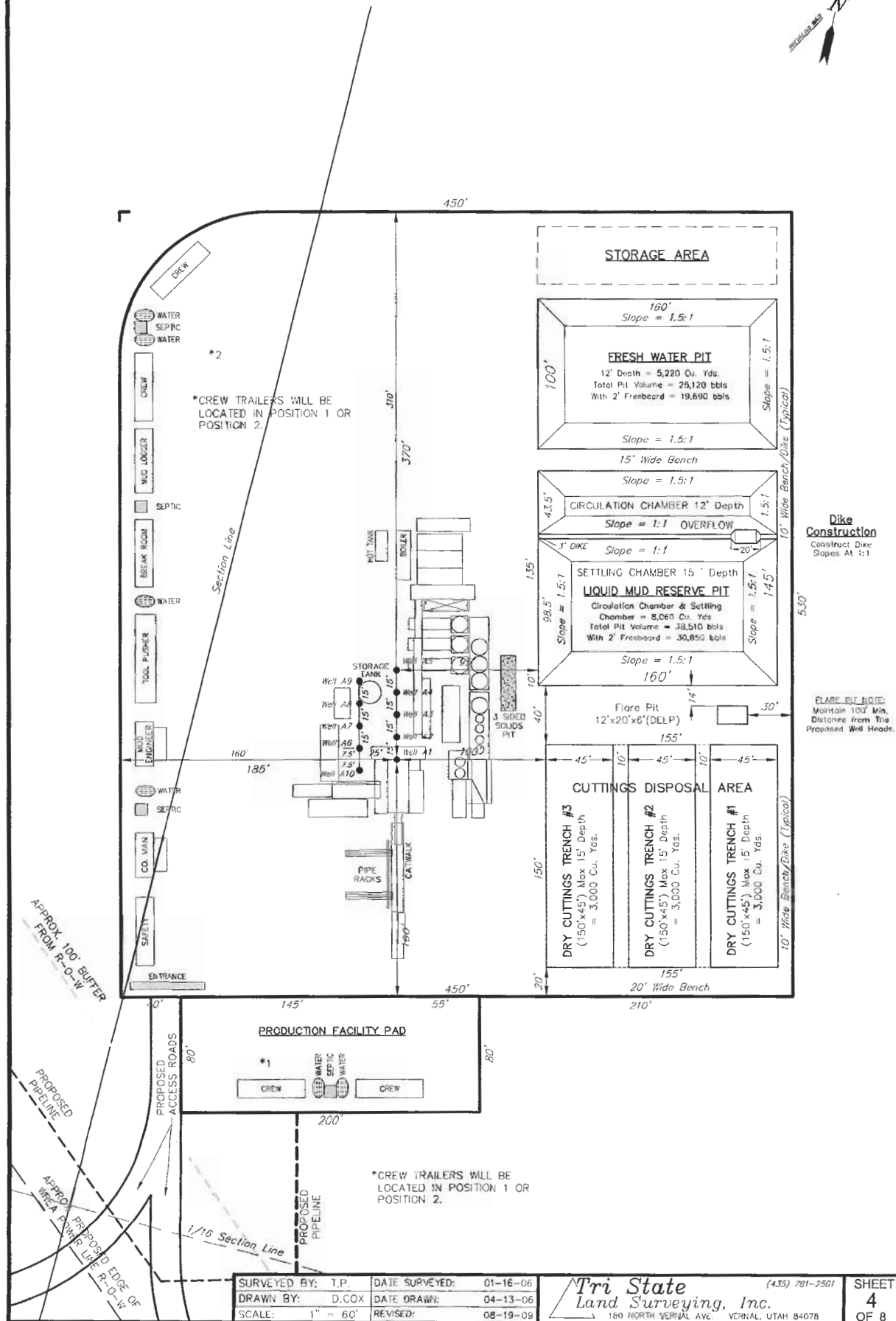
SURVEYED BY: T.P. DATE SURVEYED: 01-16-06
DRAWN BY: D.COX DATE DRAWN: 06-13-06
SCALE: 1" = 60' REVISED: 08-19-09

Tri State
Land Surveying, Inc.
180 NORTH VERNAL AVE. VERNAL, UTAH 84078
(435) 781-2501

SHEET
3
OF 8

TYPICAL RIG LAYOUT

WELL PAD (PICEANCE CREEK UNIT 197-34A)
PICEANCE CREEK UNIT 197-34A1, A2, A3, A4, A5, A6, A7, A8, A9 & A10
Section 34, T1S, R97W, 6th P.M.



SURVEYED BY: T.P. DATE SURVEYED: 01-16-06
DRAWN BY: D.COX DATE DRAWN: 04-13-06
SCALE: 1" = 60' REVISED: 08-19-09

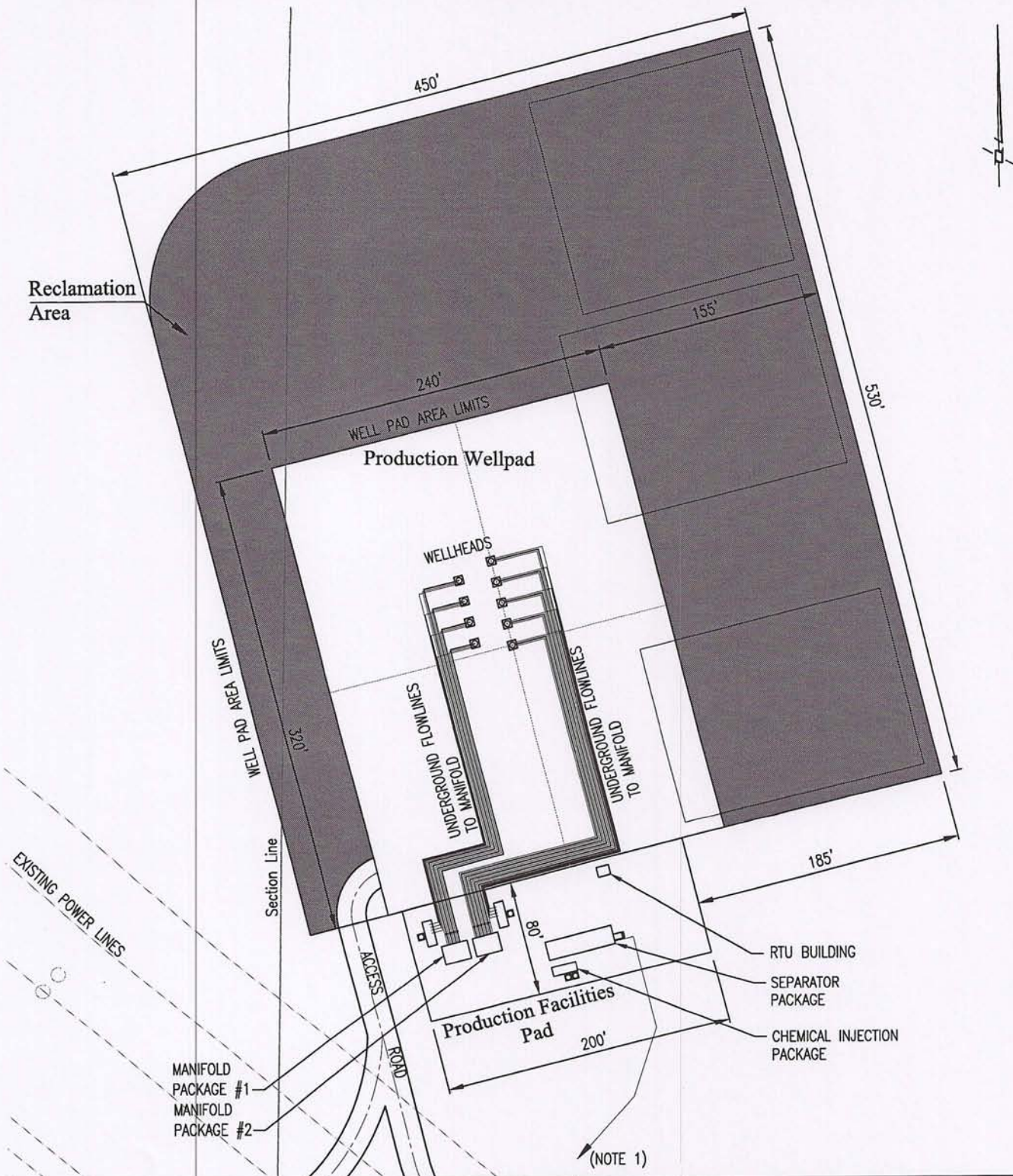
Tri State
Land Surveying, Inc.

(435) 701-2501

SHEET
4
OF 8

180 NORTH VERNAL AVE. VERNAL, UTAH 84078

Reclamation
Area



NOTES:

1. Gas and Combined Liquids Flowline to Tie-in to associated trunklines.
Reference PCU 197-34A- Topo 'D'.

Production Facilities Plot Plan PCU 197-34A Piceance Development Project

50 25 0 25 50 100 150 200 250 feet

Scale = 1" : 100'

EXXONMOBIL

Drawn by: CEL

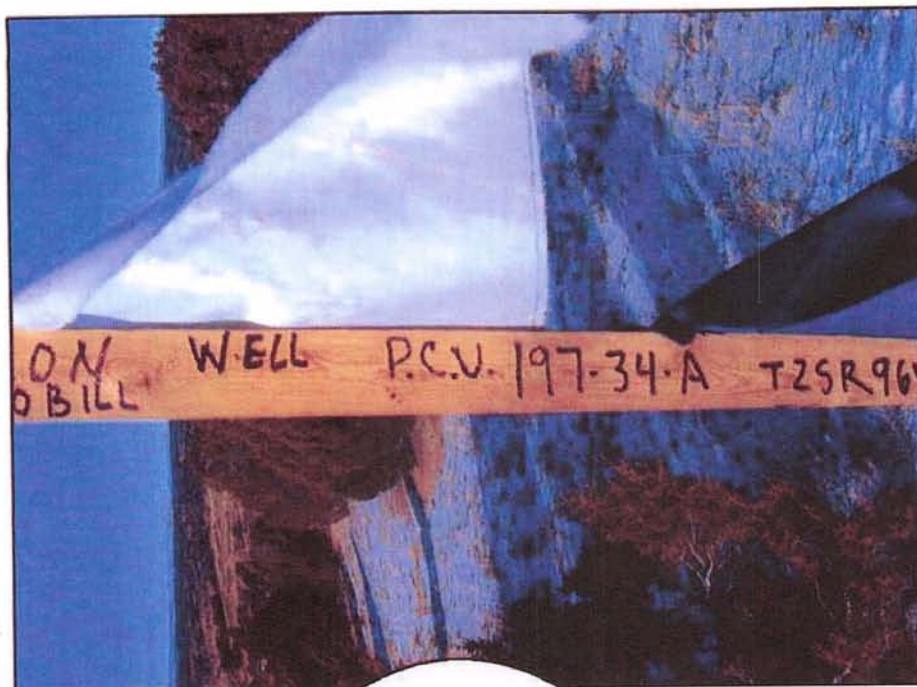
Checked by: CEL

Date: Nov. 17, 2008

Scale: 1":100'

Dwg No. WP197-34A-08-005

REV.	DATE	REVISION DESCRIPTION	DRAWN	CHECKED	APPROVED
B	29 Jan 09	Modify Wellpad Entry	CEL	CEL	WFD
A	17 Nov 08	Preliminary	CEL	CEL	WFD



CENTER STAKE

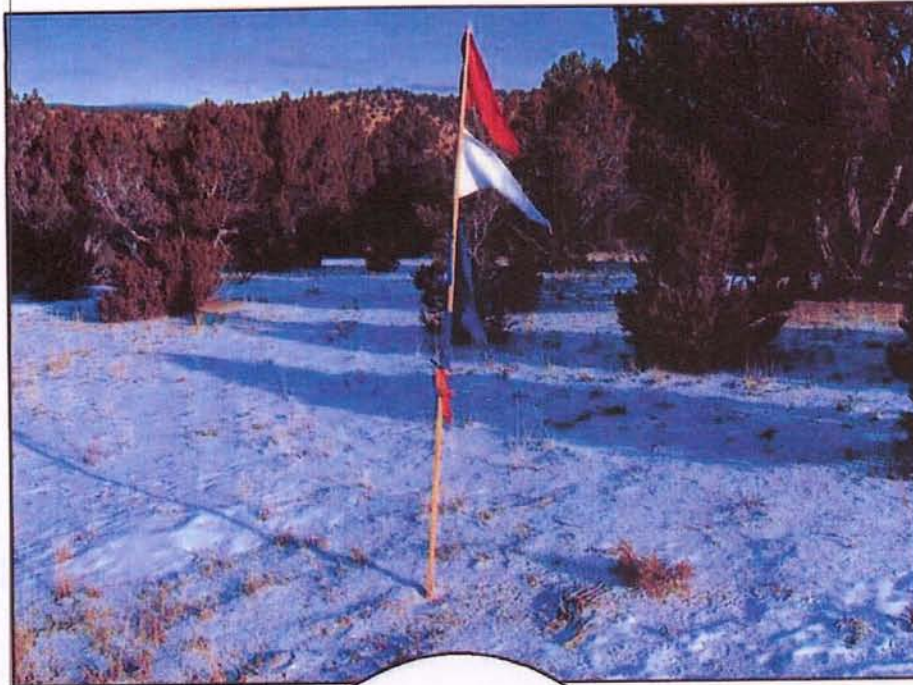
ExxonMobil Oil
Corporation
Piceance Creek Unit
197-34A

Date Photographed: 01/12/2006

Date Drawn: 04/28/2006

Drawn By: mw

Tri-State
Land Surveying Inc.
(435) 781-2501
180 North Vernal Ave. Vernal, Utah 84078



NORTH

ExxonMobil Oil
Corporation
Piceance Creek Unit
197-34A

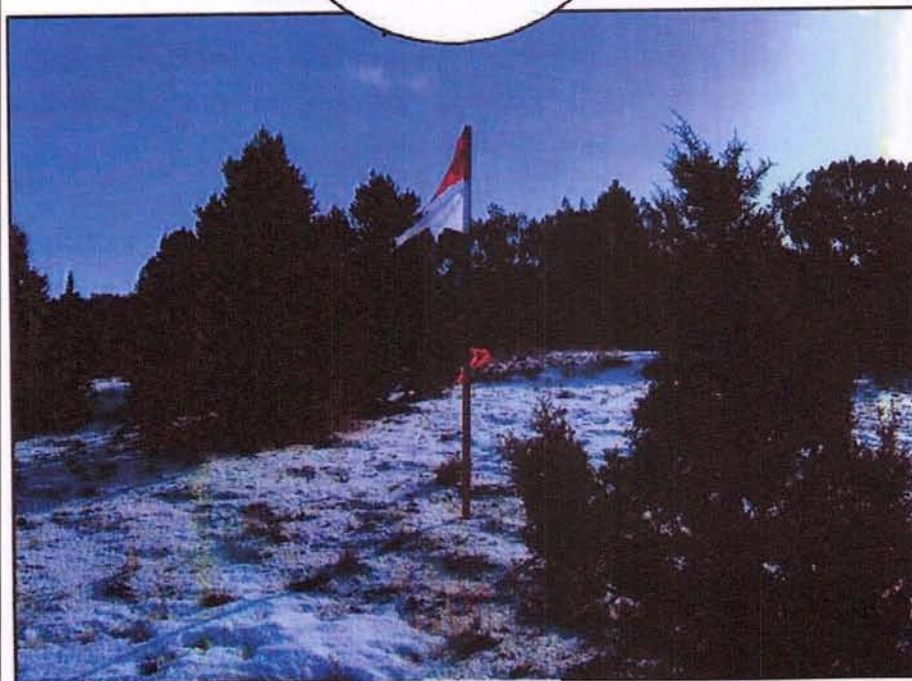
Date Photographed: 01/12/2006

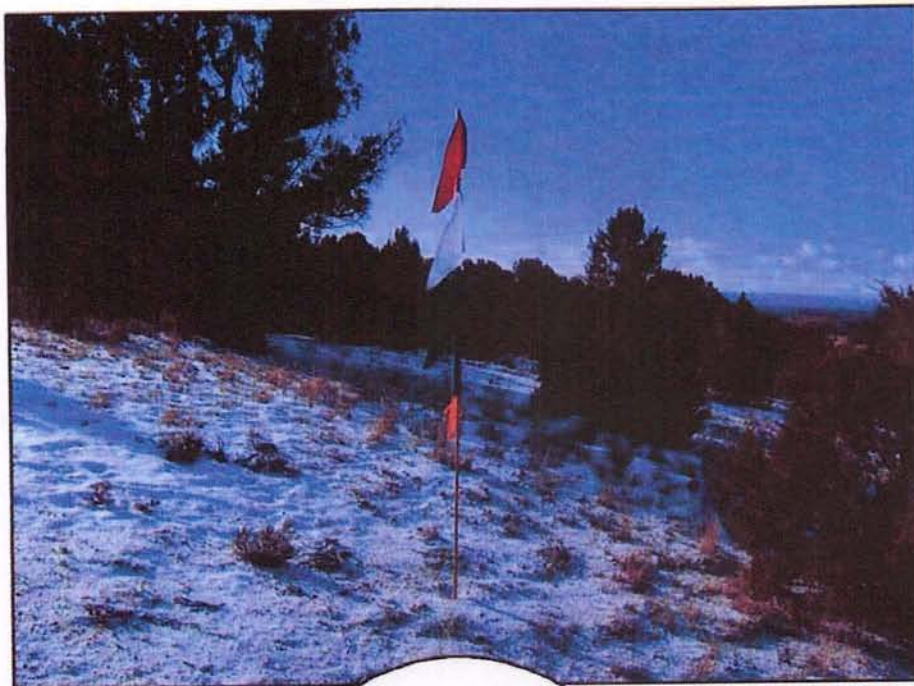
Date Drawn: 04/28/2006

Drawn By: mw

Tri-State
Land Surveying Inc.
(435) 781-2501
180 North Vernal Ave. Vernal, Utah 84078

EAST





SOUTH

ExxonMobil Oil
Corporation
Piceance Creek Unit
197-34A

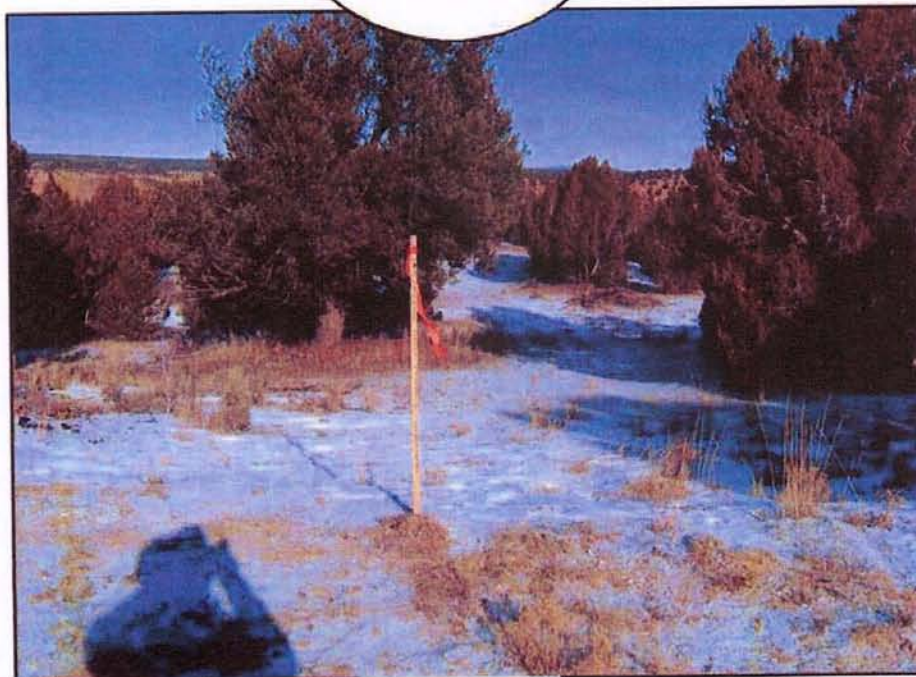
Date Photographed: 01/12/2006

Date Drawn: 04/28/2006

Drawn By: mw

Tri-State
Land Surveying Inc.
(435) 781-2501
180 North Vernal Ave. Vernal, Utah 84078

WEST

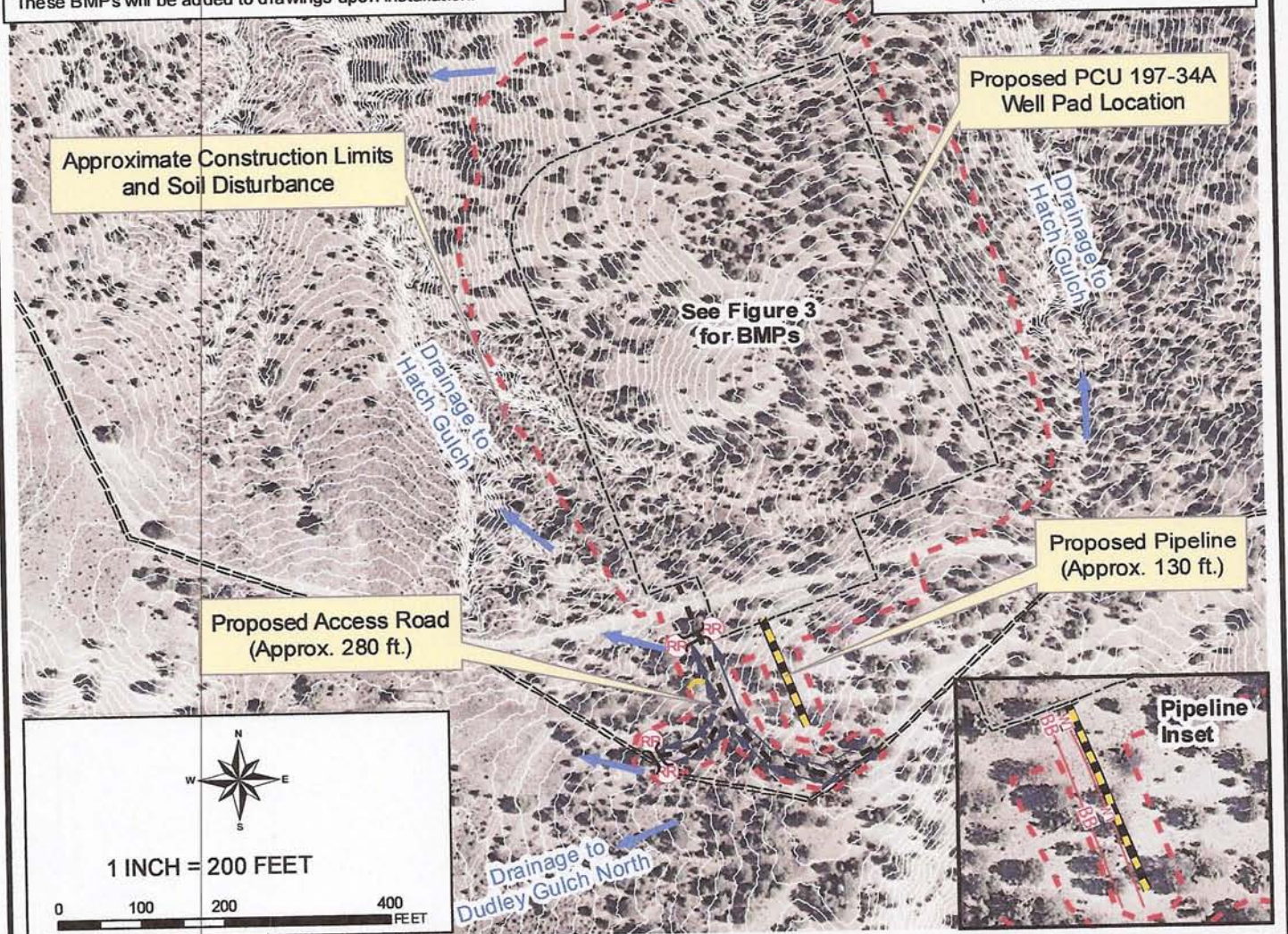


NOTES:

1. Locations of well pad, pipeline and access road are based on survey information from Tri-State Survey Inc. (01/16/06) and ExxonMobil (06/17/08 and 07/01/08).
2. Construction limits contain BMPs, pipelines, and stockpiles. Estimated disturbance including BMPs is 9.8 acres for the well pad, 0.3 acres for the access road, and 0.1 acres for the pipeline. Total disturbance is 10.2 acres.
3. BMP symbols used on this drawing are conceptual and are intended to indicate a specific type of BMP. They do not represent the actual size and/or shape of the BMP. Refer to Appendix F of the USWMP for guidance on BMP spacing.
4. Wing ditch spacing will be determined in the field during construction.
5. There are no known wetlands or springs in close proximity to the site.
6. Reclamation, associated with the pipeline, will include seeding, mulching, crimping, water bars, spreading woody debris and on steep slopes (3:1 or greater) installing erosion control blankets. These BMPs will be added to drawings upon installation.

Legend

- Rip Rap
- Wing Ditch
- Flow Direction
- Drainage Ditch
- Wattle
- Brush Barrier
- Proposed Road
- Existing Road/Two-Track
- Construction Limits
- PCU197-34A Wellpad
- Fragile Soils
(Source: BLM with Disclaimer)



01/29/09 GIS; Z:\Project Files\72-99\801-111\801-111.412\CAD-GIS\GIS\Task 025\Figure_2.mxd

Photo Source and Contours: LIDAR 2007

WWE

WRIGHT WATER ENGINEERS, INC.
2490 W 26TH AVE 100A
DENVER, CO. 80211
(303) 480-1700

RIO BLANCO COUNTY, COLORADO
PICEANCE CREEK UNIT 197-34A
APPROXIMATE CONSTRUCTION LIMITS
AND SOIL DISTURBANCE MAP
SECTION 34, TOWNSHIP 1S, RANGE 97W

REVISION:

1 EEB 1/29/09

REVISED
FIGURE

2

NOTES

1. LOCATIONS OF WELL PAD FEATURES ARE BASED ON SURVEY INFORMATION FROM TRI STATE LAND SURVEYING, INC.
2. CUT MATERIAL IS RE-USED AS FILL MATERIAL OR WASTED ON SITE.
3. BMP SYMBOLS USED ON DRAWING ARE CONCEPTUAL AND ARE INTENDED TO INDICATE A SPECIFIC TYPE OF BMP. THEY DO NOT REPRESENT THE ACTUAL SIZE AND OR SHAPE OF THE BMP. REFER TO APPENDIX F OF THE USWP FOR GUIDANCE ON BMP SPACING.
4. CONTOURS REPRESENT PRE-CONSTRUCTION ELEVATIONS.
5. WELL PAD WILL BE CONSTRUCTED TO BE RELATIVELY FLAT WITH SIDESLOPES. SIDESLOPES ARE INDICATED BY FILL AND CUT ELEVATIONS.
6. THERE ARE NO KNOWN WETLANDS, SPRINGS OR OTHER SURFACE WATERS IN CLOSE PROXIMITY TO THIS SITE.
7. TEMPORARY STABILIZATION WILL BE DETERMINED IN THE FIELD, IT WILL BE BASED PRIMARILY ON ROCK CONTENT AND SLOPE.

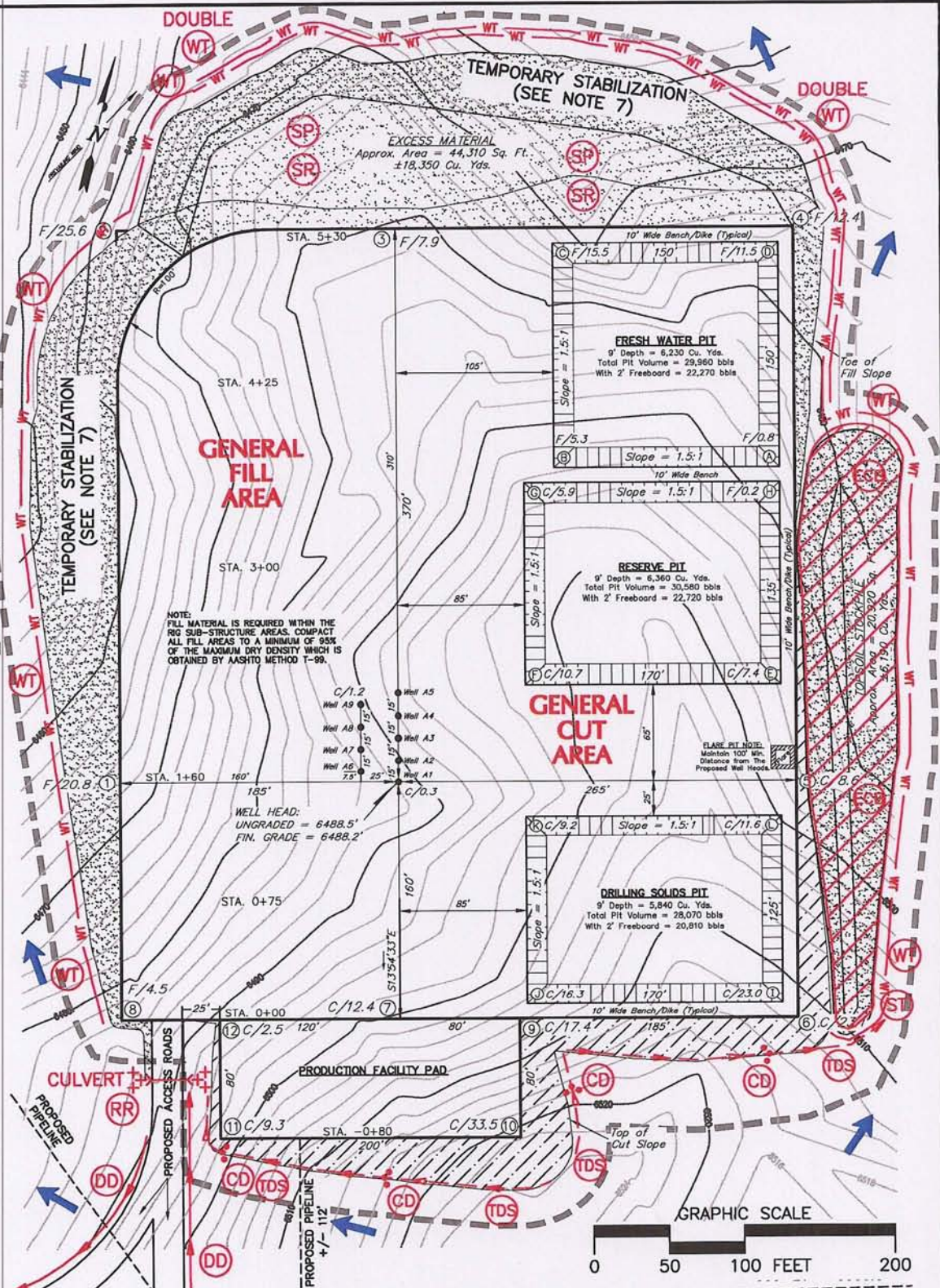
LEGEND

- CHECK DAM
- TEMPORARY DRAINAGE SWALE
- WATTLE

- EROSION CONTROL BLANKET AND TEMPORARY SEEDING

- STOCKPILE
- SURFACE ROUGHENING
- RIP RAP
- SEDIMENT TRAP

- FLOW DIRECTION
- APPROXIMATE CONSTRUCTION LIMITS



Plot Date/Time: 02/04/2009, 04:24:44 PM; Z:\PROJECT FILES\72-99\801-111\801-111.412\CAD-GIS\CAD\TASK 025\ISWMP FIG 3-FRU 197-34A REV -1.DWG-FIGURE 3

WWE

WRIGHT WATER ENGINEERS, INC.
2490 W. 26TH AVE. SUITE 100A
DENVER, CO 80211
(303)480-1700 FAX(303)480-1020

EXXONMOBIL PICEANCE
SECTION 34, TOWNSHIP 1S, RANGE 97W

PCU 197-34A

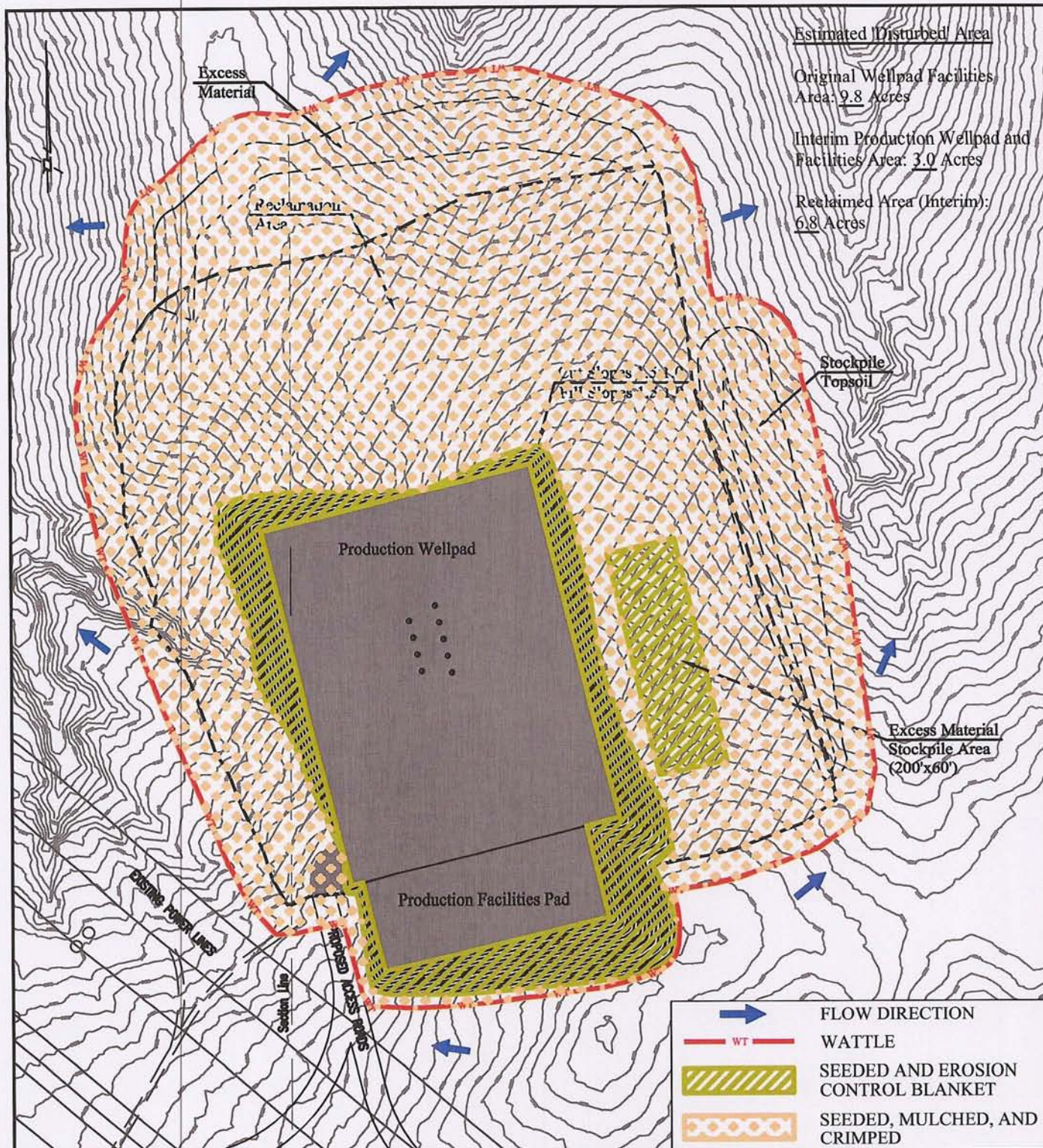
PROPOSED BMPs ISWMP DRAWING

REVISION:

1	KAL	1/30/09

REVISED
FIGURE

3



NOTES:

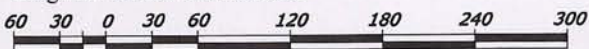
1. Reference Tri State Land Surveying Inc. grading plan dated 01-21-06.
2. Reclaimed area to be regraded to achieve approximate original contours. Original contours are shown for reference.
3. Perimeter BMPs (e.g. wattles) will remain in place as needed until final stabilization is achieved.
4. If field conditions dictate Hydromulch will be used. If Hydromulch used, seed will be applied first (at double the seed rate) then the Hydromulch will be applied.

SOURCE: EXXONMOBIL

PCU 197-34A - Interim Reclamation Plan

Date: Nov. 06, 2008

Dwg No. WP197-34A-08-006



Plot Date/Time: 02/04/2009, 04:25:00 PM; Z:\PROJECT FILES\72-99\801-111\801-111.412\CAD-GIS\CAD\TASK 025\RECLAN FIG 5-FRU 197-34A REV -1.DWG-FIGURE 5

WWE

WRIGHT WATER ENGINEERS, INC.
2490 W. 26TH AVE. SUITE 100A
DENVER, CO 80211
(303)480-1700 FAX(303)480-1020

EXXONMOBIL PICEANCE
SECTION 34, TOWNSHIP 1S, RANGE 97W
PCU 197-34A
INTERIM RECLAMATION PLAN

REVISION:

1	KAL	1/30/09

REVISED
FIGURE

5

ExxonMobil Oil Corporation
Piceance Creek Unit 197-34A
Section 34, T1S, R97W, 6th P.M.

Beginning at the city of Rifle Colorado, proceed in a northerly direction on highway 13 approximately 18.8 miles to the junction at Rio Blanco. Turn left and proceed in a northwesterly direction approximately 17.8 miles to the junction of this road and an existing road to the northeast. Turn right and proceed northeasterly for approximately 4.8 miles to a fork in the road. Turn left and proceed westerly for approximately 0.7 miles to a fork in the road. Turn left and proceed southwesterly for approximately 3.3 miles to a fork in the road. Keep to the right and proceed northwesterly approximately 0.6 miles to the beginning of an existing two-track. Turn right onto two-track and proceed northwesterly for approximately $\pm 5,268'$ to the proposed Hatch Gulch Collector Road. Proceed northwesterly along the Hatch Gulch Collector Road approximately 1.1 miles to the proposed access for the PCU 197-34B Well pad. Continue northwesterly along the Hatch Gulch Collector Road approximately 1.0 miles to the beginning of the proposed access for the PCU 197-34A Well Pad. Turn right and proceed northerly for approximately $\pm 360'$ to the proposed PCU 197-34A Well Pad.