

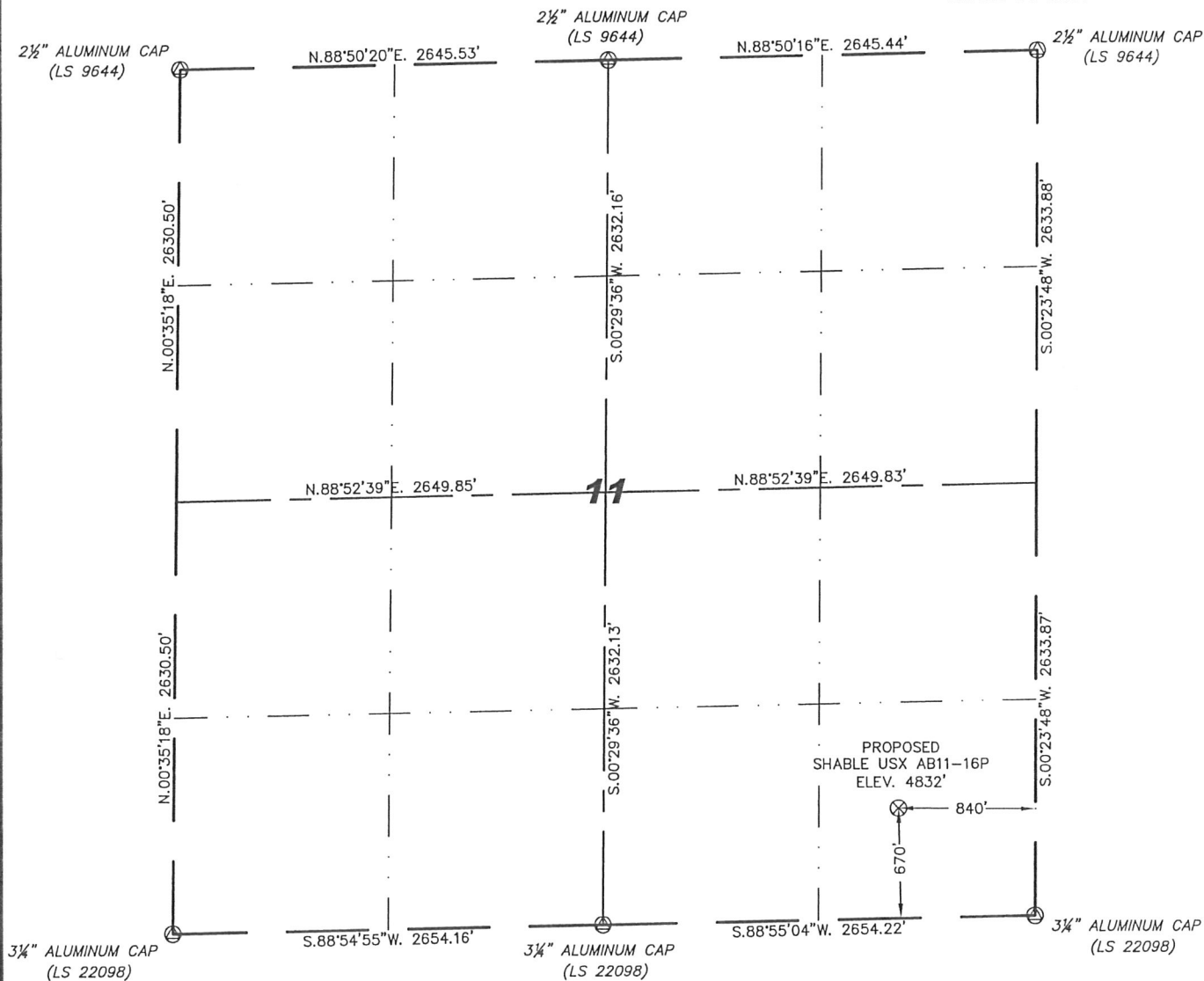
Steil Surveying Services, LLC

1102 West 19th Street P.O. BOX 2073

Cheyenne, Wyoming 82009

WELL LOCATION CERTIFICATE
THIS MAP DOES NOT REPRESENT A BOUNDARY SURVEY

SECTION 11
TOWNSHIP 7 NORTH
RANGE 64 WEST



0 1000
Scale: 1" = 1000'

IN ACCORDANCE WITH A REQUEST FROM ERIK VAN DECAR - NOBLE ENERGY INC, STEIL SURVEYING SERVICES, LLC HAS DETERMINED THE LOCATION OF THE SHABLE USX AB11-16P WELL TO BE 670' FSL, 840' FEL, AS MEASURED AT NINETY (90) DEGREES FROM THE SECTION LINES, SECTION 11, TOWNSHIP 7 NORTH, RANGE 64 WEST, 6TH PRINCIPLE MERIDIAN, WELD COUNTY, COLORADO.

I HEREBY CERTIFY THAT THIS WELL LOCATION CERTIFICATE WAS PREPARED BY ME, OR UNDER MY DIRECT SUPERVISION, THAT THE FIELD WORK WAS COMPLETED ON 12/03/2009, FOR AND ON BEHALF OF NOBLE ENERGY INC, THAT IT IS NOT A LAND SURVEY PLAT OR AN IMPROVEMENT SURVEY PLAT, AND THAT IT IS NOT TO BE RELIED UPON FOR ESTABLISHMENT OF FENCE, BUILDING, OR OTHER FUTURE IMPROVEMENT LINES.

NOTES:

- 1) BASIS OF BEARINGS FOR THIS MAP ARE BASED UPON GPS OBSERVATIONS MADE ON 03/12/2008 BETWEEN MONUMENTS LOCATED AT THE SOUTHEAST SECTION CORNER AND THE NORTHEAST SECTION CORNER OF SAID SECTION AND WITH ALL BEARINGS SHOWN HEREON RELATIVE THERETO.
- 2) ELEVATIONS ARE BASED UPON NGS OPUS SOLUTION NAVD 88 DATUM.
- 3) THE NEAREST EXISTING WELL IS: NOT IN THIS QUARTER.
- 4) SEE VISIBLE IMPROVEMENTS EXHIBIT FOR ALL IMPROVEMENTS WITHIN 400'.
- 5) THE LOCATION FALLS IN PASTURE LAND.

LATITUDE & LONGITUDE (NAD 83 SURFACE HOLE):
LATITUDE: N 40.58237°
LONGITUDE: W 104.51002°
PDOP: 1.9
QUARTER-QUARTER: SE/4SE/4
NEAREST PROPERTY LINE: 646' TO THE NORTH

LEGEND

- (A) FOUND SURVEY MONUMENT PER MONUMENT RECORD - EXCEPTIONS NOTED.
- (C) CALCULATED DIMENSION

NOTICE: According to Colorado law you MUST commence any legal action based upon any defect in this W.L.C. within three years after you first discover such defect. In no event may any action based upon any defect in this W.L.C. be commenced more than ten years from this sold date of the certification shown hereon.



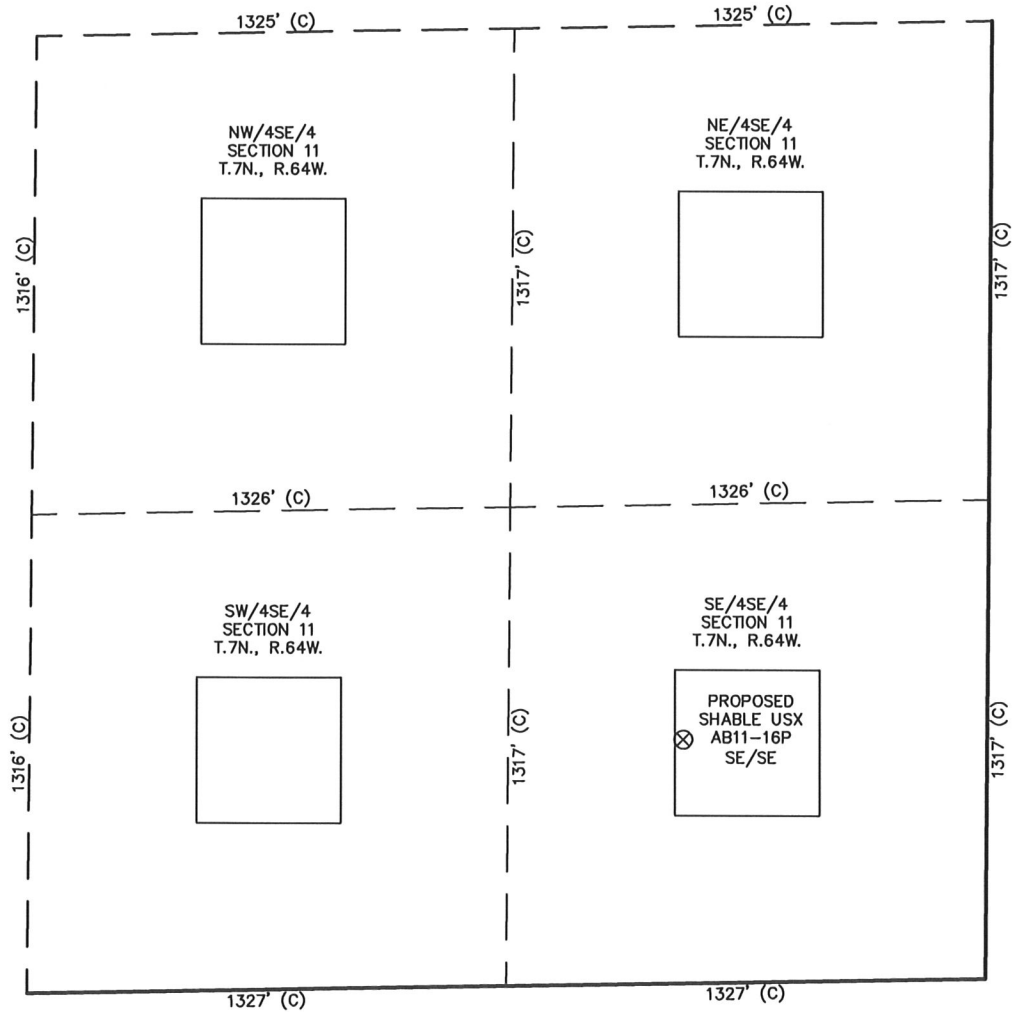
Completed 12/08/2009

David C. Holmes
Professional Land Surveyor Registration No. 32828
State of Colorado

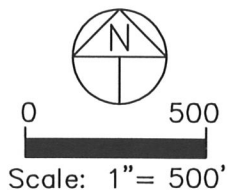
JOB #: 09086

SITE SKETCH – SHABLE USX AB11-16P

SECTION 11
TOWNSHIP 7 NORTH
RANGE 64 WEST



THERE ARE NO EXISTING WELLS IN THIS QUARTER



NOTES:

- 1) THIS SKETCH DOES NOT REPRESENT A BOUNDARY SURVEY.
- 2) THE DATUM FOR THE LATITUDES AND LONGITUDES ON THIS SKETCH IS NAD83.