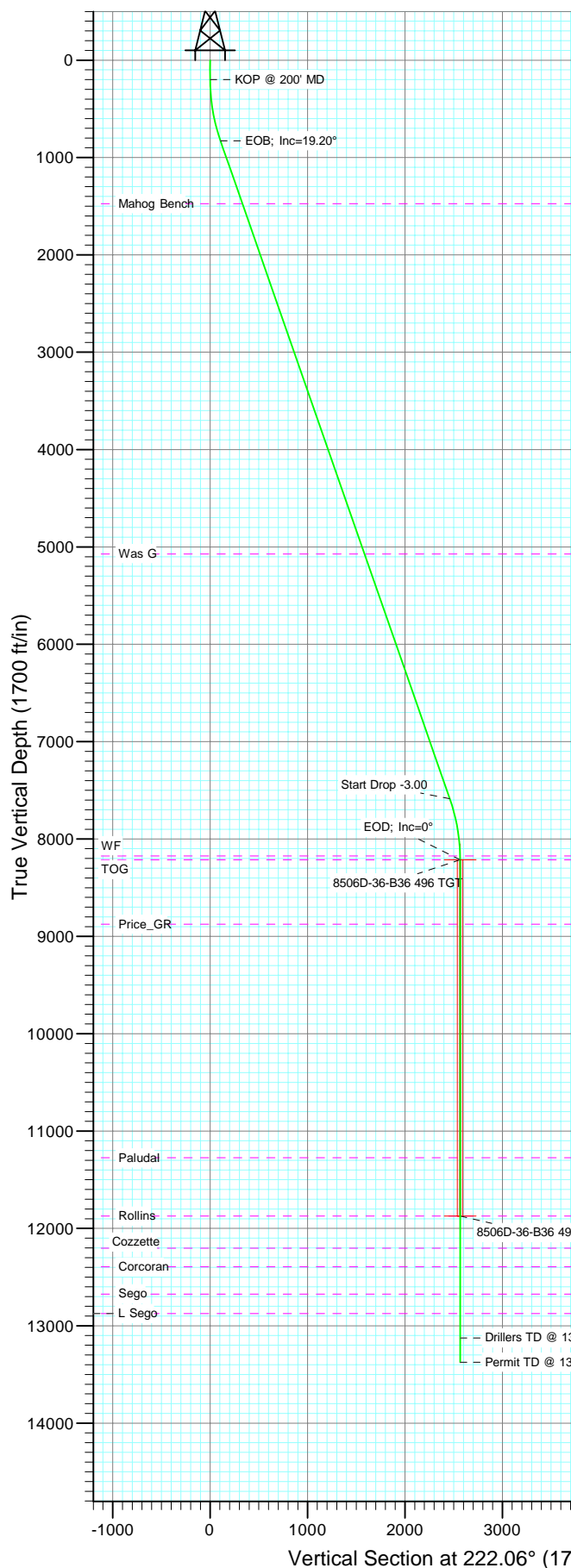
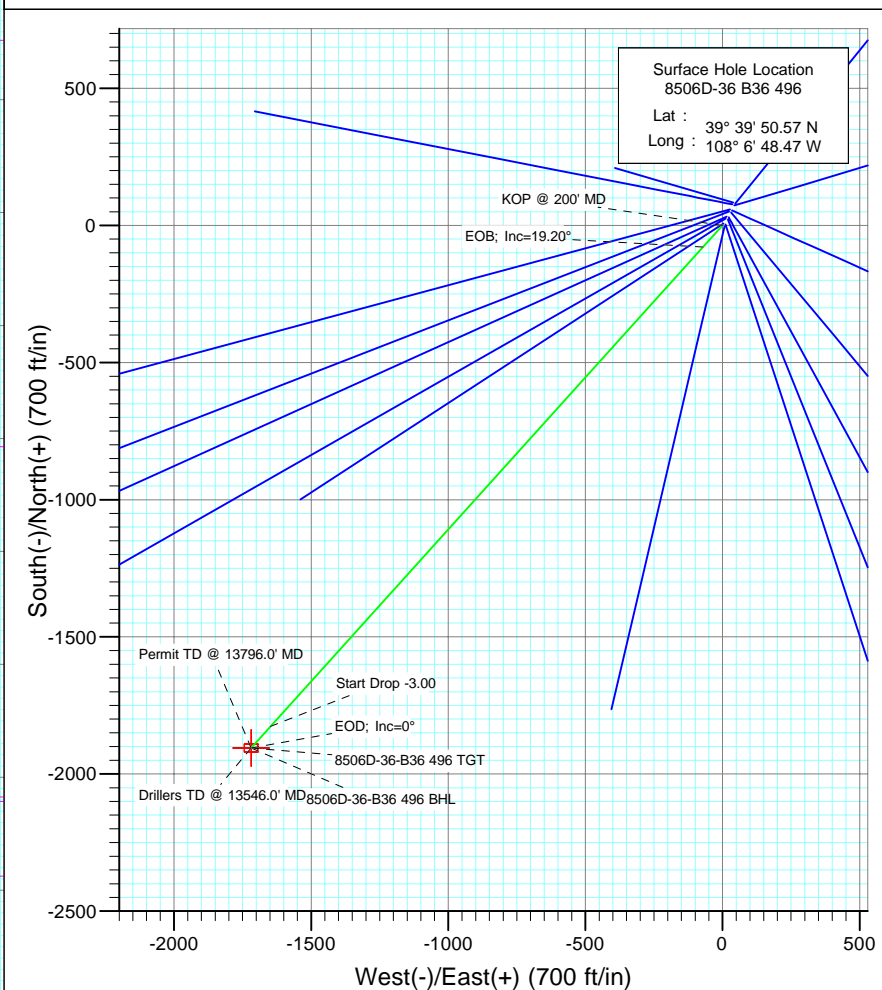




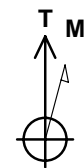
Project: Story Gulch
 Site: S36-T4S-R96W (B36 496)
 Well: 8506D-36 B36 496
 Wellbore: DD
 Design: Plan #1



SECTION DETAILS										
Sec	MD	Inc	Azi	TVD	+N/-S	+E/-W	DLeg	TFace	VSec	Target
1	0.0	0.00	0.00	0.0	0.0	0.0	0.00	0.00	0.0	
2	200.0	0.00	0.00	200.0	0.0	0.0	0.00	0.00	0.0	
3	840.1	19.20	222.06	828.2	-78.9	-71.2	3.00	222.06	106.3	
4	7995.9	19.20	222.06	7585.8	-1826.4	-1647.8	0.00	0.00	2459.9	
5	8636.0	0.00	0.00	8214.0	-1905.3	-1719.0	3.00	180.00	2566.2	8506D-36-B36 496 TGT
6	12296.0	0.00	0.00	11874.0	-1905.3	-1719.0	0.00	0.00	2566.2	8506D-36-B36 496 BHL
7	13546.0	0.00	0.00	13124.0	-1905.3	-1719.0	0.00	0.00	2566.2	
8	13796.0	0.00	0.00	13374.0	-1905.3	-1719.0	0.00	0.00	2566.2	



Bottom Hole Location
 8506D-36 B36 496
 Lat : 39 39 31.74 N
 Long. : 108 7 10.45 W



Azimuths to True North
 Magnetic North: 10.63°
 Magnetic Field
 Strength: 52514.2snT
 Dip Angle: 65.91°
 Date: 9/1/2009
 Model: IGRF200510

FORMATION TOP DETAILS				
TVDPath	MDPath	Formation		
1474.0	1524.0	Mahog Bench		
5074.0	5336.1	Was G		
8174.0	8596.0	WF		
8214.0	8636.0	TOG		
8874.0	9296.0	Price_GR		
11274.0	11696.0	Paludal		
11874.0	12296.0	Rollins		
12204.0	12626.0	Cozzette		
12394.0	12816.0	Corcoran		
12674.0	13096.0	Sego		
12874.0	13296.0	L Sego		

DESIGN DETAILS: Plan #1				
95XXX: BH				
KBE @ 8374.0ft (Original Well Elev)				
Target	Azimuth	Origin Type/N/S	E/W	TVD
8506D-36-B36 496 BHL	222.06	Slot	0.0	0.0

Directional Plus

Planning Report

Database:	EDM 2003.21 US Multi User Db	Local Co-ordinate Reference:	Well 8506D-36 B36 496
Company:	EnCana Oil & Gas (USA) Inc	TVD Reference:	KBE @ 8374.0ft (Original Well Elev)
Project:	Story Gulch	MD Reference:	KBE @ 8374.0ft (Original Well Elev)
Site:	S36-T4S-R96W (B36 496)	North Reference:	True
Well:	8506D-36 B36 496	Survey Calculation Method:	Minimum Curvature
Wellbore:	DD		
Design:	Plan #1		

Project	Story Gulch		
Map System:	US State Plane 1983	System Datum:	Mean Sea Level
Geo Datum:	North American Datum 1983		
Map Zone:	Colorado Central Zone		

Site		S36-T4S-R96W (B36 496)			
Site Position:		Northing:	1,677,422.27 ft	Latitude:	39° 39' 51.36 N
From:	Lat/Long	Easting:	2,264,394.80 ft	Longitude:	108° 6' 47.88 W
Position Uncertainty:	0.0 ft	Slot Radius:	in	Grid Convergence:	-1.65 °

Well	8506D-36 B36 496					
Well Position	+N/-S	0.0 ft	Northing:	1,677,343.79 ft	Latitude:	39° 39' 50.57 N
	+E/-W	0.0 ft	Easting:	2,264,346.16 ft	Longitude:	108° 6' 48.47 W
Position Uncertainty		0.0 ft	Wellhead Elevation:	ft	Ground Level:	8,352.0 ft

Wellbore	DD				
Magnetics	Model Name	Sample Date	Declination	Dip Angle	Field Strength
			(°)	(°)	(nT)
	IGRF200510	9/1/2009	10.63	65.91	52,514

Design	Plan #1				
Audit Notes:					
Version:	Phase:	PLAN	Tie On Depth:	0.0	
Vertical Section:	Depth From (TVD)	+N/-S	+E/-W	Direction	
	(ft)	(ft)	(ft)	(°)	
	0.0	0.0	0.0	222.06	

Plan Sections										
Measured Depth (ft)	Inclination (°)	Azimuth (°)	Vertical Depth (ft)	+N/-S (ft)	+E/-W (ft)	Dogleg Rate (°/100ft)	Build Rate (°/100ft)	Turn Rate (°/100ft)	TFO (°)	Target
0.0	0.00	0.00	0.0	0.0	0.0	0.00	0.00	0.00	0.00	
200.0	0.00	0.00	200.0	0.0	0.0	0.00	0.00	0.00	0.00	
840.1	19.20	222.06	828.2	-78.9	-71.2	3.00	3.00	0.00	222.06	
7,995.9	19.20	222.06	7,585.8	-1,826.4	-1,647.8	0.00	0.00	0.00	0.00	
8,636.0	0.00	0.00	8,214.0	-1,905.3	-1,719.0	3.00	-3.00	0.00	180.00	8506D-36-B36 496 TC
12,296.0	0.00	0.00	11,874.0	-1,905.3	-1,719.0	0.00	0.00	0.00	0.00	8506D-36-B36 496 BI
13,546.0	0.00	0.00	13,124.0	-1,905.3	-1,719.0	0.00	0.00	0.00	0.00	
13,796.0	0.00	0.00	13,374.0	-1,905.3	-1,719.0	0.00	0.00	0.00	0.00	

Directional Plus

Planning Report

Database:	EDM 2003.21 US Multi User Db	Local Co-ordinate Reference:	Well 8506D-36 B36 496
Company:	EnCana Oil & Gas (USA) Inc	TVD Reference:	KBE @ 8374.0ft (Original Well Elev)
Project:	Story Gulch	MD Reference:	KBE @ 8374.0ft (Original Well Elev)
Site:	S36-T4S-R96W (B36 496)	North Reference:	True
Well:	8506D-36 B36 496	Survey Calculation Method:	Minimum Curvature
Wellbore:	DD		
Design:	Plan #1		

Planned Survey

Measured Depth (ft)	Inclination (°)	Azimuth (°)	Vertical Depth (ft)	+N/-S (ft)	+E/-W (ft)	Vertical Section (ft)	Dogleg Rate (°/100ft)	Build Rate (°/100ft)	Comments / Formations
0.0	0.00	0.00	0.0	0.0	0.0	0.0	0.00	0.00	
100.0	0.00	0.00	100.0	0.0	0.0	0.0	0.00	0.00	
200.0	0.00	0.00	200.0	0.0	0.0	0.0	0.00	0.00	KOP @ 200' MD
300.0	3.00	222.06	300.0	-1.9	-1.8	2.6	3.00	3.00	
400.0	6.00	222.06	399.6	-7.8	-7.0	10.5	3.00	3.00	
500.0	9.00	222.06	498.8	-17.5	-15.8	23.5	3.00	3.00	
600.0	12.00	222.06	597.1	-31.0	-28.0	41.7	3.00	3.00	
700.0	15.00	222.06	694.3	-48.3	-43.6	65.1	3.00	3.00	
800.0	18.00	222.06	790.2	-69.4	-62.6	93.5	3.00	3.00	
840.1	19.20	222.06	828.2	-78.9	-71.2	106.3	3.00	3.00	EOB; Inc=19.20°
900.0	19.20	222.06	884.8	-93.5	-84.4	126.0	0.00	0.00	
1,000.0	19.20	222.06	979.2	-117.9	-106.4	158.9	0.00	0.00	
1,100.0	19.20	222.06	1,073.6	-142.4	-128.4	191.8	0.00	0.00	
1,200.0	19.20	222.06	1,168.1	-166.8	-150.5	224.6	0.00	0.00	
1,300.0	19.20	222.06	1,262.5	-191.2	-172.5	257.5	0.00	0.00	
1,400.0	19.20	222.06	1,356.9	-215.6	-194.5	290.4	0.00	0.00	
1,500.0	19.20	222.06	1,451.4	-240.1	-216.6	323.3	0.00	0.00	
1,524.0	19.20	222.06	1,474.0	-245.9	-221.9	331.2	0.00	0.00	Mahog Bench
1,600.0	19.20	222.06	1,545.8	-264.5	-238.6	356.2	0.00	0.00	
1,700.0	19.20	222.06	1,640.2	-288.9	-260.6	389.1	0.00	0.00	
1,800.0	19.20	222.06	1,734.7	-313.3	-282.7	422.0	0.00	0.00	
1,900.0	19.20	222.06	1,829.1	-337.7	-304.7	454.9	0.00	0.00	
2,000.0	19.20	222.06	1,923.5	-362.2	-326.7	487.8	0.00	0.00	
2,100.0	19.20	222.06	2,018.0	-386.6	-348.8	520.7	0.00	0.00	
2,200.0	19.20	222.06	2,112.4	-411.0	-370.8	553.6	0.00	0.00	
2,300.0	19.20	222.06	2,206.9	-435.4	-392.8	586.4	0.00	0.00	
2,400.0	19.20	222.06	2,301.3	-459.8	-414.9	619.3	0.00	0.00	
2,500.0	19.20	222.06	2,395.7	-484.3	-436.9	652.2	0.00	0.00	
2,600.0	19.20	222.06	2,490.2	-508.7	-458.9	685.1	0.00	0.00	
2,700.0	19.20	222.06	2,584.6	-533.1	-481.0	718.0	0.00	0.00	
2,800.0	19.20	222.06	2,679.0	-557.5	-503.0	750.9	0.00	0.00	
2,900.0	19.20	222.06	2,773.5	-582.0	-525.0	783.8	0.00	0.00	
3,000.0	19.20	222.06	2,867.9	-606.4	-547.1	816.7	0.00	0.00	
3,100.0	19.20	222.06	2,962.3	-630.8	-569.1	849.6	0.00	0.00	
3,200.0	19.20	222.06	3,056.8	-655.2	-591.1	882.5	0.00	0.00	
3,300.0	19.20	222.06	3,151.2	-679.6	-613.2	915.4	0.00	0.00	
3,400.0	19.20	222.06	3,245.7	-704.1	-635.2	948.2	0.00	0.00	
3,500.0	19.20	222.06	3,340.1	-728.5	-657.2	981.1	0.00	0.00	
3,600.0	19.20	222.06	3,434.5	-752.9	-679.3	1,014.0	0.00	0.00	
3,700.0	19.20	222.06	3,529.0	-777.3	-701.3	1,046.9	0.00	0.00	
3,800.0	19.20	222.06	3,623.4	-801.7	-723.3	1,079.8	0.00	0.00	
3,900.0	19.20	222.06	3,717.8	-826.2	-745.4	1,112.7	0.00	0.00	
4,000.0	19.20	222.06	3,812.3	-850.6	-767.4	1,145.6	0.00	0.00	
4,100.0	19.20	222.06	3,906.7	-875.0	-789.4	1,178.5	0.00	0.00	
4,200.0	19.20	222.06	4,001.1	-899.4	-811.5	1,211.4	0.00	0.00	
4,300.0	19.20	222.06	4,095.6	-923.8	-833.5	1,244.3	0.00	0.00	
4,400.0	19.20	222.06	4,190.0	-948.3	-855.5	1,277.2	0.00	0.00	
4,500.0	19.20	222.06	4,284.4	-972.7	-877.6	1,310.1	0.00	0.00	
4,600.0	19.20	222.06	4,378.9	-997.1	-899.6	1,342.9	0.00	0.00	
4,700.0	19.20	222.06	4,473.3	-1,021.5	-921.6	1,375.8	0.00	0.00	
4,800.0	19.20	222.06	4,567.8	-1,046.0	-943.7	1,408.7	0.00	0.00	
4,900.0	19.20	222.06	4,662.2	-1,070.4	-965.7	1,441.6	0.00	0.00	

Directional Plus

Planning Report

Database:	EDM 2003.21 US Multi User Db	Local Co-ordinate Reference:	Well 8506D-36 B36 496
Company:	EnCana Oil & Gas (USA) Inc	TVD Reference:	KBE @ 8374.0ft (Original Well Elev)
Project:	Story Gulch	MD Reference:	KBE @ 8374.0ft (Original Well Elev)
Site:	S36-T4S-R96W (B36 496)	North Reference:	True
Well:	8506D-36 B36 496	Survey Calculation Method:	Minimum Curvature
Wellbore:	DD		
Design:	Plan #1		

Planned Survey

Measured Depth (ft)	Inclination (°)	Azimuth (°)	Vertical Depth (ft)	+N/-S (ft)	+E/-W (ft)	Vertical Section (ft)	Dogleg Rate (°/100ft)	Build Rate (°/100ft)	Comments / Formations
5,000.0	19.20	222.06	4,756.6	-1,094.8	-987.7	1,474.5	0.00	0.00	
5,100.0	19.20	222.06	4,851.1	-1,119.2	-1,009.8	1,507.4	0.00	0.00	
5,200.0	19.20	222.06	4,945.5	-1,143.6	-1,031.8	1,540.3	0.00	0.00	
5,300.0	19.20	222.06	5,039.9	-1,168.1	-1,053.8	1,573.2	0.00	0.00	
5,336.1	19.20	222.06	5,074.0	-1,176.9	-1,061.8	1,585.0	0.00	0.00	Was G
5,400.0	19.20	222.06	5,134.4	-1,192.5	-1,075.9	1,606.1	0.00	0.00	
5,500.0	19.20	222.06	5,228.8	-1,216.9	-1,097.9	1,639.0	0.00	0.00	
5,600.0	19.20	222.06	5,323.2	-1,241.3	-1,119.9	1,671.9	0.00	0.00	
5,700.0	19.20	222.06	5,417.7	-1,265.7	-1,142.0	1,704.7	0.00	0.00	
5,800.0	19.20	222.06	5,512.1	-1,290.2	-1,164.0	1,737.6	0.00	0.00	
5,900.0	19.20	222.06	5,606.6	-1,314.6	-1,186.0	1,770.5	0.00	0.00	
6,000.0	19.20	222.06	5,701.0	-1,339.0	-1,208.1	1,803.4	0.00	0.00	
6,100.0	19.20	222.06	5,795.4	-1,363.4	-1,230.1	1,836.3	0.00	0.00	
6,200.0	19.20	222.06	5,889.9	-1,387.8	-1,252.1	1,869.2	0.00	0.00	
6,300.0	19.20	222.06	5,984.3	-1,412.3	-1,274.1	1,902.1	0.00	0.00	
6,400.0	19.20	222.06	6,078.7	-1,436.7	-1,296.2	1,935.0	0.00	0.00	
6,500.0	19.20	222.06	6,173.2	-1,461.1	-1,318.2	1,967.9	0.00	0.00	
6,600.0	19.20	222.06	6,267.6	-1,485.5	-1,340.2	2,000.8	0.00	0.00	
6,700.0	19.20	222.06	6,362.0	-1,510.0	-1,362.3	2,033.7	0.00	0.00	
6,800.0	19.20	222.06	6,456.5	-1,534.4	-1,384.3	2,066.5	0.00	0.00	
6,900.0	19.20	222.06	6,550.9	-1,558.8	-1,406.3	2,099.4	0.00	0.00	
7,000.0	19.20	222.06	6,645.4	-1,583.2	-1,428.4	2,132.3	0.00	0.00	
7,100.0	19.20	222.06	6,739.8	-1,607.6	-1,450.4	2,165.2	0.00	0.00	
7,200.0	19.20	222.06	6,834.2	-1,632.1	-1,472.4	2,198.1	0.00	0.00	
7,300.0	19.20	222.06	6,928.7	-1,656.5	-1,494.5	2,231.0	0.00	0.00	
7,400.0	19.20	222.06	7,023.1	-1,680.9	-1,516.5	2,263.9	0.00	0.00	
7,500.0	19.20	222.06	7,117.5	-1,705.3	-1,538.5	2,296.8	0.00	0.00	
7,600.0	19.20	222.06	7,212.0	-1,729.7	-1,560.6	2,329.7	0.00	0.00	
7,700.0	19.20	222.06	7,306.4	-1,754.2	-1,582.6	2,362.6	0.00	0.00	
7,800.0	19.20	222.06	7,400.8	-1,778.6	-1,604.6	2,395.5	0.00	0.00	
7,900.0	19.20	222.06	7,495.3	-1,803.0	-1,626.7	2,428.4	0.00	0.00	
7,995.9	19.20	222.06	7,585.8	-1,826.4	-1,647.8	2,459.9	0.00	0.00	Start Drop -3.00
8,000.0	19.08	222.06	7,589.7	-1,827.4	-1,648.7	2,461.2	3.00	-3.00	
8,100.0	16.08	222.06	7,685.0	-1,849.8	-1,668.9	2,491.4	3.00	-3.00	
8,200.0	13.08	222.06	7,781.8	-1,868.5	-1,685.8	2,516.6	3.00	-3.00	
8,300.0	10.08	222.06	7,879.8	-1,883.4	-1,699.2	2,536.7	3.00	-3.00	
8,400.0	7.08	222.06	7,978.6	-1,894.5	-1,709.2	2,551.6	3.00	-3.00	
8,500.0	4.08	222.06	8,078.1	-1,901.7	-1,715.7	2,561.3	3.00	-3.00	
8,596.0	1.20	222.06	8,174.0	-1,905.0	-1,718.7	2,565.7	3.00	-3.00	WF
8,600.0	1.08	222.06	8,178.0	-1,905.1	-1,718.8	2,565.8	3.00	-3.00	
8,636.0	0.00	0.00	8,214.0	-1,905.3	-1,719.0	2,566.2	3.00	-3.00	EOD; Inc=0° - TOG - 8506D-36-B36 496 TGT
8,700.0	0.00	0.00	8,278.0	-1,905.3	-1,719.0	2,566.2	0.00	0.00	
8,800.0	0.00	0.00	8,378.0	-1,905.3	-1,719.0	2,566.2	0.00	0.00	
8,900.0	0.00	0.00	8,478.0	-1,905.3	-1,719.0	2,566.2	0.00	0.00	
9,000.0	0.00	0.00	8,578.0	-1,905.3	-1,719.0	2,566.2	0.00	0.00	
9,100.0	0.00	0.00	8,678.0	-1,905.3	-1,719.0	2,566.2	0.00	0.00	
9,200.0	0.00	0.00	8,778.0	-1,905.3	-1,719.0	2,566.2	0.00	0.00	
9,296.0	0.00	0.00	8,874.0	-1,905.3	-1,719.0	2,566.2	0.00	0.00	Price_GR
9,300.0	0.00	0.00	8,878.0	-1,905.3	-1,719.0	2,566.2	0.00	0.00	
9,400.0	0.00	0.00	8,978.0	-1,905.3	-1,719.0	2,566.2	0.00	0.00	
9,500.0	0.00	0.00	9,078.0	-1,905.3	-1,719.0	2,566.2	0.00	0.00	
9,600.0	0.00	0.00	9,178.0	-1,905.3	-1,719.0	2,566.2	0.00	0.00	

Directional Plus

Planning Report

Database: EDM 2003.21 US Multi User Db
Company: EnCana Oil & Gas (USA) Inc
Project: Story Gulch
Site: S36-T4S-R96W (B36 496)
Well: 8506D-36 B36 496
Wellbore: DD
Design: Plan #1

Local Co-ordinate Reference: Well 8506D-36 B36 496
TVD Reference: KBE @ 8374.0ft (Original Well Elev)
MD Reference: KBE @ 8374.0ft (Original Well Elev)
North Reference: True
Survey Calculation Method: Minimum Curvature

Planned Survey

Measured Depth (ft)	Inclination (°)	Azimuth (°)	Vertical Depth (ft)	+N/-S (ft)	+E/-W (ft)	Vertical Section (ft)	Dogleg Rate (°/100ft)	Build Rate (°/100ft)	Comments / Formations
9,700.0	0.00	0.00	9,278.0	-1,905.3	-1,719.0	2,566.2	0.00	0.00	
9,800.0	0.00	0.00	9,378.0	-1,905.3	-1,719.0	2,566.2	0.00	0.00	
9,900.0	0.00	0.00	9,478.0	-1,905.3	-1,719.0	2,566.2	0.00	0.00	
10,000.0	0.00	0.00	9,578.0	-1,905.3	-1,719.0	2,566.2	0.00	0.00	
10,100.0	0.00	0.00	9,678.0	-1,905.3	-1,719.0	2,566.2	0.00	0.00	
10,200.0	0.00	0.00	9,778.0	-1,905.3	-1,719.0	2,566.2	0.00	0.00	
10,300.0	0.00	0.00	9,878.0	-1,905.3	-1,719.0	2,566.2	0.00	0.00	
10,400.0	0.00	0.00	9,978.0	-1,905.3	-1,719.0	2,566.2	0.00	0.00	
10,500.0	0.00	0.00	10,078.0	-1,905.3	-1,719.0	2,566.2	0.00	0.00	
10,600.0	0.00	0.00	10,178.0	-1,905.3	-1,719.0	2,566.2	0.00	0.00	
10,700.0	0.00	0.00	10,278.0	-1,905.3	-1,719.0	2,566.2	0.00	0.00	
10,800.0	0.00	0.00	10,378.0	-1,905.3	-1,719.0	2,566.2	0.00	0.00	
10,900.0	0.00	0.00	10,478.0	-1,905.3	-1,719.0	2,566.2	0.00	0.00	
11,000.0	0.00	0.00	10,578.0	-1,905.3	-1,719.0	2,566.2	0.00	0.00	
11,100.0	0.00	0.00	10,678.0	-1,905.3	-1,719.0	2,566.2	0.00	0.00	
11,200.0	0.00	0.00	10,778.0	-1,905.3	-1,719.0	2,566.2	0.00	0.00	
11,300.0	0.00	0.00	10,878.0	-1,905.3	-1,719.0	2,566.2	0.00	0.00	
11,400.0	0.00	0.00	10,978.0	-1,905.3	-1,719.0	2,566.2	0.00	0.00	
11,500.0	0.00	0.00	11,078.0	-1,905.3	-1,719.0	2,566.2	0.00	0.00	
11,600.0	0.00	0.00	11,178.0	-1,905.3	-1,719.0	2,566.2	0.00	0.00	
11,696.0	0.00	0.00	11,274.0	-1,905.3	-1,719.0	2,566.2	0.00	0.00	Paludal
11,700.0	0.00	0.00	11,278.0	-1,905.3	-1,719.0	2,566.2	0.00	0.00	
11,800.0	0.00	0.00	11,378.0	-1,905.3	-1,719.0	2,566.2	0.00	0.00	
11,900.0	0.00	0.00	11,478.0	-1,905.3	-1,719.0	2,566.2	0.00	0.00	
12,000.0	0.00	0.00	11,578.0	-1,905.3	-1,719.0	2,566.2	0.00	0.00	
12,100.0	0.00	0.00	11,678.0	-1,905.3	-1,719.0	2,566.2	0.00	0.00	
12,200.0	0.00	0.00	11,778.0	-1,905.3	-1,719.0	2,566.2	0.00	0.00	
12,296.0	0.00	0.00	11,874.0	-1,905.3	-1,719.0	2,566.2	0.00	0.00	Rollins - 8506D-36-B36 496 BHL
12,300.0	0.00	0.00	11,878.0	-1,905.3	-1,719.0	2,566.2	0.00	0.00	
12,400.0	0.00	0.00	11,978.0	-1,905.3	-1,719.0	2,566.2	0.00	0.00	
12,500.0	0.00	0.00	12,078.0	-1,905.3	-1,719.0	2,566.2	0.00	0.00	
12,600.0	0.00	0.00	12,178.0	-1,905.3	-1,719.0	2,566.2	0.00	0.00	
12,626.0	0.00	0.00	12,204.0	-1,905.3	-1,719.0	2,566.2	0.00	0.00	Cozzette
12,700.0	0.00	0.00	12,278.0	-1,905.3	-1,719.0	2,566.2	0.00	0.00	
12,800.0	0.00	0.00	12,378.0	-1,905.3	-1,719.0	2,566.2	0.00	0.00	
12,816.0	0.00	0.00	12,394.0	-1,905.3	-1,719.0	2,566.2	0.00	0.00	Corcoran
12,900.0	0.00	0.00	12,478.0	-1,905.3	-1,719.0	2,566.2	0.00	0.00	
13,000.0	0.00	0.00	12,578.0	-1,905.3	-1,719.0	2,566.2	0.00	0.00	
13,096.0	0.00	0.00	12,674.0	-1,905.3	-1,719.0	2,566.2	0.00	0.00	Sego
13,100.0	0.00	0.00	12,678.0	-1,905.3	-1,719.0	2,566.2	0.00	0.00	
13,200.0	0.00	0.00	12,778.0	-1,905.3	-1,719.0	2,566.2	0.00	0.00	
13,296.0	0.00	0.00	12,874.0	-1,905.3	-1,719.0	2,566.2	0.00	0.00	L Sego
13,300.0	0.00	0.00	12,878.0	-1,905.3	-1,719.0	2,566.2	0.00	0.00	
13,400.0	0.00	0.00	12,978.0	-1,905.3	-1,719.0	2,566.2	0.00	0.00	
13,500.0	0.00	0.00	13,078.0	-1,905.3	-1,719.0	2,566.2	0.00	0.00	
13,546.0	0.00	0.00	13,124.0	-1,905.3	-1,719.0	2,566.2	0.00	0.00	Drillers TD @ 13546.0' MD
13,600.0	0.00	0.00	13,178.0	-1,905.3	-1,719.0	2,566.2	0.00	0.00	
13,700.0	0.00	0.00	13,278.0	-1,905.3	-1,719.0	2,566.2	0.00	0.00	
13,796.0	0.00	0.00	13,374.0	-1,905.3	-1,719.0	2,566.2	0.00	0.00	

Directional Plus

Planning Report

Database:	EDM 2003.21 US Multi User Db	Local Co-ordinate Reference:	Well 8506D-36 B36 496
Company:	EnCana Oil & Gas (USA) Inc	TVD Reference:	KBE @ 8374.0ft (Original Well Elev)
Project:	Story Gulch	MD Reference:	KBE @ 8374.0ft (Original Well Elev)
Site:	S36-T4S-R96W (B36 496)	North Reference:	True
Well:	8506D-36 B36 496	Survey Calculation Method:	Minimum Curvature
Wellbore:	DD		
Design:	Plan #1		

Targets									
Target Name									
- hit/miss target	Dip Angle	Dip Dir.	TVD	+N/-S	+E/-W	Northing	Easting	Latitude	Longitude
- Shape	(°)	(°)	(ft)	(ft)	(ft)	(ft)	(ft)		
8506D-36-B36 496 BHL	0.00	0.00	11,874.0	-1,905.3	-1,719.0	1,675,488.70	2,262,573.09	39° 39' 31.74 N	108° 7' 10.45 W
- plan hits target center									
- Rectangle (sides W30.0 H50.0 D0.0)									
8506D-36-B36 496 TGT	0.00	0.00	8,214.0	-1,905.3	-1,719.0	1,675,488.70	2,262,573.09	39° 39' 31.74 N	108° 7' 10.45 W
- plan hits target center									
- Point									

Formations						
Measured Depth (ft)	Vertical Depth (ft)	Name	Lithology	Dip (°)	Dip Direction (°)	
1,524.0	1,474.0	Mahog Bench		0.00		
5,336.1	5,074.0	Was G		0.00		
8,596.0	8,174.0	WF		0.00		
8,636.0	8,214.0	TOG		0.00		
9,296.0	8,874.0	Price_GR		0.00		
11,696.0	11,274.0	Paludal		0.00		
12,296.0	11,874.0	Rollins		0.00		
12,626.0	12,204.0	Cozzette		0.00		
12,816.0	12,394.0	Corcoran		0.00		
13,096.0	12,674.0	Sego		0.00		
13,296.0	12,874.0	L Sego		0.00		

Plan Annotations				
Measured Depth (ft)	Vertical Depth (ft)	Local Coordinates		Comment
		+N/-S (ft)	+E/-W (ft)	
200.0	200.0	0.0	0.0	KOP @ 200' MD
840.1	828.2	-78.9	-71.2	EOB; Inc=19.20°
7,995.9	7,585.8	-1,826.4	-1,647.8	Start Drop -3.00
8,636.0	8,214.0	-1,905.3	-1,719.0	EOD; Inc=0°
13,546.0	13,124.0	-1,905.3	-1,719.0	Drillers TD @ 13546.0' MD
13,796.0	13,374.0	-1,905.3	-1,719.0	Permit TD @ 13796.0' MD