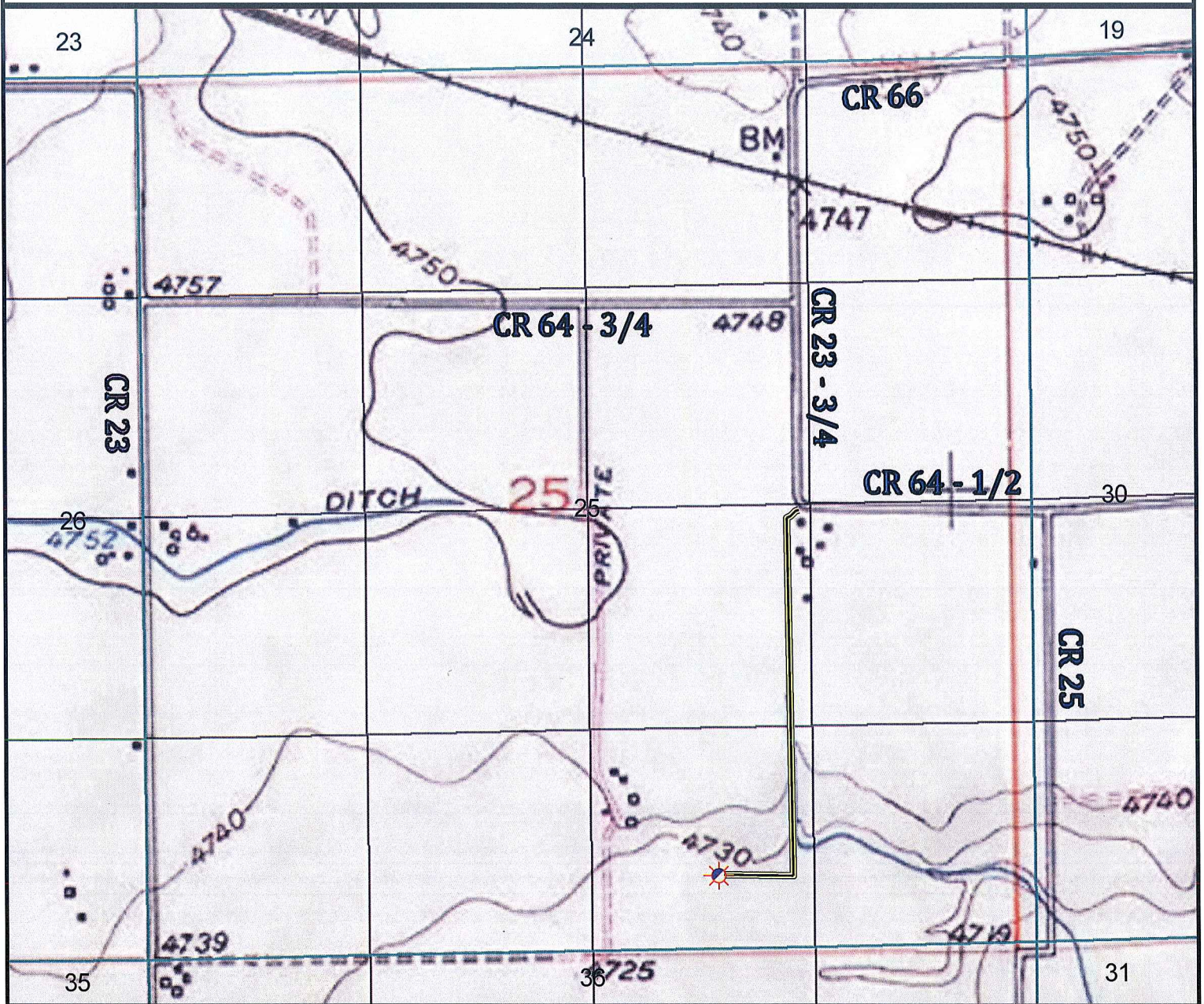


# Access Road Map



0 450 900 1,800 Feet

## Legend

- |  |                      |  |                       |
|--|----------------------|--|-----------------------|
|  | Proposed Well        |  | Building/Residence    |
|  | Existing Well        |  | Oil & Gas Equipment   |
|  | Water Well           |  | Water Body            |
|  | Pedestal             |  | Utility Box           |
|  | CattleGuard/Gate     |  | Railroad              |
|  | Bridge               |  | Fence                 |
|  | ECD                  |  | Overhead Power Line   |
|  | 1000' Radius         |  | Pipeline              |
|  | Facilities Enclosure |  | Proposed Access       |
|  |                      |  | Ditch/Canal           |
|  |                      |  | Concrete Walled Ditch |

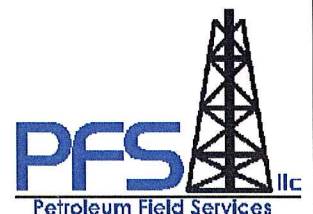
## Access Road Map

### HALL 25-34

Surface Location: T6N R67W S25

Field Date: 11/24/2009  
 Drawing Date: 11/25/2009  
 Drafter: BHF  
 Checked By: MPS  
 Revision: 1

Prepared for:  
**ORR ENERGY  
 LLC**



Use our resources to find yours!  
[www.petro-fs.com](http://www.petro-fs.com)

1801 W. 13th Ave Suite 207  
 Denver, CO 80204  
 (303) 928-7128  
 111 E. Third Street  
 Rifle, CO 81650  
 (970) 625-4740