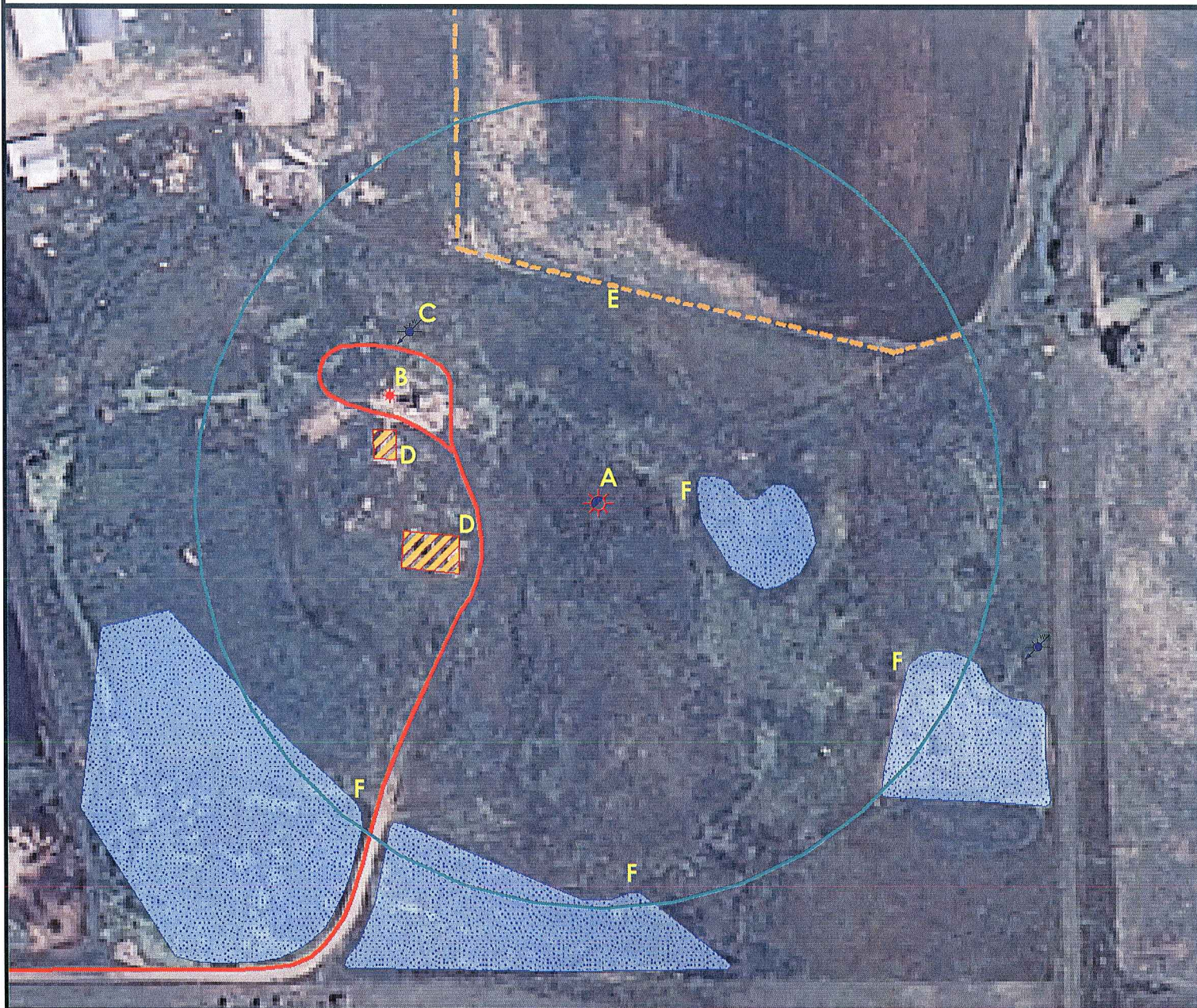


Location Drawing



A. Proposed well HALL 25-34.

E. Fence is 212' NE.

B. Existing well is 232' NW.

F. Marsh/Swamps are 100' W, 345' SE, 387' S, & 380' SW.

C. Water well (Permit #46885) is 250' NW.

D. Facilities are 143' SW & 208' W.



Legend

	Proposed Well		Building/Residence
	Existing Well		Oil & Gas Equipment
	Water Well		Water Body
	Pedestal		Utility Box
	CattleGuard/Gate		Railroad
	Bridge		Fence
	ECD		Overhead Power Line
	400' Radius		Pipeline
	Facilities Enclosure		Access Road
			Ditch/Canal
			Concrete Walled Ditch

400ft Radius Map

HALL 25-34

Surface Location: T6N R67W S25
Description of surface uses: Pasture Land

Field Date: 11/24/2009
Drawing Date: 11/25/2009
Drafter: BHF
Checked By: MPS
Revision: 1
Aerial Photo supplied by NAIP - 2009

Prepared for:
**ORR ENERGY
LLC**



Use our resources to find yours!
www.petro-fs.com

1801 W. 13th Ave Suite 207
Denver, CO 80204
(303) 928-7128
111 E. Third Street
Rifle, CO 81650
(970) 625-4740