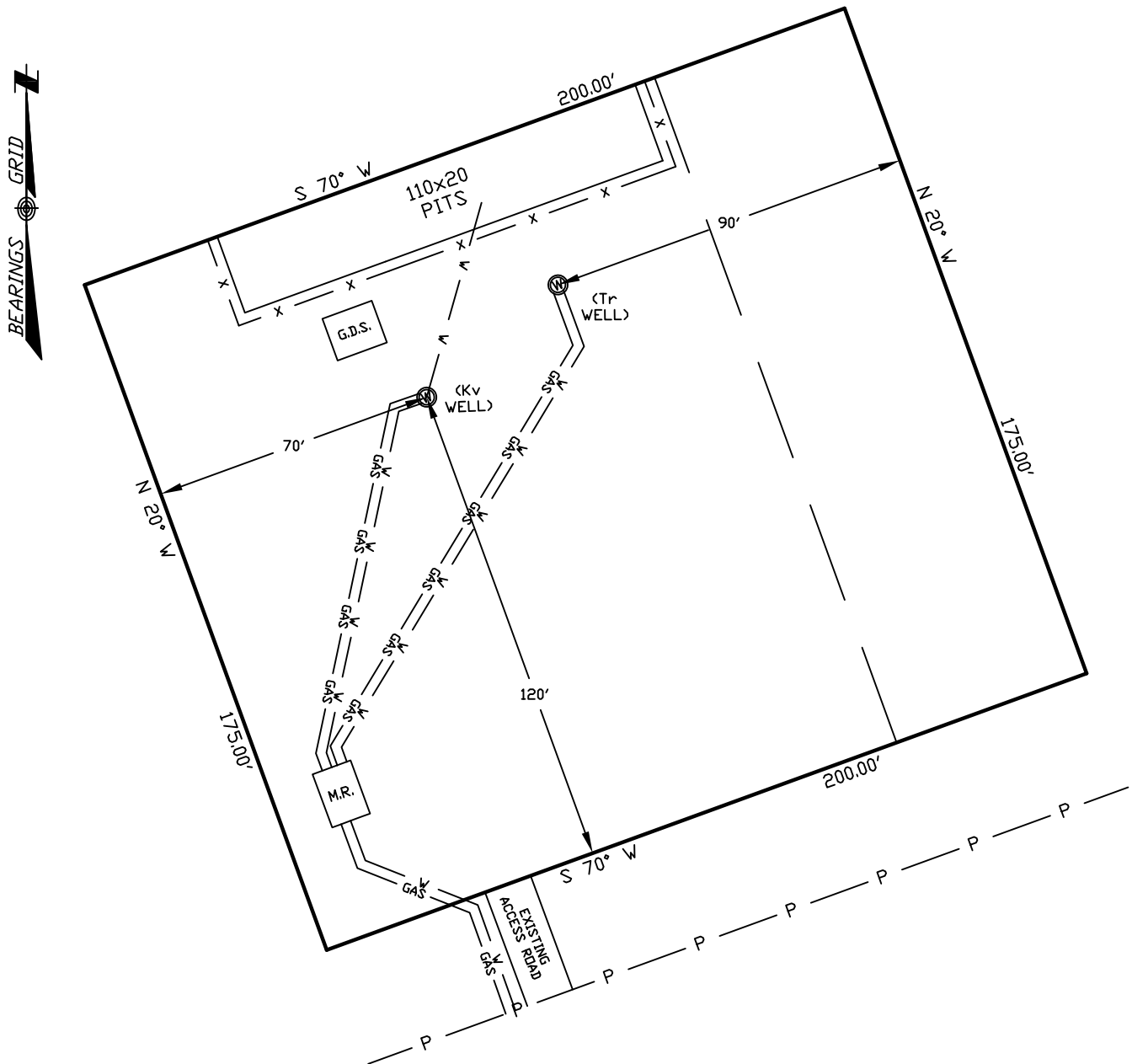


WELLSITE/PRODUCTION EQUIPMENT LAYOUT

OPERATOR: Pioneer Natural Resources

WELL NAME: Boof 12-2 TR

SWNW of SECTION 2 TOWNSHIP 33 S, RANGE 67 W OF THE 6TH P.M., IN LAS ANIMAS COUNTY



NOTE:

MUD AND BLOW PITS WILL BE CONVERTED TO LINED EVAPORATION PITS FOR PRODUCTION.

WELLHEADS ARE TYPICALLY PCP DRIVE HEADS

GRAPHIC SCALE



(IN FEET)

1 inch = 40 ft.

LEGEND:

- ⊙ = WELLHEAD
- x — = EXISTING WELLPAD
- x — = FENCE (4 STRAND)
- GAS — = 4" GAS GATHERING LINE
- W — = 2" WATER LINE
- M.R. = COMBO METER RUN AND WATER/GAS SEPARATOR
- G.D.S. = GAS DRIVE SYSTEM

October 29, 2008

Date Plotted

SHIELDS SURVEY L^{td}. C^o.
 Raton, New Mexico 87740
 (505)445-1232