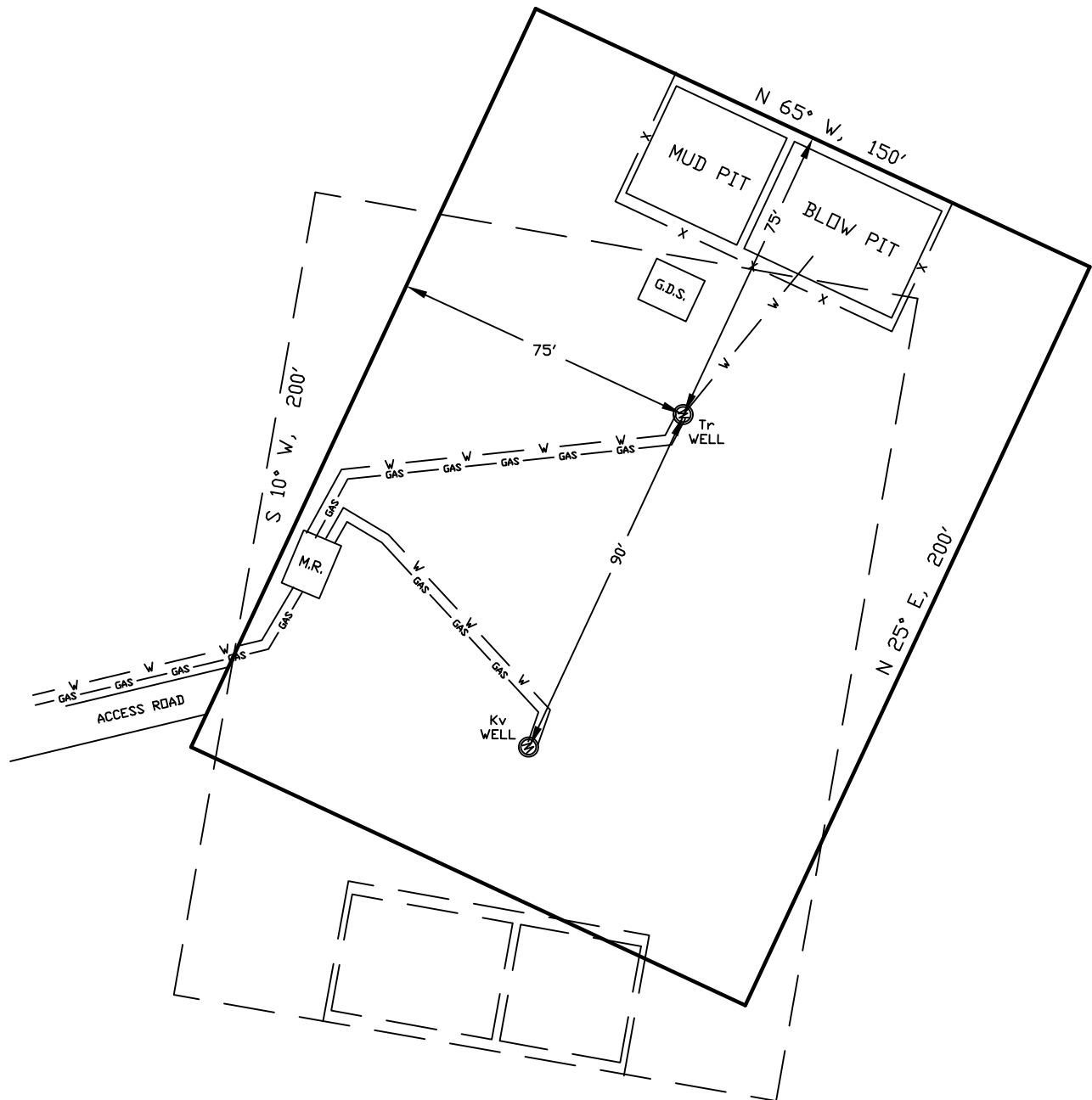


# WELLSITE/PRODUCTION EQUIPMENT LAYOUT

OPERATOR: Pioneer Natural Resources

WELL NAME: Centerfire 42-22 Tr

SENE of SECTION 22 TOWNSHIP 32 S, RANGE 66 W OF THE 6TH P.M., IN LAS ANIMAS COUNTY



## NOTE:

MUD AND BLOW PITS WILL BE CONVERTED TO UNLINED EVAPORATION PITS FOR PRODUCTION.

WELLHEADS ARE TYPICALLY PCP DRIVE HEADS

November 26, 2008

Date Platted


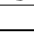
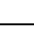
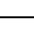

## GRAPHIC SCALE



( IN FEET )

1 inch = 40 ft.

## LEGEND:

-  = WELLHEAD
-  = EXISTING WELLPAD
-  = FENCE (4 STRAND)
-  = 4" GAS GATHERING LINE
-  = 2" WATER LINE
- M.R. = COMBO METER RUN AND WATER/GAS SEPERATOR
- G.D.S. = GAS DRIVE SYSTEM

SHIELDS SURVEY L<sup>td</sup>. C<sup>o</sup>.  
Raton, New Mexico 87740  
(505)445-1232