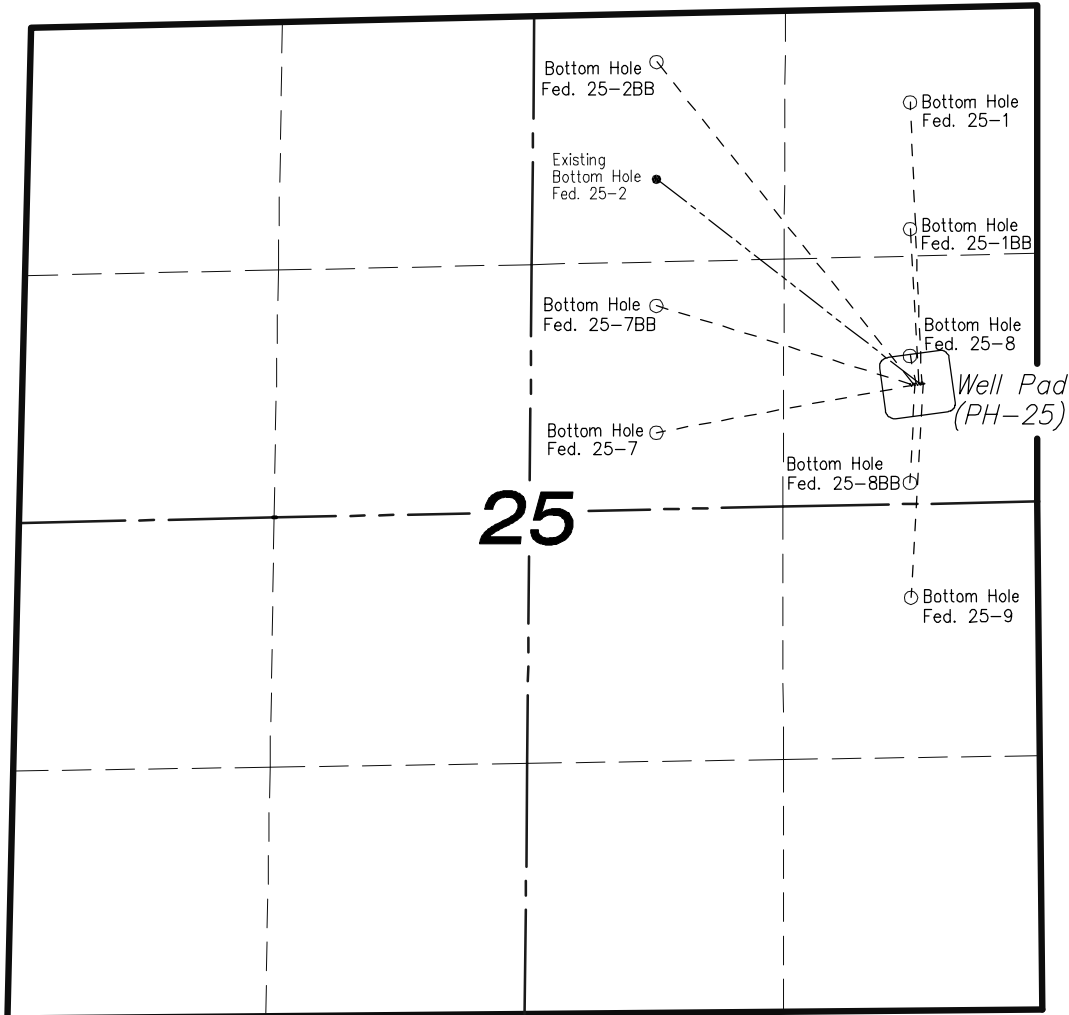
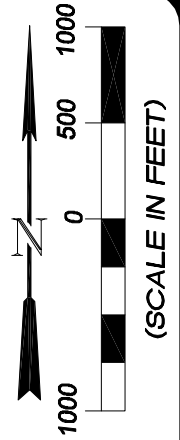


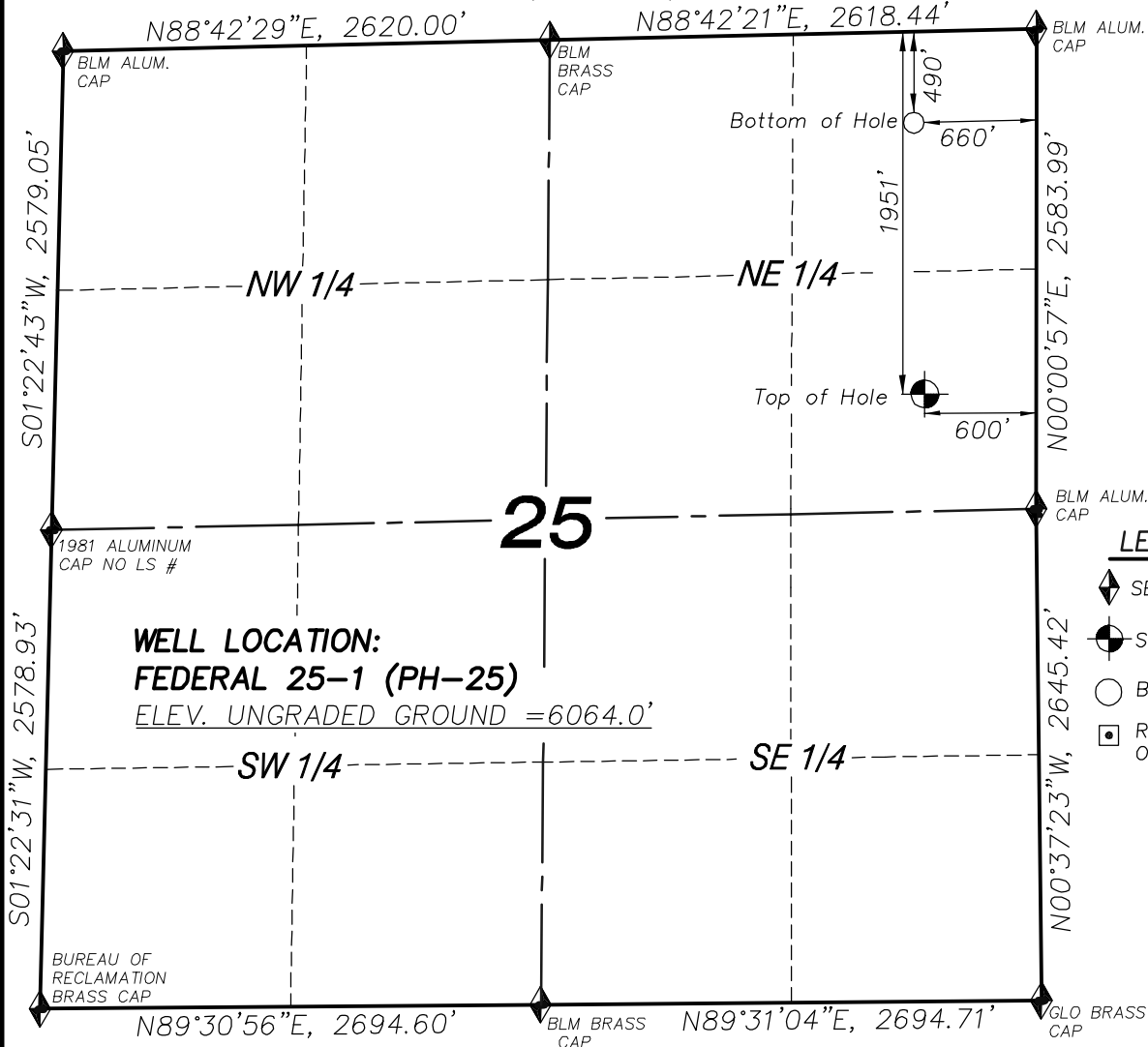
SECTION 25
T7S, R96W, 6th P.M.
EnCana Oil & Gas (USA) Inc.
Well Pad (PH-25)
SECTION DRILLING MAP



906 Main Street
 Evanston, Wyoming 82930
 Phone No. (307) 789-4545

		Scale: 1" = 1000'	SHEET 1 OF 10	
Project No.	09-04-04	Date Surveyed:		01/14/09
Date Drawn:	12/21/09	Latest Revision Date:		

T7S, R96W, 6th P.M.



WELL LOCATION:
FEDERAL 25-1 (PH-25)
 ELEV. UNGRADED GROUND = 6064.0'

LEGEND

- SECTION CORNER LOCATED
- SURFACE LOCATION
- BOTTOM HOLE LOCATION
- RECORD LOCATION OF CORNER

FEDERAL 25-1 WELL (PH-25)

(WELLHEAD LOCATION) NAD 83
 LATITUDE = 39.41046° N
 LONGITUDE = 108.05081° W
 (BOTTOM HOLE LOCATION) NAD 83
 LATITUDE = 39.41446° N
 LONGITUDE = 108.05104° W

CERTIFICATE OF SURVEYOR

I, TED TAGGART OF FRUITA, COLORADO HEREBY CERTIFY THAT THIS MAP WAS MADE FROM NOTES TAKEN DURING AN ACTUAL SURVEY MADE BY ME OR UNDER MY DIRECTION FOR ENCANA OIL & GAS (USA) INC. AND THAT THIS LOCATION HAS BEEN STAKED ON THE GROUND AS SHOWN HEREON.



906 Main Street
 Evanston, Wyoming 82930
 Phone No. (307) 789-4545

NOTES

1. WELL FOOTAGES ARE MEASURED AT RIGHT ANGLES TO SECTION LINES.
2. BASIS OF BEARING: GEODETIC- BASED ON GPS OBSERVATIONS.
3. ELEVATIONS BASED ON GPS OBSERVATIONS, NAVD 88 (GEOID 03), POST PROCESSED USING NGS OPUS.
4. THE BOTTOM HOLE BEARS N02°19'59"W, 1461' FROM TOP OF HOLE.
5. SEE ADDENDUM TO LEGAL PLAT (SHEET 1i) FOR VISIBLE IMPROVEMENTS WITHIN 400 FEET OF THE PROPOSED OIL & GAS LOCATION.
6. CONTROL FOR SURVEY WAS ESTABLISHED USING DIFFERENTIALLY CORRECTED GPS FROM AN OPUS BASED CONTROL NETWORK. WELL LOCATION WAS ESTABLISHED USING NON-GPS CONVENTIONAL METHODS, THEREFORE NO PDOP READING WAS TAKEN.

MAP to ACCOMPANY
APPLICATION for PERMIT to DRILL
EnCana Oil & Gas (USA) Inc.
Federal 25-1 (PH-25) Well
 SE1/4 NE1/4, SECTION 25
 T7S, R96W, 6th P.M.
 GARFIELD COUNTY, COLORADO

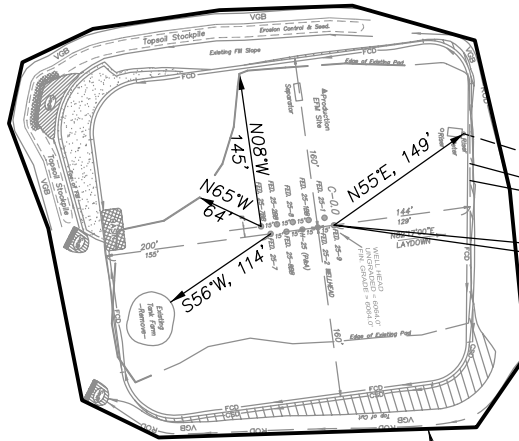
Location Plat		Scale: 1" = 1000'	SHEET 1d OF 10	
Project No.	09-04-04	Date Surveyed:		1/14/09
Date Drawn:	8/26/09	Latest Revision Date:		12/21/09

EnCana Oil & Gas (USA) Inc.
ADDENDUM TO LEGAL PLATS FOR
PH-25 Well Pad
SECTION 25, T 7 S, R 96 W, 6th P.M.

Surface use of the area is an existing well pad. Surrounding area of use is grazing. Vegetation consists mainly of sage brush, oak brush and native grasses.



400 FEET FROM PROPOSED DISTURBED AREA



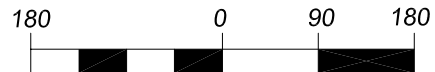
PROPOSED DISTURBED AREA

DISTANCE TO NEAREST PUBLIC ROAD IS ± 0.9 MILES.

DISTANCE TO NEAREST BUILDING IS ± 1 MILE.

DISTANCE TO NEAREST ABOVE GROUND UTILITY IS ± 0.35 MILES.

DISTANCE TO NEAREST RAILROAD IS ± 2 MILES.



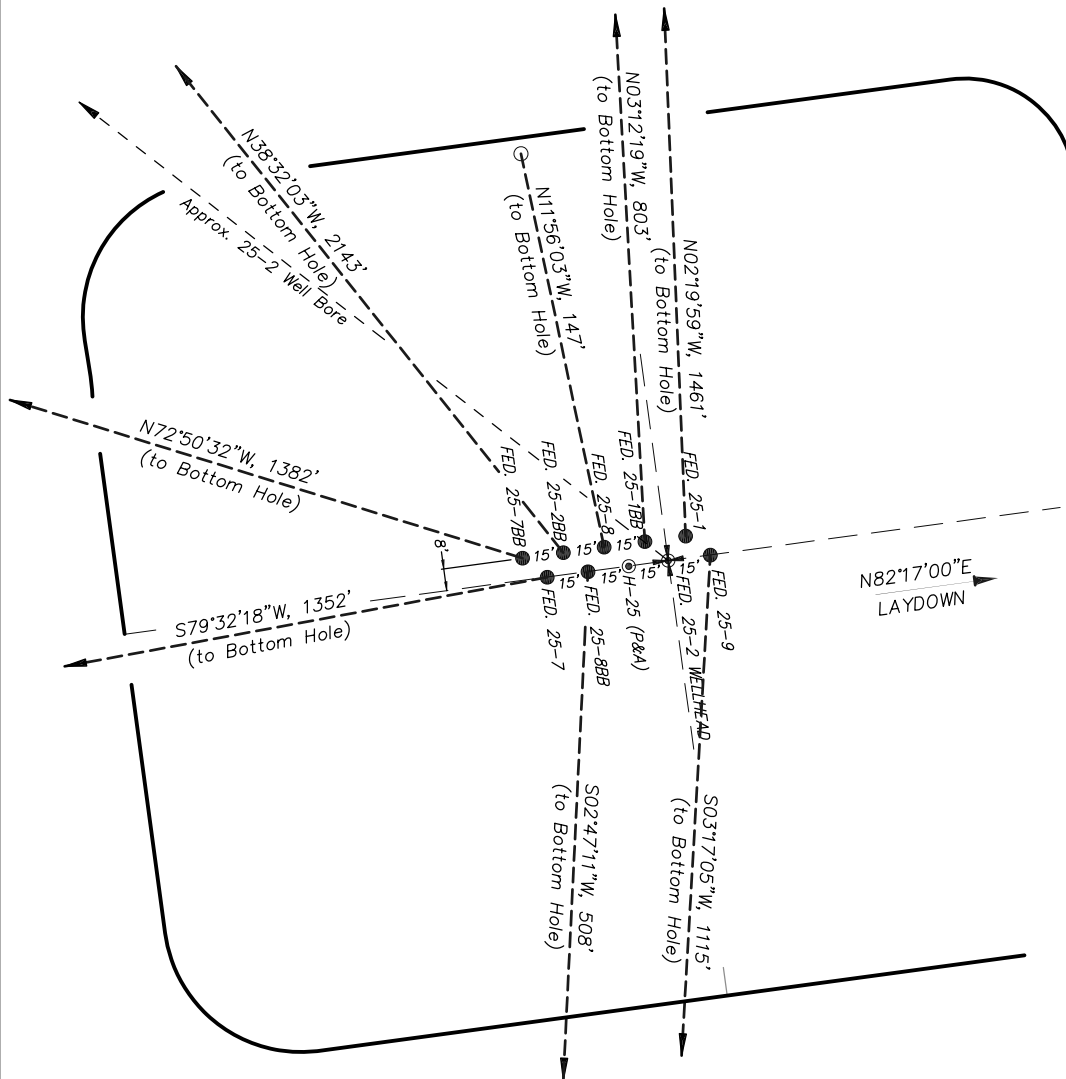
(SCALE IN FEET)



906 Main Street
 Evanston, Wyoming 82930
 Phone No. (307) 789-4545

<i>Addendum</i>		Scale: 1" = 180'	SHEET 1i OF 10
Project No.	09-04-04	Date Surveyed: 1/14/09	
Date Drawn:	8/26/09	Latest Revision Date: 12/21/09	

EnCana Oil & Gas (USA) Inc.
Well Pad PH-25
Section 25, T7S, R96W, 6th P.M.
WELL PAD INTERFERENCE PLAT



TOP HOLE FOOTAGES

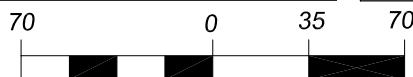
- FEDERAL 25-9 (PH-25)
1958' FNL & 591' FEL
- FEDERAL 25-8BB (PH-25)
1963' FNL & 636' FEL
- FEDERAL 25-7 (PH-25)
1965' FNL & 650' FEL
- FEDERAL 25-1 (PH-25)
1951' FNL & 600' FEL
- FEDERAL 25-1BB (PH-25)
1952' FNL & 615' FEL
- FEDERAL 25-8 (PH-25)
1954' FNL & 630' FEL
- FEDERAL 25-2BB (PH-25)
1956' FNL & 644' FEL
- FEDERAL 25-7BB (PH-25)
1957' FNL & 659' FEL

BOTTOM HOLE FOOTAGES

- FEDERAL 25-9 (PH-25)
2150' FSL & 660' FEL
- FEDERAL 25-8BB (PH-25)
2470' FNL & 660' FEL
- FEDERAL 25-7 (PH-25)
2180' FNL & 1980' FEL
- FEDERAL 25-1 (PH-25)
490' FNL & 660' FEL
- FEDERAL 25-1BB (PH-25)
1150' FNL & 660' FEL
- FEDERAL 25-8 (PH-25)
1810' FNL & 660' FEL
- FEDERAL 25-2BB (PH-25)
250' FNL & 1980' FEL
- FEDERAL 25-7BB (PH-25)
1520' FNL & 1980' FEL

RELATIVE COORDINATES From top hole to bottom hole		
WELL	NORTH	EAST
25-9	-1113	-64
25-8BB	-507	-25
25-7	-245	-1330
25-1	1460	-59
25-1BB	802	-45
25-8	144	-30
25-2BB	1676	-1335
25-7BB	408	-1320

LATITUDE & LONGITUDE Surface position of Wellheads (NAD 83)		
WELL	LATITUDE	LONGITUDE
25-9	39.41044°	108.05078°
25-8BB	39.41042°	108.05093°
25-7	39.41041°	108.05099°
25-1	39.41046°	108.05081°
25-1BB	39.41045°	108.05086°
25-8	39.41044°	108.05091°
25-2BB	39.41044°	108.05097°
25-7BB	39.41043°	108.05102°



(SCALE IN FEET)
 906 Main Street
 Evanston, Wyoming 82930
 Phone No. (307) 789-4545



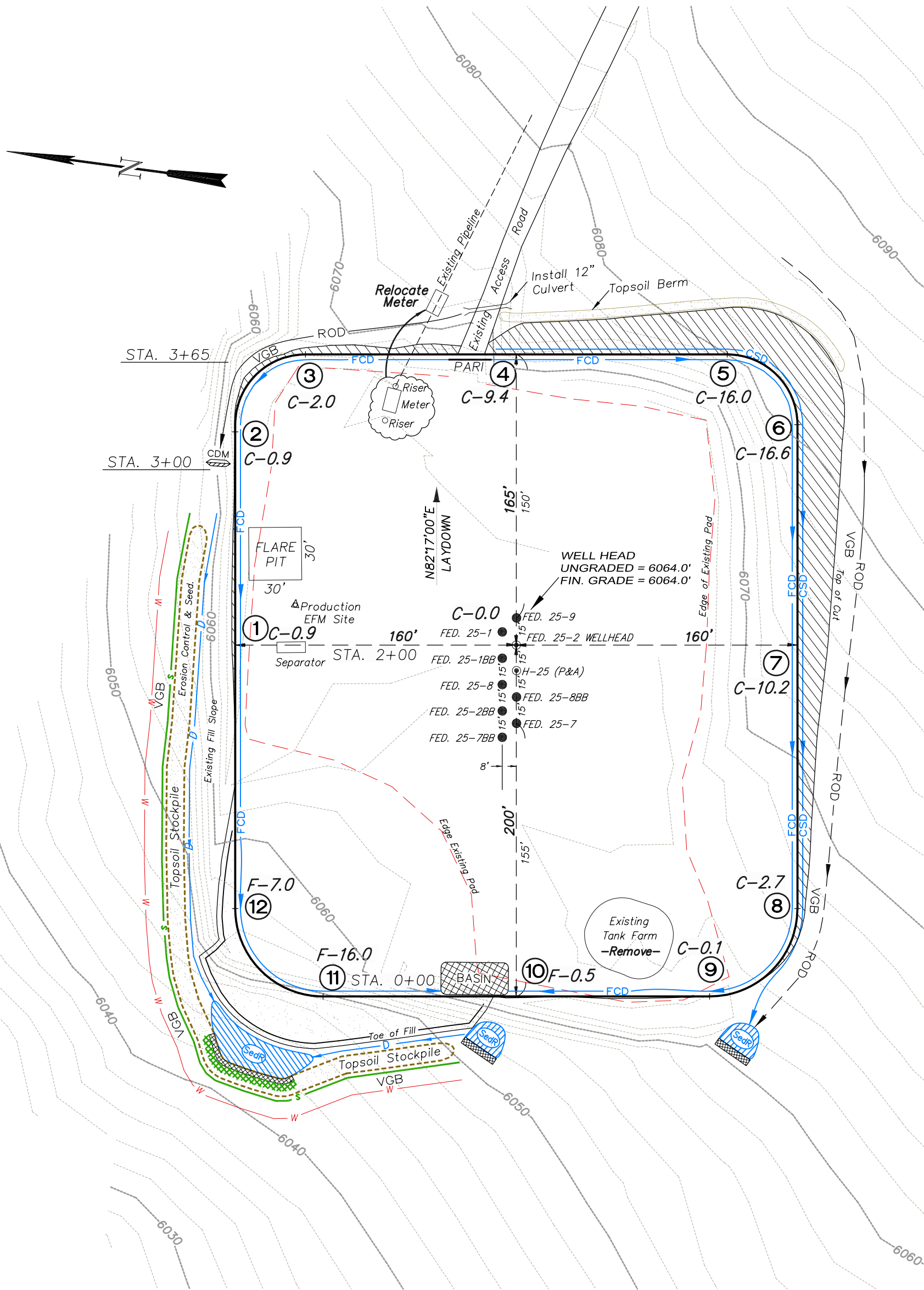
Interference Plat		Scale: 1" = 70'	SHEET 2 OF 10	
Project No.	09-04-04	Date Surveyed:		1/14/09
Date Drawn:	8/26/09	Latest Revision Date:		12/21/09

EnCana Oil & Gas (USA) Inc.

PH-25 Well Pad

SE1/4 NE1/4, SECTION 25, T 7 S, R 96 W, 6th P.M.

WELL PAD LAYOUT



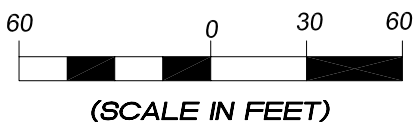
Total Surface Disturbance = 3.98 Acres
(See Sheet 4 for Details)

- NOTES:
- (1) Slope Track and/or Terrace all Slopes and Piles
 - (2) Erosion Control & Seed Topsoil
 - (3) Erosion Control & Seed Outside
 - (4) Slope away from Substructure Areas 1% to 3% to Flow Control

- LEGEND:
- SLASH
 - ST = SEDIMENT TRAP
 - SedR = SEDIMENT RESERVOIR
 - R.O.D. = RUN-ON DIVERSION
 - PERIMETER CONTROL (WATTLES)
 - CSD = CUT SLOPE DIVERSION (BERM TOE OF CUT SLOPE)
 - D = FILL DIVERSION TO SEDIMENT TRAP
 - VGB = VEGETATION BUFFER (UNDISTURBED LAND INSIDE PC)
 - FCD = FLOW CONTROL DITCH
 - PARI = PAD/ACCESS ROAD INTERFACE
 - LEVEL SPREADER
 - TOE BERM (PLACED AT TOE OF ALL FILL SLOPES/STOCKPILES)
 - TOPSOIL BERM
 - SEED, ECB & FLEX
 - SEED



906 Main Street
Evanston, Wyoming 82930
Phone No. (307) 789-4545



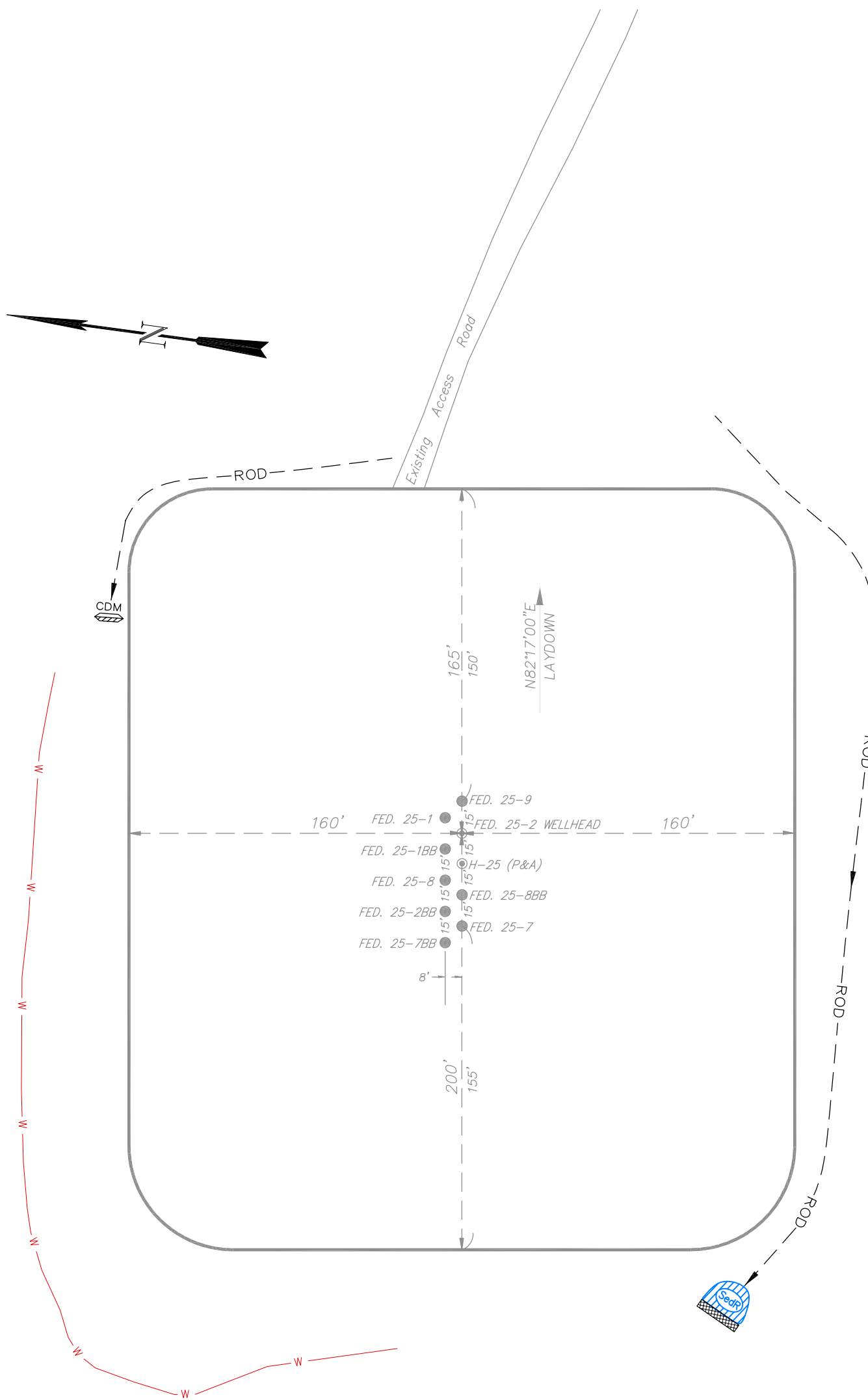
Well Pad Layout		Scale: 1" = 60'	SHEET
Project No.	09-04-04	Date Surveyed:	1/14/09
Date Drawn:	8/14/09	Latest Revision Date:	12/16/09
			3
			OF 10

EnCana Oil & Gas (USA) Inc.

PH-25 Well Pad

SE1/4 NE1/4, SECTION 25, T 7 S, R 96 W, 6th P.M.

PRE-CONSTRUCTION PLAT



Total Surface Disturbance = 3.98 Acres
(See Sheet 4 for Details)

- NOTES;
- (1) Slope Track and/or Terrace all Slopes and Piles
 - (2) Erosion Control & Seed Topsoil
 - (3) Erosion Control & Seed Outside
 - (4) Slope away from Substructure Areas 1% to 3% to Flow Control

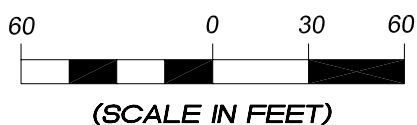
- LEGEND
- S- = SLASH
 - ST = SEDIMENT TRAP
 - SedR = SEDIMENT RESERVOIR
 - R.O.D. = RUN-ON DIVERSION
 - W- = PERIMETER CONTROL (WATTLES)
 - CSD = CUT SLOPE DIVERSION (BERM TOE OF CUT SLOPE)
 - D = FILL DIVERSION TO SEDIMENT TRAP
 - VGB = VEGETATION BUFFER (UNDISTURBED LAND INSIDE PC)
 - FCD = FLOW CONTROL DITCH
 - PARI = PAD/ACCESS ROAD INTERFACE
 - [Cross-hatched] = LEVEL SPREADER
 - - - = TOE BERM (PLACED AT TOE OF ALL FILL SLOPES/STOCKPILES)
 - - - = TOPSOIL BERM
 - [Green with dots] = SEED, ECB & FLEX
 - [Pink with dots] = SEED

PRE-CONSTRUCTION PHASE COMPLETE,
AUTHORIZATION TO CONTINUE
CONSTRUCTION.

SIGNATURE: _____



906 Main Street
Evanston, Wyoming 82930
Phone No. (307) 789-4545

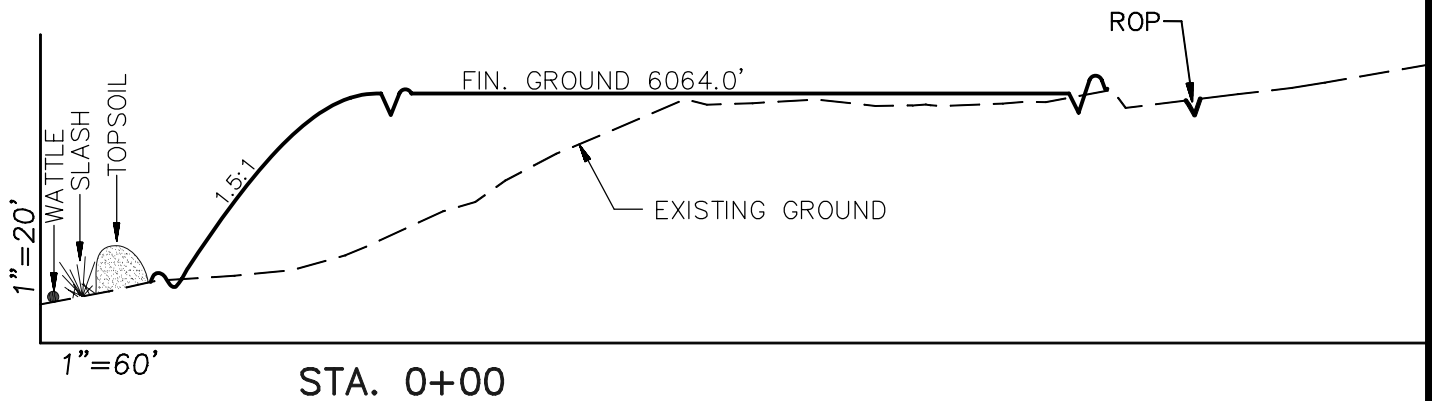
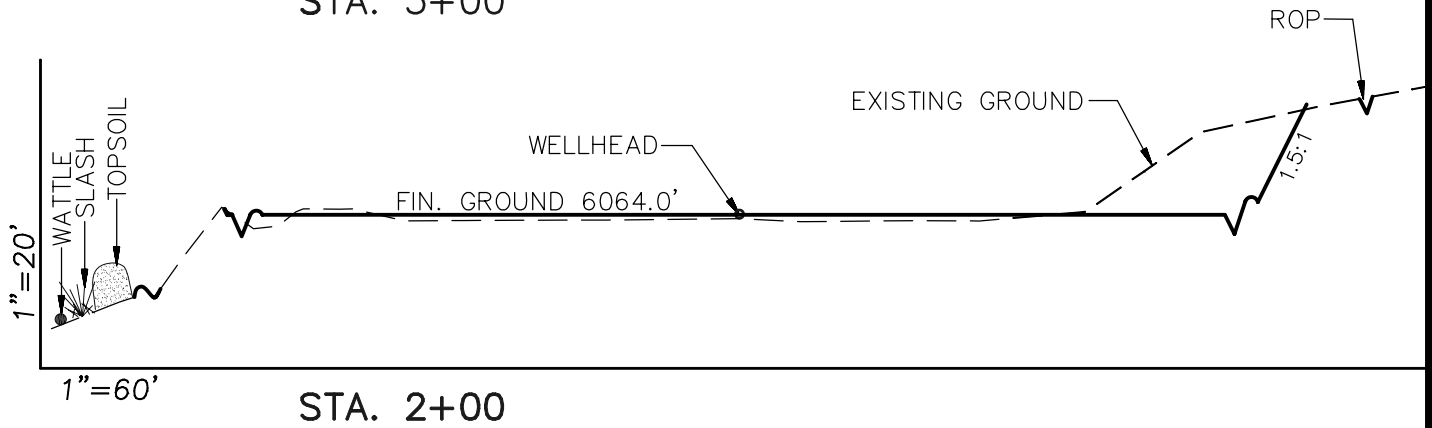
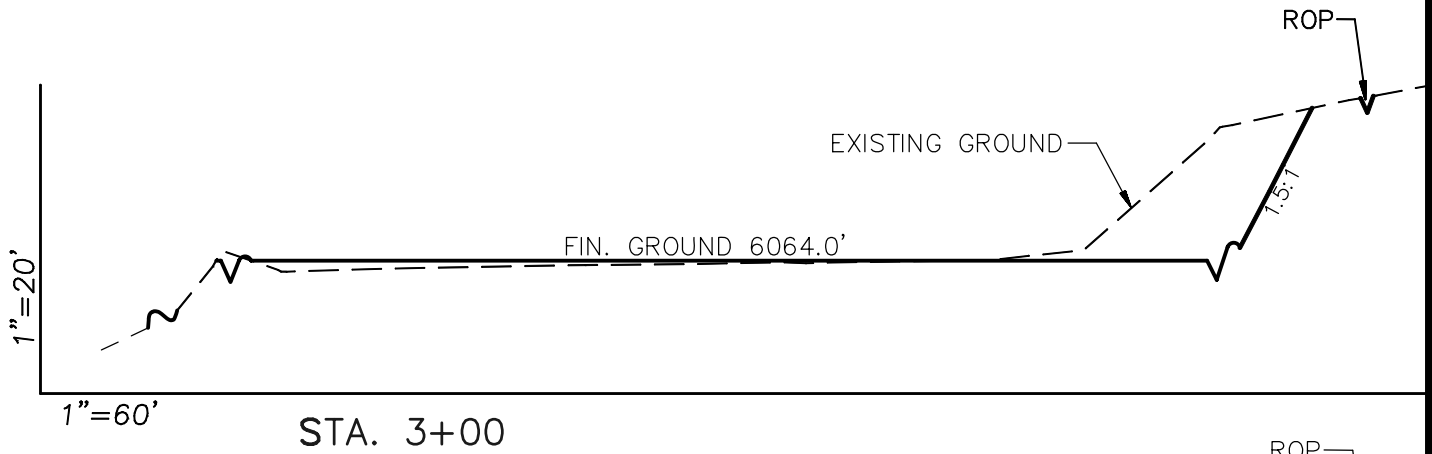


Pre-Construction		Scale: 1" = 60'	SHEET 3a OF 10
Project No.	09-04-04	Date Surveyed: 1/14/09	
Date Drawn:	8/14/09	Latest Revision Date: 12/16/09	

EnCana Oil & Gas (USA) Inc.

Well Pad PH-25

CROSS SECTIONS



SURFACE DISTURBANCE (IN ACRES)

Well Pad	2.6
Side Slopes	0.4
Topsoil & Waste Material	0.98
TOTAL	3.98

NOTE:
ALL CUT AND FILL
SLOPES ARE AT 1.5:1
UNLESS OTHERWISE
NOTED.

EARTHWORK QUANTITIES

(in Cubic Yards w/ 0% shrink/swell)

ITEM	CUT	FILL	6" TOPSOIL	EXCESS
PAD	5435	4712	Topsoil not included in Excavation	723
PIT	0	0		0
TOTALS	5435	4712	1366	723

Cross Sections

Scale: As Shown

SHEET

Project No. 09-04-04

Date Surveyed: 1/14/09

4

Date Drawn: 8/26/09

Latest Revision Date: 12/16/09

OF 10

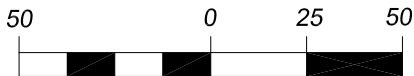
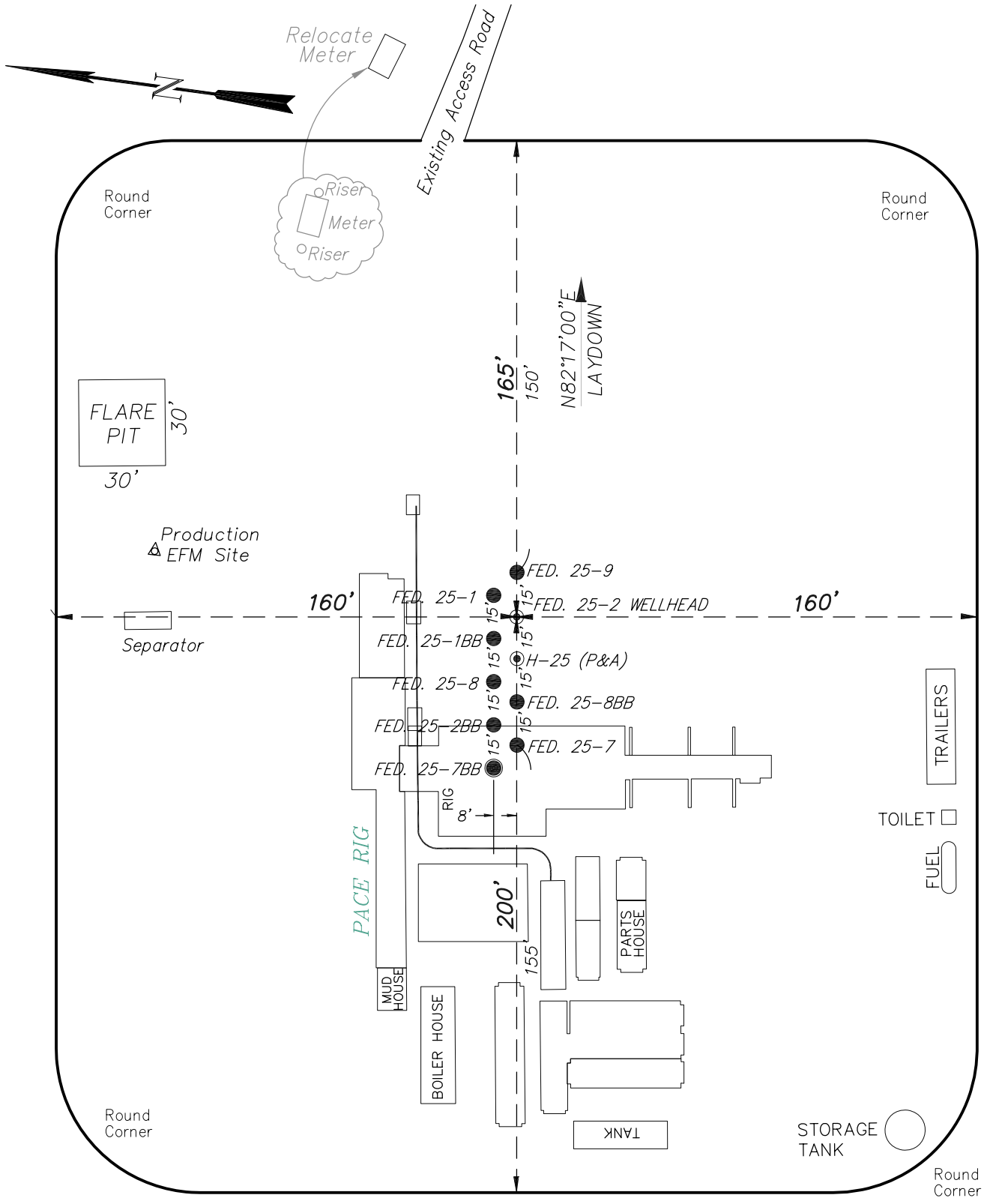


906 Main Street
Evanston, Wyoming 82930
Phone No. (307) 789-4545

EnCana Oil & Gas (USA) Inc.

Well Pad PH-25

TYPICAL RIG LAYOUT



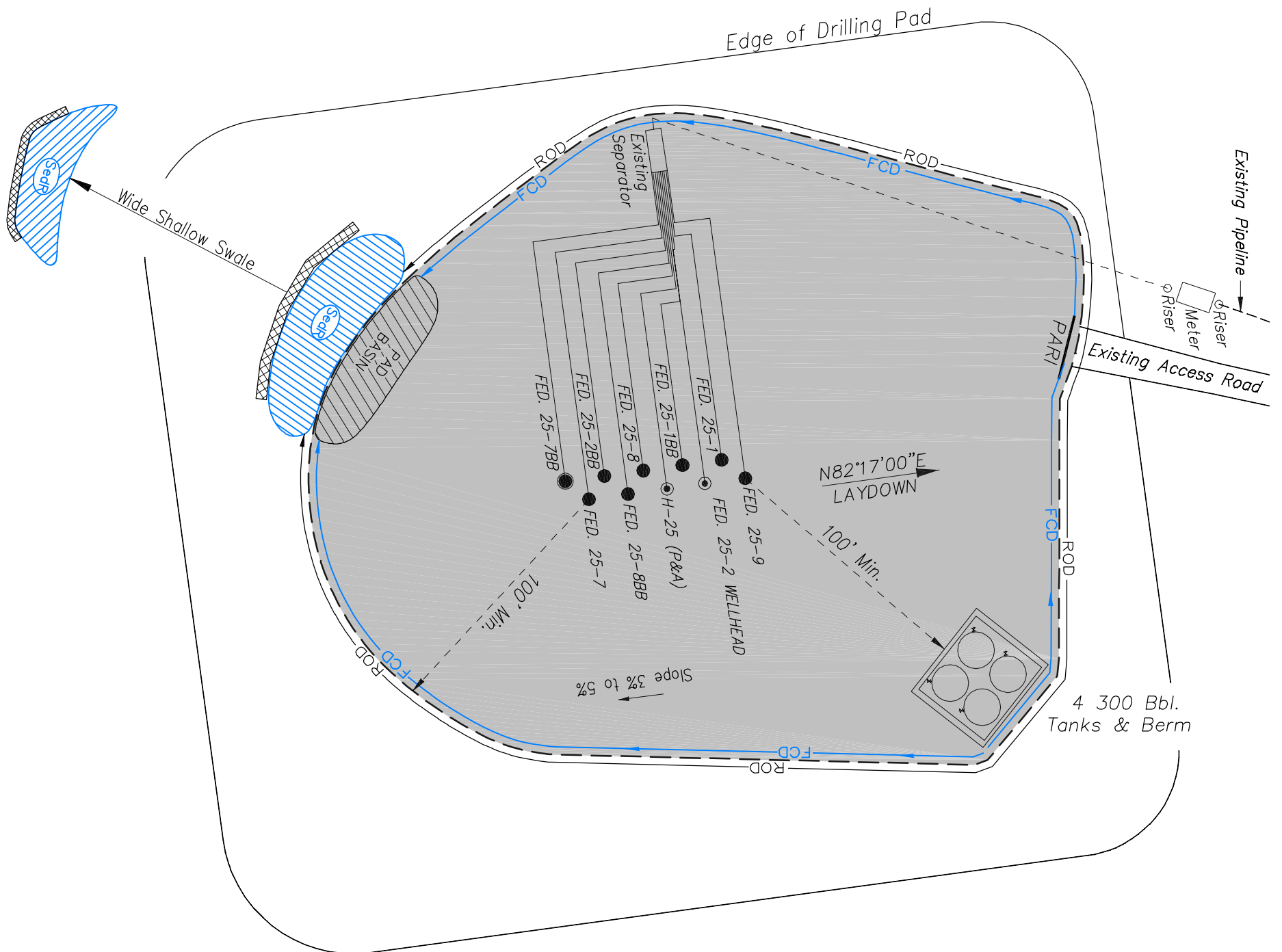
(SCALE IN FEET)



906 Main Street
Evanston, Wyoming 82930
Phone No. (307) 789-4545

Rig Layout		Scale: 1" = 50'	SHEET 5 OF 10	
Project No.	09-04-04	Date Surveyed:		1/14/09
Date Drawn:	8/14/09	Latest Revision Date:		12/16/09

EnCana Oil & Gas (USA) Inc.
PH-25 Well Pad
PRODUCTION SCHEMATIC



NOTES:

1. Set Tanks High so pad Entrance & Tank Area Can Drain to Pad Basin
2. Gravel Pad 75' from Wells & Around Tanks and Separators
3. Pad Drains to Pad Basin at a 3% to 5% slope
4. BMP Selection and Position may change Depending on Actual Conditions Encountered During the Construction Process

NOTE:

Actual Equipment Layout and Reclaimed Pad Surface Area May Change due to Production Requirements or Site Conditions.

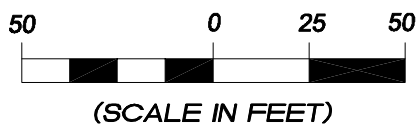
ESTIMATED AREAS
 RECLAIMED AREA: 2.61 ACRES
 UNRECLAIMED AREA: 1.37 ACRES

LEGEND

- SLASH
- SEDIMENT TRAP
- SedR = SEDIMENT RESERVOIR
- R.O.D. = RUN-ON DIVERSION
- PERIMETER CONTROL (WATTLES)
- CSD = CUT SLOPE DIVERSION (BERM TOE OF CUT SLOPE)
- D = FILL DIVERSION TO SEDIMENT TRAP
- VGB = VEGETATION BUFFER (UNDISTURBED LAND INSIDE PC)
- FCD = FLOW CONTROL DITCH
- PARI = PAD/ACCESS ROAD INTERFACE
- LEVEL SPREADER
- TOE BERM (PLACED AT TOE OF ALL FILL SLOPES/STOCKPILES)
- TOPSOIL BERM
- SEED, ECB & FLEX
- SEED



906 Main Street
 Evanston, Wyoming 82930
 Phone No. (307) 789-4545



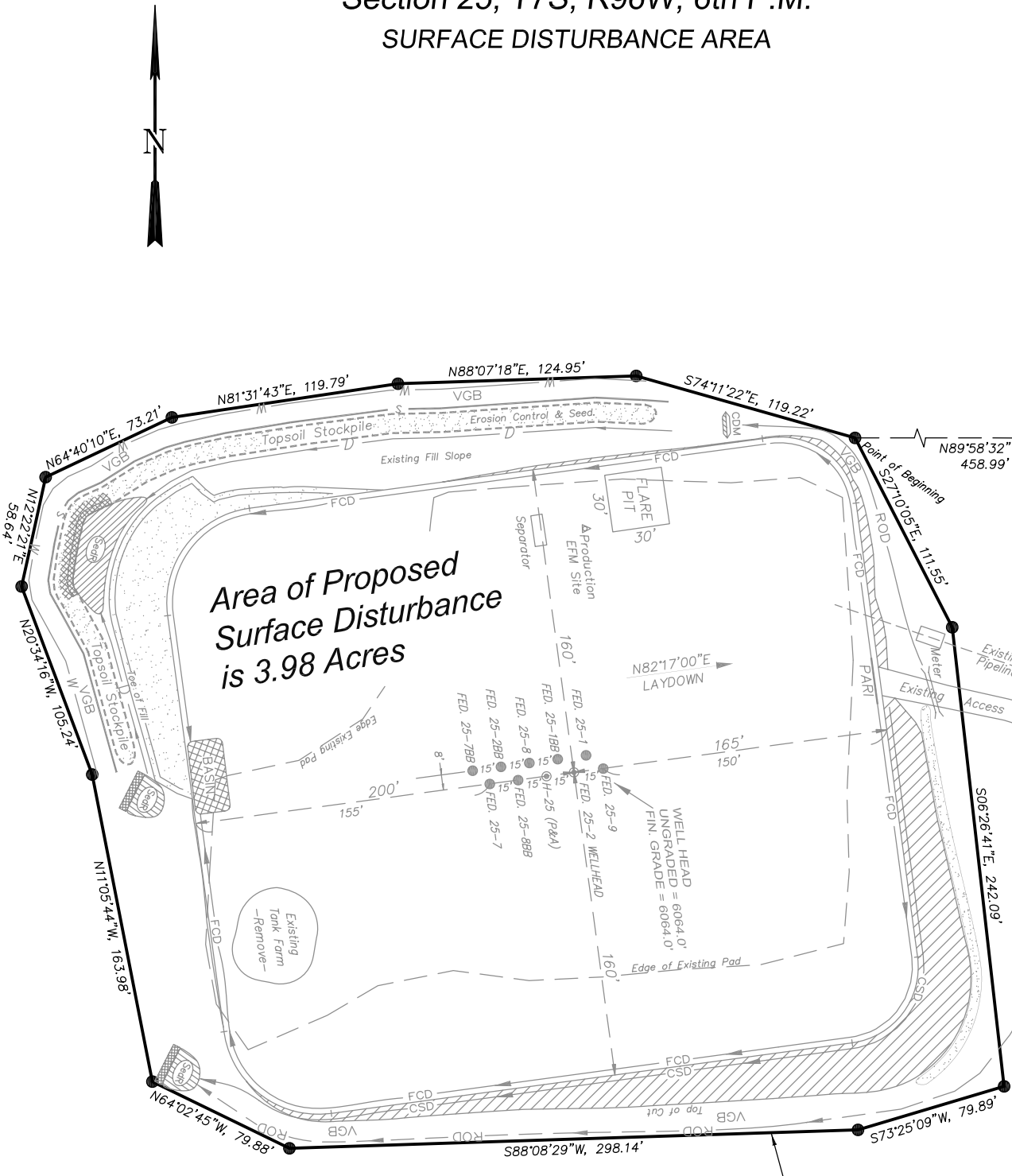
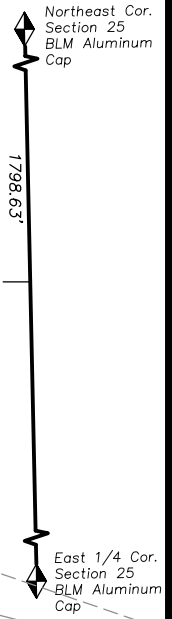
Production Schematic		Scale: 1" = 50'	SHEET
Project No.	09-04-04	Date Surveyed:	1/14/09
Date Drawn:	8/26/09	Latest Revision Date:	12/16/09
			6
			OF 10

EnCana Oil & Gas (USA) Inc.

Well Pad PH-25

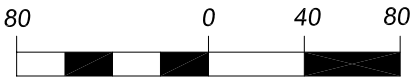
Section 25, T7S, R96W, 6th P.M.

SURFACE DISTURBANCE AREA



Area of Proposed Surface Disturbance is 3.98 Acres

DISTURBED AREA LIMITS



(SCALE IN FEET)



906 Main Street
Evanston, Wyoming 82930
Phone No. (307) 789-4545

<i>Surface Disturbance</i>		Scale: 1" = 80'	SHEET 7 OF 10
Project No.	09-04-04	Date Surveyed: 1/14/09	
Date Drawn:	8/14/09	Latest Revision Date: 12/16/09	