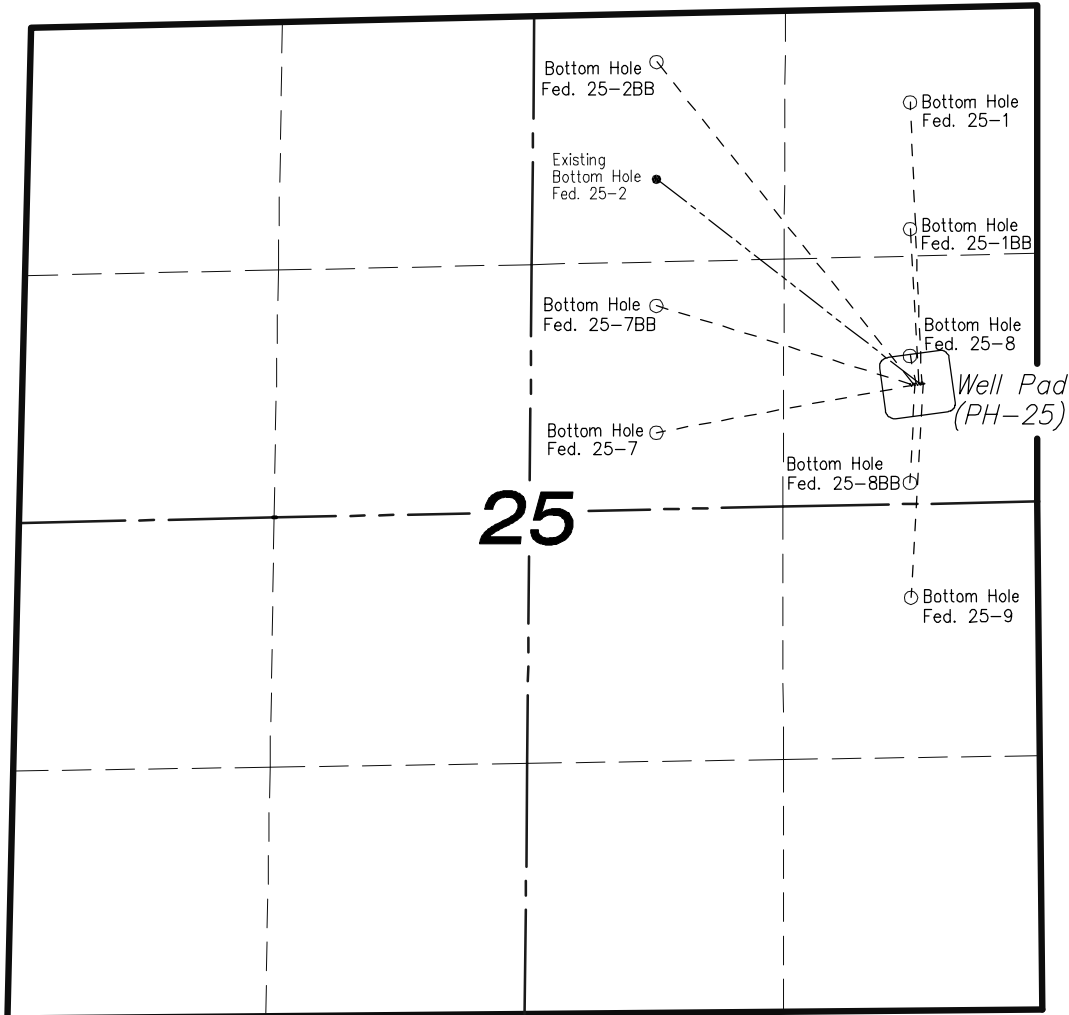
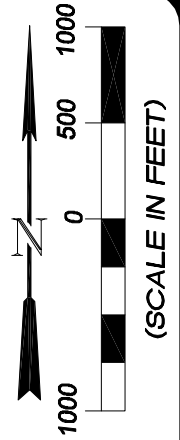


**SECTION 25**  
**T7S, R96W, 6th P.M.**  
**EnCana Oil & Gas (USA) Inc.**  
**Well Pad (PH-25)**  
**SECTION DRILLING MAP**



906 Main Street  
 Evanston, Wyoming 82930  
 Phone No. (307) 789-4545

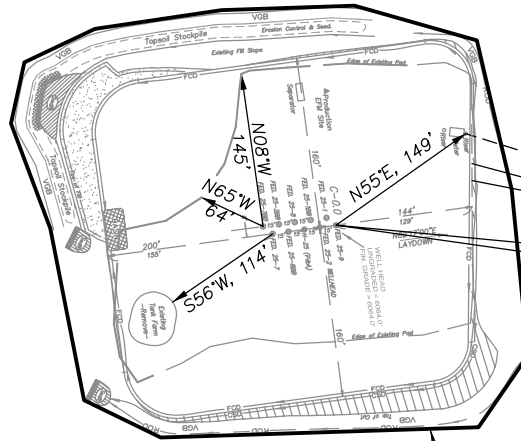
		<b>Scale: 1" = 1000'</b>	<b>SHEET</b> <b>1</b> <b>OF 10</b>	
<b>Project No.</b>	<b>09-04-04</b>	<b>Date Surveyed:</b>		<b>01/14/09</b>
<b>Date Drawn:</b>	<b>12/21/09</b>	<b>Latest Revision Date:</b>		

**EnCana Oil & Gas (USA) Inc.**  
**ADDENDUM TO LEGAL PLATS FOR**  
**PH-25 Well Pad**  
**SECTION 25, T 7 S, R 96 W, 6th P.M.**

Surface use of the area is an existing well pad. Surrounding area of use is grazing. Vegetation consists mainly of sage brush, oak brush and native grasses.

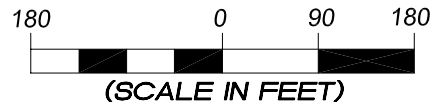


400 FEET FROM PROPOSED DISTURBED AREA



PROPOSED DISTURBED AREA

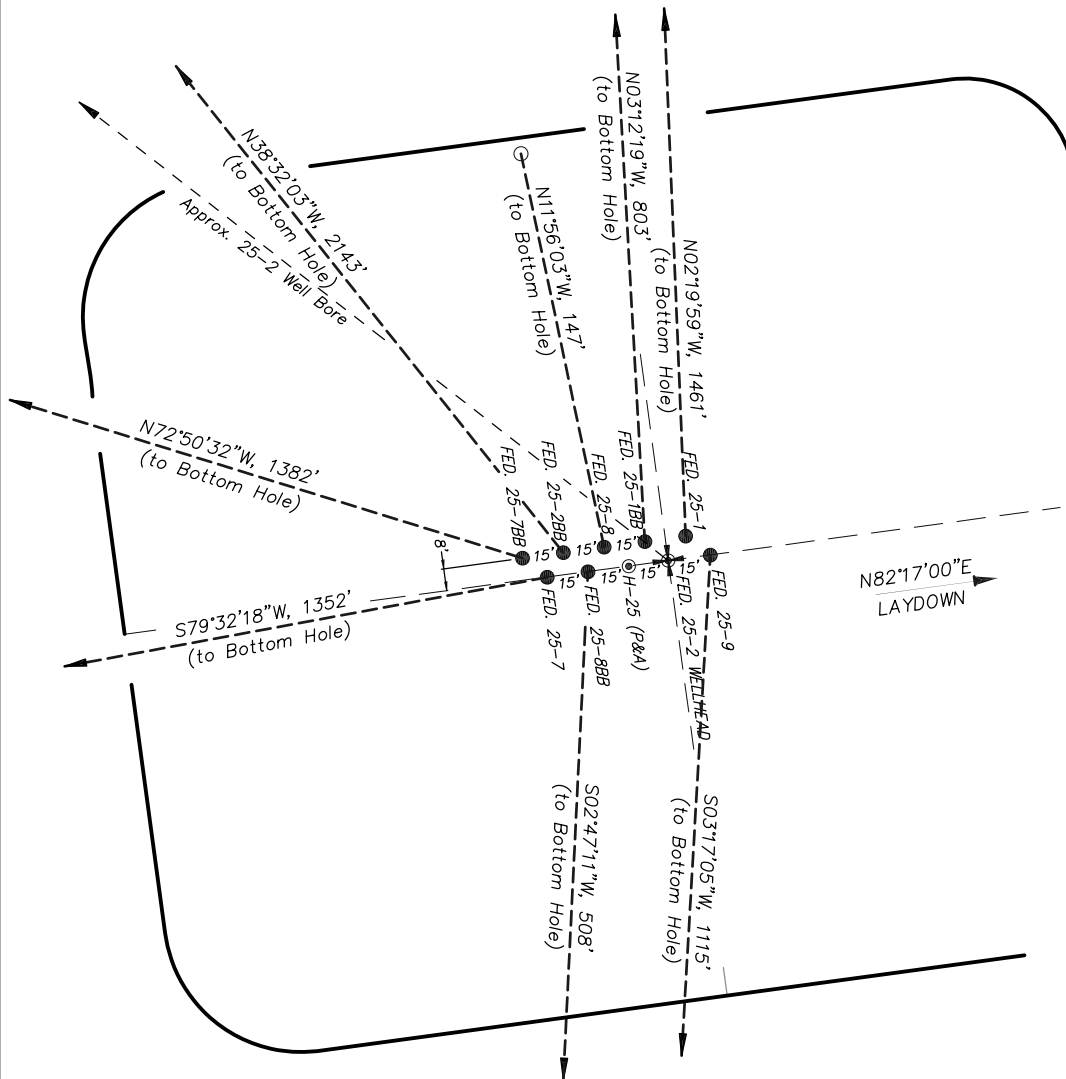
DISTANCE TO NEAREST PUBLIC ROAD IS ± 0.9 MILES.  
 DISTANCE TO NEAREST BUILDING IS ± 1 MILE.  
 DISTANCE TO NEAREST ABOVE GROUND UTILITY IS ± 0.35 MILES.  
 DISTANCE TO NEAREST RAILROAD IS ± 2 MILES.



906 Main Street  
 Evanston, Wyoming 82930  
 Phone No. (307) 789-4545

<i>Addendum</i>		Scale: 1" = 180'	SHEET <b>1i</b> OF 10
Project No.	09-04-04	Date Surveyed: 1/14/09	
Date Drawn:	8/26/09	Latest Revision Date: 12/21/09	

**EnCana Oil & Gas (USA) Inc.**  
**Well Pad PH-25**  
**Section 25, T7S, R96W, 6th P.M.**  
**WELL PAD INTERFERENCE PLAT**

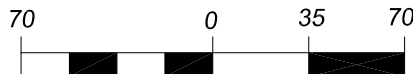


- TOP HOLE FOOTAGES**
- FEDERAL 25-9 (PH-25)  
1958' FNL & 591' FEL
  - FEDERAL 25-8BB (PH-25)  
1963' FNL & 636' FEL
  - FEDERAL 25-7 (PH-25)  
1965' FNL & 650' FEL
  - FEDERAL 25-1 (PH-25)  
1951' FNL & 600' FEL
  - FEDERAL 25-1BB (PH-25)  
1952' FNL & 615' FEL
  - FEDERAL 25-8 (PH-25)  
1954' FNL & 630' FEL
  - FEDERAL 25-2BB (PH-25)  
1956' FNL & 644' FEL
  - FEDERAL 25-7BB (PH-25)  
1957' FNL & 659' FEL

- BOTTOM HOLE FOOTAGES**
- FEDERAL 25-9 (PH-25)  
2150' FSL & 660' FEL
  - FEDERAL 25-8BB (PH-25)  
2470' FNL & 660' FEL
  - FEDERAL 25-7 (PH-25)  
2180' FNL & 1980' FEL
  - FEDERAL 25-1 (PH-25)  
490' FNL & 660' FEL
  - FEDERAL 25-1BB (PH-25)  
1150' FNL & 660' FEL
  - FEDERAL 25-8 (PH-25)  
1810' FNL & 660' FEL
  - FEDERAL 25-2BB (PH-25)  
250' FNL & 1980' FEL
  - FEDERAL 25-7BB (PH-25)  
1520' FNL & 1980' FEL

RELATIVE COORDINATES From top hole to bottom hole		
WELL	NORTH	EAST
25-9	-1113	-64
25-8BB	-507	-25
25-7	-245	-1330
25-1	1460	-59
25-1BB	802	-45
25-8	144	-30
25-2BB	1676	-1335
25-7BB	408	-1320

LATITUDE & LONGITUDE Surface position of Wellheads (NAD 83)		
WELL	LATITUDE	LONGITUDE
25-9	39.41044°	108.05078°
25-8BB	39.41042°	108.05093°
25-7	39.41041°	108.05099°
25-1	39.41046°	108.05081°
25-1BB	39.41045°	108.05086°
25-8	39.41044°	108.05091°
25-2BB	39.41044°	108.05097°
25-7BB	39.41043°	108.05102°



**(SCALE IN FEET)**  
 906 Main Street  
 Evanston, Wyoming 82930  
 Phone No. (307) 789-4545



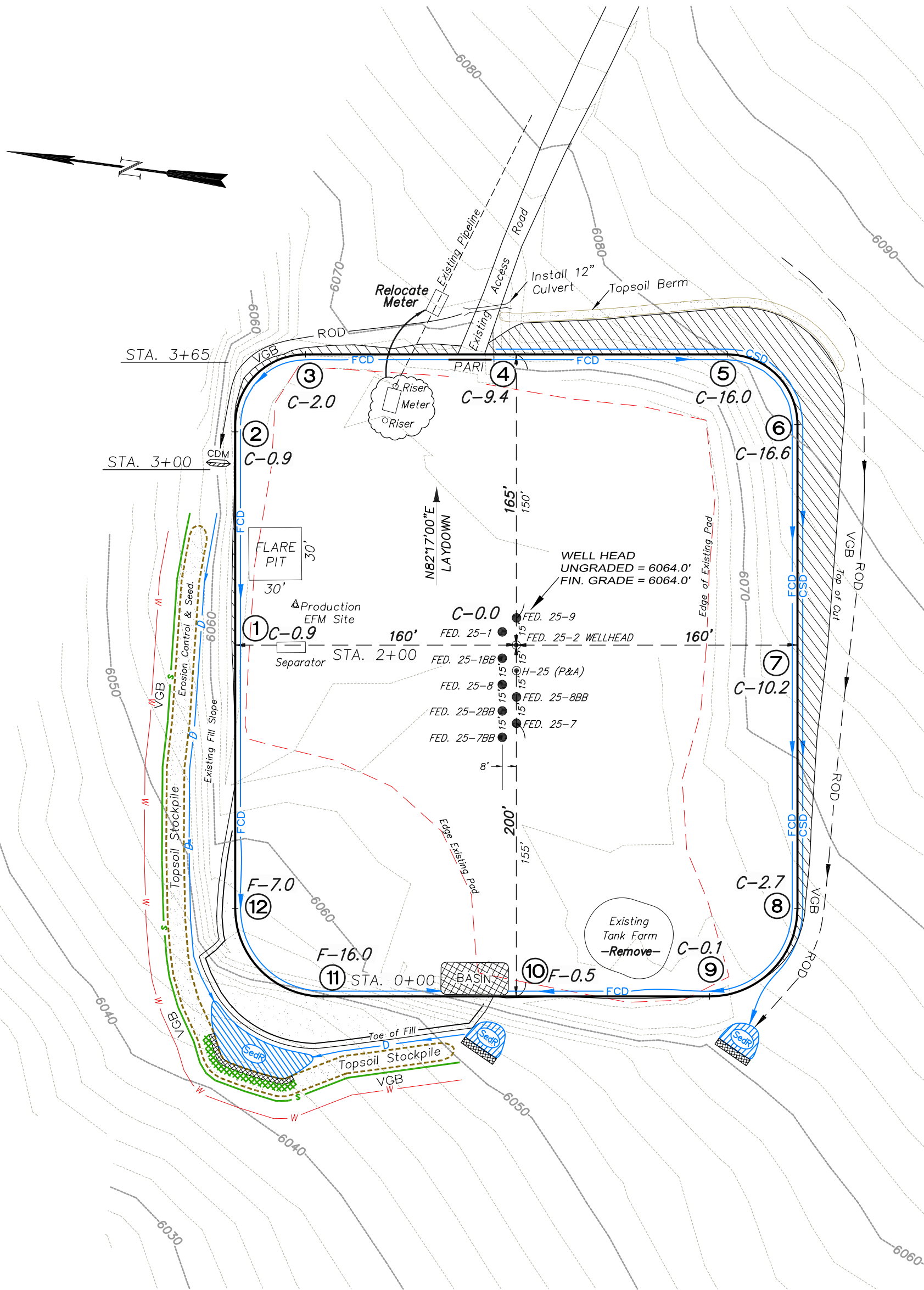
<b>Interference Plat</b>		<b>Scale: 1" = 70'</b>	<b>SHEET</b> <b>2</b> <b>OF 10</b>	
Project No.	09-04-04	Date Surveyed:		1/14/09
Date Drawn:	8/26/09	Latest Revision Date:		12/21/09

# EnCana Oil & Gas (USA) Inc.

## PH-25 Well Pad

SE1/4 NE1/4, SECTION 25, T 7 S, R 96 W, 6th P.M.

### WELL PAD LAYOUT



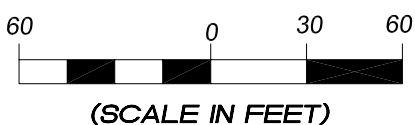
Total Surface Disturbance = 3.98 Acres  
(See Sheet 4 for Details)

- NOTES:
- (1) Slope Track and/or Terrace all Slopes and Piles
  - (2) Erosion Control & Seed Topsoil
  - (3) Erosion Control & Seed Outside
  - (4) Slope away from Substructure Areas 1% to 3% to Flow Control

- LEGEND:
- SLASH
  - ST = SEDIMENT TRAP
  - SedR = SEDIMENT RESERVOIR
  - R.O.D. = RUN-ON DIVERSION
  - W = PERIMETER CONTROL (WATTLES)
  - CSD = CUT SLOPE DIVERSION (BERM TOE OF CUT SLOPE)
  - D = FILL DIVERSION TO SEDIMENT TRAP
  - VGB = VEGETATION BUFFER (UNDISTURBED LAND INSIDE PC)
  - FCD = FLOW CONTROL DITCH
  - PARI = PAD/ACCESS ROAD INTERFACE
  - = LEVEL SPREADER
  - = TOE BERM (PLACED AT TOE OF ALL FILL SLOPES/STOCKPILES)
  - = TOPSOIL BERM
  - = SEED, ECB & FLEX
  - = SEED



906 Main Street  
Evanston, Wyoming 82930  
Phone No. (307) 789-4545



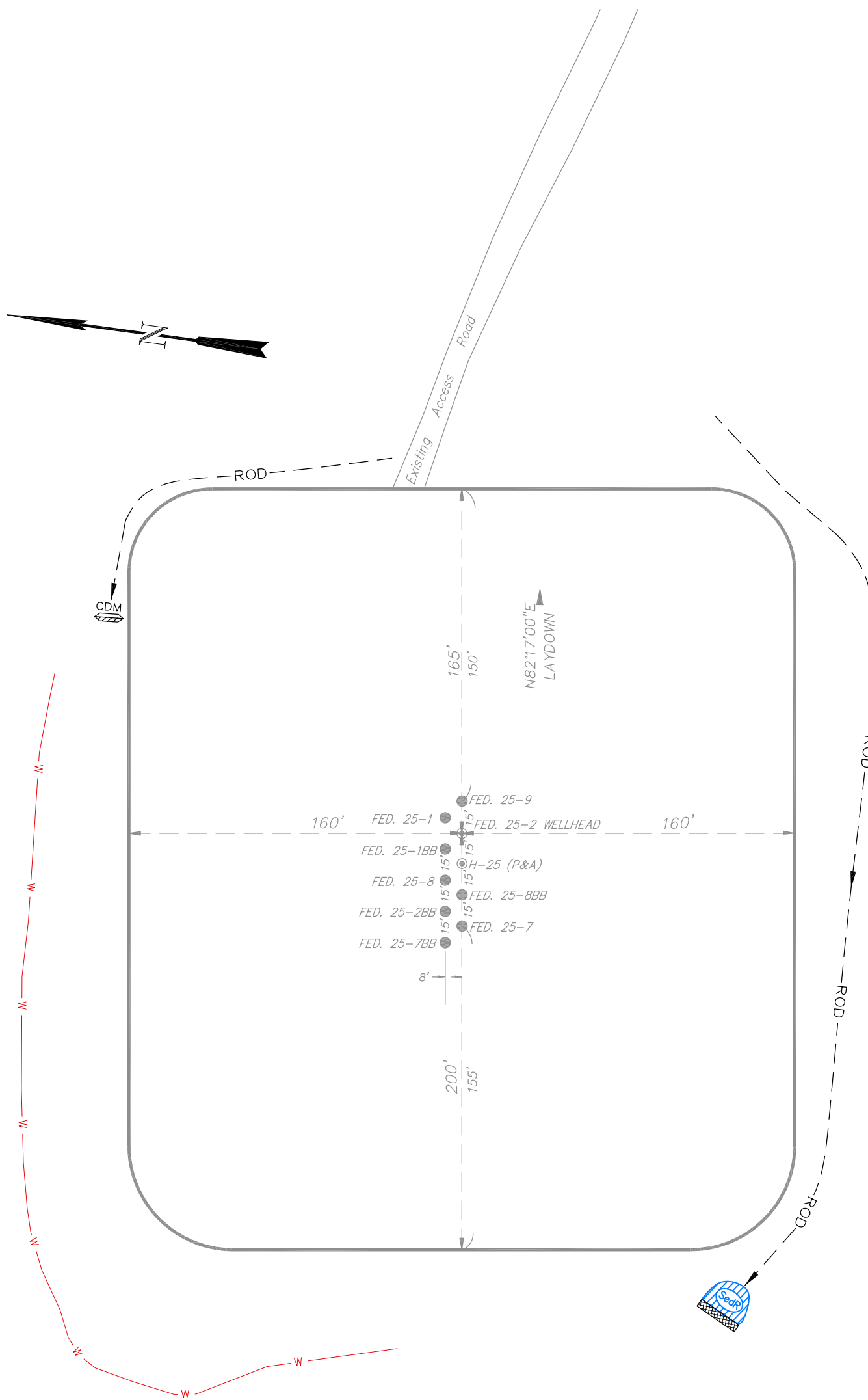
Well Pad Layout		Scale: 1" = 60'	SHEET
Project No.	09-04-04	Date Surveyed:	1/14/09
Date Drawn:	8/14/09	Latest Revision Date:	12/16/09
			3
			OF 10

# EnCana Oil & Gas (USA) Inc.

## PH-25 Well Pad

SE1/4 NE1/4, SECTION 25, T 7 S, R 96 W, 6th P.M.

PRE-CONSTRUCTION PLAT



Total Surface Disturbance = 3.98 Acres  
(See Sheet 4 for Details)

- NOTES;
- (1) Slope Track and/or Terrace all Slopes and Piles
  - (2) Erosion Control & Seed Topsoil
  - (3) Erosion Control & Seed Outside
  - (4) Slope away from Substructure Areas 1% to 3% to Flow Control

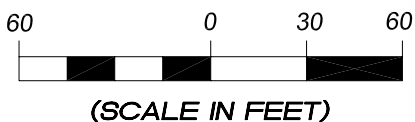
- LEGEND
- S- = SLASH
  - ST = SEDIMENT TRAP
  - SedR = SEDIMENT RESERVOIR
  - R.O.D. = RUN-ON DIVERSION
  - W- = PERIMETER CONTROL (WATTLES)
  - CSD = CUT SLOPE DIVERSION (BERM TOE OF CUT SLOPE)
  - D = FILL DIVERSION TO SEDIMENT TRAP
  - VGB = VEGETATION BUFFER (UNDISTURBED LAND INSIDE PC)
  - FCD = FLOW CONTROL DITCH
  - PARI = PAD/ACCESS ROAD INTERFACE
  - [Cross-hatch] = LEVEL SPREADER
  - - - = TOE BERM (PLACED AT TOE OF ALL FILL SLOPES/STOCKPILES)
  - - - = TOPSOIL BERM
  - [Green box] = SEED, ECB & FLEX
  - [Pink box] = SEED

PRE-CONSTRUCTION PHASE COMPLETE,  
AUTHORIZATION TO CONTINUE  
CONSTRUCTION.

SIGNATURE: \_\_\_\_\_



906 Main Street  
Evanston, Wyoming 82930  
Phone No. (307) 789-4545

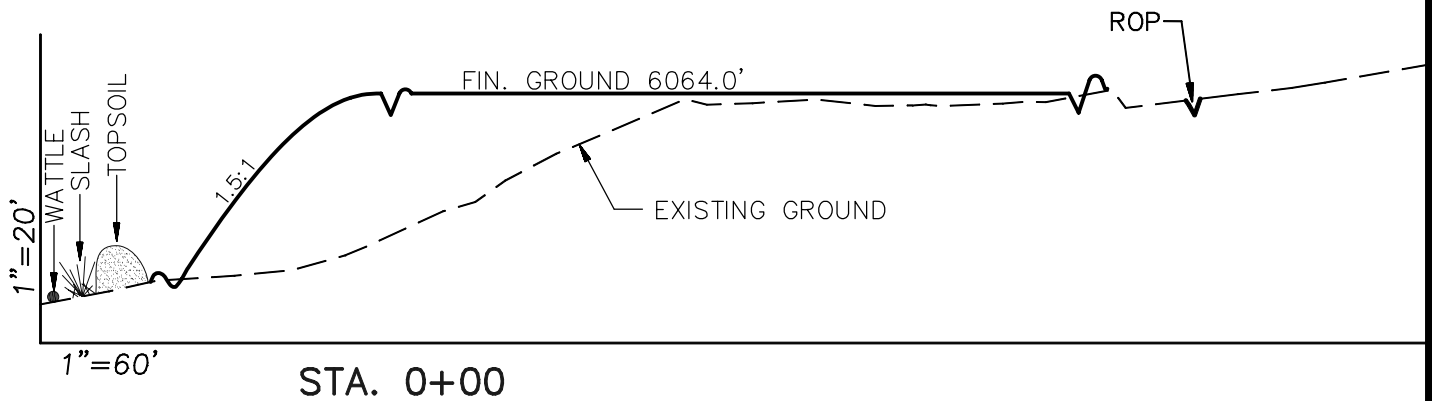
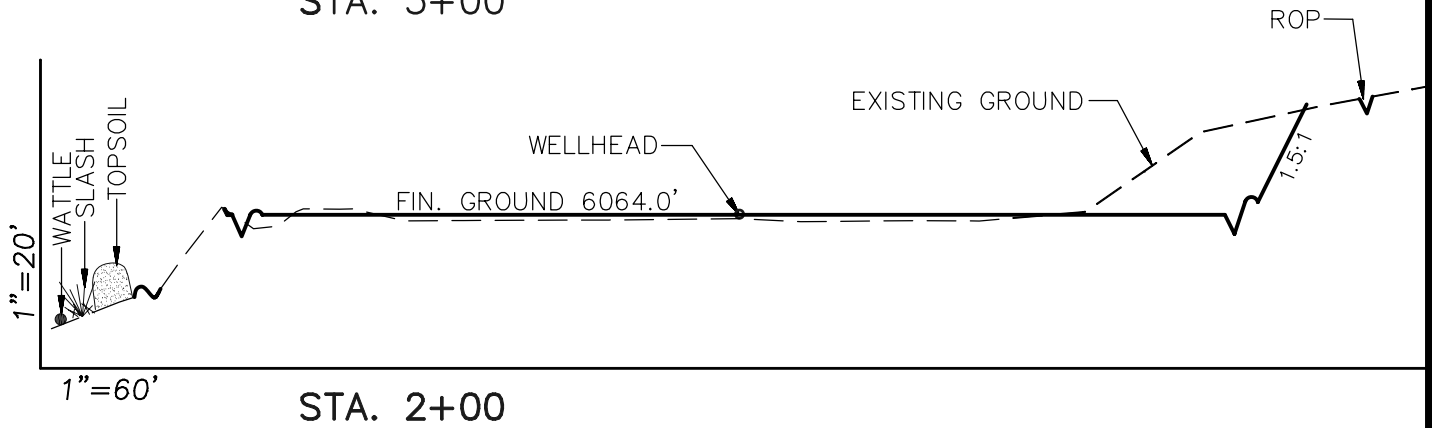
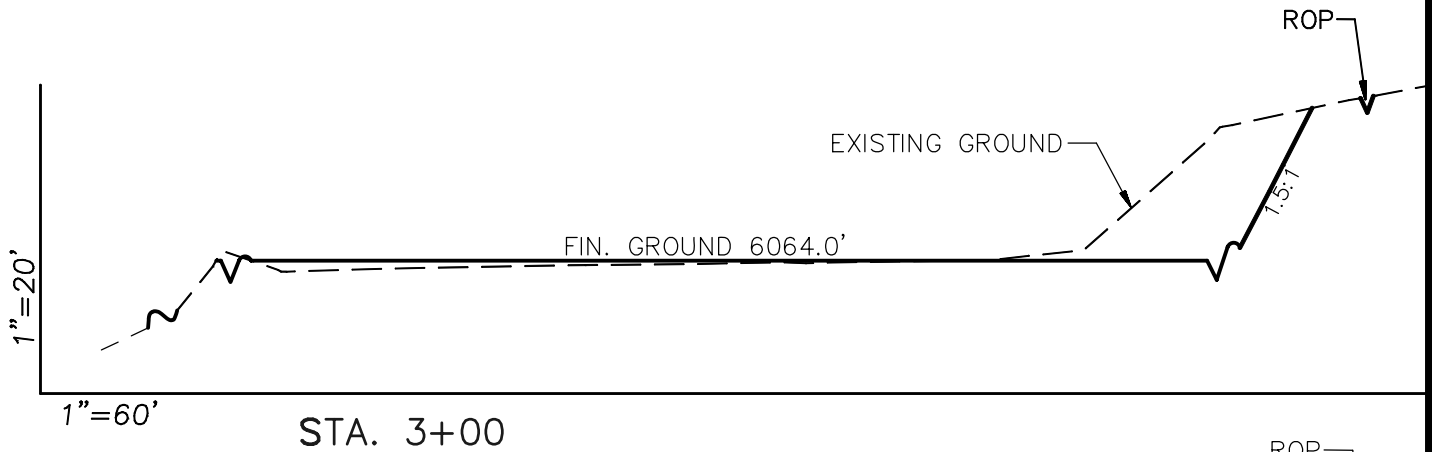


<b>Pre-Construction</b>		<b>Scale: 1" = 60'</b>	<b>SHEET</b> <b>3a</b> <b>OF 10</b>	
Project No.	09-04-04	Date Surveyed:		1/14/09
Date Drawn:	8/14/09	Latest Revision Date:		12/16/09

# EnCana Oil & Gas (USA) Inc.

## Well Pad PH-25

### CROSS SECTIONS



#### SURFACE DISTURBANCE (IN ACRES)

Well Pad	2.6
Side Slopes	0.4
Topsoil & Waste Material	0.98
<b>TOTAL</b>	<b>3.98</b>

**NOTE:**  
ALL CUT AND FILL  
SLOPES ARE AT 1.5:1  
UNLESS OTHERWISE  
NOTED.

#### EARTHWORK QUANTITIES

(in Cubic Yards w/ 0% shrink/swell)

ITEM	CUT	FILL	6" TOPSOIL	EXCESS
PAD	5435	4712	Topsoil not included in Excavation	723
PIT	0	0		0
<b>TOTALS</b>	<b>5435</b>	<b>4712</b>	<b>1366</b>	<b>723</b>

#### Cross Sections

Scale: As Shown

SHEET

Project No. 09-04-04

Date Surveyed: 1/14/09

4

Date Drawn: 8/26/09

Latest Revision Date: 12/16/09

OF 10

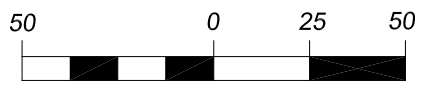
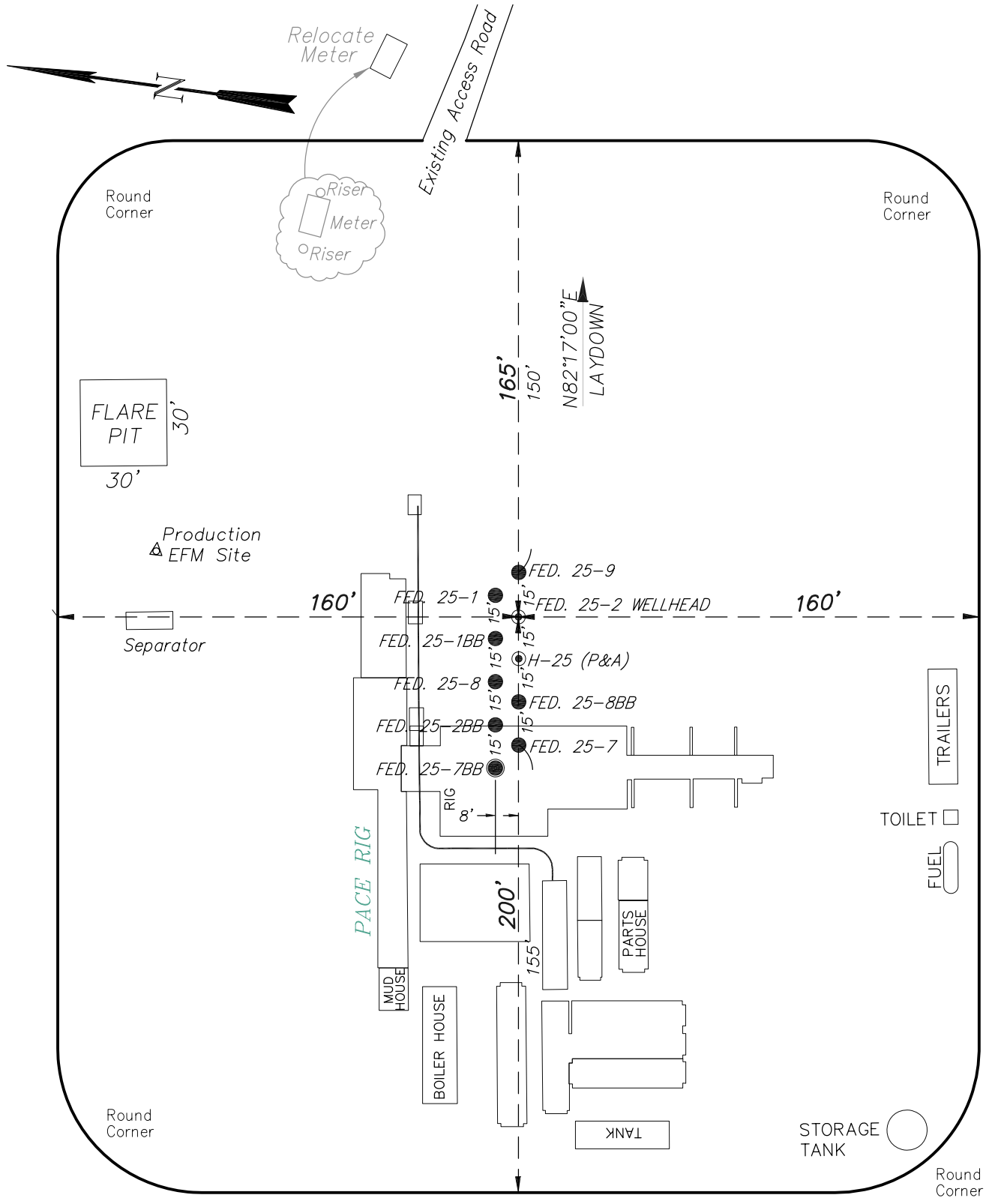


906 Main Street  
Evanston, Wyoming 82930  
Phone No. (307) 789-4545

# EnCana Oil & Gas (USA) Inc.

## Well Pad PH-25

### TYPICAL RIG LAYOUT



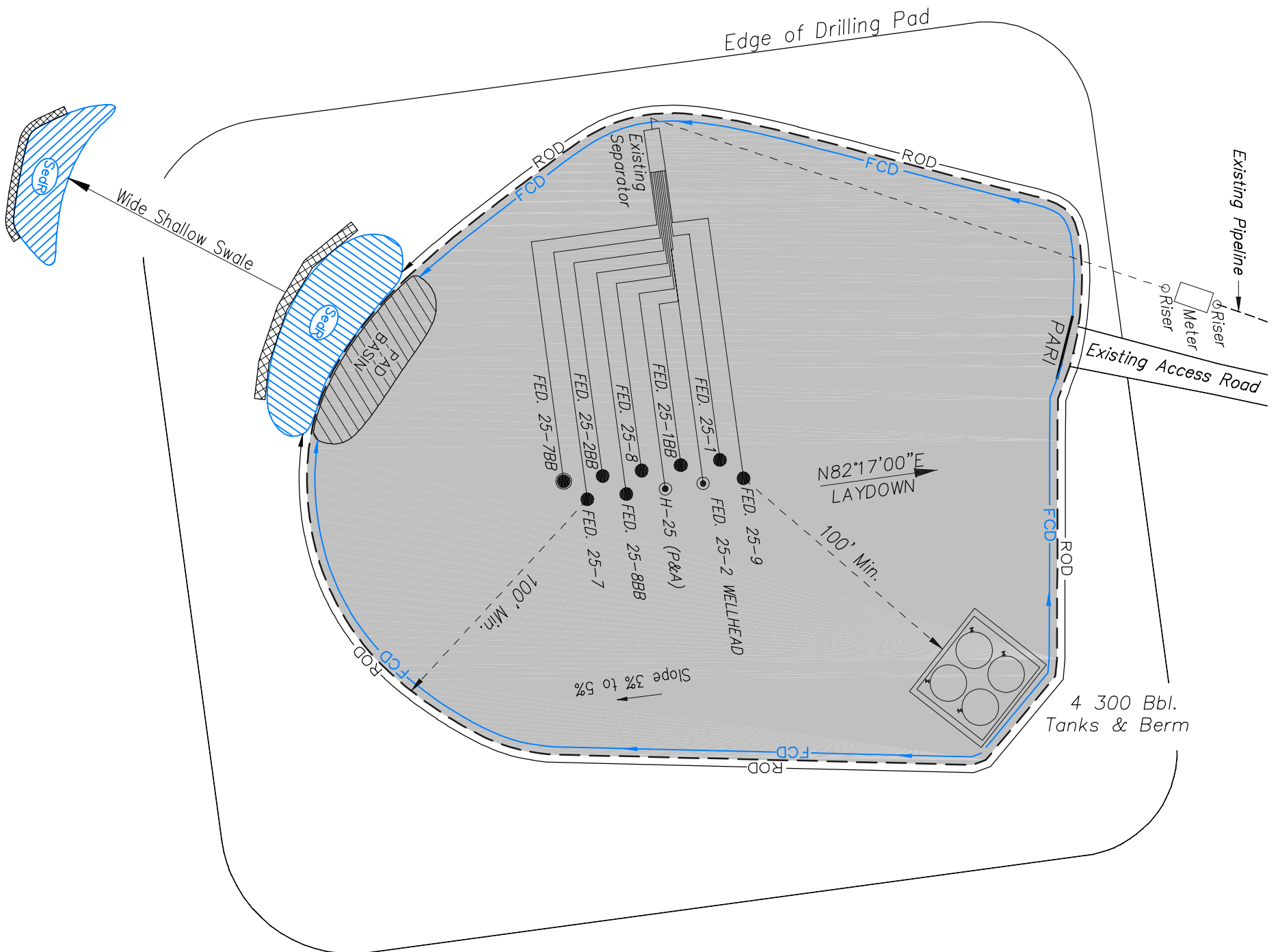
(SCALE IN FEET)



906 Main Street  
Evanston, Wyoming 82930  
Phone No. (307) 789-4545

<b>Rig Layout</b>		<b>Scale: 1" = 50'</b>	<b>SHEET</b> <b>5</b> <b>OF 10</b>	
Project No.	09-04-04	Date Surveyed:		1/14/09
Date Drawn:	8/14/09	Latest Revision Date:		12/16/09

**EnCana Oil & Gas (USA) Inc.**  
**PH-25 Well Pad**  
**PRODUCTION SCHEMATIC**



**NOTES:**

1. Set Tanks High so pad Entrance & Tank Area Can Drain to Pad Basin
2. Gravel Pad 75' from Wells & Around Tanks and Separators
3. Pad Drains to Pad Basin at a 3% to 5% slope
4. BMP Selection and Position may change Depending on Actual Conditions Encountered During the Construction Process

**NOTE:**

Actual Equipment Layout and Reclaimed Pad Surface Area May Change due to Production Requirements or Site Conditions.

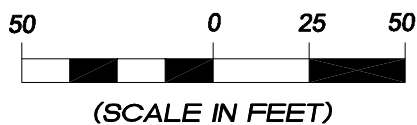
**ESTIMATED AREAS**  
 RECLAIMED AREA: 2.61 ACRES  
 UNRECLAIMED AREA: 1.37 ACRES

**LEGEND**

- = SLASH
- = SEDIMENT TRAP
- = SedR = SEDIMENT RESERVOIR
- = R.O.D. = RUN-ON DIVERSION
- = PERIMETER CONTROL (WATTLES)
- = CUT SLOPE DIVERSION (BERM TOE OF CUT SLOPE)
- = FILL DIVERSION TO SEDIMENT TRAP
- = VGB = VEGETATION BUFFER (UNDISTURBED LAND INSIDE PC)
- = FLOW CONTROL DITCH
- = PARI = PAD/ACCESS ROAD INTERFACE
- = LEVEL SPREADER
- = TOE BERM (PLACED AT TOE OF ALL FILL SLOPES/STOCKPILES)
- = TOPSOIL BERM
- = SEED, ECB & FLEX
- = SEED



906 Main Street  
 Evanston, Wyoming 82930  
 Phone No. (307) 789-4545



<b>Production Schematic</b>		<b>Scale: 1" = 50'</b>	<b>SHEET</b>
Project No.	09-04-04	Date Surveyed:	1/14/09
Date Drawn:	8/26/09	Latest Revision Date:	12/16/09
			<b>6</b>
			<b>OF 10</b>

# EnCana Oil & Gas (USA) Inc.

## Well Pad PH-25

Section 25, T7S, R96W, 6th P.M.

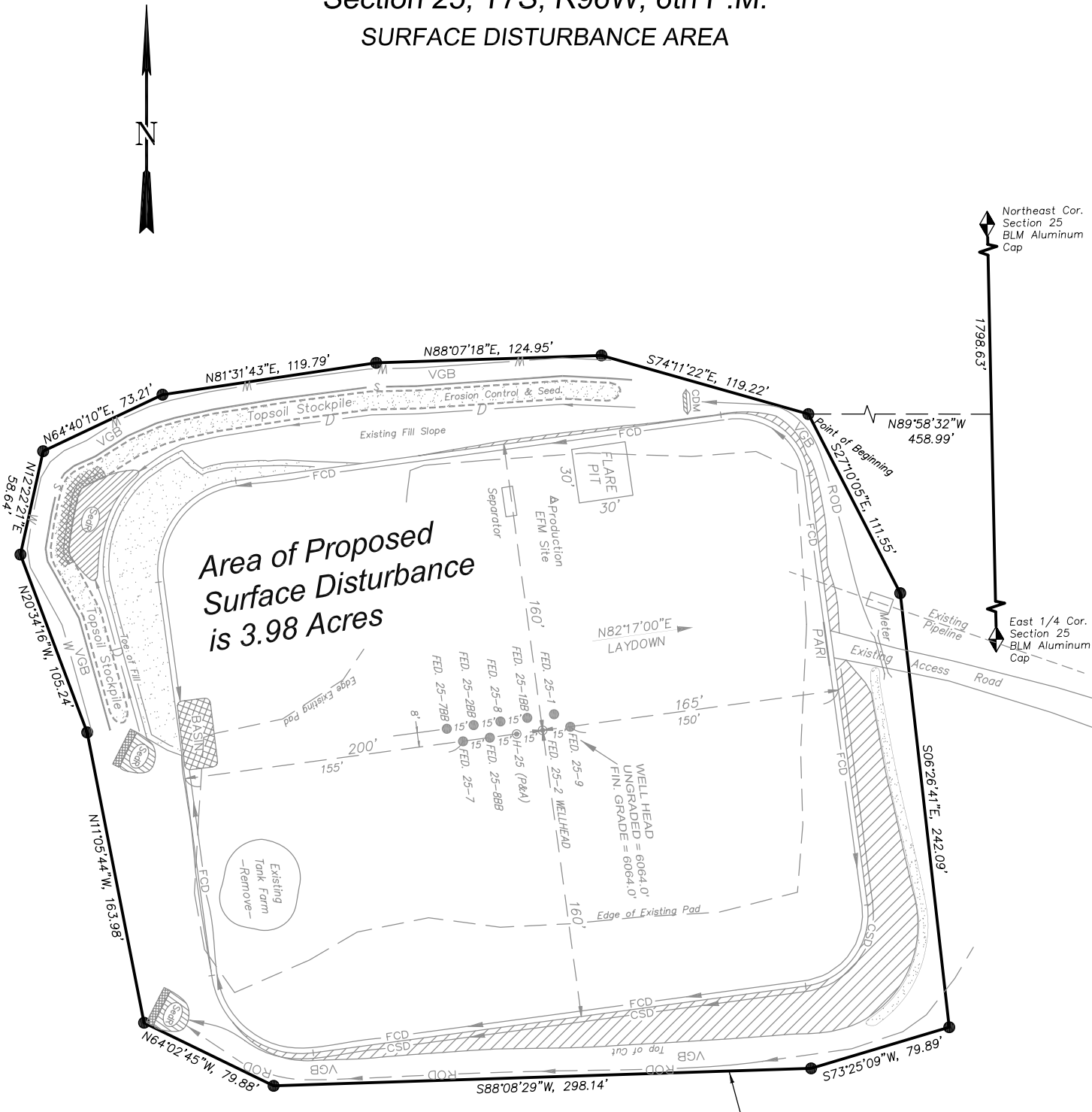
SURFACE DISTURBANCE AREA



Northeast Cor.  
Section 25  
BLM Aluminum  
Cap

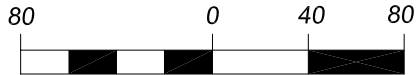
1798.63'

East 1/4 Cor.  
Section 25  
BLM Aluminum  
Cap



**Area of Proposed  
Surface Disturbance  
is 3.98 Acres**

**DISTURBED AREA LIMITS**



(SCALE IN FEET)



906 Main Street  
Evanston, Wyoming 82930  
Phone No. (307) 789-4545

<i>Surface Disturbance</i>		Scale: 1" = 80'	SHEET 7 OF 10
Project No.	09-04-04	Date Surveyed: 1/14/09	
Date Drawn:	8/14/09	Latest Revision Date: 12/16/09	