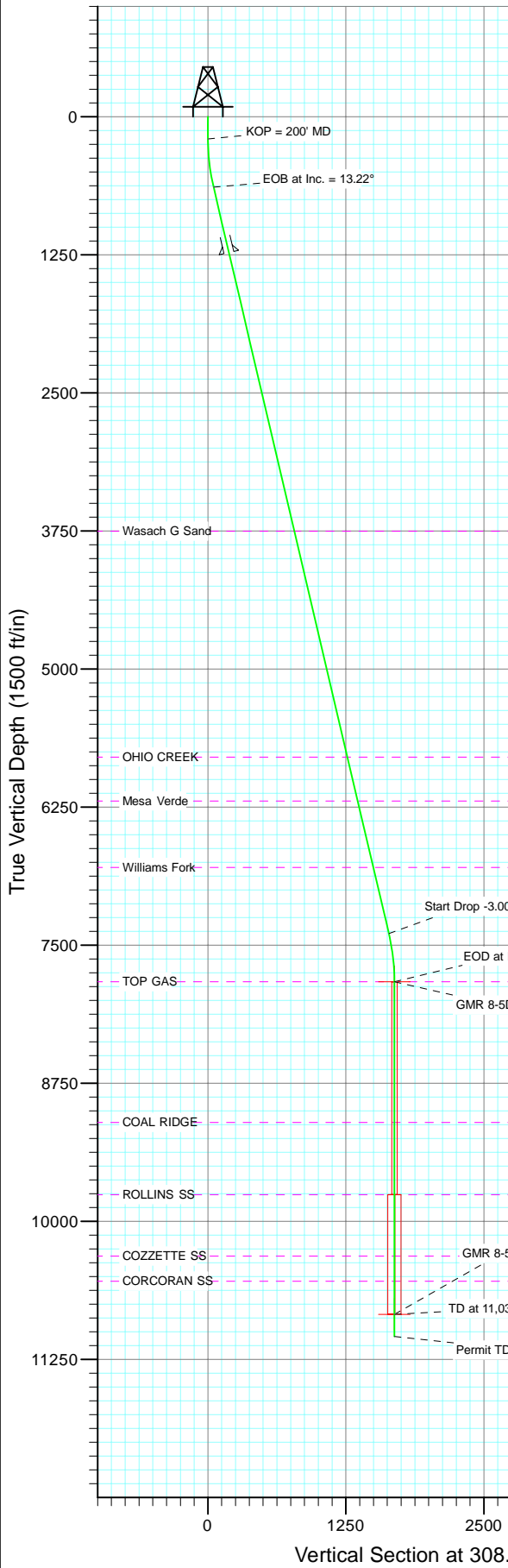
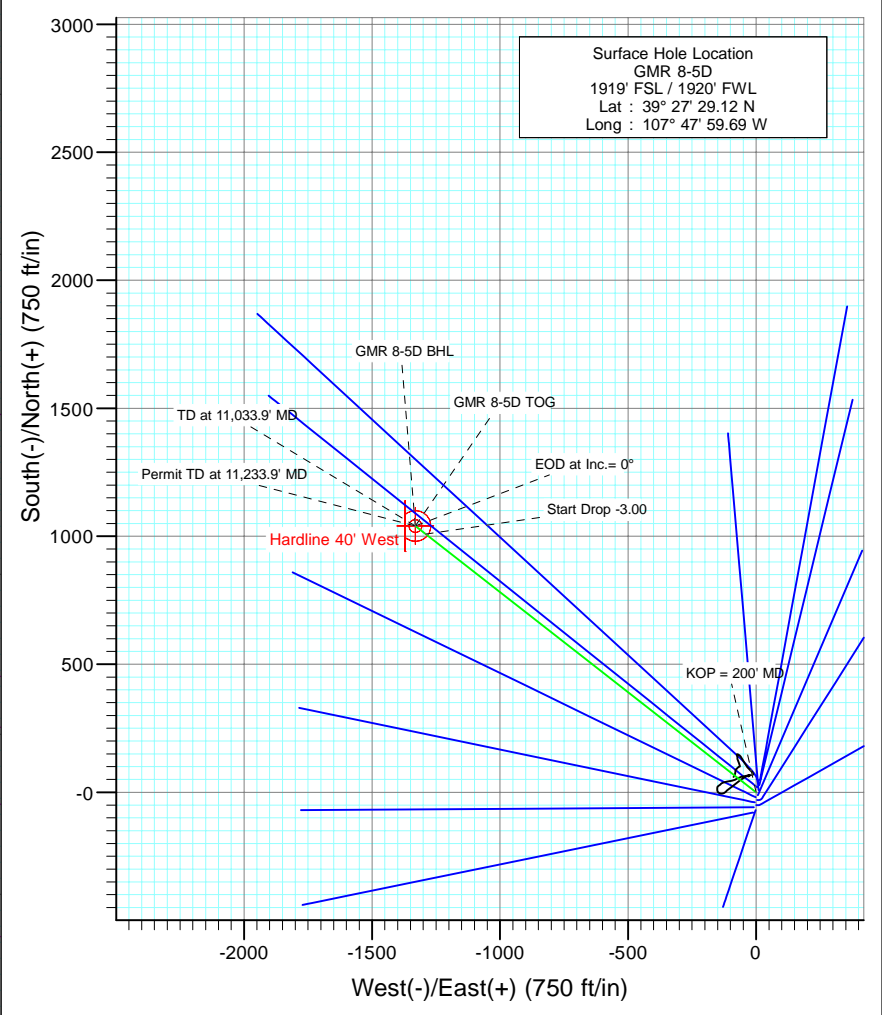




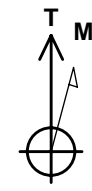
Project: Mamm Creek
 Site: NESW S8 T7S R93W (K8W Pad)
 Well: GMR 8-5D
 Wellbore: DD
 Design: Plan #1



SECTION DETAILS										
Sec	MD	Inc	Azi	TVD	+N/-S	+E/-W	DLeg	TFace	VSec	Target
1	0.0	0.00	0.00	0.0	0.0	0.0	0.00	0.00	0.0	
2	200.0	0.00	0.00	200.0	0.0	0.0	0.00	0.00	0.0	
3	640.8	13.22	308.01	636.9	31.2	-39.9	3.00	308.01	50.6	
4	7582.1	13.22	308.01	7394.1	1009.0	-1291.0	0.00	0.00	1638.5	
5	8022.9	0.00	0.00	7831.0	1040.1	-1330.9	3.00	180.00	1689.2	GMR 8-5D TOG
6	11033.9	0.00	0.00	10842.0	1040.1	-1330.9	0.00	0.00	1689.2	GMR 8-5D BHL
7	11233.9	0.00	0.00	11042.0	1040.1	-1330.9	0.00	0.00	1689.2	



Bottom Hole Location
 GMR 8-5D
 2290' FNL / 640' FWL
 Lat : 39° 27' 39.40"
 Long. : 107° 48' 16.66"



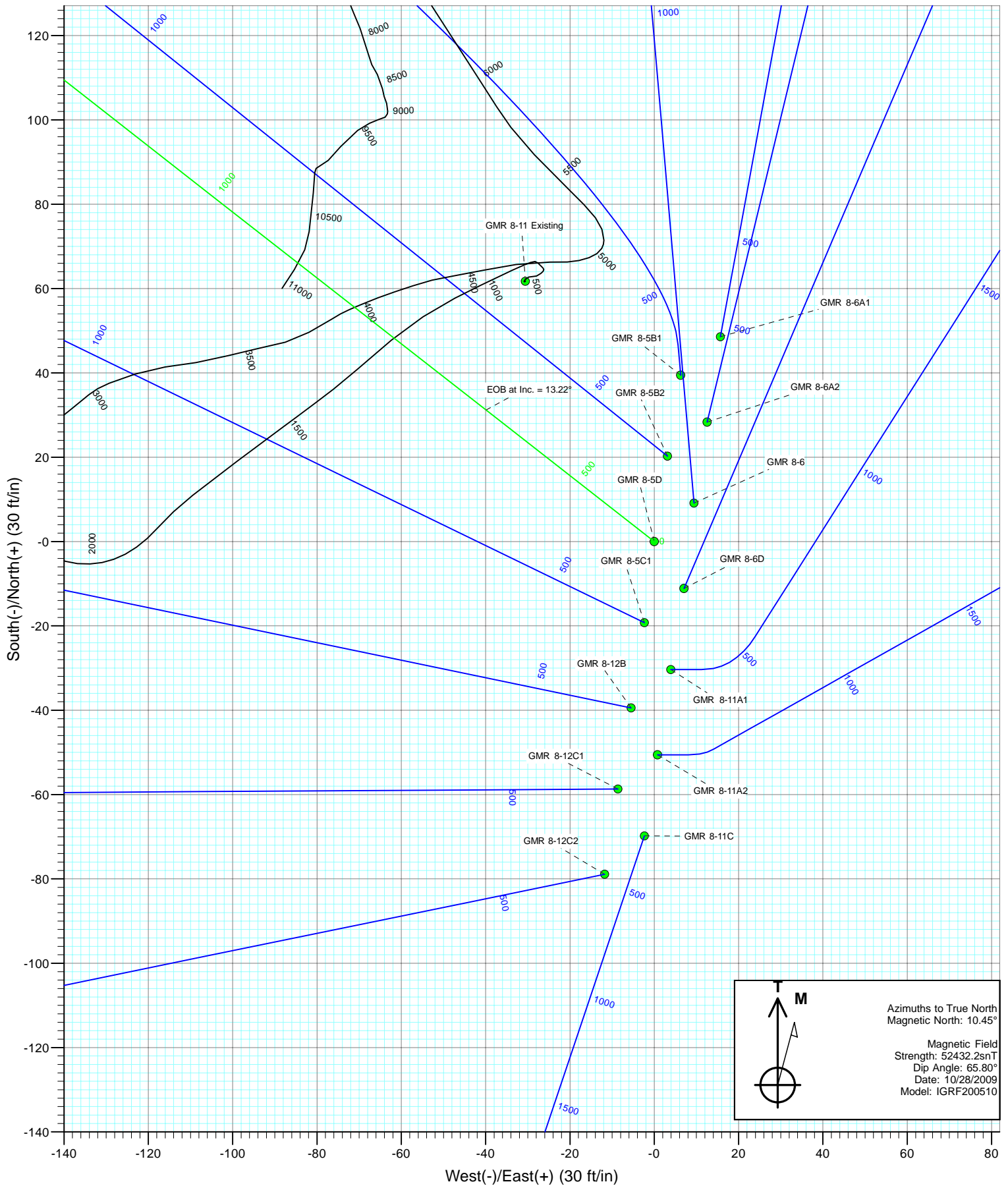
Azimuths to True North
 Magnetic North: 10.45°
 Magnetic Field
 Strength: 52432.2snT
 Dip Angle: 65.80°
 Date: 10/28/2009
 Model: IGRF200510

FORMATION TOP DETAILS		
TVDPath	MDPath	Formation
3753.0	3841.8	Wasach G Sand
5797.0	5941.5	OHIO CREEK
6195.0	6350.3	Mesa Verde
6796.0	6967.7	Williams Fork
7831.0	8022.9	TOP GAS
9104.0	9295.9	COAL RIDGE
9759.0	9950.9	ROLLINS SS
10315.0	10506.9	COZZETTE SS
10542.0	10733.9	CORCORAN SS

DESIGN DETAILS: Plan #1					
Job #95xxx: KR					
KBE @ 7848.0ft (Original Well Elev)					
Target	Azimuth	Origin	N/S	E/W	From TVD
GMR 8-5D BHL	308.01	Slot	0.0	0.0	0.0



Project: Mamm Creek
Site: NESW S8 T7S R93W (K8W Pad)
Well: GMR 8-5D
Wellbore: DD
Design: Plan #1



Cathedral Energy Services

Planning Report

Database:	US EDM 2003.21 Multi Users DB	Local Co-ordinate Reference:	Well GMR 8-5D
Company:	EnCana Oil & Gas (USA) Inc	TVD Reference:	KBE @ 7848.0ft (Original Well Elev)
Project:	Mamm Creek	MD Reference:	KBE @ 7848.0ft (Original Well Elev)
Site:	NESW S8 T7S R93W (K8W Pad)	North Reference:	True
Well:	GMR 8-5D	Survey Calculation Method:	Minimum Curvature
Wellbore:	DD		
Design:	Plan #1		

Project	Mamm Creek		
Map System:	US State Plane 1983	System Datum:	Mean Sea Level
Geo Datum:	North American Datum 1983		
Map Zone:	Colorado Central Zone		

Site	NESW S8 T7S R93W (K8W Pad)				
Site Position:		Northing:	1,599,999.23 ft	Latitude:	39° 27' 29.50 N
From:	Lat/Long	Easting:	2,350,698.86 ft	Longitude:	107° 47' 59.56 W
Position Uncertainty:	0.0 ft	Slot Radius:	in	Grid Convergence:	-1.45 °

Well	GMR 8-5D					
Well Position	+N/-S	0.0 ft	Northing:	1,599,961.05 ft	Latitude:	39° 27' 29.12 N
	+E/-W	0.0 ft	Easting:	2,350,687.70 ft	Longitude:	107° 47' 59.69 W
Position Uncertainty		0.0 ft	Wellhead Elevation:	ft	Ground Level:	7,826.0 ft

Wellbore	DD				
Magnetics	Model Name	Sample Date	Declination	Dip Angle	Field Strength
	IGRF200510	10/28/2009	(°) 10.45	(°) 65.80	(nT) 52,432

Design	Plan #1			
Audit Notes:				
Version:	Phase:	PLAN	Tie On Depth:	0.0
Vertical Section:	Depth From (TVD)	+N/-S	+E/-W	Direction
	(ft)	(ft)	(ft)	(°)
	0.0	0.0	0.0	308.01

Plan Sections										
Measured Depth (ft)	Inclination (°)	Azimuth (°)	Vertical Depth (ft)	+N/-S (ft)	+E/-W (ft)	Dogleg Rate (°/100ft)	Build Rate (°/100ft)	Turn Rate (°/100ft)	TFO (°)	Target
0.0	0.00	0.00	0.0	0.0	0.0	0.00	0.00	0.00	0.00	
200.0	0.00	0.00	200.0	0.0	0.0	0.00	0.00	0.00	0.00	
640.8	13.22	308.01	636.9	31.2	-39.9	3.00	3.00	0.00	308.01	
7,582.1	13.22	308.01	7,394.1	1,009.0	-1,291.0	0.00	0.00	0.00	0.00	
8,022.9	0.00	0.00	7,831.0	1,040.1	-1,330.9	3.00	-3.00	0.00	180.00	GMR 8-5D TOG
11,033.9	0.00	0.00	10,842.0	1,040.1	-1,330.9	0.00	0.00	0.00	0.00	GMR 8-5D BHL
11,233.9	0.00	0.00	11,042.0	1,040.1	-1,330.9	0.00	0.00	0.00	0.00	

Cathedral Energy Services

Planning Report

Database: US EDM 2003.21 Multi Users DB	Local Co-ordinate Reference: Well GMR 8-5D
Company: EnCana Oil & Gas (USA) Inc	TVD Reference: KBE @ 7848.0ft (Original Well Elev)
Project: Mamm Creek	MD Reference: KBE @ 7848.0ft (Original Well Elev)
Site: NESW S8 T7S R93W (K8W Pad)	North Reference: True
Well: GMR 8-5D	Survey Calculation Method: Minimum Curvature
Wellbore: DD	
Design: Plan #1	

Planned Survey									
Measured Depth (ft)	Inclination (°)	Azimuth (°)	Vertical Depth (ft)	+N/-S (ft)	+E/-W (ft)	Vertical Section (ft)	Dogleg Rate (°/100ft)	Build Rate (°/100ft)	Comments / Formations
0.0	0.00	0.00	0.0	0.0	0.0	0.0	0.00	0.00	Hardline 40' West
100.0	0.00	0.00	100.0	0.0	0.0	0.0	0.00	0.00	
200.0	0.00	0.00	200.0	0.0	0.0	0.0	0.00	0.00	KOP = 200' MD
300.0	3.00	308.01	300.0	1.6	-2.1	2.6	3.00	3.00	
400.0	6.00	308.01	399.6	6.4	-8.2	10.5	3.00	3.00	
500.0	9.00	308.01	498.8	14.5	-18.5	23.5	3.00	3.00	
600.0	12.00	308.01	597.1	25.7	-32.9	41.7	3.00	3.00	
640.8	13.22	308.01	636.9	31.2	-39.9	50.6	3.00	3.00	EOB at Inc. = 13.22°
700.0	13.22	308.01	694.5	39.5	-50.6	64.2	0.00	0.00	
800.0	13.22	308.01	791.9	53.6	-68.6	87.1	0.00	0.00	
900.0	13.22	308.01	889.2	67.7	-86.6	109.9	0.00	0.00	
1,000.0	13.22	308.01	986.6	81.8	-104.6	132.8	0.00	0.00	
1,100.0	13.22	308.01	1,083.9	95.9	-122.7	155.7	0.00	0.00	
1,200.0	13.22	308.01	1,181.3	110.0	-140.7	178.6	0.00	0.00	
1,250.0	13.22	308.01	1,229.9	117.0	-149.7	190.0	0.00	0.00	Surface Casing
1,300.0	13.22	308.01	1,278.6	124.0	-158.7	201.4	0.00	0.00	
1,400.0	13.22	308.01	1,376.0	138.1	-176.7	224.3	0.00	0.00	
1,500.0	13.22	308.01	1,473.3	152.2	-194.8	247.2	0.00	0.00	
1,600.0	13.22	308.01	1,570.7	166.3	-212.8	270.1	0.00	0.00	
1,700.0	13.22	308.01	1,668.0	180.4	-230.8	292.9	0.00	0.00	
1,800.0	13.22	308.01	1,765.4	194.5	-248.8	315.8	0.00	0.00	
1,900.0	13.22	308.01	1,862.7	208.6	-266.9	338.7	0.00	0.00	
2,000.0	13.22	308.01	1,960.1	222.6	-284.9	361.6	0.00	0.00	
2,100.0	13.22	308.01	2,057.4	236.7	-302.9	384.4	0.00	0.00	
2,200.0	13.22	308.01	2,154.8	250.8	-320.9	407.3	0.00	0.00	
2,300.0	13.22	308.01	2,252.1	264.9	-339.0	430.2	0.00	0.00	
2,400.0	13.22	308.01	2,349.4	279.0	-357.0	453.1	0.00	0.00	
2,500.0	13.22	308.01	2,446.8	293.1	-375.0	476.0	0.00	0.00	
2,600.0	13.22	308.01	2,544.1	307.2	-393.0	498.8	0.00	0.00	
2,700.0	13.22	308.01	2,641.5	321.3	-411.1	521.7	0.00	0.00	
2,800.0	13.22	308.01	2,738.8	335.3	-429.1	544.6	0.00	0.00	
2,900.0	13.22	308.01	2,836.2	349.4	-447.1	567.5	0.00	0.00	
3,000.0	13.22	308.01	2,933.5	363.5	-465.1	590.3	0.00	0.00	
3,100.0	13.22	308.01	3,030.9	377.6	-483.2	613.2	0.00	0.00	
3,200.0	13.22	308.01	3,128.2	391.7	-501.2	636.1	0.00	0.00	
3,300.0	13.22	308.01	3,225.6	405.8	-519.2	659.0	0.00	0.00	
3,400.0	13.22	308.01	3,322.9	419.9	-537.2	681.8	0.00	0.00	
3,500.0	13.22	308.01	3,420.3	433.9	-555.3	704.7	0.00	0.00	
3,600.0	13.22	308.01	3,517.6	448.0	-573.3	727.6	0.00	0.00	
3,700.0	13.22	308.01	3,615.0	462.1	-591.3	750.5	0.00	0.00	
3,800.0	13.22	308.01	3,712.3	476.2	-609.3	773.3	0.00	0.00	
3,841.8	13.22	308.01	3,753.0	482.1	-616.9	782.9	0.00	0.00	Wasach G Sand
3,900.0	13.22	308.01	3,809.7	490.3	-627.4	796.2	0.00	0.00	
4,000.0	13.22	308.01	3,907.0	504.4	-645.4	819.1	0.00	0.00	
4,100.0	13.22	308.01	4,004.4	518.5	-663.4	842.0	0.00	0.00	
4,200.0	13.22	308.01	4,101.7	532.5	-681.4	864.8	0.00	0.00	
4,300.0	13.22	308.01	4,199.1	546.6	-699.5	887.7	0.00	0.00	
4,400.0	13.22	308.01	4,296.4	560.7	-717.5	910.6	0.00	0.00	
4,500.0	13.22	308.01	4,393.8	574.8	-735.5	933.5	0.00	0.00	
4,600.0	13.22	308.01	4,491.1	588.9	-753.5	956.3	0.00	0.00	
4,700.0	13.22	308.01	4,588.5	603.0	-771.5	979.2	0.00	0.00	
4,800.0	13.22	308.01	4,685.8	617.1	-789.6	1,002.1	0.00	0.00	

Cathedral Energy Services

Planning Report

Database: US EDM 2003.21 Multi Users DB
Company: EnCana Oil & Gas (USA) Inc
Project: Mamm Creek
Site: NESW S8 T7S R93W (K8W Pad)
Well: GMR 8-5D
Wellbore: DD
Design: Plan #1

Local Co-ordinate Reference: Well GMR 8-5D
TVD Reference: KBE @ 7848.0ft (Original Well Elev)
MD Reference: KBE @ 7848.0ft (Original Well Elev)
North Reference: True
Survey Calculation Method: Minimum Curvature

Planned Survey

Measured Depth (ft)	Inclination (°)	Azimuth (°)	Vertical Depth (ft)	+N/-S (ft)	+E/-W (ft)	Vertical Section (ft)	Dogleg Rate (°/100ft)	Build Rate (°/100ft)	Comments / Formations
4,900.0	13.22	308.01	4,783.2	631.2	-807.6	1,025.0	0.00	0.00	
5,000.0	13.22	308.01	4,880.5	645.2	-825.6	1,047.8	0.00	0.00	
5,100.0	13.22	308.01	4,977.9	659.3	-843.6	1,070.7	0.00	0.00	
5,200.0	13.22	308.01	5,075.2	673.4	-861.7	1,093.6	0.00	0.00	
5,300.0	13.22	308.01	5,172.5	687.5	-879.7	1,116.5	0.00	0.00	
5,400.0	13.22	308.01	5,269.9	701.6	-897.7	1,139.4	0.00	0.00	
5,500.0	13.22	308.01	5,367.2	715.7	-915.7	1,162.2	0.00	0.00	
5,600.0	13.22	308.01	5,464.6	729.8	-933.8	1,185.1	0.00	0.00	
5,700.0	13.22	308.01	5,561.9	743.8	-951.8	1,208.0	0.00	0.00	
5,800.0	13.22	308.01	5,659.3	757.9	-969.8	1,230.9	0.00	0.00	
5,900.0	13.22	308.01	5,756.6	772.0	-987.8	1,253.7	0.00	0.00	
5,941.5	13.22	308.01	5,797.0	777.9	-995.3	1,263.2	0.00	0.00	OHIO CREEK
6,000.0	13.22	308.01	5,854.0	786.1	-1,005.9	1,276.6	0.00	0.00	
6,100.0	13.22	308.01	5,951.3	800.2	-1,023.9	1,299.5	0.00	0.00	
6,200.0	13.22	308.01	6,048.7	814.3	-1,041.9	1,322.4	0.00	0.00	
6,300.0	13.22	308.01	6,146.0	828.4	-1,059.9	1,345.2	0.00	0.00	
6,350.3	13.22	308.01	6,195.0	835.4	-1,069.0	1,356.7	0.00	0.00	Mesa Verde
6,400.0	13.22	308.01	6,243.4	842.4	-1,078.0	1,368.1	0.00	0.00	
6,500.0	13.22	308.01	6,340.7	856.5	-1,096.0	1,391.0	0.00	0.00	
6,600.0	13.22	308.01	6,438.1	870.6	-1,114.0	1,413.9	0.00	0.00	
6,700.0	13.22	308.01	6,535.4	884.7	-1,132.0	1,436.7	0.00	0.00	
6,800.0	13.22	308.01	6,632.8	898.8	-1,150.1	1,459.6	0.00	0.00	
6,900.0	13.22	308.01	6,730.1	912.9	-1,168.1	1,482.5	0.00	0.00	
6,967.7	13.22	308.01	6,796.0	922.4	-1,180.3	1,498.0	0.00	0.00	Williams Fork
7,000.0	13.22	308.01	6,827.5	927.0	-1,186.1	1,505.4	0.00	0.00	
7,100.0	13.22	308.01	6,924.8	941.1	-1,204.1	1,528.2	0.00	0.00	
7,200.0	13.22	308.01	7,022.2	955.1	-1,222.2	1,551.1	0.00	0.00	
7,300.0	13.22	308.01	7,119.5	969.2	-1,240.2	1,574.0	0.00	0.00	
7,400.0	13.22	308.01	7,216.9	983.3	-1,258.2	1,596.9	0.00	0.00	
7,500.0	13.22	308.01	7,314.2	997.4	-1,276.2	1,619.7	0.00	0.00	
7,582.1	13.22	308.01	7,394.1	1,009.0	-1,291.0	1,638.5	0.00	0.00	Start Drop -3.00
7,600.0	12.69	308.01	7,411.6	1,011.4	-1,294.2	1,642.5	3.00	-3.00	
7,700.0	9.69	308.01	7,509.7	1,023.4	-1,309.5	1,661.9	3.00	-3.00	
7,800.0	6.69	308.01	7,608.6	1,032.1	-1,320.7	1,676.2	3.00	-3.00	
7,900.0	3.69	308.01	7,708.2	1,037.7	-1,327.8	1,685.2	3.00	-3.00	
8,000.0	0.69	308.01	7,808.1	1,040.1	-1,330.8	1,689.0	3.00	-3.00	
8,022.9	0.00	0.00	7,831.0	1,040.1	-1,330.9	1,689.2	3.00	-3.00	EOD at Inc.= 0° - TOP GAS - GMR 8-5D TOG
8,100.0	0.00	0.00	7,908.1	1,040.1	-1,330.9	1,689.2	0.00	0.00	
8,200.0	0.00	0.00	8,008.1	1,040.1	-1,330.9	1,689.2	0.00	0.00	
8,300.0	0.00	0.00	8,108.1	1,040.1	-1,330.9	1,689.2	0.00	0.00	
8,400.0	0.00	0.00	8,208.1	1,040.1	-1,330.9	1,689.2	0.00	0.00	
8,500.0	0.00	0.00	8,308.1	1,040.1	-1,330.9	1,689.2	0.00	0.00	
8,600.0	0.00	0.00	8,408.1	1,040.1	-1,330.9	1,689.2	0.00	0.00	
8,700.0	0.00	0.00	8,508.1	1,040.1	-1,330.9	1,689.2	0.00	0.00	
8,800.0	0.00	0.00	8,608.1	1,040.1	-1,330.9	1,689.2	0.00	0.00	
8,900.0	0.00	0.00	8,708.1	1,040.1	-1,330.9	1,689.2	0.00	0.00	
9,000.0	0.00	0.00	8,808.1	1,040.1	-1,330.9	1,689.2	0.00	0.00	
9,100.0	0.00	0.00	8,908.1	1,040.1	-1,330.9	1,689.2	0.00	0.00	
9,200.0	0.00	0.00	9,008.1	1,040.1	-1,330.9	1,689.2	0.00	0.00	
9,295.9	0.00	0.00	9,104.0	1,040.1	-1,330.9	1,689.2	0.00	0.00	COAL RIDGE
9,300.0	0.00	0.00	9,108.1	1,040.1	-1,330.9	1,689.2	0.00	0.00	
9,400.0	0.00	0.00	9,208.1	1,040.1	-1,330.9	1,689.2	0.00	0.00	

Cathedral Energy Services

Planning Report

Database:	US EDM 2003.21 Multi Users DB	Local Co-ordinate Reference:	Well GMR 8-5D
Company:	EnCana Oil & Gas (USA) Inc	TVD Reference:	KBE @ 7848.0ft (Original Well Elev)
Project:	Mamm Creek	MD Reference:	KBE @ 7848.0ft (Original Well Elev)
Site:	NESW S8 T7S R93W (K8W Pad)	North Reference:	True
Well:	GMR 8-5D	Survey Calculation Method:	Minimum Curvature
Wellbore:	DD		
Design:	Plan #1		

Planned Survey									
Measured Depth (ft)	Inclination (°)	Azimuth (°)	Vertical Depth (ft)	+N/-S (ft)	+E/-W (ft)	Vertical Section (ft)	Dogleg Rate (°/100ft)	Build Rate (°/100ft)	Comments / Formations
9,500.0	0.00	0.00	9,308.1	1,040.1	-1,330.9	1,689.2	0.00	0.00	
9,600.0	0.00	0.00	9,408.1	1,040.1	-1,330.9	1,689.2	0.00	0.00	
9,700.0	0.00	0.00	9,508.1	1,040.1	-1,330.9	1,689.2	0.00	0.00	
9,800.0	0.00	0.00	9,608.1	1,040.1	-1,330.9	1,689.2	0.00	0.00	
9,900.0	0.00	0.00	9,708.1	1,040.1	-1,330.9	1,689.2	0.00	0.00	
9,950.9	0.00	0.00	9,759.0	1,040.1	-1,330.9	1,689.2	0.00	0.00	ROLLINS SS
10,000.0	0.00	0.00	9,808.1	1,040.1	-1,330.9	1,689.2	0.00	0.00	
10,100.0	0.00	0.00	9,908.1	1,040.1	-1,330.9	1,689.2	0.00	0.00	
10,200.0	0.00	0.00	10,008.1	1,040.1	-1,330.9	1,689.2	0.00	0.00	
10,300.0	0.00	0.00	10,108.1	1,040.1	-1,330.9	1,689.2	0.00	0.00	
10,400.0	0.00	0.00	10,208.1	1,040.1	-1,330.9	1,689.2	0.00	0.00	
10,500.0	0.00	0.00	10,308.1	1,040.1	-1,330.9	1,689.2	0.00	0.00	
10,506.9	0.00	0.00	10,315.0	1,040.1	-1,330.9	1,689.2	0.00	0.00	COZZETTE SS
10,600.0	0.00	0.00	10,408.1	1,040.1	-1,330.9	1,689.2	0.00	0.00	
10,700.0	0.00	0.00	10,508.1	1,040.1	-1,330.9	1,689.2	0.00	0.00	
10,733.9	0.00	0.00	10,542.0	1,040.1	-1,330.9	1,689.2	0.00	0.00	CORCORAN SS
10,800.0	0.00	0.00	10,608.1	1,040.1	-1,330.9	1,689.2	0.00	0.00	
10,900.0	0.00	0.00	10,708.1	1,040.1	-1,330.9	1,689.2	0.00	0.00	
11,000.0	0.00	0.00	10,808.1	1,040.1	-1,330.9	1,689.2	0.00	0.00	
11,033.9	0.00	0.00	10,842.0	1,040.1	-1,330.9	1,689.2	0.00	0.00	TD at 11,033.9' MD - GMR 8-5D BHL
11,100.0	0.00	0.00	10,908.1	1,040.1	-1,330.9	1,689.2	0.00	0.00	
11,200.0	0.00	0.00	11,008.1	1,040.1	-1,330.9	1,689.2	0.00	0.00	
11,233.9	0.00	0.00	11,042.0	1,040.1	-1,330.9	1,689.2	0.00	0.00	Permit TD at 11,233.9' MD

Targets									
Target Name	Dip Angle (°)	Dip Dir. (°)	TVD (ft)	+N/-S (ft)	+E/-W (ft)	Northing (ft)	Easting (ft)	Latitude	Longitude
GMR 8-5D BHL - hit/miss target - Shape	0.00	0.00	10,842.0	1,040.1	-1,330.9	1,601,034.54	2,349,383.53	39° 27' 39.40 N	107° 48' 16.66 W
- plan hits target center - Circle (radius 60.0)									
GMR 8-5D TOG - plan hits target center - Circle (radius 25.0)	0.00	0.00	7,831.0	1,040.1	-1,330.9	1,601,034.54	2,349,383.53	39° 27' 39.40 N	107° 48' 16.66 W
Hardline 40' West - plan misses target center by 10987.6ft at 0.0ft MD (0.0 TVD, 0.0 N, 0.0 E) - Polygon	0.00	0.00	-10,857.0	1,040.1	-1,330.9	1,601,034.54	2,349,383.53	39° 27' 39.40 N	107° 48' 16.66 W
Point 1			-10,857.0	100.0	-40.0	1,601,135.52	2,349,346.07		
Point 2			-10,857.0	-100.0	-40.0	1,600,935.59	2,349,341.01		

Casing Points				
Measured Depth (ft)	Vertical Depth (ft)	Name	Casing Diameter (in)	Hole Diameter (in)
1,250.0	1,229.9	Surface Casing	5.500	6.000

Cathedral Energy Services

Planning Report

Database:	US EDM 2003.21 Multi Users DB	Local Co-ordinate Reference:	Well GMR 8-5D
Company:	EnCana Oil & Gas (USA) Inc	TVD Reference:	KBE @ 7848.0ft (Original Well Elev)
Project:	Mamm Creek	MD Reference:	KBE @ 7848.0ft (Original Well Elev)
Site:	NESW S8 T7S R93W (K8W Pad)	North Reference:	True
Well:	GMR 8-5D	Survey Calculation Method:	Minimum Curvature
Wellbore:	DD		
Design:	Plan #1		

Formations						
Measured Depth (ft)	Vertical Depth (ft)	Name	Lithology	Dip (°)	Dip Direction (°)	
3,841.8	3,753.0	Wasach G Sand				
5,941.5	5,797.0	OHIO CREEK				
6,350.3	6,195.0	Mesa Verde				
6,967.7	6,796.0	Williams Fork				
8,022.9	7,831.0	TOP GAS				
9,295.9	9,104.0	COAL RIDGE				
9,950.9	9,759.0	ROLLINS SS				
10,506.9	10,315.0	COZZETTE SS				
10,733.9	10,542.0	CORCORAN SS				

Plan Annotations					
Measured Depth (ft)	Vertical Depth (ft)	Local Coordinates		Comment	
		+N/-S (ft)	+E/-W (ft)		
200.0	200.0	0.0	0.0	KOP = 200' MD	
640.8	636.9	31.2	-39.9	EOB at Inc. = 13.22°	
7,582.1	7,394.1	1,009.0	-1,291.0	Start Drop -3.00	
8,022.9	7,831.0	1,040.1	-1,330.9	EOD at Inc.= 0°	
11,033.9	10,842.0	1,040.1	-1,330.9	TD at 11,033.9' MD	
11,233.9	11,042.0	1,040.1	-1,330.9	Permit TD at 11,233.9' MD	