



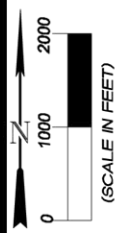
SEE TOPO "A"

Existing Location Well Pad (PN-20-7-95)

1.08 mi.

6.0 mi. to C.R. 300

PF-29



EnCana Oil & Gas (USA) Inc.
 Well Pad PN-20-7-95
 Section 20, T7S, R95W, 6th P.M.
 Garfield County, Colorado



906 Main Street
 Evanston, Wyoming 82930
 Phone No. (307) 789-4545

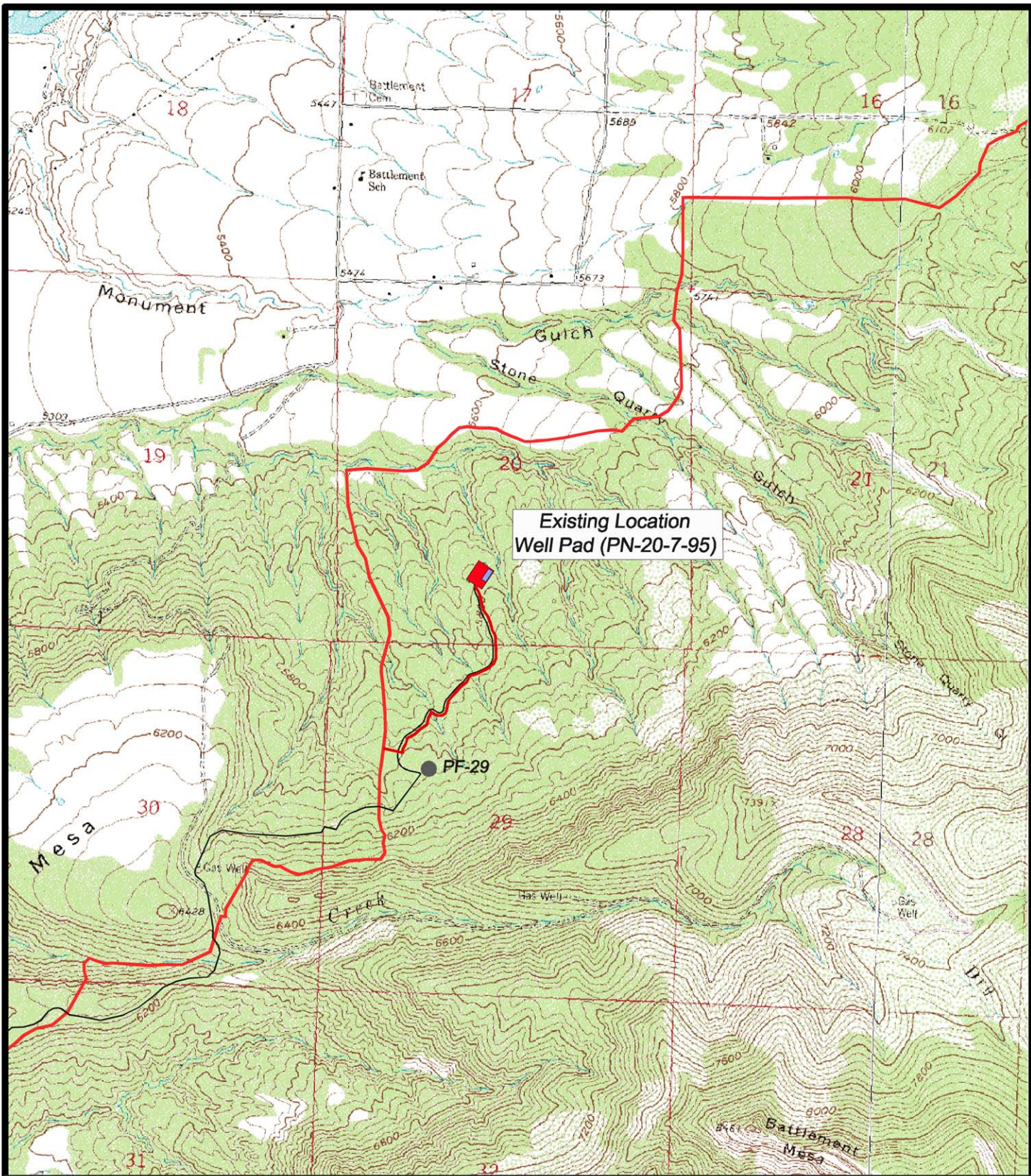
DATE: July 1, 2008
 SCALE: 1" = 2000'
 PROJECT NO.: 05-04-73

—LEGEND—

— Existing Road

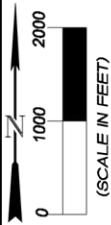
Topo "B"

SHEET 9 OF 10



Existing Location
Well Pad (PN-20-7-95)

PF-29



EnCana Oil & Gas (USA) Inc.

Well Pad PN-20-7-95

**Section 20, T7S, R95W, 6th P.M.
Garfield County, Colorado**



906 Main Street
Evanston, Wyoming 82930
Phone No. (307) 789-4545

DATE: July 1, 2008

SCALE: 1" = 2000'

PROJECT NO.: 05-04-73

—LEGEND—

— Proposed Access

— Existing Gas Line

**Topo
"C"**

SHEET
10
OF 10