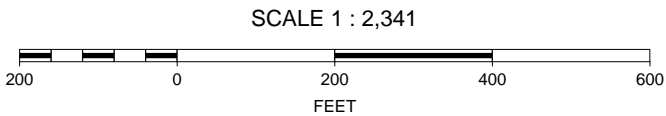
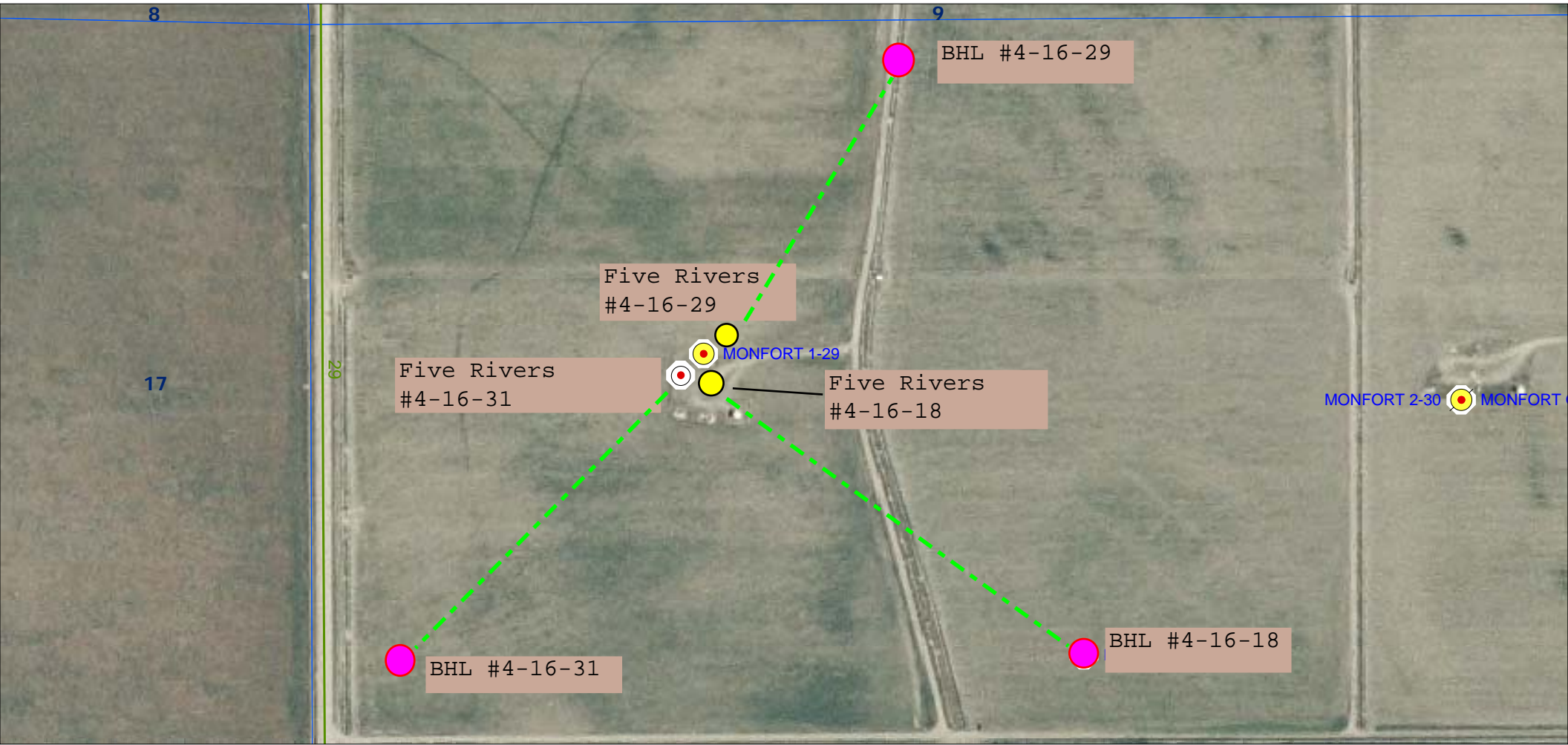


KPK planned locations: Five Rivers #4-16-31 NWNW; Five Rivers #4-16-18 NWNW;  
Five Rivers #4-16-29 NWNW (all directional wellbores)  
KPK existing location: Monfort #1-29 (API 05-123-12229) vertical wellbore



Multi-well plan map

K. P. Kauffman Company, Inc.

Existing well pads and new well locations with  
directional wellbores and Bottom Hole Locations (BHL)

N/2 NW/4 Section 16-T4N-R66W

Weld Co., Colorado

