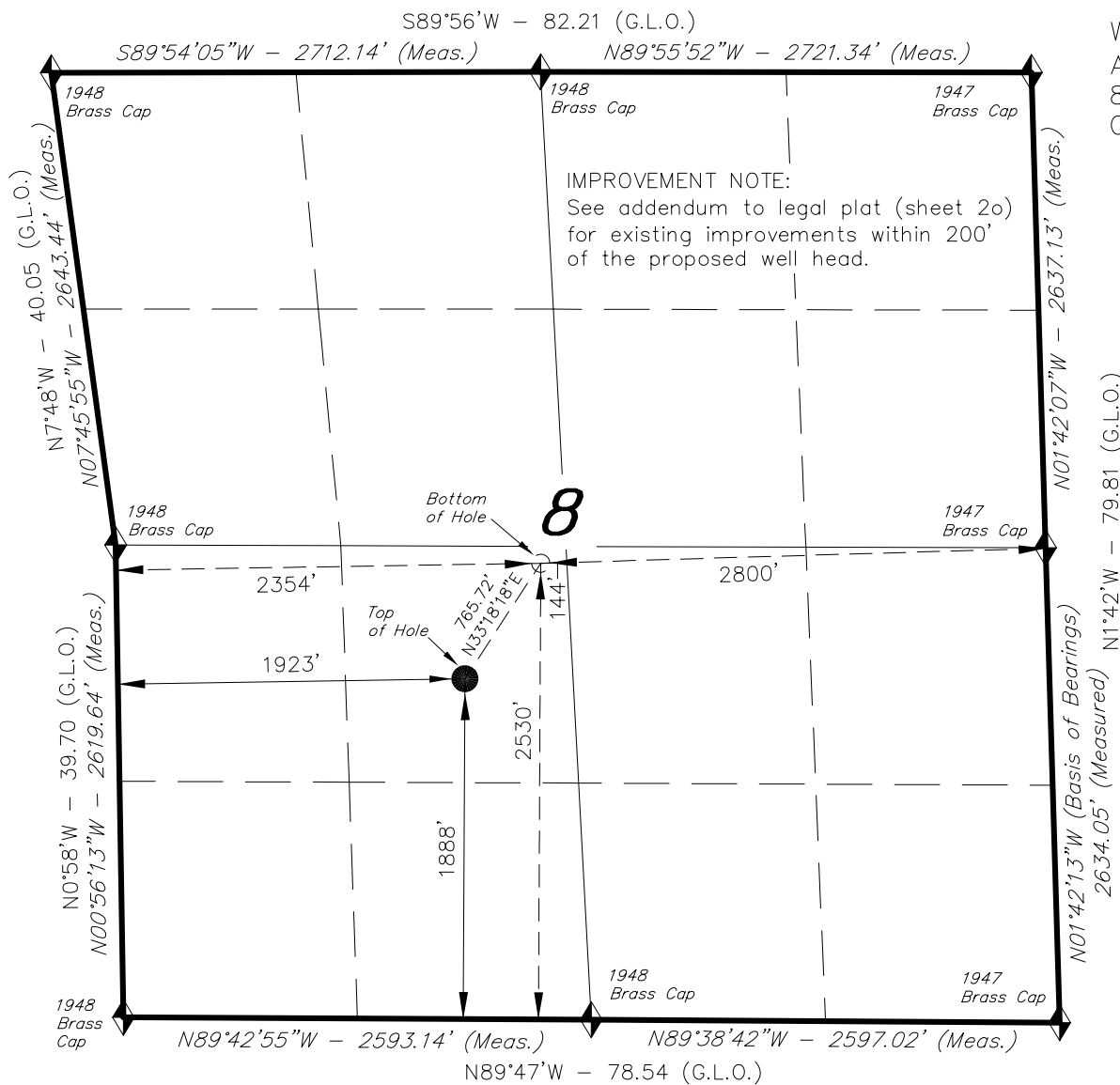
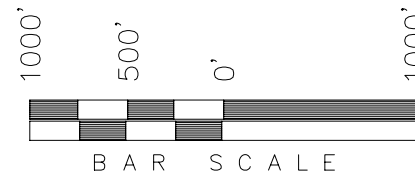


T7S, R93W, 6th P.M.

ENCANA OIL & GAS (USA) INC

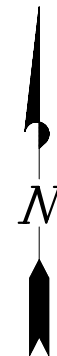


WELL LOCATION, GMR 8-11A1 (K8W), LOCATED AS SHOWN IN THE NE 1/4 SW 1/4 OF SECTION 8, T7S, R93W, 6th P.M. GARFIELD COUNTY, COLORADO.



NOTES:

1. Well footages are measured at right angles to the Section Lines.
2. Bearings are based on Global Positioning Satellite observations.



**WELL LOCATION:
GMR 8-11A1 (K8W)**

ELEV. EXISTING GRADED GROUND = 7826'

THIS IS TO CERTIFY THAT THE ABOVE PLAT WAS PREPARED FROM FIELD NOTES OF SURVEYS MADE BY ME OR UNDER MY SUPERVISION, AND THAT THE SAME ARE TRUE AND CORRECT TO THE BEST OF MY KNOWLEDGE AND BELIEF.

Stacy Stewart
30125
REGISTERED LAND SURVEYOR
REGISTRATION No. 30125
STATE OF COLORADO

◆ = SECTION CORNERS LOCATED

NAD 83 (SURFACE LOCATION)

LATITUDE = 39°27'28.82"
(39.458005)
LONGITUDE = 107°47'59.64"
(107.799900)

Basis of elevation is the Rifle 2
Triangulation Station. 39°31'53.80" N Lat.
& 107°47'07.78" W Long. (NAD 83).
Elevation = 5323.1' (NAVD88).

TRI STATE LAND SURVEYING & CONSULTING

180 NORTH VERNAL AVE. - VERNAL, UTAH 84078
(435) 781-2501

DATE SURVEYED: 09-29-09	SURVEYED BY: D.S.	SHEET 21 OF 11
DATE DRAWN: 10-08-09	DRAWN BY: M.W.	
REVISED: 10-27-09 F.T.M.	SCALE: 1" = 1000'	