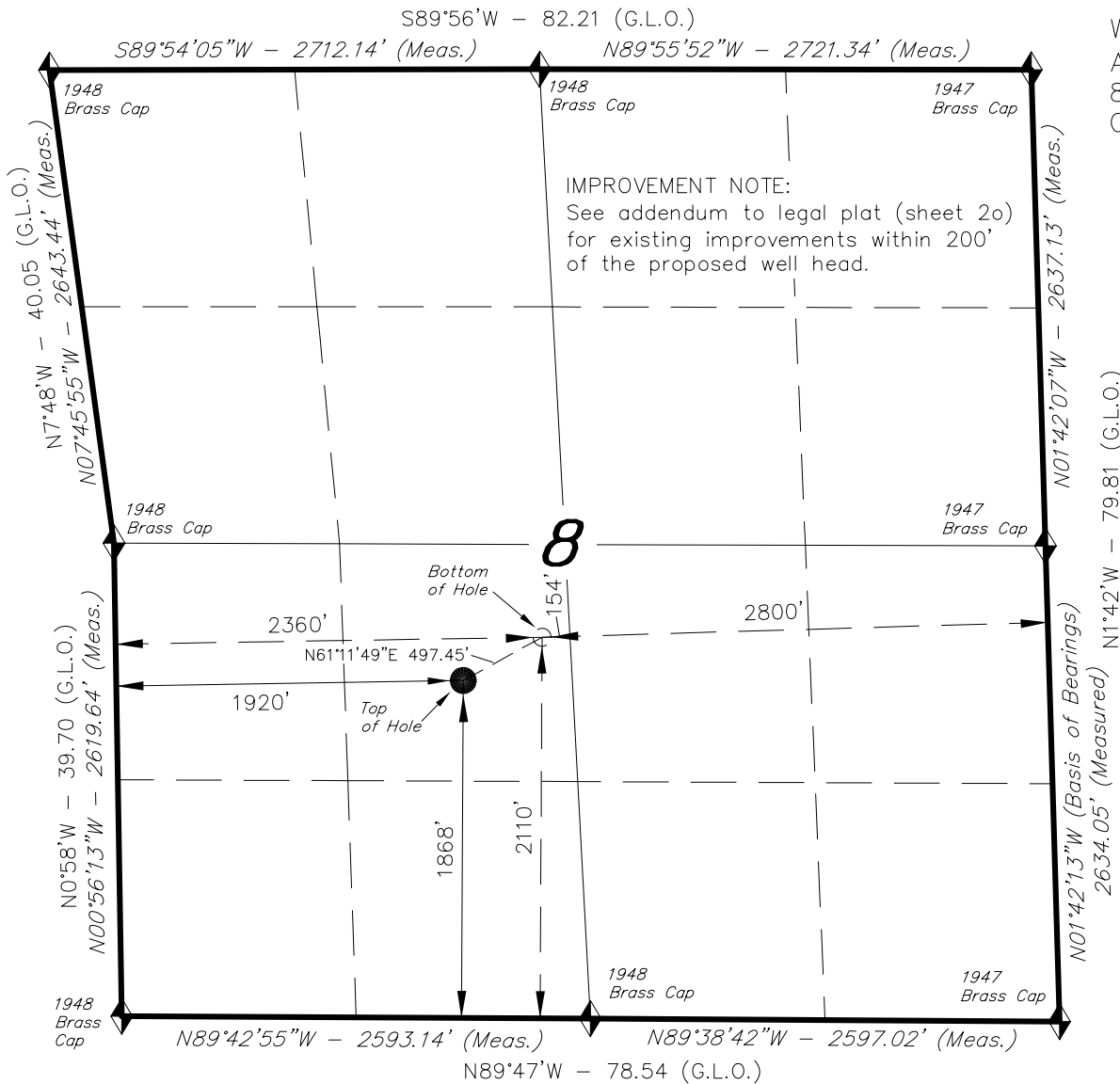
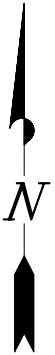


# T7S, R93W, 6th P.M.

ENCANA OIL & GAS (USA) INC



WELL LOCATION, GMR 8-11A2 (K8W), LOCATED AS SHOWN IN THE NE 1/4 SW 1/4 OF SECTION 8, T7S, R93W, 6th P.M. GARFIELD COUNTY, COLORADO.



**NOTES:**

1. Well footages are measured at right angles to the Section Lines.
2. Bearings are based on Global Positioning Satellite observations.

**WELL LOCATION:  
GMR 8-11A2 (K8W)**

ELEV. EXISTING GRADED GROUND = 7826'

THIS IS TO CERTIFY THAT THE ABOVE PLAT WAS PREPARED FROM FIELD NOTES OF SURVEYS MADE BY ME OR UNDER MY SUPERVISION, AND THAT THE SAME ARE TRUE AND CORRECT TO THE BEST OF MY KNOWLEDGE AND BELIEF.

*Stacy Stewart*  
# 30125  
REGISTERED LAND SURVEYOR  
REGISTRATION No. 30125  
STATE OF COLORADO

◆ = SECTION CORNERS LOCATED

Basis of elevation is the Rifle 2  
Triangulation Station. 39°31'53.80" N Lat.  
& 107°47'07.78" W Long. (NAD 83).  
Elevation = 5323.1' (NAVD88).

**NAD 83 (SURFACE LOCATION)**

LATITUDE = 39°27'28.62"  
(39.457951)  
LONGITUDE = 107°47'59.68"  
(107.799911)

**TRI STATE LAND SURVEYING & CONSULTING**

180 NORTH VERNAL AVE. - VERNAL, UTAH 84078  
(435) 781-2501

DATE SURVEYED: 09-29-09	SURVEYED BY: D.S.	<b>SHEET 2m OF 11</b>
DATE DRAWN: 10-08-09	DRAWN BY: M.W.	
REVISED: 10-27-09 F.T.M.	SCALE: 1" = 1000'	