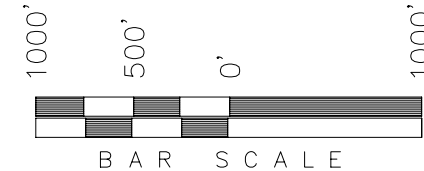


T7S, R93W, 6th P.M.

ENCANA OIL & GAS (USA) INC

WELL LOCATION, GMR 8-11C (K8W), LOCATED AS SHOWN IN THE NE 1/4 SW 1/4 OF SECTION 8, T7S, R93W, 6th P.M. GARFIELD COUNTY, COLORADO.

IMPROVEMENT NOTE:
See addendum to legal plat (sheet 2o)
for existing improvements within 200'
of the proposed well head.



NOTES:

1. Well footages are measured at right angles to the Section Lines.
2. Bearings are based on Global Positioning Satellite observations.

WELL LOCATION: GMR 8-11C (K8W)

ELEV. EXISTING GRADED GROUND = 7826'

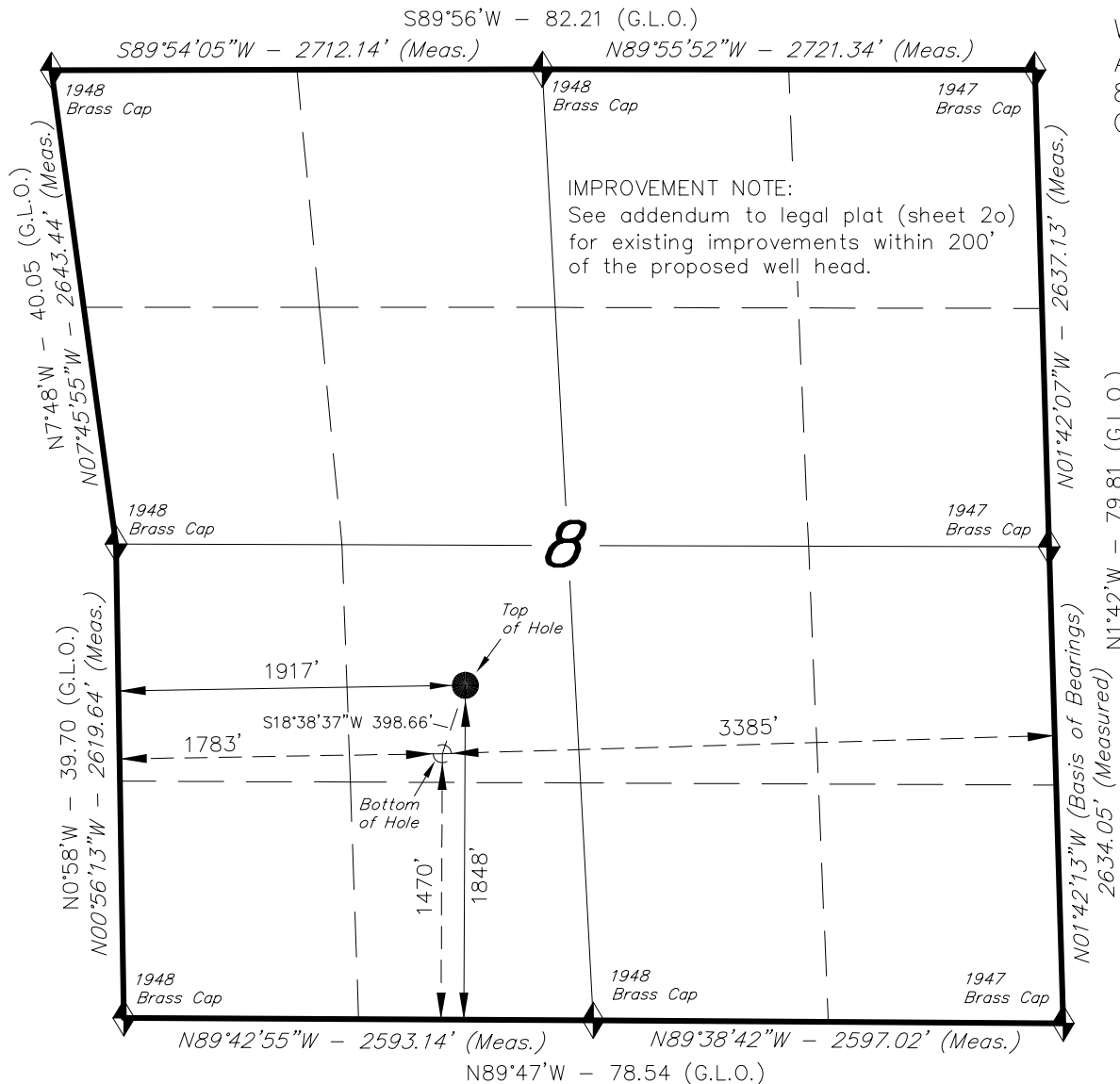
THIS IS TO CERTIFY THAT THE ABOVE PLAT WAS PREPARED FROM FIELD NOTES OF SURVEYS MADE BY ME OR UNDER MY SUPERVISION, AND THAT THE SAME ARE TRUE AND CORRECT TO THE BEST OF MY KNOWLEDGE AND BELIEF.

Stacy Stewart
30125
REGISTERED LAND SURVEYOR
REGISTRATION No. 30125
STATE OF COLORADO

TRI STATE LAND SURVEYING & CONSULTING

180 NORTH VERNAL AVE. - VERNAL, UTAH 84078
(435) 781-2501

DATE SURVEYED: 09-29-09	SURVEYED BY: D.S.	SHEET 2n OF 11
DATE DRAWN: 10-08-09	DRAWN BY: M.W.	
REVISED: 10-27-09 F.T.M.	SCALE: 1" = 1000'	



◆ = SECTION CORNERS LOCATED

Basis of elevation is the Rifle 2
Triangulation Station. 39°31'53.80" N Lat.
& 107°47'07.78" W Long. (NAD 83).
Elevation = 5323.1' (NAVD88).

NAD 83 (SURFACE LOCATION)

LATITUDE = 39°27'28.43"
(39.457896)
LONGITUDE = 107°47'59.72"
(107.799921)