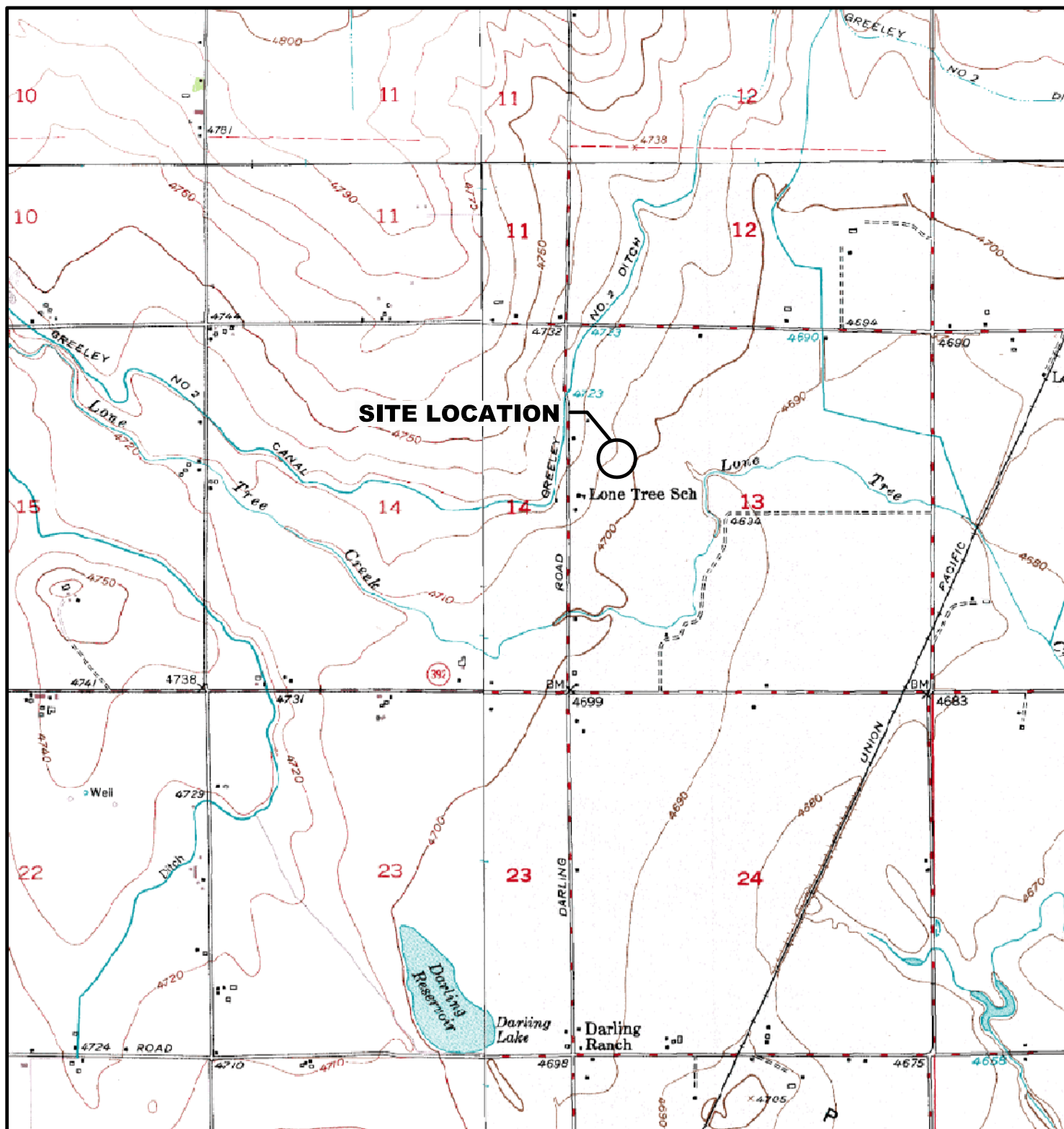


TABLE 1
GROUNDWATER ANALYTICAL AND FIELD RESULTS
ANDERSON 12-13 (API No. 123-20671)
WELD COUNTY
PETROLEUM DEVELOPMENT CORPORATION

SAMPLE ID	DATE	Benzene (ug/L)	Toluene (ug/L)	Ethyl- benzene (ug/L)	Xylenes (ug/L)	Depth to Water (ft btoc)
GW01	09/04/2008	1500	210	1.8	420	NM
GW02	09/04/2008	<1.0	<1.0	<1.0	<1.0	NM
GW03	09/08/2008	42	12	3.0	65	NM
MW01	09/25/2008	700	<1.0	<1.0	<1.0	5.39
	12/23/2008	<1.0	<1.0	<1.0	<1.0	6.23
	03/19/2009	<1.0	<1.0	<1.0	<1.0	6.96
	06/17/2009	1.1	<1.0	<1.0	<1.0	4.40
MW02	09/25/2008	<1.0	<1.0	<1.0	<1.0	6.15
	12/23/2008	<1.0	<1.0	<1.0	<1.0	6.40
	03/19/2009	<1.0	<1.0	<1.0	<1.0	6.99
	06/17/2009	<1.0	<1.0	<1.0	<1.0	4.95
MW03	09/25/2008	<1.0	<1.0	<1.0	1.1	6.25
	12/23/2008	<1.0	<1.0	<1.0	<1.0	6.35
	03/19/2009	<1.0	<1.0	<1.0	<1.0	7.03
	06/17/2009	<1.0	<1.0	<1.0	<1.0	5.03
MW04	09/25/2008	<1.0	<1.0	<1.0	<1.0	12.00
	12/23/2008	<1.0	<1.0	<1.0	<1.0	7.05
	03/19/2009	<1.0	<1.0	<1.0	<1.0	7.54
	06/17/2009	<1.0	<1.0	<1.0	<1.0	5.15
MW05	12/23/2008	<1.0	<1.0	<1.0	<1.0	5.85
	03/19/2009	<1.0	<1.0	<1.0	<1.0	7.02
	06/17/2009	<1.0	<1.0	<1.0	<1.0	4.49
MW06	12/23/2008	<1.0	<1.0	<1.0	<1.0	NM
	03/19/2009	<1.0	<1.0	<1.0	<1.0	7.01
	06/17/2009	<1.0	<1.0	<1.0	<1.0	5.26
Basic Standards for Groundwater:		5	560	700	1400	

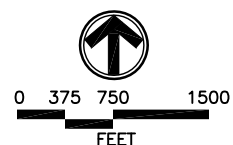
Notes: < - less than ug/L - micrograms per Liter NA - Not Analyzed/Not Available
ft btoc - feet below top of casing NM - Not measured API - American Petroleum Institute
Basic Standards for Groundwater are taken from the Colorado Department of Health and Environment (CDPHE) -
Water Quality Control Commission (WQCC) Regulation 41, May 2008
Bold numbers indicate result equalled or exceeded standard.





LEGEND

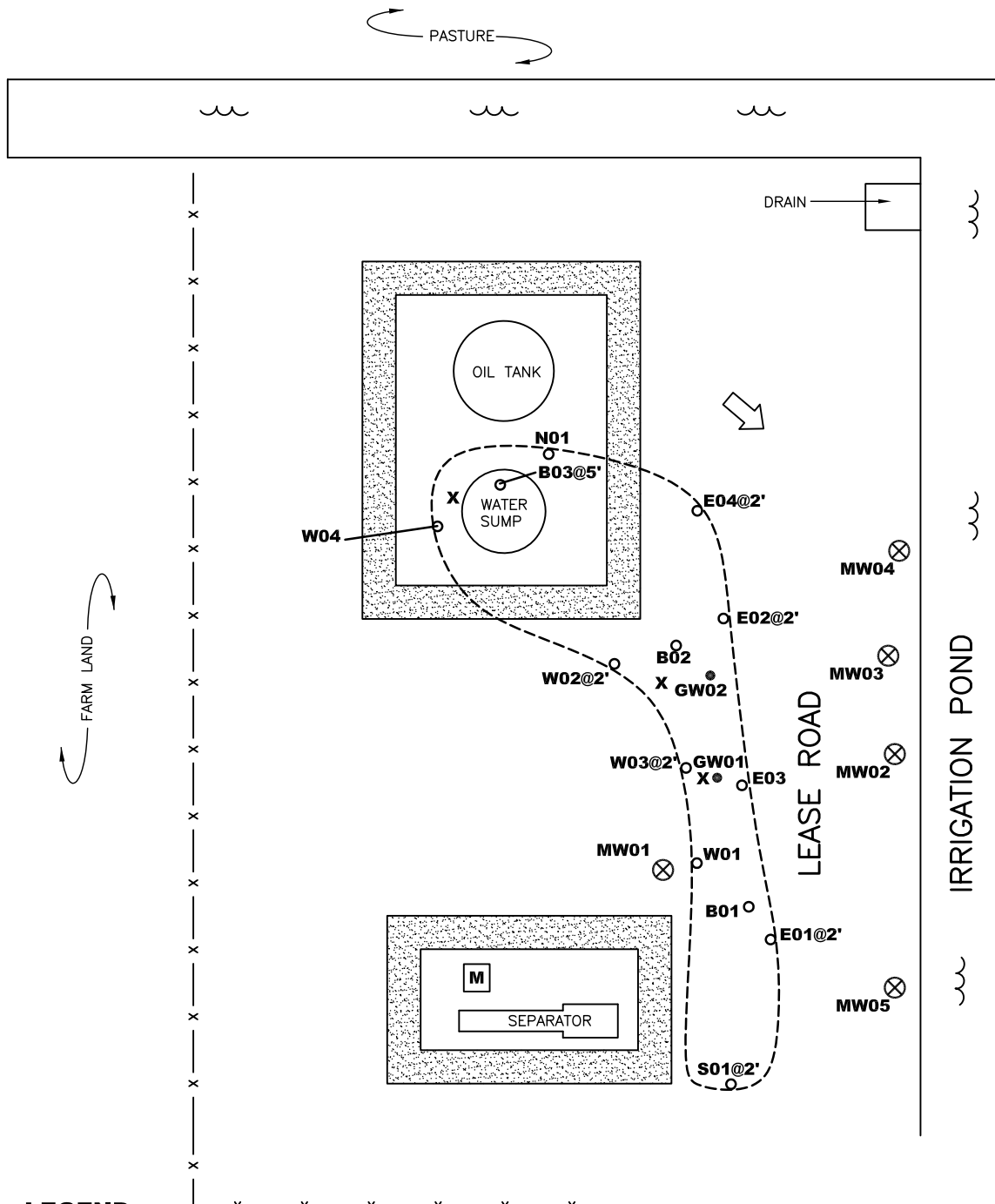
○ SITE LOCATION



SOURCE: TOPOZONE.COM
USGS 7.5" QUADRANGLE
(NAD27)

FIGURE 1
SITE LOCATION MAP
ANDERSON #12-13
SWNW 13 6N 65W
WELD COUNTY, CO
PETROLEUM DEVELOPMENT CORPORATION





LEGEND

- MW01 ⊗ MONITORING WELL LOCATION
- GW01 ● WATER SAMPLE LOCATION
- N01 ○ SOIL SAMPLE LOCATION
- M METER HOUSE
- BERM
- ~ CORrugATED STEEL FIREWALL
- x RELEASE LOCATION
- - - - - EXTENT OF EXCAVATION
- x - FENCE
- ➡ ESTIMATED GROUNDWATER FLOW DIRECTION

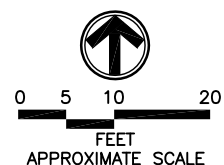


FIGURE 2
SITE MAP
 ANDERSON #12-13
 SWNW 13 6N 65W
 WELD COUNTY, CO
 PETROLEUM DEVELOPMENT CORPORATION



Summit Scientific

741 Corporate Circle – Suite I ♦ Golden, Colorado 80401

303.277.9310 - laboratory ♦ 303.277.9531 - fax

October 03, 2008

John Peterson
LT Environmental, Inc.
4600 West 60th Avenue
Arvada, CO 80003
RE: PDC - Anderson 12-13

Enclosed are the results of analyses for samples received by Summit Scientific on 09/25/08 17:30. If you have any questions concerning this report, please feel free to contact me.

Sincerely,

A handwritten signature in black ink, appearing to be 'PS' followed by a long, sweeping horizontal line.

Paul Shrewsbury For Ben Shrewsbury
Vice President / Laboratory Director



LT Environmental, Inc.
4600 West 60th Avenue
Arvada CO, 80003

Project: PDC - Anderson 12-13

Project Number: PDC 08158
Project Manager: John Peterson

Reported:
10/03/08 17:32

ANALYTICAL REPORT FOR SAMPLES

Sample ID	Laboratory ID	Matrix	Date Sampled	Date Received
MW01	R809142-01	Water	09/25/08 11:55	09/25/08 17:30
MW02	R809142-02	Water	09/25/08 12:10	09/25/08 17:30
MW03	R809142-03	Water	09/25/08 12:15	09/25/08 17:30
MW04	R809142-04	Water	09/25/08 12:35	09/25/08 17:30

Summit Scientific

The results in this report apply to the samples analyzed in accordance with the chain of custody document. This analytical report must be reproduced in its entirety.

LT Environmental, Inc.
4600 West 60th Avenue
Arvada CO, 80003

Project: PDC - Anderson 12-13

Project Number: PDC 08158
Project Manager: John Peterson

Reported:
10/03/08 17:32

Summit Scientific 2869142

741 Corporate Circle Suite I ♦ Golden, Colorado 80401
303-277-9310 ♦ 303-277-9531 Fax

Page / of

Client: LT Environmental, Inc.

Address: 4600 West 60th Avenue

City/State/Zip: Arvada, CO 80003

Phone: (303) 433-9788

Sampler Name: M. Hersh

[illegible]

Project Manager: John Peterson

E-Mail: jpeterston@ltenv.com

Project Name: Anderson 12-13

Project Number: PDC03/58

.....

[illegible]

www.s2scientific.com

Summit Scientific

The results in this report apply to the samples analyzed in accordance with the chain of custody document. This analytical report must be reproduced in its entirety.



LT Environmental, Inc.
4600 West 60th Avenue
Arvada CO, 80003

Project: PDC - Anderson 12-13

Project Number: PDC 08158
Project Manager: John Peterson

Reported:
10/03/08 17:32

MW01
R809142-01 (Water)

Summit Scientific

Volatile Organic Compounds by EPA Method 8260B

Date Sampled: 09/25/08 11:55

Analyte	Result	Reporting Limit	Units	Dilution	Batch	Prepared	Analyzed	Method	Notes
Benzene	700	10	ug/l	10	8093002	09/30/08	09/30/08	EPA 8260B	
Toluene	ND	1.0	"	1	"	"	"	"	
Ethylbenzene	ND	1.0	"	"	"	"	"	"	
Xylenes (total)	ND	1.0	"	"	"	"	"	"	

Date Sampled: 09/25/08 11:55

Analyte	Result	Reporting Limit	Units	Dilution	Batch	Prepared	Analyzed	Method	Notes
Surrogate: 1,2-Dichloroethane-d4		97.7 %	77.3-121		"	"	"	"	
Surrogate: Toluene-d8		102 %	91.4-107		"	"	"	"	
Surrogate: 4-Bromofluorobenzene		101 %	85.3-109		"	"	"	"	

Summit Scientific

The results in this report apply to the samples analyzed in accordance with the chain of custody document. This analytical report must be reproduced in its entirety.



LT Environmental, Inc.
4600 West 60th Avenue
Arvada CO, 80003

Project: PDC - Anderson 12-13

Project Number: PDC 08158
Project Manager: John Peterson

Reported:
10/03/08 17:32

MW02
R809142-02 (Water)

Summit Scientific

Volatile Organic Compounds by EPA Method 8260B

Date Sampled: **09/25/08 12:10**

Analyte	Result	Reporting	Units	Dilution	Batch	Prepared	Analyzed	Method	Notes
		Limit							
Benzene	ND	1.0	ug/l	1	8093002	09/30/08	10/01/08	EPA 8260B	
Toluene	ND	1.0	"	"	"	"	"	"	
Ethylbenzene	ND	1.0	"	"	"	"	"	"	
Xylenes (total)	ND	1.0	"	"	"	"	"	"	

Date Sampled: **09/25/08 12:10**

Analyte	Result	Reporting	Units	Dilution	Batch	Prepared	Analyzed	Method	Notes
		Limit							
Surrogate: 1,2-Dichloroethane-d4		87.2 %	77.3-121		"	"	"	"	
Surrogate: Toluene-d8		98.5 %	91.4-107		"	"	"	"	
Surrogate: 4-Bromofluorobenzene		97.0 %	85.3-109		"	"	"	"	

Summit Scientific

The results in this report apply to the samples analyzed in accordance with the chain of custody document. This analytical report must be reproduced in its entirety.



LT Environmental, Inc.
4600 West 60th Avenue
Arvada CO, 80003

Project: PDC - Anderson 12-13

Project Number: PDC 08158
Project Manager: John Peterson

Reported:
10/03/08 17:32

MW03
R809142-03 (Water)

Summit Scientific

Volatile Organic Compounds by EPA Method 8260B

Date Sampled: **09/25/08 12:15**

Analyte	Result	Reporting		Units	Dilution	Batch	Prepared	Analyzed	Method	Notes
		Limit								
Benzene	ND	1.0		ug/l	1	8093002	09/30/08	10/01/08	EPA 8260B	
Toluene	ND	1.0		"	"	"	"	"	"	
Ethylbenzene	ND	1.0		"	"	"	"	"	"	
Xylenes (total)	1.1	1.0		"	"	"	"	"	"	

Date Sampled: **09/25/08 12:15**

Analyte	Result	Reporting		Units	Dilution	Batch	Prepared	Analyzed	Method	Notes
		Limit								
Surrogate: 1,2-Dichloroethane-d4		94.0 %		77.3-121		"	"	"	"	
Surrogate: Toluene-d8		98.5 %		91.4-107		"	"	"	"	
Surrogate: 4-Bromofluorobenzene		98.5 %		85.3-109		"	"	"	"	

Summit Scientific

The results in this report apply to the samples analyzed in accordance with the chain of custody document. This analytical report must be reproduced in its entirety.



LT Environmental, Inc.
4600 West 60th Avenue
Arvada CO, 80003

Project: PDC - Anderson 12-13

Project Number: PDC 08158
Project Manager: John Peterson

Reported:
10/03/08 17:32

MW04
R809142-04 (Water)

Summit Scientific

Volatile Organic Compounds by EPA Method 8260B

Date Sampled: **09/25/08 12:35**

Analyte	Result	Reporting		Units	Dilution	Batch	Prepared	Analyzed	Method	Notes
		Limit								
Benzene	ND	1.0		ug/l	1	8093002	09/30/08	10/01/08	EPA 8260B	
Toluene	ND	1.0		"	"	"	"	"	"	
Ethylbenzene	ND	1.0		"	"	"	"	"	"	
Xylenes (total)	ND	1.0		"	"	"	"	"	"	

Date Sampled: **09/25/08 12:35**

Analyte	Result	Reporting		Units	Dilution	Batch	Prepared	Analyzed	Method	Notes
		Limit								
Surrogate: 1,2-Dichloroethane-d4		92.5 %		77.3-121		"	"	"	"	
Surrogate: Toluene-d8		99.2 %		91.4-107		"	"	"	"	
Surrogate: 4-Bromofluorobenzene		99.2 %		85.3-109		"	"	"	"	

Summit Scientific

The results in this report apply to the samples analyzed in accordance with the chain of custody document. This analytical report must be reproduced in its entirety.



LT Environmental, Inc.
4600 West 60th Avenue
Arvada CO, 80003

Project: PDC - Anderson 12-13

Project Number: PDC 08158
Project Manager: John Peterson

Reported:
10/03/08 17:32

Volatile Organic Compounds by EPA Method 8260B - Quality Control

Summit Scientific

Analyte	Reporting			Spike	Source		%REC		RPD	
	Result	Limit	Units	Level	Result	%REC	Limits	RPD	Limit	Notes

Batch 8093002 - EPA 5030 Water MS

Blank (8093002-BLK1)

Prepared & Analyzed: 09/30/08

Benzene	ND	1.0	ug/l							
Toluene	ND	1.0	"							
Ethylbenzene	ND	1.0	"							
Xylenes (total)	ND	1.0	"							
Surrogate: 1,2-Dichloroethane-d4	12.2		"	13.3	91.7	77.3-121				
Surrogate: Toluene-d8	13.2		"	13.3	99.2	91.4-107				
Surrogate: 4-Bromofluorobenzene	13.1		"	13.3	98.5	85.3-109				

LCS (8093002-BS1)

Prepared & Analyzed: 09/30/08

Benzene	30.4	1.0	ug/l	33.3	91.3	70-114				
Toluene	30.9	1.0	"	33.3	92.8	72.7-116				
Surrogate: 1,2-Dichloroethane-d4	12.4		"	13.3	93.2	77.3-121				
Surrogate: Toluene-d8	13.1		"	13.3	98.5	91.4-107				
Surrogate: 4-Bromofluorobenzene	13.0		"	13.3	97.7	85.3-109				

LCS Dup (8093002-BSD1)

Prepared & Analyzed: 09/30/08

Benzene	29.9	1.0	ug/l	33.3	89.8	70-114	1.66	8.14		
Toluene	30.6	1.0	"	33.3	91.9	72.7-116	0.976	7.88		
Surrogate: 1,2-Dichloroethane-d4	12.4		"	13.3	93.2	77.3-121				
Surrogate: Toluene-d8	13.1		"	13.3	98.5	91.4-107				
Surrogate: 4-Bromofluorobenzene	13.3		"	13.3	100	85.3-109				

Matrix Spike (8093002-MS1)

Source: R809155-01

Prepared & Analyzed: 09/30/08

Benzene	29.6	1.0	ug/l	33.3	ND	88.9	66.8-117			
Toluene	30.5	1.0	"	33.3	ND	91.6	71.5-117			
Surrogate: 1,2-Dichloroethane-d4	12.9		"	13.3		97.0	77.3-121			
Surrogate: Toluene-d8	13.0		"	13.3		97.7	91.4-107			
Surrogate: 4-Bromofluorobenzene	13.2		"	13.3		99.2	85.3-109			

Summit Scientific

The results in this report apply to the samples analyzed in accordance with the chain of custody document. This analytical report must be reproduced in its entirety.



LT Environmental, Inc.
4600 West 60th Avenue
Arvada CO, 80003

Project: PDC - Anderson 12-13

Project Number: PDC 08158
Project Manager: John Peterson

Reported:
10/03/08 17:32

Volatile Organic Compounds by EPA Method 8260B - Quality Control
Summit Scientific

Analyte	Reporting			Spike	Source		%REC		RPD	
	Result	Limit	Units	Level	Result	%REC	Limits	RPD	Limit	Notes

Batch 8093002 - EPA 5030 Water MS

Matrix Spike Dup (8093002-MSD1)		Source: R809155-01			Prepared & Analyzed: 09/30/08					
Benzene	28.4	1.0	ug/l	33.3	ND	85.3	66.8-117	4.14	17.8	
Toluene	28.8	1.0	"	33.3	ND	86.5	71.5-117	5.73	14.4	
Surrogate: 1,2-Dichloroethane-d4	14.1		"	13.3		106	77.3-121			
Surrogate: Toluene-d8	13.1		"	13.3		98.5	91.4-107			
Surrogate: 4-Bromofluorobenzene	13.5		"	13.3		102	85.3-109			

Summit Scientific

The results in this report apply to the samples analyzed in accordance with the chain of custody document. This analytical report must be reproduced in its entirety.



LT Environmental, Inc.
4600 West 60th Avenue
Arvada CO, 80003

Project: PDC - Anderson 12-13

Project Number: PDC 08158
Project Manager: John Peterson

Reported:
10/03/08 17:32

Notes and Definitions

DET Analyte DETECTED
ND Analyte NOT DETECTED at or above the reporting limit
NR Not Reported
dry Sample results reported on a dry weight basis
RPD Relative Percent Difference

Summit Scientific

A handwritten signature in black ink, appearing to be 'JM' followed by a long horizontal stroke.

The results in this report apply to the samples analyzed in accordance with the chain of custody document. This analytical report must be reproduced in its entirety.

Summit Scientific

741 Corporate Circle – Suite I ♦ Golden, Colorado 80401

303.277.9310 - laboratory ♦ 303.277.9531 - fax

November 19, 2008

John Peterson
LT Environmental, Inc.
4600 West 60th Avenue
Arvada, CO 80003
RE: PDC - Anderson 12-13

Enclosed are the results of analyses for samples received by Summit Scientific on 11/12/08 17:00. If you have any questions concerning this report, please feel free to contact me.

Sincerely,

A handwritten signature in black ink, appearing to be 'PS' followed by a long, sweeping horizontal line.

Paul Shrewsbury For Ben Shrewsbury
Vice President / Laboratory Director



LT Environmental, Inc.
4600 West 60th Avenue
Arvada CO, 80003

Project: PDC - Anderson 12-13

Project Number: PDC 08158
Project Manager: John Peterson

Reported:
11/19/08 11:04

ANALYTICAL REPORT FOR SAMPLES

Sample ID	Laboratory ID	Matrix	Date Sampled	Date Received
MW05	R811082-01	Water	11/11/08 12:18	11/12/08 17:00
MW06	R811082-02	Water	11/11/08 12:40	11/12/08 17:00

Summit Scientific

A handwritten signature in black ink, appearing to be 'JM'.

The results in this report apply to the samples analyzed in accordance with the chain of custody document. This analytical report must be reproduced in its entirety.



LT Environmental, Inc.
4600 West 60th Avenue
Arvada CO, 80003

Project: PDC - Anderson 12-13

Project Number: PDC 08158
Project Manager: John Peterson

Reported:
11/19/08 11:04

MW05
R811082-01 (Water)

Summit Scientific

Volatile Organic Compounds by EPA Method 8260B

Date Sampled: 11/11/08 12:18

Analyte	Result	Reporting		Units	Dilution	Batch	Prepared	Analyzed	Method	Notes
		Limit								
Benzene	ND	1.0		ug/l	1	8111803	11/18/08	11/19/08	EPA 8260B	
Toluene	ND	1.0		"	"	"	"	"	"	
Ethylbenzene	ND	1.0		"	"	"	"	"	"	
Xylenes (total)	ND	1.0		"	"	"	"	"	"	

Date Sampled: 11/11/08 12:18

Analyte	Result	Reporting		Units	Dilution	Batch	Prepared	Analyzed	Method	Notes
		Limit								
Surrogate: 1,2-Dichloroethane-d4		96.2 %		77.3-121		"	"	"	"	
Surrogate: Toluene-d8		104 %		91.4-107		"	"	"	"	
Surrogate: 4-Bromofluorobenzene		105 %		85.3-109		"	"	"	"	

Summit Scientific

The results in this report apply to the samples analyzed in accordance with the chain of custody document. This analytical report must be reproduced in its entirety.



LT Environmental, Inc.
4600 West 60th Avenue
Arvada CO, 80003

Project: PDC - Anderson 12-13

Project Number: PDC 08158
Project Manager: John Peterson

Reported:
11/19/08 11:04

MW06
R811082-02 (Water)

Summit Scientific

Volatile Organic Compounds by EPA Method 8260B

Date Sampled: 11/11/08 12:40

Analyte	Result	Reporting		Units	Dilution	Batch	Prepared	Analyzed	Method	Notes
		Limit								
Benzene	ND	1.0		ug/l	1	8111803	11/18/08	11/19/08	EPA 8260B	
Toluene	ND	1.0		"	"	"	"	"	"	
Ethylbenzene	ND	1.0		"	"	"	"	"	"	
Xylenes (total)	ND	1.0		"	"	"	"	"	"	

Date Sampled: 11/11/08 12:40

Analyte	Result	Reporting		Units	Dilution	Batch	Prepared	Analyzed	Method	Notes
		Limit								
Surrogate: 1,2-Dichloroethane-d4		94.0 %		77.3-121		"	"	"	"	
Surrogate: Toluene-d8		105 %		91.4-107		"	"	"	"	
Surrogate: 4-Bromofluorobenzene		107 %		85.3-109		"	"	"	"	

Summit Scientific

The results in this report apply to the samples analyzed in accordance with the chain of custody document. This analytical report must be reproduced in its entirety.



LT Environmental, Inc.
4600 West 60th Avenue
Arvada CO, 80003

Project: PDC - Anderson 12-13

Project Number: PDC 08158
Project Manager: John Peterson

Reported:
11/19/08 11:04

Volatile Organic Compounds by EPA Method 8260B - Quality Control

Summit Scientific

Analyte	Reporting			Spike	Source		%REC		RPD	
	Result	Limit	Units	Level	Result	%REC	Limits	RPD	Limit	Notes

Batch 8111803 - EPA 5030 Water MS

Blank (8111803-BLK1)

Prepared: 11/18/08 Analyzed: 11/19/08

Benzene	ND	1.0	ug/l							
Toluene	ND	1.0	"							
Ethylbenzene	ND	1.0	"							
Xylenes (total)	ND	1.0	"							
Surrogate: 1,2-Dichloroethane-d4	11.6		"	13.3	87.2	77.3-121				
Surrogate: Toluene-d8	13.4		"	13.3	101	91.4-107				
Surrogate: 4-Bromofluorobenzene	13.8		"	13.3	104	85.3-109				

LCS (8111803-BS1)

Prepared: 11/18/08 Analyzed: 11/19/08

Benzene	29.5	1.0	ug/l	33.3	88.6	70-114				
Toluene	28.4	1.0	"	33.3	85.3	72.7-116				
Surrogate: 1,2-Dichloroethane-d4	12.3		"	13.3	92.5	77.3-121				
Surrogate: Toluene-d8	13.7		"	13.3	103	91.4-107				
Surrogate: 4-Bromofluorobenzene	13.8		"	13.3	104	85.3-109				

LCS Dup (8111803-BSD1)

Prepared: 11/18/08 Analyzed: 11/19/08

Benzene	29.6	1.0	ug/l	33.3	88.9	70-114	0.338	8.14		
Toluene	28.9	1.0	"	33.3	86.8	72.7-116	1.75	7.88		
Surrogate: 1,2-Dichloroethane-d4	12.5		"	13.3	94.0	77.3-121				
Surrogate: Toluene-d8	13.6		"	13.3	102	91.4-107				
Surrogate: 4-Bromofluorobenzene	13.8		"	13.3	104	85.3-109				

Matrix Spike (8111803-MS1)

Source: R811072-01

Prepared: 11/18/08 Analyzed: 11/19/08

Benzene	30.1	1.0	ug/l	33.3	ND	90.4	66.8-117			
Toluene	28.8	1.0	"	33.3	ND	86.5	71.5-117			
Surrogate: 1,2-Dichloroethane-d4	12.5		"	13.3		94.0	77.3-121			
Surrogate: Toluene-d8	13.5		"	13.3		102	91.4-107			
Surrogate: 4-Bromofluorobenzene	13.8		"	13.3		104	85.3-109			

Summit Scientific

The results in this report apply to the samples analyzed in accordance with the chain of custody document. This analytical report must be reproduced in its entirety.



LT Environmental, Inc.
4600 West 60th Avenue
Arvada CO, 80003

Project: PDC - Anderson 12-13

Project Number: PDC 08158
Project Manager: John Peterson

Reported:
11/19/08 11:04

Volatile Organic Compounds by EPA Method 8260B - Quality Control
Summit Scientific

Analyte	Reporting			Spike	Source		%REC		RPD	
	Result	Limit	Units	Level	Result	%REC	Limits	RPD	Limit	Notes

Batch 8111803 - EPA 5030 Water MS

Matrix Spike Dup (8111803-MSD1)				Source: R811072-01		Prepared: 11/18/08		Analyzed: 11/19/08		
Benzene	30.3	1.0	ug/l	33.3	ND	91.0	66.8-117	0.662	17.8	
Toluene	28.6	1.0	"	33.3	ND	85.9	71.5-117	0.697	14.4	
Surrogate: 1,2-Dichloroethane-d4	14.1		"	13.3		106	77.3-121			
Surrogate: Toluene-d8	13.3		"	13.3		100	91.4-107			
Surrogate: 4-Bromofluorobenzene	13.9		"	13.3		105	85.3-109			

Summit Scientific

The results in this report apply to the samples analyzed in accordance with the chain of custody document. This analytical report must be reproduced in its entirety.



LT Environmental, Inc.
4600 West 60th Avenue
Arvada CO, 80003

Project: PDC - Anderson 12-13

Project Number: PDC 08158
Project Manager: John Peterson

Reported:
11/19/08 11:04

Notes and Definitions

DET Analyte DETECTED
ND Analyte NOT DETECTED at or above the reporting limit
NR Not Reported
dry Sample results reported on a dry weight basis
RPD Relative Percent Difference

Summit Scientific

A handwritten signature in black ink, appearing to be 'JM' followed by a long horizontal stroke.

The results in this report apply to the samples analyzed in accordance with the chain of custody document. This analytical report must be reproduced in its entirety.

Summit Scientific

741 Corporate Circle – Suite I ♦ Golden, Colorado 80401

303.277.9310 - laboratory ♦ 303.374.5933 - fax

February 11, 2009

John Peterson
LT Environmental, Inc.
4600 West 60th Avenue
Arvada, CO 80003
RE: PDC - Anderson 12-13

Enclosed are the results of analyses for samples received by Summit Scientific on 12/24/08 16:00. If you have any questions concerning this report, please feel free to contact me.

Sincerely,

A handwritten signature in black ink, appearing to be 'BS' with a long, sweeping horizontal line extending to the right.

Ben Shrewsbury
Vice President / Laboratory Director

LT Environmental, Inc.
4600 West 60th Avenue
Arvada CO, 80003

Project: PDC - Anderson 12-13
Project Number: PDC08158
Project Manager: John Peterson

Reported:
02/11/09 15:56

ANALYTICAL REPORT FOR SAMPLES

Sample ID	Laboratory ID	Matrix	Date Sampled	Date Received
MW01	R812151-01	Water	12/23/08 10:45	12/24/08 16:00
MW02	R812151-02	Water	12/23/08 11:15	12/24/08 16:00
MW03	R812151-03	Water	12/23/08 11:05	12/24/08 16:00
MW04	R812151-04	Water	12/23/08 10:55	12/24/08 16:00
MW05	R812151-05	Water	12/23/08 11:35	12/24/08 16:00
MW06	R812151-06	Water	12/23/08 11:25	12/24/08 16:00



LT Environmental, Inc.
4600 West 60th Avenue
Arvada CO, 80003

Project: PDC - Anderson 12-13

Project Number: PDC08158
Project Manager: John Peterson

Reported:
02/11/09 15:56

Summit Scientific
R802151

S₂
741 Corporate Circle Suite I ♦ Golden, Colorado 80401
303-277-9310 ♦ 303-277-9531 Fax

Client: LT Environmental, Inc.

Address: 4600 West 60th Avenue

City/State/Zip: Arvada, CO 80003

City/State/Zip: ALVADA, CO 80002
Phone: (303) 433-9788

Phone: (303) 433-9100

Sampler Name: Dea

Project Manager: John Peterson

E-Mail: jpeterston@itenv.com

Project Name: A-12-13

Project Name: ANALYSIS OF
Project Number: QNC AD 154

Project Number: A0608028

Page 1 of 1

[illegible]

www.s2scientific.com

LT Environmental, Inc.
4600 West 60th Avenue
Arvada CO, 80003

Project: PDC - Anderson 12-13

Project Number: PDC08158
Project Manager: John Peterson

Reported:
02/11/09 15:56

MW01
R812151-01 (Water)

Summit Scientific

Volatile Organic Compounds by EPA Method 8260B

Date Sampled: 12/23/08 10:45

Analyte	Result	Reporting Limit	Units	Dilution	Batch	Prepared	Analyzed	Method	Notes
Benzene	ND	1.0	ug/l	1	8122908	12/29/08	12/29/08	EPA 8260B	
Toluene	ND	1.0	"	"	"	"	12/29/08	"	
Ethylbenzene	ND	1.0	"	"	"	"	"	"	
Xylenes (total)	ND	1.0	"	"	"	"	12/29/08	"	

Date Sampled: 12/23/08 10:45

Analyte	Result	Reporting Limit	Units	Dilution	Batch	Prepared	Analyzed	Method	Notes
Surrogate: 1,2-Dichloroethane-d4		114 %	77.3-121		"	"	12/29/08	"	
Surrogate: Toluene-d8		101 %	91.4-107		"	"	"	"	
Surrogate: 4-Bromofluorobenzene		107 %	85.3-109		"	"	"	"	

Summit Scientific

The results in this report apply to the samples analyzed in accordance with the chain of custody document. This analytical report must be reproduced in its entirety.



LT Environmental, Inc.
4600 West 60th Avenue
Arvada CO, 80003

Project: PDC - Anderson 12-13

Project Number: PDC08158
Project Manager: John Peterson

Reported:
02/11/09 15:56

MW02
R812151-02 (Water)

Summit Scientific

Volatile Organic Compounds by EPA Method 8260B

Date Sampled: 12/23/08 11:15

Analyte	Result	Reporting Limit	Units	Dilution	Batch	Prepared	Analyzed	Method	Notes
Benzene	ND	1.0	ug/l	1	8122908	12/29/08	12/29/08	EPA 8260B	
Toluene	ND	1.0	"	"	"	"	"	"	
Ethylbenzene	ND	1.0	"	"	"	"	"	"	
Xylenes (total)	ND	1.0	"	"	"	"	"	"	

Date Sampled: 12/23/08 11:15

Analyte	Result	Reporting Limit	Units	Dilution	Batch	Prepared	Analyzed	Method	Notes
Surrogate: 1,2-Dichloroethane-d4		115 %	77.3-121		"	"	"	"	
Surrogate: Toluene-d8		102 %	91.4-107		"	"	"	"	
Surrogate: 4-Bromofluorobenzene		106 %	85.3-109		"	"	"	"	

Summit Scientific

The results in this report apply to the samples analyzed in accordance with the chain of custody document. This analytical report must be reproduced in its entirety.



LT Environmental, Inc.
4600 West 60th Avenue
Arvada CO, 80003

Project: PDC - Anderson 12-13

Project Number: PDC08158
Project Manager: John Peterson

Reported:
02/11/09 15:56

MW03
R812151-03 (Water)

Summit Scientific

Volatile Organic Compounds by EPA Method 8260B

Date Sampled: 12/23/08 11:05

Analyte	Result	Reporting Limit	Units	Dilution	Batch	Prepared	Analyzed	Method	Notes
Benzene	ND	1.0	ug/l	1	8122908	12/29/08	12/29/08	EPA 8260B	
Toluene	ND	1.0	"	"	"	"	"	"	
Ethylbenzene	ND	1.0	"	"	"	"	"	"	
Xylenes (total)	ND	1.0	"	"	"	"	"	"	

Date Sampled: 12/23/08 11:05

Analyte	Result	Reporting Limit	Units	Dilution	Batch	Prepared	Analyzed	Method	Notes
Surrogate: 1,2-Dichloroethane-d4		116 %	77.3-121		"	"	"	"	
Surrogate: Toluene-d8		102 %	91.4-107		"	"	"	"	
Surrogate: 4-Bromofluorobenzene		105 %	85.3-109		"	"	"	"	

Summit Scientific

The results in this report apply to the samples analyzed in accordance with the chain of custody document. This analytical report must be reproduced in its entirety.



LT Environmental, Inc.
4600 West 60th Avenue
Arvada CO, 80003

Project: PDC - Anderson 12-13

Project Number: PDC08158
Project Manager: John Peterson

Reported:
02/11/09 15:56

MW04
R812151-04 (Water)

Summit Scientific

Volatile Organic Compounds by EPA Method 8260B

Date Sampled: **12/23/08 10:55**

Analyte	Result	Reporting Limit	Units	Dilution	Batch	Prepared	Analyzed	Method	Notes
Benzene	ND	1.0	ug/l	1	8122908	12/29/08	12/30/08	EPA 8260B	
Toluene	ND	1.0	"	"	"	"	"	"	
Ethylbenzene	ND	1.0	"	"	"	"	"	"	
Xylenes (total)	ND	1.0	"	"	"	"	"	"	

Date Sampled: **12/23/08 10:55**

Analyte	Result	Reporting Limit	Units	Dilution	Batch	Prepared	Analyzed	Method	Notes
Surrogate: 1,2-Dichloroethane-d4		115 %	77.3-121		"	"	"	"	
Surrogate: Toluene-d8		100 %	91.4-107		"	"	"	"	
Surrogate: 4-Bromofluorobenzene		104 %	85.3-109		"	"	"	"	

Summit Scientific

The results in this report apply to the samples analyzed in accordance with the chain of custody document. This analytical report must be reproduced in its entirety.



LT Environmental, Inc.
4600 West 60th Avenue
Arvada CO, 80003

Project: PDC - Anderson 12-13

Project Number: PDC08158
Project Manager: John Peterson

Reported:
02/11/09 15:56

MW05
R812151-05 (Water)

Summit Scientific

Volatile Organic Compounds by EPA Method 8260B

Date Sampled: 12/23/08 11:35

Analyte	Result	Reporting Limit	Units	Dilution	Batch	Prepared	Analyzed	Method	Notes
Benzene	ND	1.0	ug/l	1	8122908	12/29/08	12/30/08	EPA 8260B	
Toluene	ND	1.0	"	"	"	"	"	"	
Ethylbenzene	ND	1.0	"	"	"	"	"	"	
Xylenes (total)	ND	1.0	"	"	"	"	"	"	

Date Sampled: 12/23/08 11:35

Analyte	Result	Reporting Limit	Units	Dilution	Batch	Prepared	Analyzed	Method	Notes
Surrogate: 1,2-Dichloroethane-d4		112 %	77.3-121		"	"	"	"	
Surrogate: Toluene-d8		102 %	91.4-107		"	"	"	"	
Surrogate: 4-Bromofluorobenzene		108 %	85.3-109		"	"	"	"	

Summit Scientific

The results in this report apply to the samples analyzed in accordance with the chain of custody document. This analytical report must be reproduced in its entirety.



LT Environmental, Inc.
4600 West 60th Avenue
Arvada CO, 80003

Project: PDC - Anderson 12-13

Project Number: PDC08158
Project Manager: John Peterson

Reported:
02/11/09 15:56

MW06
R812151-06 (Water)

Summit Scientific

Volatile Organic Compounds by EPA Method 8260B

Date Sampled: 12/23/08 11:25

Analyte	Result	Reporting Limit	Units	Dilution	Batch	Prepared	Analyzed	Method	Notes
Benzene	ND	1.0	ug/l	1	8122908	12/29/08	12/30/08	EPA 8260B	
Toluene	ND	1.0	"	"	"	"	"	"	
Ethylbenzene	ND	1.0	"	"	"	"	"	"	
Xylenes (total)	ND	1.0	"	"	"	"	"	"	

Date Sampled: 12/23/08 11:25

Analyte	Result	Reporting Limit	Units	Dilution	Batch	Prepared	Analyzed	Method	Notes
Surrogate: 1,2-Dichloroethane-d4		117 %	77.3-121		"	"	"	"	
Surrogate: Toluene-d8		102 %	91.4-107		"	"	"	"	
Surrogate: 4-Bromofluorobenzene		108 %	85.3-109		"	"	"	"	

Summit Scientific

The results in this report apply to the samples analyzed in accordance with the chain of custody document. This analytical report must be reproduced in its entirety.



LT Environmental, Inc.
4600 West 60th Avenue
Arvada CO, 80003

Project: PDC - Anderson 12-13

Project Number: PDC08158
Project Manager: John Peterson

Reported:
02/11/09 15:56

Volatile Organic Compounds by EPA Method 8260B - Quality Control

Summit Scientific

Analyte	Reporting			Spike	Source		%REC		RPD	
	Result	Limit	Units	Level	Result	%REC	Limits	RPD	Limit	Notes

Batch 8122908 - EPA 5030 Water MS

Blank (8122908-BLK1)

Prepared & Analyzed: 12/29/08

Benzene	ND	1.0	ug/l							
Toluene	ND	1.0	"							
Ethylbenzene	ND	1.0	"							
Xylenes (total)	ND	1.0	"							
Surrogate: 1,2-Dichloroethane-d4	15.3		"	13.3	115	77.3-121				
Surrogate: Toluene-d8	13.1		"	13.3	98.5	91.4-107				
Surrogate: 4-Bromofluorobenzene	14.4		"	13.3	108	85.3-109				

LCS (8122908-BS1)

Prepared & Analyzed: 12/29/08

Benzene	28.3	1.0	ug/l	33.3	85.0	70-114				
Toluene	26.3	1.0	"	33.3	79.0	72.7-116				
Surrogate: 1,2-Dichloroethane-d4	15.6		"	13.3	117	77.3-121				
Surrogate: Toluene-d8	13.6		"	13.3	102	91.4-107				
Surrogate: 4-Bromofluorobenzene	14.5		"	13.3	109	85.3-109				

LCS Dup (8122908-BSD1)

Prepared & Analyzed: 12/29/08

Benzene	29.6	1.0	ug/l	33.3	88.9	70-114	4.49	8.14		
Toluene	27.8	1.0	"	33.3	83.5	72.7-116	5.55	7.88		
Surrogate: 1,2-Dichloroethane-d4	15.8		"	13.3	119	77.3-121				
Surrogate: Toluene-d8	13.8		"	13.3	104	91.4-107				
Surrogate: 4-Bromofluorobenzene	14.5		"	13.3	109	85.3-109				

Matrix Spike (8122908-MS1)

Source: R812151-02

Prepared & Analyzed: 12/29/08

Benzene	29.0	1.0	ug/l	33.3	ND	87.1	66.8-117			
Toluene	26.7	1.0	"	33.3	ND	80.2	71.5-117			
Surrogate: 1,2-Dichloroethane-d4	14.3		"	13.3		108	77.3-121			
Surrogate: Toluene-d8	13.6		"	13.3		102	91.4-107			
Surrogate: 4-Bromofluorobenzene	14.0		"	13.3		105	85.3-109			

Summit Scientific

The results in this report apply to the samples analyzed in accordance with the chain of custody document. This analytical report must be reproduced in its entirety.



LT Environmental, Inc.
4600 West 60th Avenue
Arvada CO, 80003

Project: PDC - Anderson 12-13

Project Number: PDC08158
Project Manager: John Peterson

Reported:
02/11/09 15:56

Volatile Organic Compounds by EPA Method 8260B - Quality Control
Summit Scientific

Analyte	Reporting			Spike	Source		%REC		RPD	
	Result	Limit	Units	Level	Result	%REC	Limits	RPD	Limit	Notes

Batch 8122908 - EPA 5030 Water MS

Matrix Spike Dup (8122908-MSD1)		Source: R812151-02			Prepared & Analyzed: 12/29/08					
Benzene	30.0	1.0	ug/l	33.3	ND	90.1	66.8-117	3.39	17.8	
Toluene	27.6	1.0	"	33.3	ND	82.9	71.5-117	3.31	14.4	
Surrogate: 1,2-Dichloroethane-d4	14.3		"	13.3		108	77.3-121			
Surrogate: Toluene-d8	13.9		"	13.3		105	91.4-107			
Surrogate: 4-Bromofluorobenzene	14.2		"	13.3		107	85.3-109			

Summit Scientific

The results in this report apply to the samples analyzed in accordance with the chain of custody document. This analytical report must be reproduced in its entirety.



LT Environmental, Inc.
4600 West 60th Avenue
Arvada CO, 80003

Project: PDC - Anderson 12-13

Project Number: PDC08158
Project Manager: John Peterson

Reported:
02/11/09 15:56

Notes and Definitions

DET Analyte DETECTED
ND Analyte NOT DETECTED at or above the reporting limit
NR Not Reported
dry Sample results reported on a dry weight basis
RPD Relative Percent Difference



Summit Scientific

741 Corporate Circle – Suite I ♦ Golden, Colorado 80401

303.277.9310 - laboratory ♦ 303.277.9531 - fax

March 25, 2009

John Peterson
LT Environmental, Inc.
4600 West 60th Avenue
Arvada, CO 80003
RE: PDC - Anderson 12-13

Enclosed are the results of analyses for samples received by Summit Scientific on 03/19/09 16:56. If you have any questions concerning this report, please feel free to contact me.

Sincerely,

A handwritten signature in black ink, appearing to be 'LS' followed by a long, sweeping horizontal line.

Logan Shrewsbury For Ben Shrewsbury
Vice President / Laboratory Director



LT Environmental, Inc.
4600 West 60th Avenue
Arvada CO, 80003

Project: PDC - Anderson 12-13

Project Number: PDC08158
Project Manager: John Peterson

Reported:
03/25/09 19:44

ANALYTICAL REPORT FOR SAMPLES

Sample ID	Laboratory ID	Matrix	Date Sampled	Date Received
MW01	R903093-01	Water	03/19/09 11:30	03/19/09 16:56
MW02	R903093-02	Water	03/19/09 11:40	03/19/09 16:56
MW03	R903093-03	Water	03/19/09 11:50	03/19/09 16:56
MW04	R903093-04	Water	03/19/09 12:00	03/19/09 16:56
MW05	R903093-05	Water	03/19/09 12:10	03/19/09 16:56
MW06	R903093-06	Water	03/19/09 12:20	03/19/09 16:56

Summit Scientific

The results in this report apply to the samples analyzed in accordance with the chain of custody document. This analytical report must be reproduced in its entirety.



LT Environmental, Inc.
4600 West 60th Avenue
Arvada CO, 80003

Project: PDC - Anderson 12-13

Project Number: PDC08158
Project Manager: John Peterson

Reported:
03/25/09 19:44

Summit Scientific R903093

S₂

741 Corporate Circle Suite 1 • Golden, Colorado 80401
303-277-9310 • 303-277-9531 Fax

Page 1 of 1

Client: LT Environmental, Inc.

Address: 4600 West 60th Avenue

City/State/Zip: Arvada, CO 80003

Phone: (303) 433-9788

Sampler Name: Philip Harris

Project Manager: John Peterson

E-Mail: jpeterson@ltenv.com

Fax: (303) 433-1432

Project Name: Anderson 12-13

Project Number: PDC08158

Sample Description	Date Sampled	Time Sampled	Number of Containers	Preservative				Matrix				Analyze For:				Special Instructions
				HCl	HNO ₃	None	Other (Specify)	Groundwater	Soil	Air - Canister Serial #	Other (Specify)	Total Carbon Chain	BTEX			
MW01	3/17/09	1130	2	X	X			X	X	X	X	X	X			
MW02		1140	2	X	X			X	X	X	X	X	X			
MW03		1150	2	X	X			X	X	X	X	X	X			
MW04		1200	2	X	X			X	X	X	X	X	X			
MW05		1210	2	X	X			X	X	X	X	X	X			
MW06		1220	2	X	X			X	X	X	X	X	X			
Relinquished by: JPH	Date/Time: 3/19/09	Received by: MS				Date/Time: 3/19/09	Turn Around Time (Check):				72 Hours <input checked="" type="checkbox"/> Standard <input type="checkbox"/>		Notes:			
Relinquished by:	Date/Time:	Received by:				Date/Time:	Sample Integrity:				Temperature Upon Receipt: 4.8		Intact: <input checked="" type="checkbox"/> No <input type="checkbox"/>			
Relinquished by:	Date/Time:	Received in Lab by:				Date/Time:										

www.s2scientific.com

Summit Scientific

The results in this report apply to the samples analyzed in accordance with the chain of custody document. This analytical report must be reproduced in its entirety.



LT Environmental, Inc.
4600 West 60th Avenue
Arvada CO, 80003

Project: PDC - Anderson 12-13

Project Number: PDC08158
Project Manager: John Peterson

Reported:
03/25/09 19:44

MW01
R903093-01 (Water)

Summit Scientific

Volatile Organic Compounds by EPA Method 8260B

Date Sampled: **03/19/09 11:30**

Analyte	Result	Reporting Limit	Units	Dilution	Batch	Prepared	Analyzed	Method	Notes
Benzene	ND	1.0	ug/l	1	9032401	03/24/09	03/25/09	EPA 8260B	
Toluene	ND	1.0	"	"	"	"	"	"	
Ethylbenzene	ND	1.0	"	"	"	"	"	"	
Xylenes (total)	ND	1.0	"	"	"	"	"	"	

Date Sampled: **03/19/09 11:30**

Analyte	Result	Reporting Limit	Units	Dilution	Batch	Prepared	Analyzed	Method	Notes
Surrogate: 1,2-Dichloroethane-d4		103 %	77.3-121		"	"	"	"	
Surrogate: Toluene-d8		98.5 %	91.4-107		"	"	"	"	
Surrogate: 4-Bromofluorobenzene		101 %	85.3-109		"	"	"	"	

Summit Scientific

The results in this report apply to the samples analyzed in accordance with the chain of custody document. This analytical report must be reproduced in its entirety.



LT Environmental, Inc.
4600 West 60th Avenue
Arvada CO, 80003

Project: PDC - Anderson 12-13

Project Number: PDC08158
Project Manager: John Peterson

Reported:
03/25/09 19:44

MW02
R903093-02 (Water)

Summit Scientific

Volatile Organic Compounds by EPA Method 8260B

Date Sampled: **03/19/09 11:40**

Analyte	Result	Reporting		Units	Dilution	Batch	Prepared	Analyzed	Method	Notes
		Limit								
Benzene	ND	1.0		ug/l	1	9032401	03/24/09	03/25/09	EPA 8260B	
Toluene	ND	1.0		"	"	"	"	"	"	
Ethylbenzene	ND	1.0		"	"	"	"	"	"	
Xylenes (total)	ND	1.0		"	"	"	"	"	"	

Date Sampled: **03/19/09 11:40**

Analyte	Result	Reporting		Units	Dilution	Batch	Prepared	Analyzed	Method	Notes
		Limit								
Surrogate: 1,2-Dichloroethane-d4		104 %		77.3-121		"	"	"	"	
Surrogate: Toluene-d8		97.7 %		91.4-107		"	"	"	"	
Surrogate: 4-Bromofluorobenzene		102 %		85.3-109		"	"	"	"	

Summit Scientific

The results in this report apply to the samples analyzed in accordance with the chain of custody document. This analytical report must be reproduced in its entirety.



LT Environmental, Inc.
4600 West 60th Avenue
Arvada CO, 80003

Project: PDC - Anderson 12-13

Project Number: PDC08158
Project Manager: John Peterson

Reported:
03/25/09 19:44

MW03
R903093-03 (Water)

Summit Scientific

Volatile Organic Compounds by EPA Method 8260B

Date Sampled: **03/19/09 11:50**

Analyte	Result	Reporting	Units	Dilution	Batch	Prepared	Analyzed	Method	Notes
		Limit							
Benzene	ND	1.0	ug/l	1	9032401	03/24/09	03/25/09	EPA 8260B	
Toluene	ND	1.0	"	"	"	"	"	"	
Ethylbenzene	ND	1.0	"	"	"	"	"	"	
Xylenes (total)	ND	1.0	"	"	"	"	"	"	

Date Sampled: **03/19/09 11:50**

Analyte	Result	Reporting	Units	Dilution	Batch	Prepared	Analyzed	Method	Notes
		Limit							
Surrogate: 1,2-Dichloroethane-d4		101 %	77.3-121		"	"	"	"	
Surrogate: Toluene-d8		97.7 %	91.4-107		"	"	"	"	
Surrogate: 4-Bromofluorobenzene		99.2 %	85.3-109		"	"	"	"	

Summit Scientific

The results in this report apply to the samples analyzed in accordance with the chain of custody document. This analytical report must be reproduced in its entirety.



LT Environmental, Inc.
4600 West 60th Avenue
Arvada CO, 80003

Project: PDC - Anderson 12-13
Project Number: PDC08158
Project Manager: John Peterson

Reported:
03/25/09 19:44

MW04
R903093-04 (Water)

Summit Scientific

Volatile Organic Compounds by EPA Method 8260B

Date Sampled: **03/19/09 12:00**

Analyte	Result	Reporting Limit	Units	Dilution	Batch	Prepared	Analyzed	Method	Notes
Benzene	ND	1.0	ug/l	1	9032401	03/24/09	03/25/09	EPA 8260B	
Toluene	ND	1.0	"	"	"	"	"	"	
Ethylbenzene	ND	1.0	"	"	"	"	"	"	
Xylenes (total)	ND	1.0	"	"	"	"	"	"	

Date Sampled: **03/19/09 12:00**

Analyte	Result	Reporting Limit	Units	Dilution	Batch	Prepared	Analyzed	Method	Notes
Surrogate: 1,2-Dichloroethane-d4		103 %	77.3-121		"	"	"	"	
Surrogate: Toluene-d8		99.2 %	91.4-107		"	"	"	"	
Surrogate: 4-Bromofluorobenzene		100 %	85.3-109		"	"	"	"	

Summit Scientific

The results in this report apply to the samples analyzed in accordance with the chain of custody document. This analytical report must be reproduced in its entirety.



LT Environmental, Inc.
4600 West 60th Avenue
Arvada CO, 80003

Project: PDC - Anderson 12-13

Project Number: PDC08158
Project Manager: John Peterson

Reported:
03/25/09 19:44

MW05
R903093-05 (Water)

Summit Scientific

Volatile Organic Compounds by EPA Method 8260B

Date Sampled: **03/19/09 12:10**

Analyte	Result	Reporting		Units	Dilution	Batch	Prepared	Analyzed	Method	Notes
		Limit								
Benzene	ND	1.0		ug/l	1	9032401	03/24/09	03/25/09	EPA 8260B	
Toluene	ND	1.0		"	"	"	"	"	"	
Ethylbenzene	ND	1.0		"	"	"	"	"	"	
Xylenes (total)	ND	1.0		"	"	"	"	"	"	

Date Sampled: **03/19/09 12:10**

Analyte	Result	Reporting		Units	Dilution	Batch	Prepared	Analyzed	Method	Notes
		Limit								
Surrogate: 1,2-Dichloroethane-d4		102 %		77.3-121		"	"	"	"	
Surrogate: Toluene-d8		98.5 %		91.4-107		"	"	"	"	
Surrogate: 4-Bromofluorobenzene		101 %		85.3-109		"	"	"	"	

Summit Scientific

The results in this report apply to the samples analyzed in accordance with the chain of custody document. This analytical report must be reproduced in its entirety.



LT Environmental, Inc.
4600 West 60th Avenue
Arvada CO, 80003

Project: PDC - Anderson 12-13

Project Number: PDC08158
Project Manager: John Peterson

Reported:
03/25/09 19:44

MW06
R903093-06 (Water)

Summit Scientific

Volatile Organic Compounds by EPA Method 8260B

Date Sampled: **03/19/09 12:20**

Analyte	Result	Reporting	Units	Dilution	Batch	Prepared	Analyzed	Method	Notes
		Limit							
Benzene	ND	1.0	ug/l	1	9032401	03/24/09	03/25/09	EPA 8260B	
Toluene	ND	1.0	"	"	"	"	"	"	
Ethylbenzene	ND	1.0	"	"	"	"	"	"	
Xylenes (total)	ND	1.0	"	"	"	"	"	"	

Date Sampled: **03/19/09 12:20**

Analyte	Result	Reporting	Units	Dilution	Batch	Prepared	Analyzed	Method	Notes
		Limit							
Surrogate: 1,2-Dichloroethane-d4		102 %	77.3-121		"	"	"	"	
Surrogate: Toluene-d8		97.0 %	91.4-107		"	"	"	"	
Surrogate: 4-Bromofluorobenzene		99.2 %	85.3-109		"	"	"	"	

Summit Scientific

The results in this report apply to the samples analyzed in accordance with the chain of custody document. This analytical report must be reproduced in its entirety.



LT Environmental, Inc.
4600 West 60th Avenue
Arvada CO, 80003

Project: PDC - Anderson 12-13

Project Number: PDC08158
Project Manager: John Peterson

Reported:
03/25/09 19:44

Volatile Organic Compounds by EPA Method 8260B - Quality Control

Summit Scientific

Analyte	Reporting			Spike	Source		%REC		RPD	
	Result	Limit	Units	Level	Result	%REC	Limits	RPD	Limit	Notes

Batch 9032401 - EPA 5030 Water MS

Blank (9032401-BLK1)

Prepared: 03/24/09 Analyzed: 03/25/09

Benzene	ND	1.0	ug/l							
Toluene	ND	1.0	"							
Ethylbenzene	ND	1.0	"							
Xylenes (total)	ND	1.0	"							
Surrogate: 1,2-Dichloroethane-d4	13.1		"	13.3		98.5	77.3-121			
Surrogate: Toluene-d8	13.2		"	13.3		99.2	91.4-107			
Surrogate: 4-Bromofluorobenzene	13.1		"	13.3		98.5	85.3-109			

LCS (9032401-BS1)

Prepared: 03/24/09 Analyzed: 03/25/09

Benzene	27.1	1.0	ug/l	33.3		81.4	70-114			
Toluene	28.5	1.0	"	33.3		85.6	72.7-116			
Surrogate: 1,2-Dichloroethane-d4	14.2		"	13.3		107	77.3-121			
Surrogate: Toluene-d8	13.6		"	13.3		102	91.4-107			
Surrogate: 4-Bromofluorobenzene	13.4		"	13.3		101	85.3-109			

LCS Dup (9032401-BSD1)

Prepared: 03/24/09 Analyzed: 03/25/09

Benzene	26.2	1.0	ug/l	33.3		78.7	70-114	3.38	8.14	
Toluene	29.0	1.0	"	33.3		87.1	72.7-116	1.74	7.88	
Surrogate: 1,2-Dichloroethane-d4	14.1		"	13.3		106	77.3-121			
Surrogate: Toluene-d8	13.5		"	13.3		102	91.4-107			
Surrogate: 4-Bromofluorobenzene	13.2		"	13.3		99.2	85.3-109			

Matrix Spike (9032401-MS1)

Source: R903093-02

Prepared: 03/24/09 Analyzed: 03/25/09

Benzene	26.9	1.0	ug/l	33.3	0.26	80.0	66.8-117			
Toluene	29.2	1.0	"	33.3	ND	87.7	71.5-117			
Surrogate: 1,2-Dichloroethane-d4	15.0		"	13.3		113	77.3-121			
Surrogate: Toluene-d8	13.4		"	13.3		101	91.4-107			
Surrogate: 4-Bromofluorobenzene	13.2		"	13.3		99.2	85.3-109			

Summit Scientific

The results in this report apply to the samples analyzed in accordance with the chain of custody document. This analytical report must be reproduced in its entirety.



LT Environmental, Inc.
4600 West 60th Avenue
Arvada CO, 80003

Project: PDC - Anderson 12-13

Project Number: PDC08158
Project Manager: John Peterson

Reported:
03/25/09 19:44

Volatile Organic Compounds by EPA Method 8260B - Quality Control
Summit Scientific

Analyte	Reporting			Spike	Source		%REC		RPD	
	Result	Limit	Units	Level	Result	%REC	Limits	RPD	Limit	Notes

Batch 9032401 - EPA 5030 Water MS

Matrix Spike Dup (9032401-MSD1)		Source: R903093-02			Prepared: 03/24/09		Analyzed: 03/25/09			
Benzene	24.3	1.0	ug/l	33.3	0.26	72.2	66.8-117	10.2	17.8	
Toluene	25.6	1.0	"	33.3	ND	76.9	71.5-117	13.1	14.4	
Surrogate: 1,2-Dichloroethane-d4	16.0		"	13.3		120	77.3-121			
Surrogate: Toluene-d8	13.2		"	13.3		99.2	91.4-107			
Surrogate: 4-Bromofluorobenzene	13.7		"	13.3		103	85.3-109			

Summit Scientific

The results in this report apply to the samples analyzed in accordance with the chain of custody document. This analytical report must be reproduced in its entirety.



LT Environmental, Inc.
4600 West 60th Avenue
Arvada CO, 80003

Project: PDC - Anderson 12-13

Project Number: PDC08158
Project Manager: John Peterson

Reported:
03/25/09 19:44

Notes and Definitions

DET Analyte DETECTED
ND Analyte NOT DETECTED at or above the reporting limit
NR Not Reported
dry Sample results reported on a dry weight basis
RPD Relative Percent Difference

Summit Scientific

A handwritten signature in black ink, appearing to be 'JM' followed by a long horizontal stroke.

The results in this report apply to the samples analyzed in accordance with the chain of custody document. This analytical report must be reproduced in its entirety.

Summit Scientific

741 Corporate Circle – Suite I ♦ Golden, Colorado 80401

303.277.9310 - laboratory ♦ 303.277.9531 - fax

June 22, 2009

John Peterson
LT Environmental, Inc.
4600 West 60th Avenue
Arvada, CO 80003
RE: PDC - Anderson 12-13

Enclosed are the results of analyses for samples received by Summit Scientific on 06/18/09 16:45. If you have any questions concerning this report, please feel free to contact me.

Sincerely,

A handwritten signature in black ink, appearing to be 'LS' followed by a long, sweeping horizontal line.

Logan Shrewsbury For Ben Shrewsbury
Vice President / Laboratory Director



LT Environmental, Inc.
4600 West 60th Avenue
Arvada CO, 80003

Project: PDC - Anderson 12-13

Project Number: PDC 08158
Project Manager: John Peterson

Reported:
06/22/09 15:46

ANALYTICAL REPORT FOR SAMPLES

Sample ID	Laboratory ID	Matrix	Date Sampled	Date Received
MW01	R906118-01	Water	06/17/09 15:05	06/18/09 16:45
MW02	R906118-02	Water	06/17/09 15:10	06/18/09 16:45
MW03	R906118-03	Water	06/17/09 15:15	06/18/09 16:45
MW04	R906118-04	Water	06/17/09 15:20	06/18/09 16:45
MW05	R906118-05	Water	06/17/09 15:25	06/18/09 16:45
MW06	R906118-06	Water	06/17/09 15:30	06/18/09 16:45

Summit Scientific

The results in this report apply to the samples analyzed in accordance with the chain of custody document. This analytical report must be reproduced in its entirety.

LT Environmental, Inc.
4600 West 60th Avenue
Arvada CO, 80003

Project: PDC - Anderson 12-13

Project Number: PDC 08158
Project Manager: John Peterson

Reported:
06/22/09 15:46

Summit Scientific
F906118

S₂
741 Corporate Circle Suite I ♦ Golden, Colorado 80401
303-277-9310 ♦ 303-277-9531 Fax

Page 1 of 1

Client: LT Environmental, Inc.

Address: 4600 West 60th Avenue

City/State/Zip: Arvada, CO 80003

Phone: (303) 433-9788

Sampler Name: BLTT For

Project Manager:

E-Mail:

Project Name:

Project Number:

John Peterson

ipeterson@lter

WILSON

DC 08/58

[illegible]

www.s2scientific.com

Summit Scientific

The results in this report apply to the samples analyzed in accordance with the chain of custody document. This analytical report must be reproduced in its entirety.



LT Environmental, Inc.
4600 West 60th Avenue
Arvada CO, 80003

Project: PDC - Anderson 12-13

Project Number: PDC 08158
Project Manager: John Peterson

Reported:
06/22/09 15:46

MW01
R906118-01 (Water)

Summit Scientific

Volatile Organic Compounds by EPA Method 8260B

Date Sampled: **06/17/09 15:05**

Analyte	Result	Reporting Limit	Units	Dilution	Batch	Prepared	Analyzed	Method	Notes
Benzene	1.1	1.0	ug/l	1	9062101	06/21/09	06/22/09	EPA 8260B	
Toluene	ND	1.0	"	"	"	"	"	"	
Ethylbenzene	ND	1.0	"	"	"	"	"	"	
Xylenes (total)	ND	1.0	"	"	"	"	"	"	

Date Sampled: **06/17/09 15:05**

Analyte	Result	Reporting Limit	Units	Dilution	Batch	Prepared	Analyzed	Method	Notes
<i>Surrogate: 1,2-Dichloroethane-d4</i>		82.0 %	77.3-121		"	"	"	"	
<i>Surrogate: Toluene-d8</i>		105 %	91.4-107		"	"	"	"	
<i>Surrogate: 4-Bromofluorobenzene</i>		105 %	85.3-109		"	"	"	"	

Summit Scientific

The results in this report apply to the samples analyzed in accordance with the chain of custody document. This analytical report must be reproduced in its entirety.



LT Environmental, Inc.
4600 West 60th Avenue
Arvada CO, 80003

Project: PDC - Anderson 12-13

Project Number: PDC 08158
Project Manager: John Peterson

Reported:
06/22/09 15:46

MW02
R906118-02 (Water)

Summit Scientific

Volatile Organic Compounds by EPA Method 8260B

Date Sampled: **06/17/09 15:10**

Analyte	Result	Reporting		Dilution	Batch	Prepared	Analyzed	Method	Notes
		Limit	Units						
Benzene	ND	1.0	ug/l	1	9062101	06/21/09	06/22/09	EPA 8260B	
Toluene	ND	1.0	"	"	"	"	"	"	
Ethylbenzene	ND	1.0	"	"	"	"	"	"	
Xylenes (total)	ND	1.0	"	"	"	"	"	"	

Date Sampled: **06/17/09 15:10**

Analyte	Result	Reporting		Dilution	Batch	Prepared	Analyzed	Method	Notes
		Limit	Units						
Surrogate: 1,2-Dichloroethane-d4		81.2 %	77.3-121		"	"	"	"	
Surrogate: Toluene-d8		105 %	91.4-107		"	"	"	"	
Surrogate: 4-Bromofluorobenzene		102 %	85.3-109		"	"	"	"	

Summit Scientific

The results in this report apply to the samples analyzed in accordance with the chain of custody document. This analytical report must be reproduced in its entirety.



LT Environmental, Inc.
4600 West 60th Avenue
Arvada CO, 80003

Project: PDC - Anderson 12-13

Project Number: PDC 08158
Project Manager: John Peterson

Reported:
06/22/09 15:46

MW03
R906118-03 (Water)

Summit Scientific

Volatile Organic Compounds by EPA Method 8260B

Date Sampled: **06/17/09 15:15**

Analyte	Result	Reporting		Dilution	Batch	Prepared	Analyzed	Method	Notes
		Limit	Units						
Benzene	ND	1.0	ug/l	1	9062101	06/21/09	06/22/09	EPA 8260B	
Toluene	ND	1.0	"	"	"	"	"	"	
Ethylbenzene	ND	1.0	"	"	"	"	"	"	
Xylenes (total)	ND	1.0	"	"	"	"	"	"	

Date Sampled: **06/17/09 15:15**

Analyte	Result	Reporting		Dilution	Batch	Prepared	Analyzed	Method	Notes
		Limit	Units						
Surrogate: 1,2-Dichloroethane-d4		81.2 %	77.3-121		"	"	"	"	
Surrogate: Toluene-d8		107 %	91.4-107		"	"	"	"	
Surrogate: 4-Bromofluorobenzene		104 %	85.3-109		"	"	"	"	

Summit Scientific

The results in this report apply to the samples analyzed in accordance with the chain of custody document. This analytical report must be reproduced in its entirety.



LT Environmental, Inc.
4600 West 60th Avenue
Arvada CO, 80003

Project: PDC - Anderson 12-13

Project Number: PDC 08158
Project Manager: John Peterson

Reported:
06/22/09 15:46

MW04
R906118-04 (Water)

Summit Scientific

Volatile Organic Compounds by EPA Method 8260B

Date Sampled: **06/17/09 15:20**

Analyte	Result	Reporting		Units	Dilution	Batch	Prepared	Analyzed	Method	Notes
		Limit								
Benzene	ND	1.0		ug/l	1	9062101	06/21/09	06/22/09	EPA 8260B	
Toluene	ND	1.0		"	"	"	"	"	"	
Ethylbenzene	ND	1.0		"	"	"	"	"	"	
Xylenes (total)	ND	1.0		"	"	"	"	"	"	

Date Sampled: **06/17/09 15:20**

Analyte	Result	Reporting		Units	Dilution	Batch	Prepared	Analyzed	Method	Notes
		Limit								
Surrogate: 1,2-Dichloroethane-d4		81.2 %		77.3-121		"	"	"	"	
Surrogate: Toluene-d8		106 %		91.4-107		"	"	"	"	
Surrogate: 4-Bromofluorobenzene		102 %		85.3-109		"	"	"	"	

Summit Scientific

The results in this report apply to the samples analyzed in accordance with the chain of custody document. This analytical report must be reproduced in its entirety.



LT Environmental, Inc.
4600 West 60th Avenue
Arvada CO, 80003

Project: PDC - Anderson 12-13

Project Number: PDC 08158
Project Manager: John Peterson

Reported:
06/22/09 15:46

MW05
R906118-05 (Water)

Summit Scientific

Volatile Organic Compounds by EPA Method 8260B

Date Sampled: **06/17/09 15:25**

Analyte	Result	Reporting		Dilution	Batch	Prepared	Analyzed	Method	Notes
		Limit	Units						
Benzene	ND	1.0	ug/l	1	9062101	06/21/09	06/22/09	EPA 8260B	
Toluene	ND	1.0	"	"	"	"	"	"	
Ethylbenzene	ND	1.0	"	"	"	"	"	"	
Xylenes (total)	ND	1.0	"	"	"	"	"	"	

Date Sampled: **06/17/09 15:25**

Analyte	Result	Reporting		Dilution	Batch	Prepared	Analyzed	Method	Notes
		Limit	Units						
Surrogate: 1,2-Dichloroethane-d4		82.0 %	77.3-121		"	"	"	"	
Surrogate: Toluene-d8		103 %	91.4-107		"	"	"	"	
Surrogate: 4-Bromofluorobenzene		104 %	85.3-109		"	"	"	"	

Summit Scientific

The results in this report apply to the samples analyzed in accordance with the chain of custody document. This analytical report must be reproduced in its entirety.



LT Environmental, Inc.
4600 West 60th Avenue
Arvada CO, 80003

Project: PDC - Anderson 12-13

Project Number: PDC 08158
Project Manager: John Peterson

Reported:
06/22/09 15:46

MW06
R906118-06 (Water)

Summit Scientific

Volatile Organic Compounds by EPA Method 8260B

Date Sampled: **06/17/09 15:30**

Analyte	Result	Reporting		Units	Dilution	Batch	Prepared	Analyzed	Method	Notes
		Limit								
Benzene	ND	1.0		ug/l	1	9062101	06/21/09	06/22/09	EPA 8260B	
Toluene	ND	1.0		"	"	"	"	"	"	
Ethylbenzene	ND	1.0		"	"	"	"	"	"	
Xylenes (total)	ND	1.0		"	"	"	"	"	"	

Date Sampled: **06/17/09 15:30**

Analyte	Result	Reporting		Units	Dilution	Batch	Prepared	Analyzed	Method	Notes
		Limit								
Surrogate: 1,2-Dichloroethane-d4		88.0 %		77.3-121		"	"	"	"	
Surrogate: Toluene-d8		106 %		91.4-107		"	"	"	"	
Surrogate: 4-Bromofluorobenzene		103 %		85.3-109		"	"	"	"	

Summit Scientific

The results in this report apply to the samples analyzed in accordance with the chain of custody document. This analytical report must be reproduced in its entirety.



LT Environmental, Inc.
4600 West 60th Avenue
Arvada CO, 80003

Project: PDC - Anderson 12-13

Project Number: PDC 08158
Project Manager: John Peterson

Reported:
06/22/09 15:46

Volatile Organic Compounds by EPA Method 8260B - Quality Control

Summit Scientific

Analyte	Reporting			Spike	Source		%REC		RPD	
	Result	Limit	Units	Level	Result	%REC	Limits	RPD	Limit	Notes

Batch 9062101 - EPA 5030 Water MS

Blank (9062101-BLK1)

Prepared & Analyzed: 06/21/09

Benzene	ND	1.0	ug/l							
Toluene	ND	1.0	"							
Ethylbenzene	ND	1.0	"							
Xylenes (total)	ND	1.0	"							
Surrogate: 1,2-Dichloroethane-d4	10.9		"	13.3		82.0	77.3-121			
Surrogate: Toluene-d8	13.5		"	13.3		102	91.4-107			
Surrogate: 4-Bromofluorobenzene	13.6		"	13.3		102	85.3-109			

LCS (9062101-BS1)

Prepared & Analyzed: 06/21/09

Benzene	32.4	1.0	ug/l	33.3		97.3	70-114			
Toluene	28.9	1.0	"	33.3		86.8	72.7-116			
Surrogate: 1,2-Dichloroethane-d4	11.2		"	13.3		84.2	77.3-121			
Surrogate: Toluene-d8	13.9		"	13.3		105	91.4-107			
Surrogate: 4-Bromofluorobenzene	13.4		"	13.3		101	85.3-109			

LCS Dup (9062101-BSD1)

Prepared & Analyzed: 06/21/09

Benzene	31.8	1.0	ug/l	33.3		95.5	70-114	1.87	8.14	
Toluene	28.5	1.0	"	33.3		85.6	72.7-116	1.39	7.88	
Surrogate: 1,2-Dichloroethane-d4	11.1		"	13.3		83.5	77.3-121			
Surrogate: Toluene-d8	14.1		"	13.3		106	91.4-107			
Surrogate: 4-Bromofluorobenzene	13.7		"	13.3		103	85.3-109			

Matrix Spike (9062101-MS1)

Source: R906116-04

Prepared & Analyzed: 06/21/09

Benzene	31.6	1.0	ug/l	33.3	ND	94.9	66.8-117			
Toluene	28.2	1.0	"	33.3	ND	84.7	71.5-117			
Surrogate: 1,2-Dichloroethane-d4	11.3		"	13.3		85.0	77.3-121			
Surrogate: Toluene-d8	13.7		"	13.3		103	91.4-107			
Surrogate: 4-Bromofluorobenzene	13.4		"	13.3		101	85.3-109			

Summit Scientific

The results in this report apply to the samples analyzed in accordance with the chain of custody document. This analytical report must be reproduced in its entirety.



LT Environmental, Inc.
4600 West 60th Avenue
Arvada CO, 80003

Project: PDC - Anderson 12-13

Project Number: PDC 08158
Project Manager: John Peterson

Reported:
06/22/09 15:46

Volatile Organic Compounds by EPA Method 8260B - Quality Control
Summit Scientific

Analyte	Reporting			Spike	Source		%REC		RPD	
	Result	Limit	Units	Level	Result	%REC	Limits	RPD	Limit	Notes

Batch 9062101 - EPA 5030 Water MS

Matrix Spike Dup (9062101-MSD1)		Source: R906116-04			Prepared & Analyzed: 06/21/09					
Benzene	29.4	1.0	ug/l	33.3	ND	88.3	66.8-117	7.21	17.8	
Toluene	26.0	1.0	"	33.3	ND	78.1	71.5-117	8.12	14.4	
Surrogate: 1,2-Dichloroethane-d4	12.4		"	13.3		93.2	77.3-121			
Surrogate: Toluene-d8	13.7		"	13.3		103	91.4-107			
Surrogate: 4-Bromofluorobenzene	14.0		"	13.3		105	85.3-109			

Summit Scientific

The results in this report apply to the samples analyzed in accordance with the chain of custody document. This analytical report must be reproduced in its entirety.



LT Environmental, Inc.
4600 West 60th Avenue
Arvada CO, 80003

Project: PDC - Anderson 12-13

Project Number: PDC 08158
Project Manager: John Peterson

Reported:
06/22/09 15:46

Notes and Definitions

DET Analyte DETECTED
ND Analyte NOT DETECTED at or above the reporting limit
NR Not Reported
dry Sample results reported on a dry weight basis
RPD Relative Percent Difference

Summit Scientific

A handwritten signature in black ink, appearing to be 'JM' followed by a long horizontal stroke.

The results in this report apply to the samples analyzed in accordance with the chain of custody document. This analytical report must be reproduced in its entirety.